

STATE OF ILLINOIS
DEPARTMENT OF TRANSPORTATION
DIVISION OF HIGHWAYS

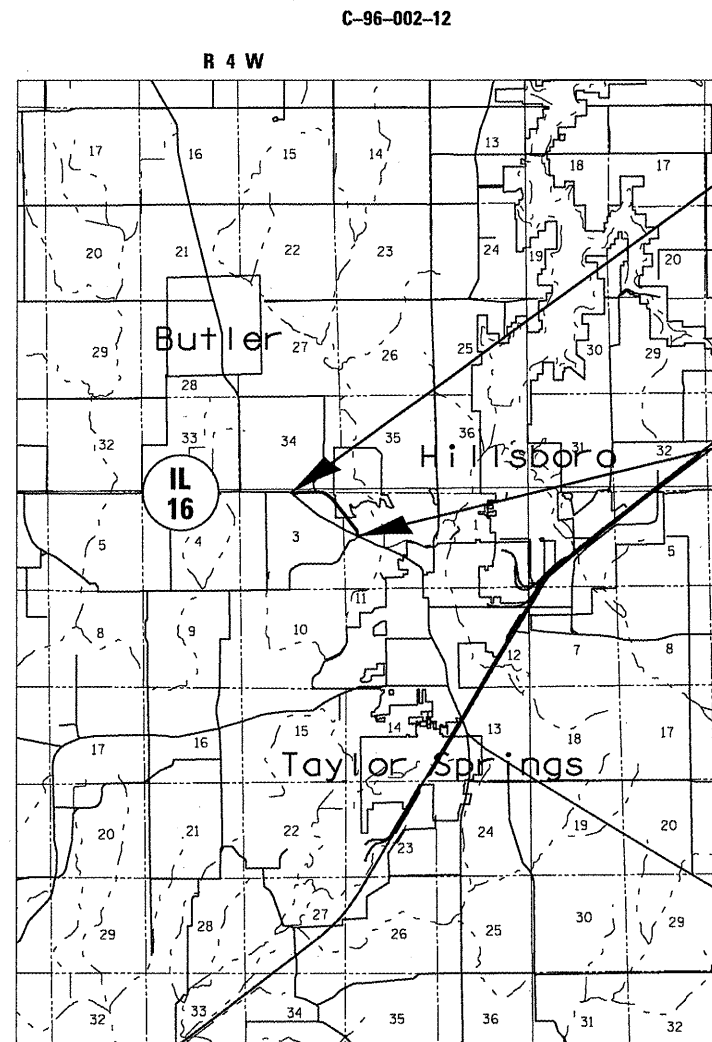
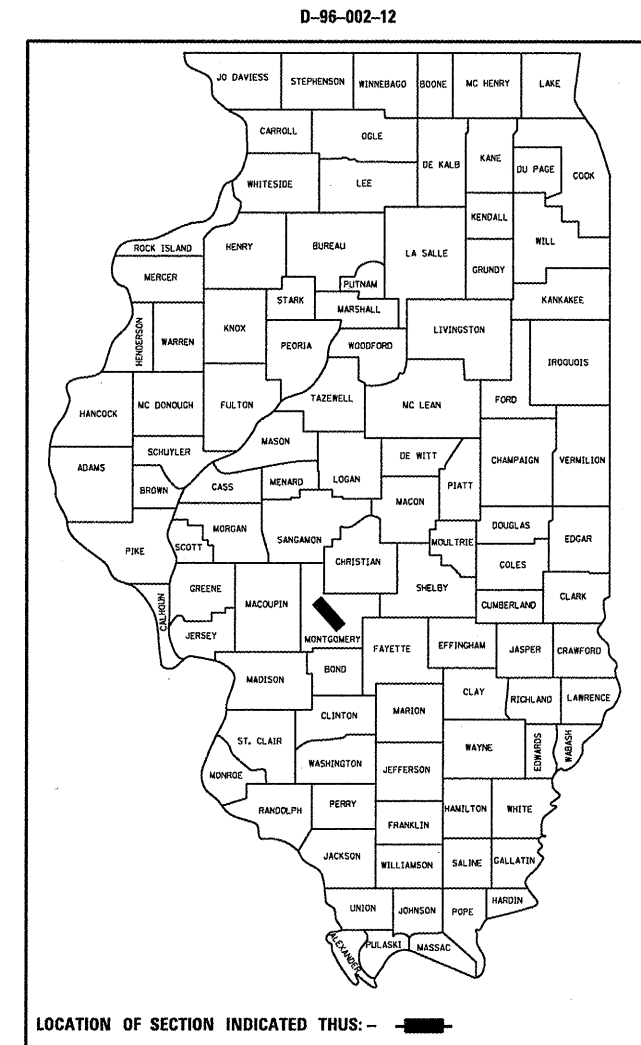
PROPOSED CONTRACT MAINTENANCE

FOR INDEX OF SHEETS, SEE SHEET NO. 2

SBI 16A (CRESS CIRCLE)
SECTION (21)I-6

MONTGOMERY COUNTY

S.B.I. RTE.	SECTION	COUNTY	TOTAL SHEETS	SHEET NO.
16A	(21)I-6	MONTGOMERY	5	1
FED. ROAD DIST. NO.	ILLINOIS	CONTRACT NO. 72E65		



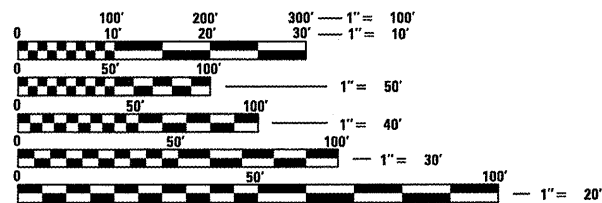
BEGIN PROJECT
STA. 0 + 25.00

STA. EQ.
 $3 + 24.00bk = 380 + 41.00ah$

STA. EQ.
 $424 + 62.05bk = 3 + 67.99bk$

END PROJECT
STA. 0 + 25.00

ADT = 100 (UNKNOWN)



FULL SIZE PLANS HAVE BEEN PREPARED USING STANDARD ENGINEERING SCALES. REDUCED SIZED PLANS WILL NOT CONFORM TO STANDARD SCALES. IN MAKING MEASUREMENTS ON REDUCED PLANS, THE ABOVE SCALES MAY BE USED.

J.U.L.I.E.
JOINT UTILITY LOCATION INFORMATION FOR EXCAVATION
1-800-892-0123
OR 811

PLAN AND CONTRACT TECHNICIAN
TIMOTHY SHARP (217)782-7743

CONTRACT NO. 72E65

GROSS LENGTH = 5,063.04 FT. = 0.959 MILE

STATE OF ILLINOIS
DEPARTMENT OF TRANSPORTATION
DIVISION OF HIGHWAYS

SUBMITTED Sept 7 20 11
2011 2/10/11
DEPUTY DIRECTOR OF HIGHWAYS, REGION ENGINEER

Oct 14 20 11
Scott E. Stitt P.E.
acting ENGINEER OF DESIGN AND ENVIRONMENT

Oct 14 20 11
Christine M. Reed
DIRECTOR OF HIGHWAYS, CHIEF ENGINEER

PRINTED BY THE AUTHORITY
OF THE STATE OF ILLINOIS

INDEX

- 1 COVER
- 2 INDEX/STANDARDS/SIGNATURES
- 3 QUANTITIES
- 4 LOCATION MAP
- 5 TYPICAL SECTIONS

STANDARDS

- 442001-04
- 701001-02
- 701006-03
- 701201-04
- 701306-03
- 701901-01
- 701301-04

MIXTURE REQUIREMENTS	
THE FOLLOWING MIXTURE REQUIREMENTS ARE APPLICABLE FOR THIS PROJECT	
MIXTURE USE(S):	LEVEL BIND. (M.M.)
AC/PG	PG 64-22
DESIGN AIR VOIDS:	4.0% @ N DESIGN = 50
MIXTURE COMP:	IL 9.5
FRICTION AGG:	N/A

STATE OF ILLINOIS DEPARTMENT OF TRANSPORTATION DIVISION OF HIGHWAYS DISTRICT 6	
EXAMINED	SEP 6 20 11
	<i>Chris Walker</i>
	ENGINEER OF OPERATIONS
EXAMINED	AUG 26 20 11
	<i>Tommy Furt</i>
	ENGINEER OF PROJECT IMPLEMENTATION
EXAMINED	August 26 20 11
	<i>ARMU</i>
	ENGINEER OF PROGRAM DEVELOPMENT

INDEX/STANDARDS/SIGNATURES
SBI 16A (CRESS CIRCLE)
SECTION (2)I-6
MONTGOMERY COUNTY

SUMMARY OF QUANTITIES

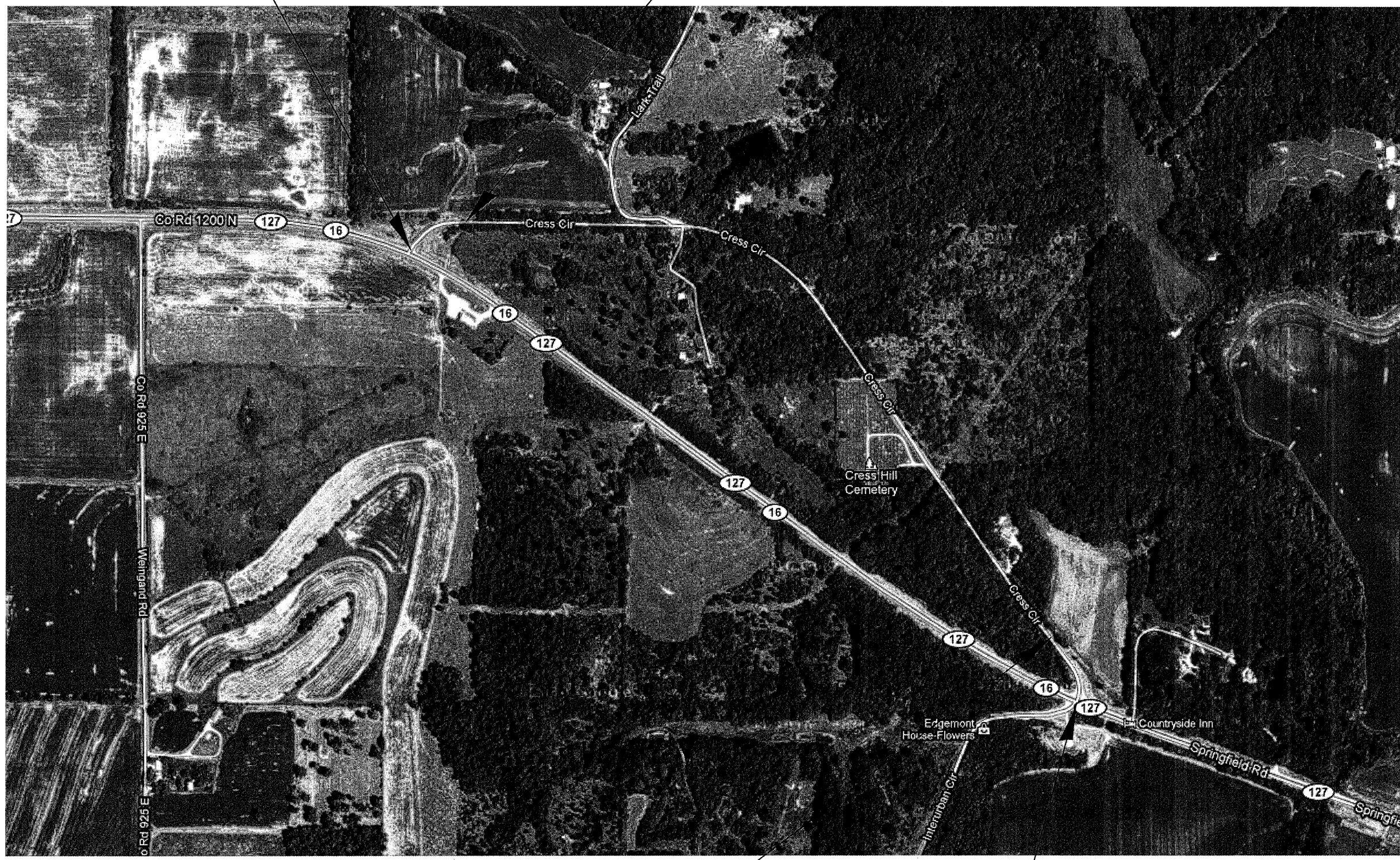
CODE NO.	ITEM	UNIT	100% STATE
			0005
			TOTAL QTY
40300400	BITUMINOUS MATERIALS (COVER AND SEAL COAT)	TON	54
40300500	COVER COAT AGGREGATE	TON	142
40300600	SEAL COAT AGGREGATE	TON	142
40600200	BITUMINOUS MATERIALS (PRIME COAT)	TON	5
40600300	AGGREGATE (PRIME COAT)	TON	29
40600625	LEVELING BINDER (MACHINE METHOD) N50	TON	598
67100100	MOBILIZATION	L SUM	1
70100450	TRAFFIC CONTROL AND PROTECTION, STANDARD 701201	L SUM	1
70100460	TRAFFIC CONTROL AND PROTECTION, STANDARD 701306	L SUM	1

QUANTITIES
SBI 16A (CRESS CIRCLE)
SECTION (21)I-6
MONTGOMERY COUNTY

BEGIN PROJECT
STA. 0+25.00

STA. EQ.
3+24.00bk=380+41.00ah

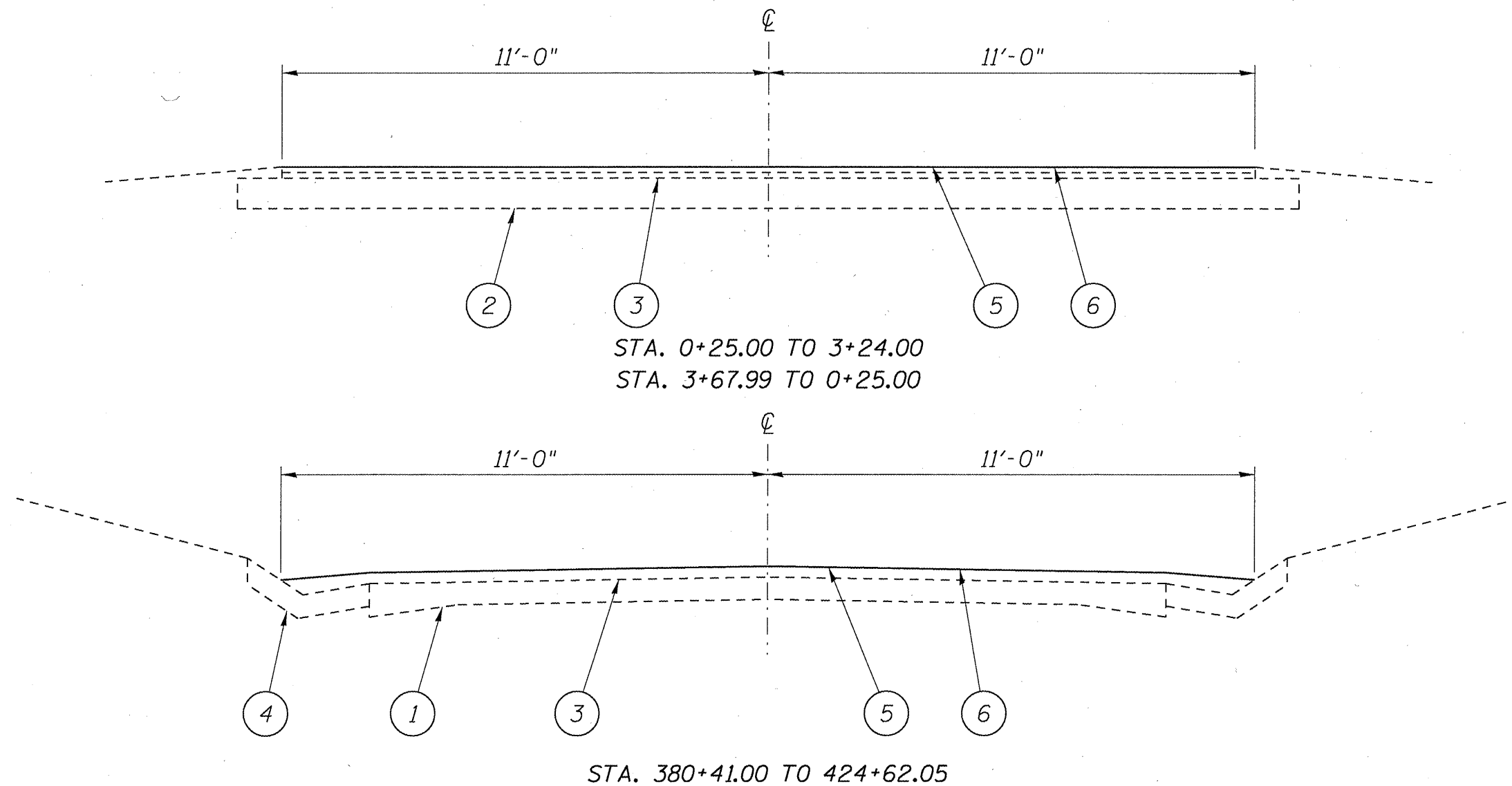
CONTRACT: 72E65
SHEET 4 OF 5



STA. EQ.
424+62.05bk
=3+67.99bk

END PROJECT
STA. 0+25.00

PLAN
SBI 16A (CRESS CIRCLE)
SECTION (2)I-6
MONTGOMERY COUNTY



LEGEND

- 1- EXIST. P.C.C. PAVEMENT
- 2- EXIST. AGGREGATE BASE COURSE, TYPE A (8")
- 3- EXIST. HOT-MIX ASPHALT SURFACE
- 4- EXIST. GUTTER
- 5- PROP. LEVELING BINDER (MACHINE METHOD) N50 $\frac{3}{4}$ "
- 6- PROP. BITUMINOUS SURFACE TREATMENT (CL.A-2)

TYPICALS
SBI 16A (CRESS CIRCLE)
SECTION (2)I-6
MONTGOMERY COUNTY