

STATE OF ILLINOIS
DEPARTMENT OF TRANSPORTATION
DIVISION OF HIGHWAYS

**PROPOSED
CONTRACT MAINTENANCE**

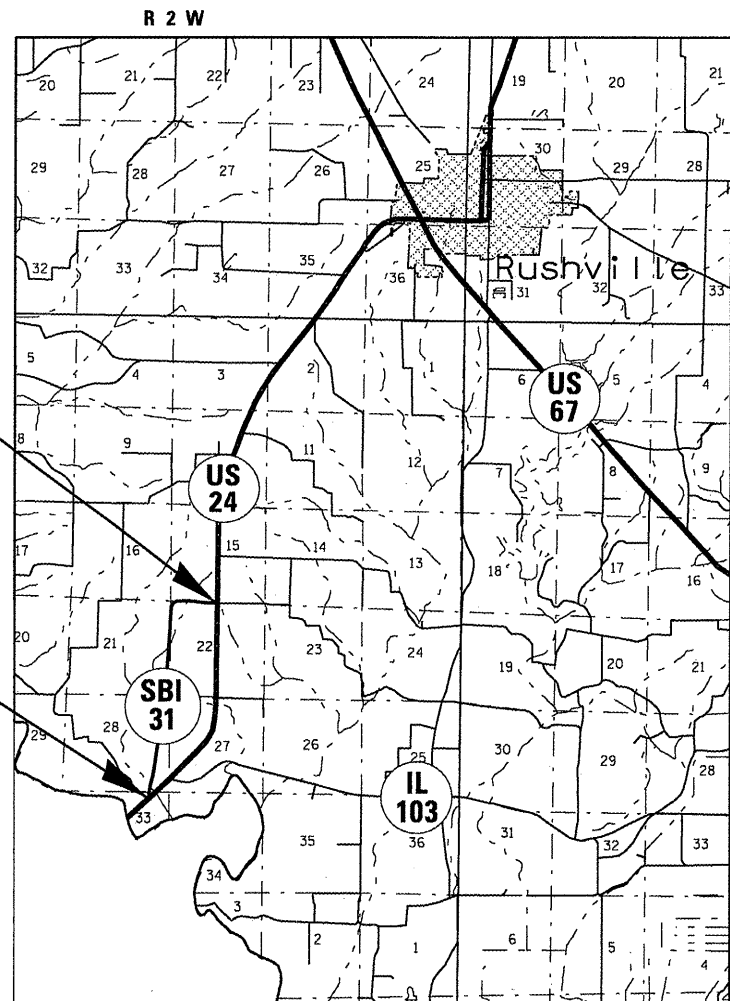
SBI 31 (OLD US 24)
SECTION (10,11)I-1

SCHUYLER COUNTY

C-96-003-12

S.B.I. RTE.	SECTION	COUNTY	TOTAL SHEETS	SHEET NO.
31	(10,11)I-1	SCHUYLER	6	1
FED. ROAD DIST. NO. -		ILLINOIS	CONTRACT NO. 72E66	

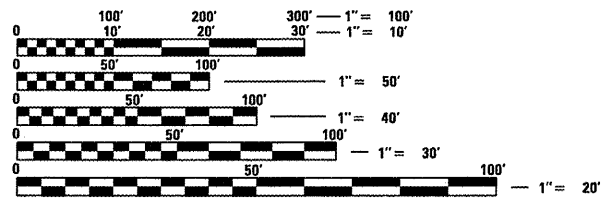
FOR INDEX OF SHEETS, SEE SHEET NO. 2



BEGIN PROJECT
STA. 291 + 73

END PROJECT
STA. 422 + 02

ADT = 25 (UNKNOWN)



FULL SIZE PLANS HAVE BEEN PREPARED USING STANDARD ENGINEERING SCALES. REDUCED SIZED PLANS WILL NOT CONFORM TO STANDARD SCALES. IN MAKING MEASUREMENTS ON REDUCED PLANS, THE ABOVE SCALES MAY BE USED.

J.U.L.I.E.
JOINT UTILITY LOCATION INFORMATION FOR EXCAVATION
1-800-892-0123
OR 811

PLAN AND CONTRACT TECHNICIAN
TIMOTHY SHARP (217)782-7743

CONTRACT NO. 72E66

GROSS LENGTH = 13,029 FT. = 2.468 MILE

STATE OF ILLINOIS
DEPARTMENT OF TRANSPORTATION
DIVISION OF HIGHWAYS

SUBMITTED Sept 7 20 11
Rep 2 Dinkel
DEPUTY DIRECTOR OF HIGHWAYS, REGION ENGINEER

Oct 14 20 11
Scott E. Stitt P.E. Ica
acting ENGINEER OF DESIGN AND ENVIRONMENT

Oct 14 20 11
Christine M. Reed Ica
DIRECTOR OF HIGHWAYS, CHIEF ENGINEER

PRINTED BY THE AUTHORITY
OF THE STATE OF ILLINOIS