

STATE OF ILLINOIS
DEPARTMENT OF TRANSPORTATION
DIVISION OF HIGHWAYS

**PROPOSED
CONTRACT MAINTENANCE**

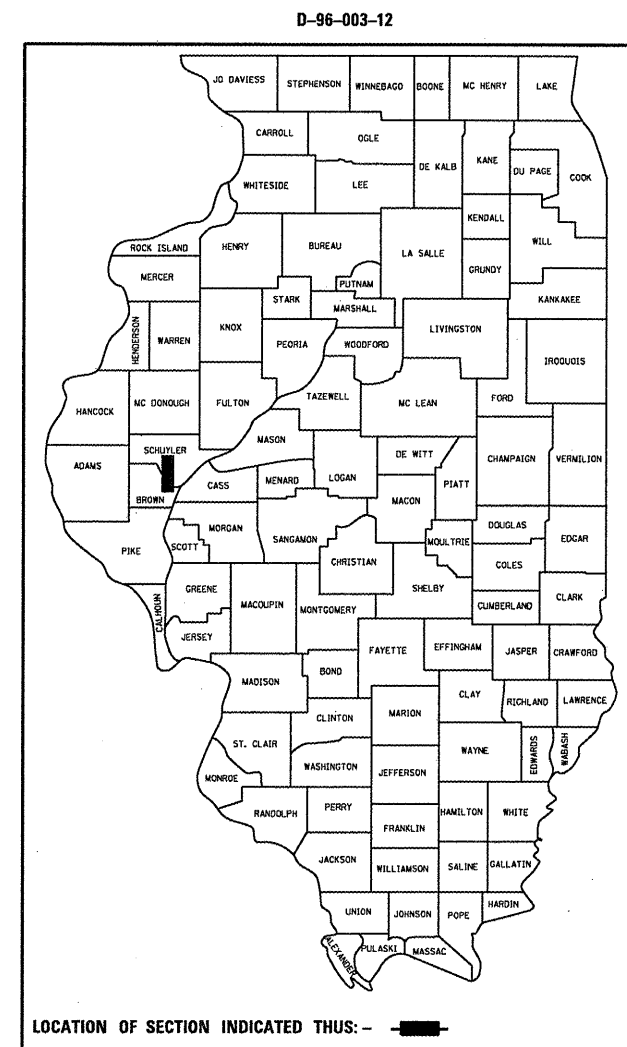
SBI 31 (OLD US 24)
SECTION (10,11)I-1

SCHUYLER COUNTY

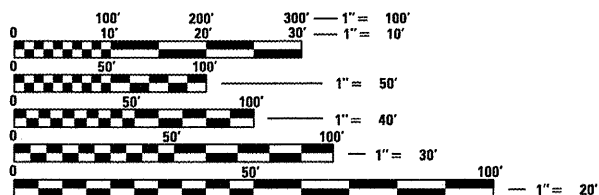
C-96-003-12

S.B.I. RTE.	SECTION	COUNTY	TOTAL SHEETS	SHEET NO.
31	(10,11)I-1	SCHUYLER	6	1
FED. ROAD DIST. NO. -		ILLINOIS	CONTRACT NO. 72E66	

FOR INDEX OF SHEETS, SEE SHEET NO. 2



ADT = 25 (UNKNOWN)



FULL SIZE PLANS HAVE BEEN PREPARED USING STANDARD ENGINEERING SCALES. REDUCED SIZED PLANS WILL NOT CONFORM TO STANDARD SCALES. IN MAKING MEASUREMENTS ON REDUCED PLANS, THE ABOVE SCALES MAY BE USED.

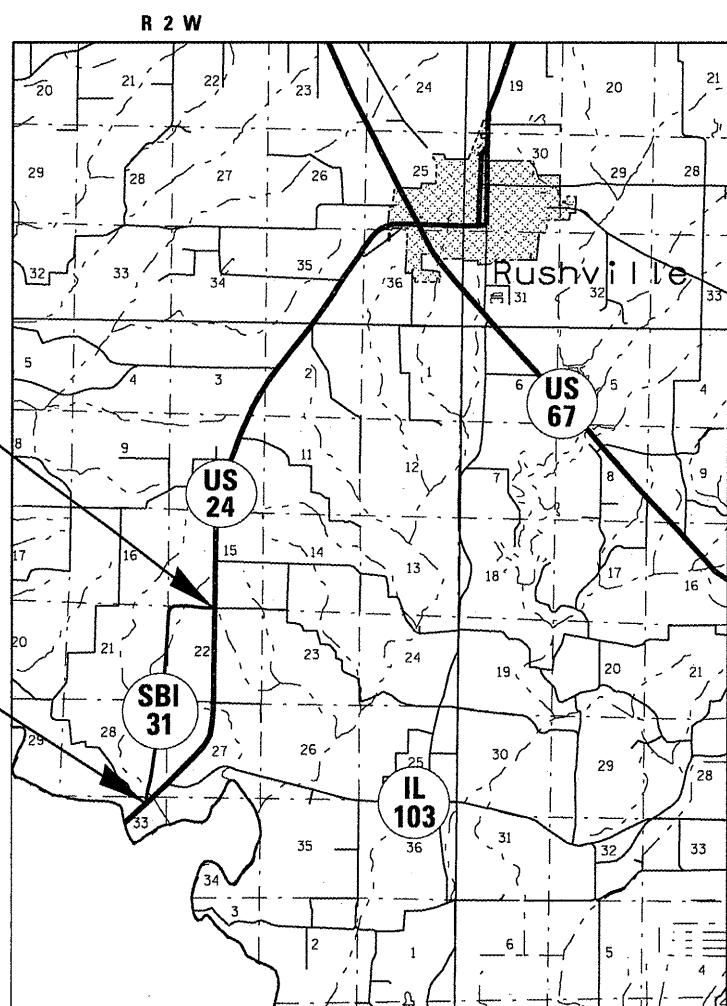
J.U.L.I.E.
JOINT UTILITY LOCATION INFORMATION FOR EXCAVATION
1-800-892-0123
OR 811

PLAN AND CONTRACT TECHNICIAN
TIMOTHY SHARP (217)782-7743

CONTRACT NO. 72E66

BEGIN PROJECT
STA. 291 + 73

END PROJECT
STA. 422 + 02



GROSS LENGTH = 13,029 FT. = 2.468 MILE

STATE OF ILLINOIS
DEPARTMENT OF TRANSPORTATION
DIVISION OF HIGHWAYS

SUBMITTED Sept 7 20 11
Rep 2 Dinkley
DEPUTY DIRECTOR OF HIGHWAYS, REGION ENGINEER

Oct 14 20 11
Scott E. Stett P.E. Ica
acting ENGINEER OF DESIGN AND ENVIRONMENT

Oct 14 20 11
Christine M. Reed Ica
DIRECTOR OF HIGHWAYS, CHIEF ENGINEER

PRINTED BY THE AUTHORITY
OF THE STATE OF ILLINOIS

INDEX

- 1 COVER
- 2 INDEX/STANDARDS/SIGNATURES
- 3 QUANTITIES
- 4 LOCATION MAP
- 5-6 TYPICAL SECTIONS

STANDARDS

- 442001-04
- 442201-03
- 701001-02
- 701006-03
- 701201-04
- 701306-03
- 701901-01
- 701301-04

STATE OF ILLINOIS DEPARTMENT OF TRANSPORTATION DIVISION OF HIGHWAYS DISTRICT 6		
EXAMINED	SEP 6	20 11
	<i>Chris Walsh</i>	
	ENGINEER OF OPERATIONS	
EXAMINED	AUG 26	20 11
	<i>Jimmy Furt</i>	
	ENGINEER OF PROJECT IMPLEMENTATION	
EXAMINED	August 26	20 11
	ARMLI	
	ENGINEER OF PROGRAM DEVELOPMENT	

MIXTURE REQUIREMENTS

THE FOLLOWING MIXTURE REQUIREMENTS
ARE APPLICABLE FOR THIS PROJECT

MIXTURE USE(S):	LEVEL BIND. (M.M.)	PAVEMENT PATCHING
AC/PG	PG 64-22	PG 64-22
DESIGN AIR VOIDS:	4.0% @ N DESIGN = 50	4.0% @ N DESIGN = 50
MIXTURE COMP:	IL 9.5	IL 19.0
FRICTION AGG:	N/A	N/A

INDEX/STANDARDS/SIGNATURES
SBI 31 (OLD US 24)
SECTION (10.11)I-1
SCHUYLER COUNTY

S U M M A R Y O F Q U A N T I T I E S

CODE NO.	ITEM	UNIT	100% STATE
			0005
			TOTAL QTY
40300400	BITUMINOUS MATERIALS (COVER AND SEAL COAT)	TON	114
40300500	COVER COAT AGGREGATE	TON	300
40300600	SEAL COAT AGGREGATE	TON	300
40600200	BITUMINOUS MATERIALS (PRIME COAT)	TON	6
40600300	AGGREGATE (PRIME COAT)	TON	84
40600625	LEVELING BINDER (MACHINE METHOD) N50	TON	669
44200104	PAVEMENT PATCHING, TYPE I, 9 INCH	SQ YD	95
44200108	PAVEMENT PATCHING, TYPE II, 9 INCH	SQ YD	110
44200112	PAVEMENT PATCHING, TYPE III, 9 INCH	SQ YD	180
44200114	PAVEMENT PATCHING, TYPE IV, 9 INCH	SQ YD	330
67100100	MOBILIZATION	L SUM	1
70100450	TRAFFIC CONTROL AND PROTECTION, STANDARD 701201	L SUM	1
70100460	TRAFFIC CONTROL AND PROTECTION, STANDARD 701306	L SUM	1

QUANTITIES
SBI 31 (OLD US 24)
SECTION (10,11)I-1
SCHUYLER COUNTY

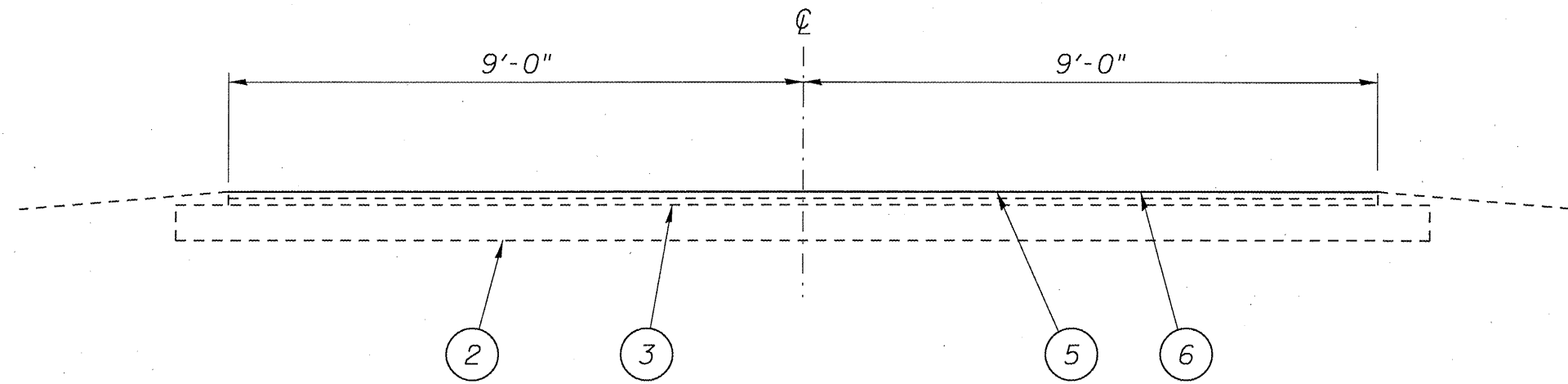


BEGIN PROJECT
STA. 291+73

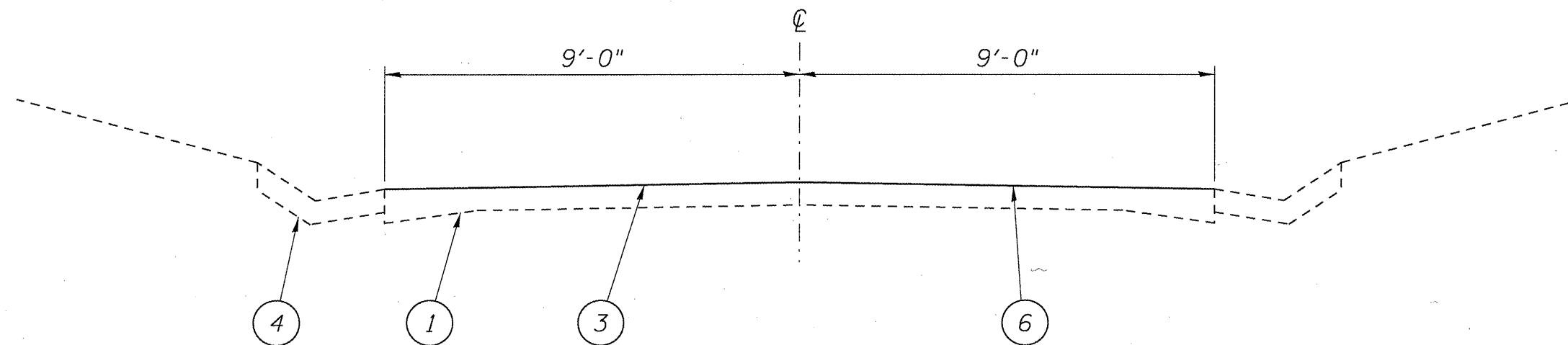


END PROJECT
STA. 422+02

PLAN
SBI 31 (OLD US 24)
SECTION (10,11)I-1
SCHUYLER COUNTY



STA. 291+73 TO 297+13
STA. 418+52 TO 422+02

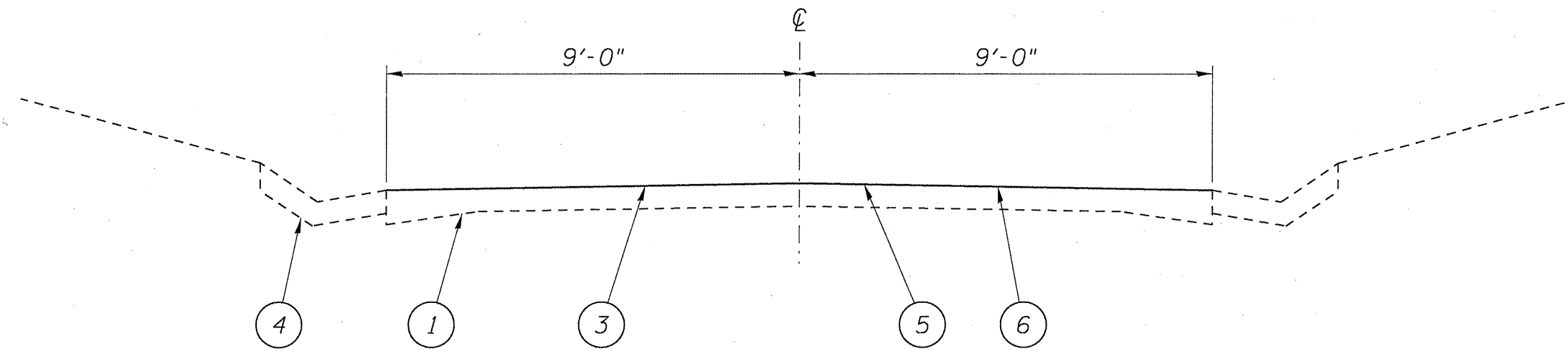


STA. 297+13 TO 328+39
STA. 359+61 TO 389+35

L E G E N D

- 1- EXIST. P.C.C. PAVEMENT
- 2- EXIST. AGGREGATE BASE COURSE, TYPE A (8")
- 3- EXIST. HOT-MIX ASPHALT SURFACE
- 4- EXIST. GUTTER
- 5- PROP. LEVELING BINDER (MACHINE METHOD) N50 $\frac{3}{4}$ "
- 6- PROP. BITUMINOUS SURFACE TREATMENT (CL.A-2)

TYPICALS
SBI 31 (OLD US 24)
SECTION (10,11)I-1
SCHUYLER COUNTY



STA. 328+39 TO 359+61
STA. 389+35 TO 418+52

L E G E N D

- 1- EXIST. P.C.C. PAVEMENT
- 2- EXIST. AGGREGATE BASE COURSE, TYPE A (8")
- 3- EXIST. HOT-MIX ASPHALT SURFACE
- 4- EXIST. GUTTER
- 5- PROP. LEVELING BINDER (MACHINE METHOD) N50 $\frac{3}{4}$ "
- 6- PROP. BITUMINOUS SURFACE TREATMENT (CL.A-2)

TYPICALS
SBI 31 (OLD US 24)
SECTION (10,11)I-1
SCHUYLER COUNTY