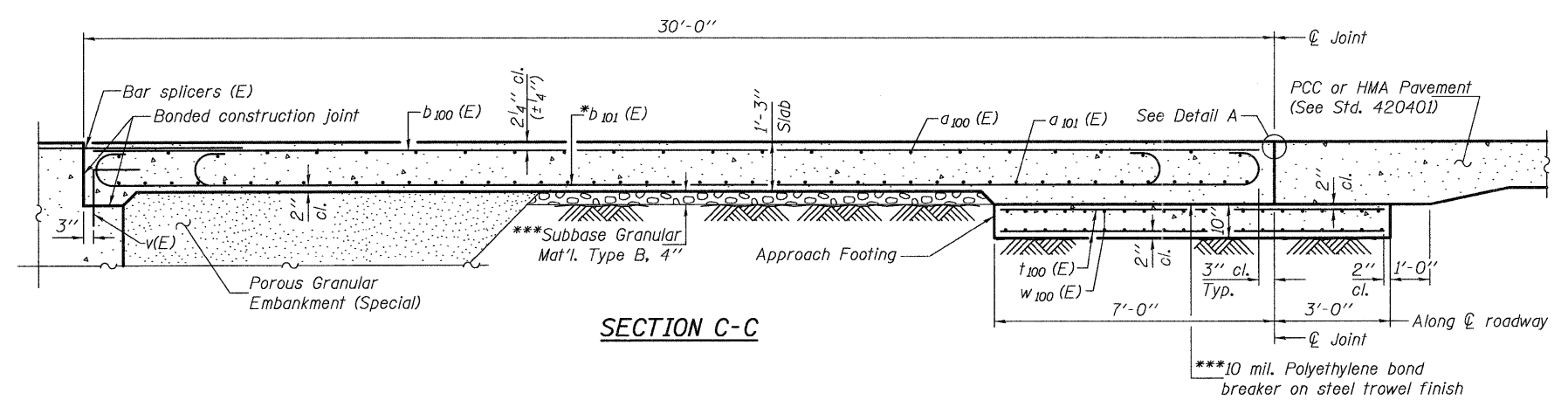
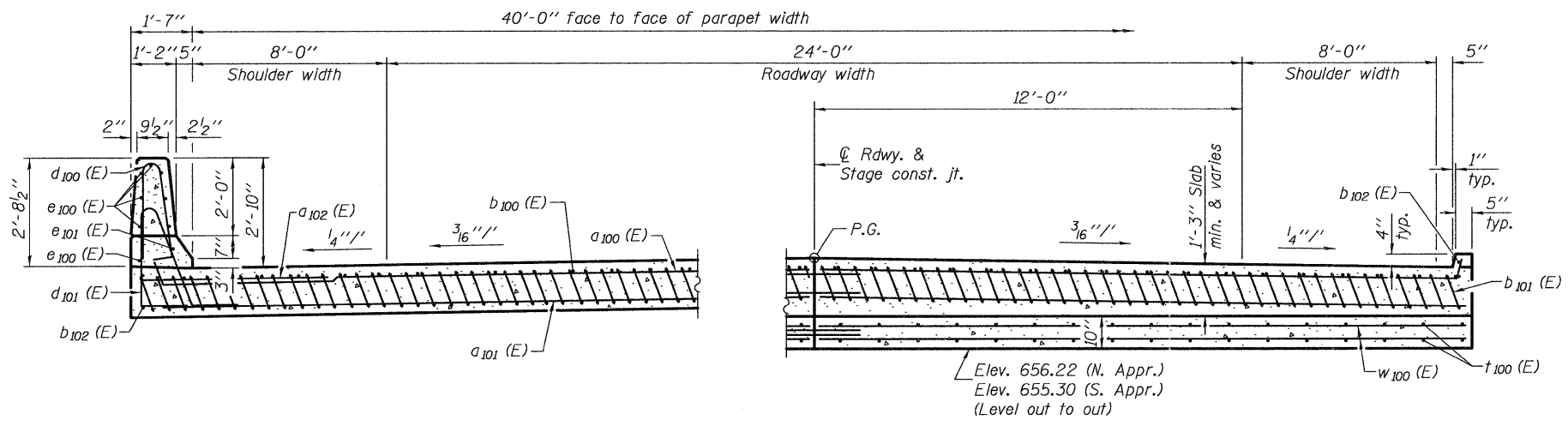


Notes:  
 See sheet 11 of 21 for Detail A and View B-B.  
 Approach slab and parapet concrete shall be paid for as Concrete Superstructure.  
 Approach footing concrete shall be paid for as Concrete Structures.  
 Reinforcement shall be paid for as Reinforcement Bars, Epoxy Coated.  
 For v(E) bar details, see sheet 9 of 21.  
 The approach footing maximum applied service bearing pressure ( $Q_{max}$ ) = 2.0 ksf.  
 For bar splicer details, see sheet 17 of 21.  
 Cost of excavation for approach footing included with Concrete Structures.  
 For Porous Granular Embankment (Special) and drainage treatment details, see sheet 1 of 21.  
 For additional parapet details, see sheet 9 of 21.



SECTION C-C

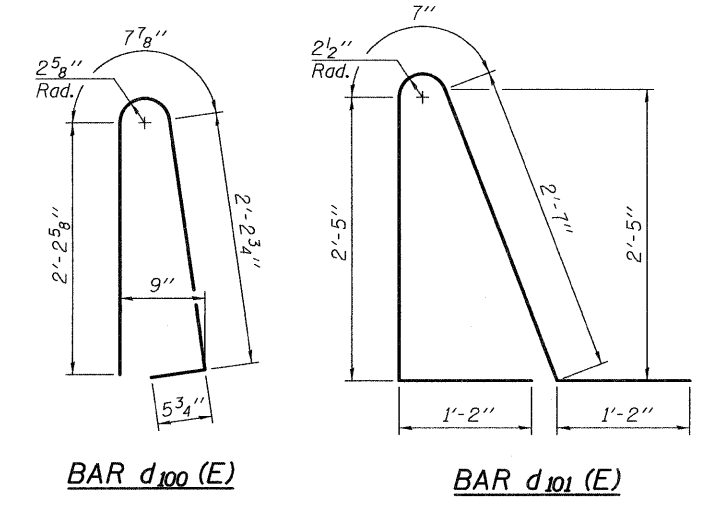


NEAR ABUTMENT

SECTION D-D

(See Plan for dimensions not shown)

AT APPROACH FOOTING

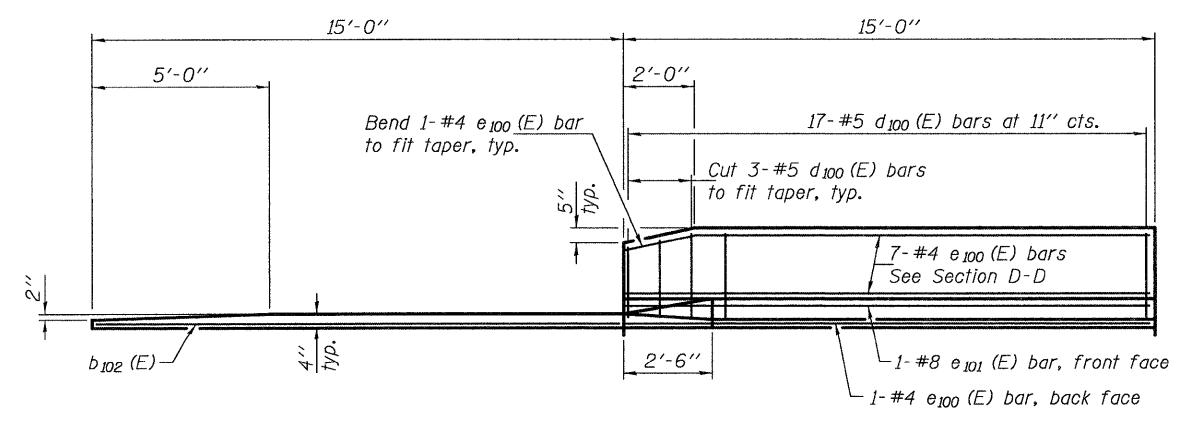


BAR d100(E)

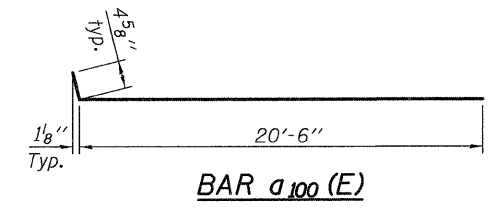
BAR d101(E)

TWO APPROACHES  
 BILL OF MATERIAL

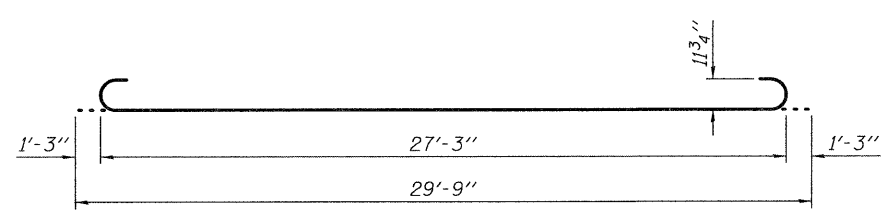
Bar	No.	Size	Length	Shape
a100(E)	100	#4	20'-11"	U
a101(E)	184	#5	20'-7"	U
a102(E)	48	#6	6'-6"	U
b100(E)	84	#4	29'-8"	—
b101(E)	196	#9	29'-9"	U
b102(E)	8	#4	14'-8"	—
d100(E)	68	#5	5'-7"	U
d101(E)	68	#5	7'-11"	U
e100(E)	32	#4	14'-8"	—
e101(E)	4	#8	14'-8"	—
t100(E)	168	#4	9'-8"	—
w100(E)	160	#5	20'-7"	—
Concrete Superstructure			Cu. Yd.	132.0
Concrete Structures			Cu. Yd.	25.6
Reinforcement Bars, Epoxy Coated			Pound	33330



VIEW E-E



BAR a100(E)



BAR b101(E)