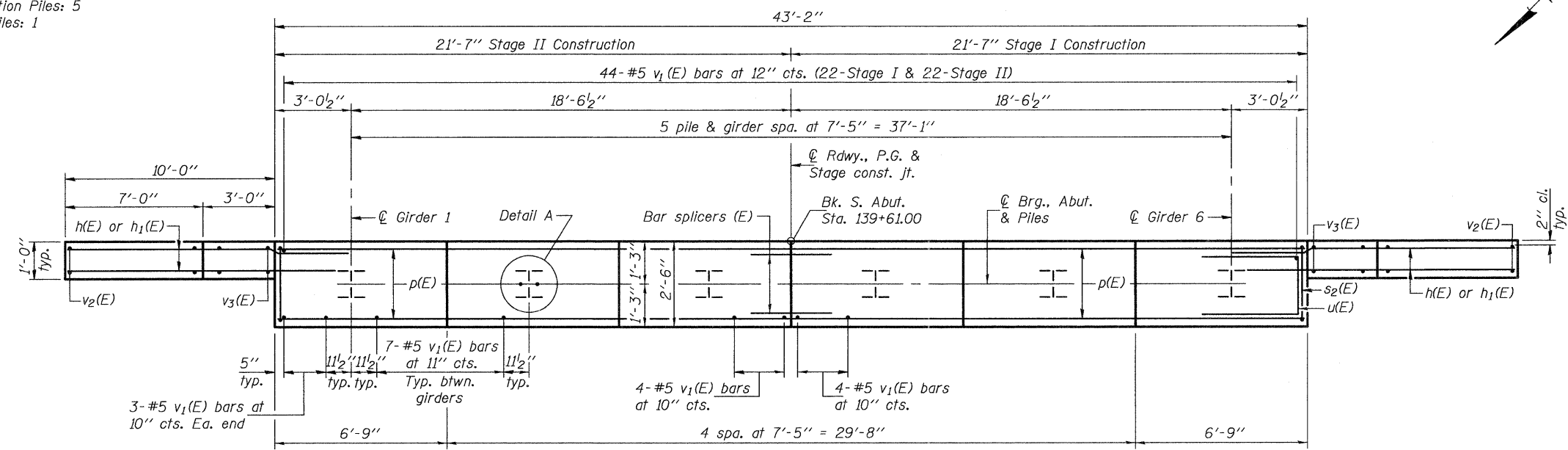


SEC. THRU ABUT.

PILE DATA

Type: Steel HP12x63
 Nominal Required Bearing: 470 Kips
 Factored Resistance Available: 235 Kips
 Est. Length: 87'
 No. Production Piles: 5
 No. Test Piles: 1

ELEVATION
 (Looking South)

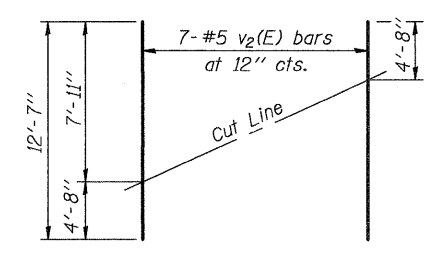


PLAN

BILL OF MATERIAL

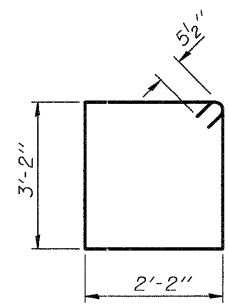
Bar	No.	Size	Length	Shape
h(E)	24	#6	12'-6"	—
h1(E)	4	#5	12'-4"	—
p(E)	18	#5	21'-3"	—
s2(E)	38	#5	11'-7"	□
u(E)	8	#6	7'-3"	⊔
v1(E)	86	#5	4'-4"	—
v2(E)	14	#5	12'-7"	—
v3(E)	12	#5	7'-11"	—
Structure Excavation		Cu. Yd.	46.0	
Concrete Structures		Cu. Yd.	19.8	
Reinforcement Bars, Epoxy Coated		Pound	2120	
Furnishing Steel Piles HP12x63		Foot	435	
Driving Piles		Foot	435	
Test Pile Steel HP12x63		Each	1	
Concrete Encasement		Cu. Yd.	2.1	
Anchor Bolts 1" φ		Each	12	

Notes: Pour steps monolithically with cap.
 For details of piles and concrete encasement, see sheet 18 of 21.
 Bend h(E) bars in field to miss piles and girders.

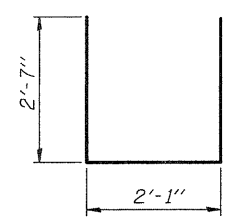


FIELD CUTTING DIAGRAM

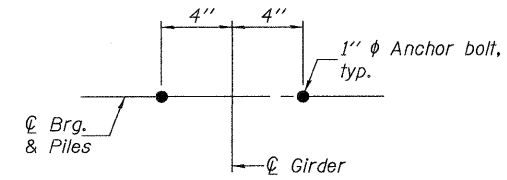
Order v2(E) full length. Cut as shown and use remainder of bars in opposite face.



BAR s2(E)



BAR u(E)



DETAIL A