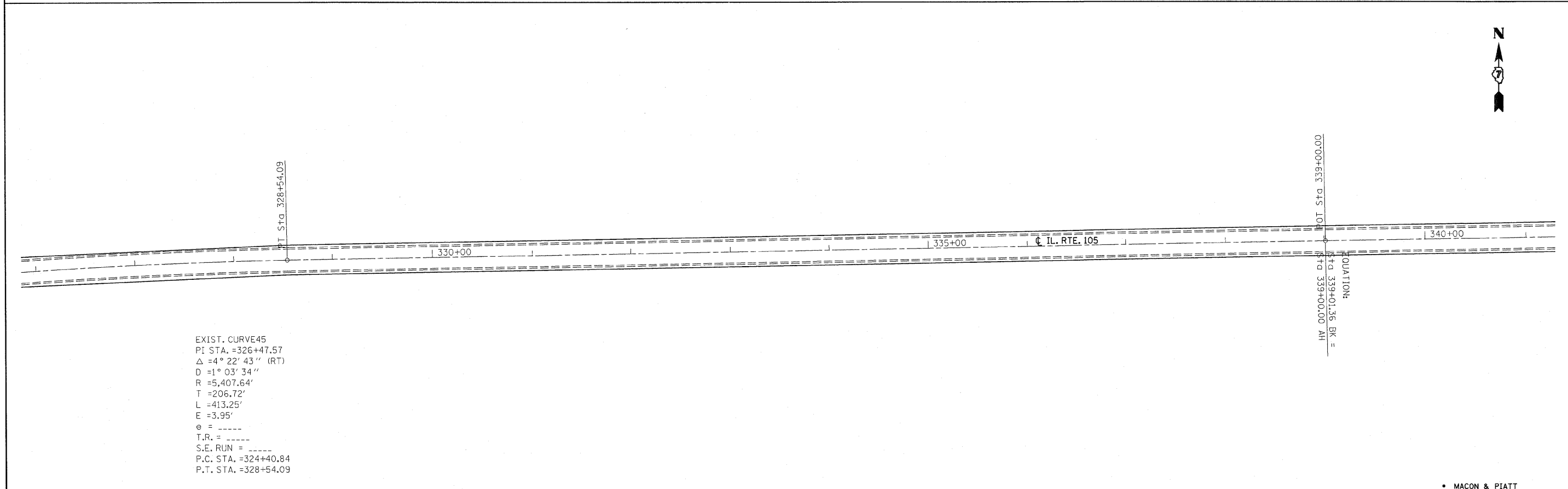


EXIST. CURVE44
 PI STA. =320+74.88
 Δ =3° 17' 12" (LT)
 D =0° 45' 03"
 R =7,631.23'
 T =218.94'
 L =437.76'
 E =3.14'
 e = -----
 T.R. = -----
 S.E. RUN = -----
 P.C. STA. =318+55.94
 P.T. STA. =322+93.70



EXIST. CURVE45
 PI STA. =326+47.57
 Δ =4° 22' 43" (RT)
 D =1° 03' 34"
 R =5,407.64'
 T =206.72'
 L =413.25'
 E =3.95'
 e = -----
 T.R. = -----
 S.E. RUN = -----
 P.C. STA. =324+40.84
 P.T. STA. =328+54.09

FILE NAME =	USER NAME = swartzw	DESIGNED -	REVISED -	STATE OF ILLINOIS DEPARTMENT OF TRANSPORTATION	PLAN		F.A.P. RTE.	SECTION	COUNTY	TOTAL SHEETS	SHEET NO.	
ci:\pw_work\pwwork\swartzw\0156168\1d77422-sht-planprofile.dgn		DRAWN -	REVISED -		SCALE: 50	SHEET NO. 9 OF 16 SHEETS	STA. 311+00 TO STA. 341+00	741	(11,12)T	•	85	23
		CHECKED -	REVISED -									
		DATE -	REVISED -									
	PLOT DATE = 8/16/2011									CONTRACT NO. 74422		
ILLINOIS FED. AID PROJECT												

• MACON & PIATT