

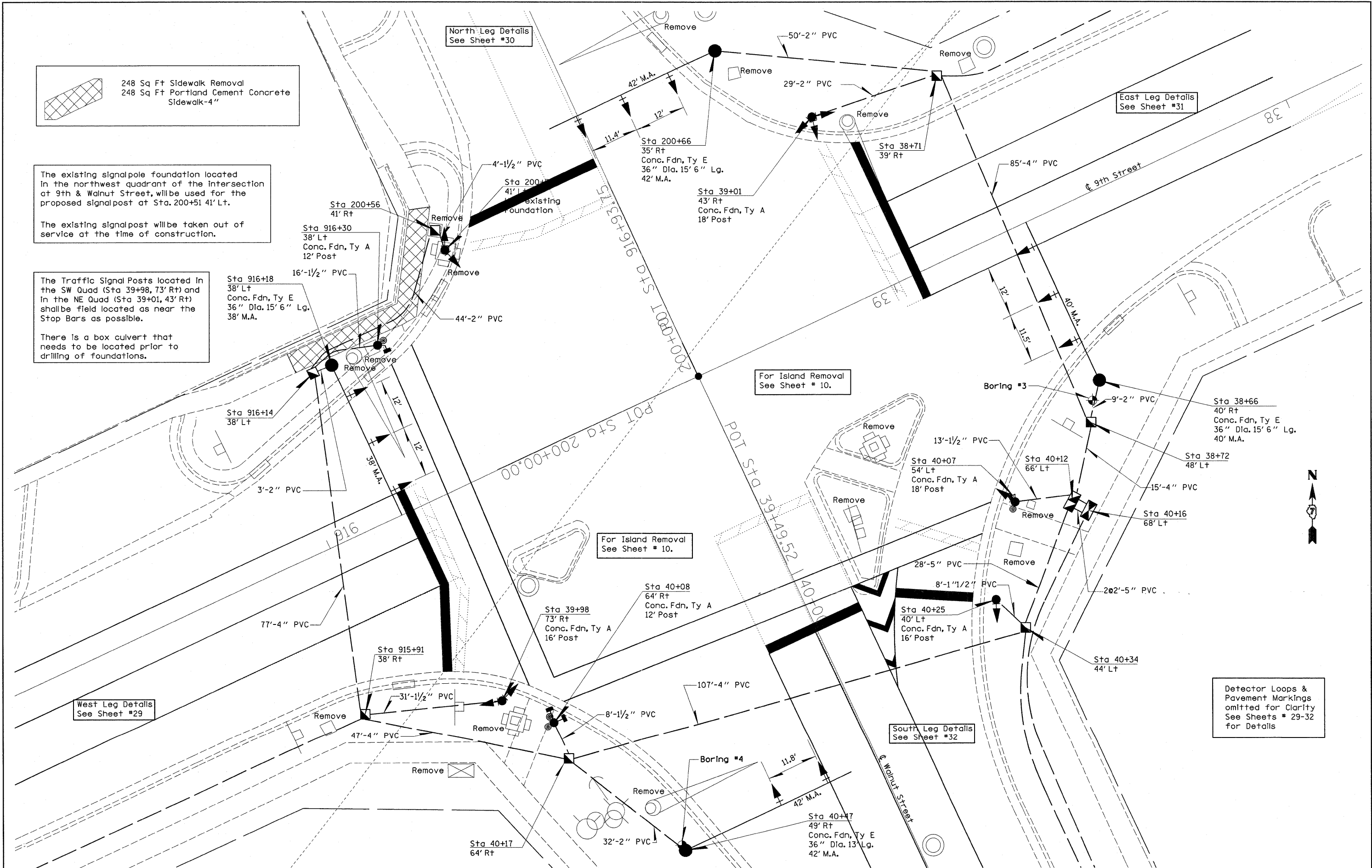
248 Sq Ft Sidewalk Removal
248 Sq Ft Portland Cement Concrete Sidewalk-4"

The existing signalpole foundation located in the northwest quadrant of the intersection at 9th & Walnut Street, will be used for the proposed signalpost at Sta. 200+51 41' Lt.

The existing signalpost will be taken out of service at the time of construction.

The Traffic Signal Posts located in the SW Quad (Sta 39+98, 73' Rt) and in the NE Quad (Sta 39+01, 43' Rt) shall be field located as near the Stop Bars as possible.

There is a box culvert that needs to be located prior to drilling of foundations.



North Leg Details
See Sheet #30

East Leg Details
See Sheet #31

West Leg Details
See Sheet #29

South Leg Details
See Sheet #32

Detector Loops & Pavement Markings omitted for Clarity See Sheets # 29-32 for Details

For Island Removal See Sheet # 10.

For Island Removal See Sheet # 10.

FILE NAME =	USER NAME = mcolellania	DESIGNED -	REVISED -
c:\pwork\pwork\mcolellania\d0177977\d074449-shr-TS.dgn		DRAWN -	REVISED -
PLOT SCALE = 10.0000' / 1"		CHECKED -	REVISED -
PLOT DATE = 9/8/2011		DATE -	REVISED -

**STATE OF ILLINOIS
DEPARTMENT OF TRANSPORTATION**

SIGNAL LAYOUT			
9th ST & WALNUT ST			
SCALE:	SHEET NO. OF SHEETS	STA. TO STA.	

F.A.P. RTE.	SECTION	COUNTY	TOTAL SHEETS	SHEET NO.
827	(103,104)RS-1,(122)RS-2	WABASH	44	27
CONTRACT NO. 74449				
ILLINOIS FED. AID PROJECT				