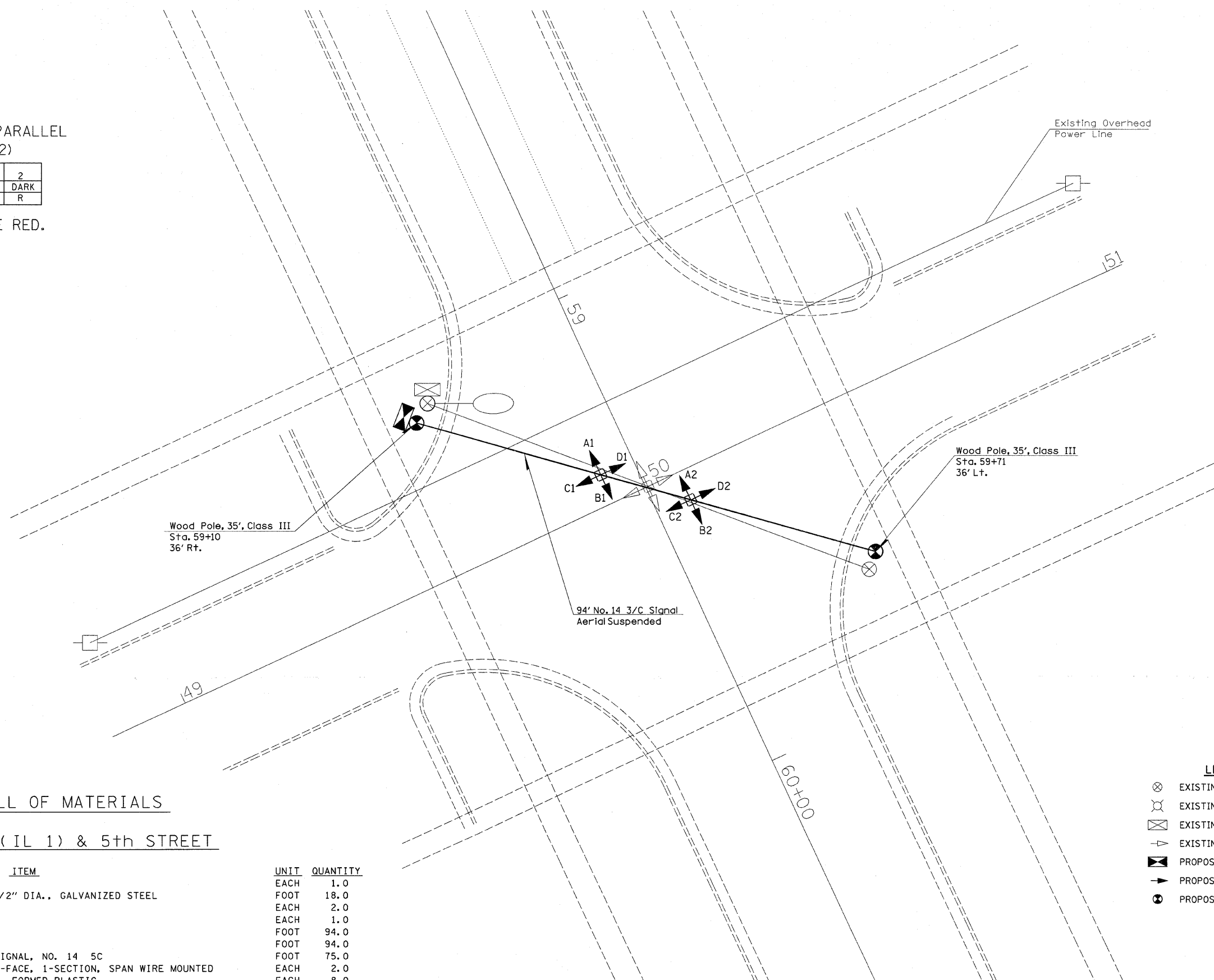




SIGNAL HEADS WIRED PARALLEL
(A1,B1,A2,B2) (C1,D1,C2,D2)

INTERVAL	1	2
SIGNAL HEAD A1, B1, A2, B2	R	DARK
SIGNAL HEAD C1, D1, C2, D2	DARK	R

ALL SIGNAL HEADS ARE RED.



BILL OF MATERIALS

FAP 827 (IL 1) & 5th STREET

ITEM	UNIT	QUANTITY
SERVICE INSTALLATION, TYPE A	EACH	1.0
CONDUIT ATTACHED TO STRUCTURE, 1 1/2" DIA., GALVANIZED STEEL	FOOT	18.0
LIGHT POLE, WOOD, 35 FT., CLASS 3	EACH	2.0
FLASHER CONTROLLER	EACH	1.0
SPAN WIRE	FOOT	94.0
TETHER WIRE	FOOT	94.0
ELECTRIC CABLE AERIAL SUSPENDED, SIGNAL, NO. 14 5C	FOOT	75.0
SIGNAL HEAD, POLYCARBONATE, LED, 4-FACE, 1-SECTION, SPAN WIRE MOUNTED	EACH	2.0
TRAFFIC SIGNAL BACKPLATE, LOUVERED, FORMED PLASTIC	EACH	8.0
REMOVE EXISTING FLASHING BEACON INSTALLATION COMPLETE	EACH	1.0

LEGEND

- ⊗ EXISTING WOOD POLE
- ⊘ EXISTING LIGHT POLE
- ⊠ EXISTING CONTROLLER & CABINET
- ⤴ EXISTING SIGNAL HEAD
- ⊠ (with diagonal lines) PROPOSED FLASHER CONTROLLER
- ⤴ (with arrow) PROPOSED SIGNAL HEAD
- ⊗ (with circle) PROPOSED WOOD POLE

FILE NAME =	USER NAME = mcelleanle	DESIGNED -	REVISED -	STATE OF ILLINOIS DEPARTMENT OF TRANSPORTATION	FLASHING BEACON LAYOUT 5th ST & WALNUT ST	F.A.P. RTE. 827	SECTION (103,104)RS-2,(122)RS-2	COUNTY WABASH	TOTAL SHEETS 44	SHEET NO. 34
CONTRACT NO. 74449	SCALE:	SHEET NO. OF SHEETS	STA. TO STA.			ILLINOIS FED. AID PROJECT				
PLOT SCALE = 10.0000' / 1" =	CHECKED -	REVISED -								
PLOT DATE = 9/6/2011	DATE -	REVISED -								