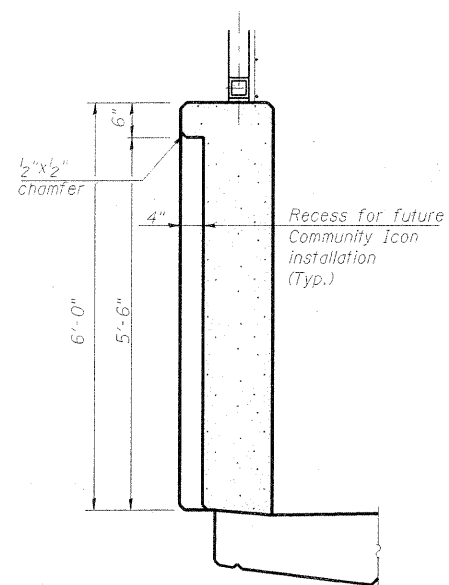
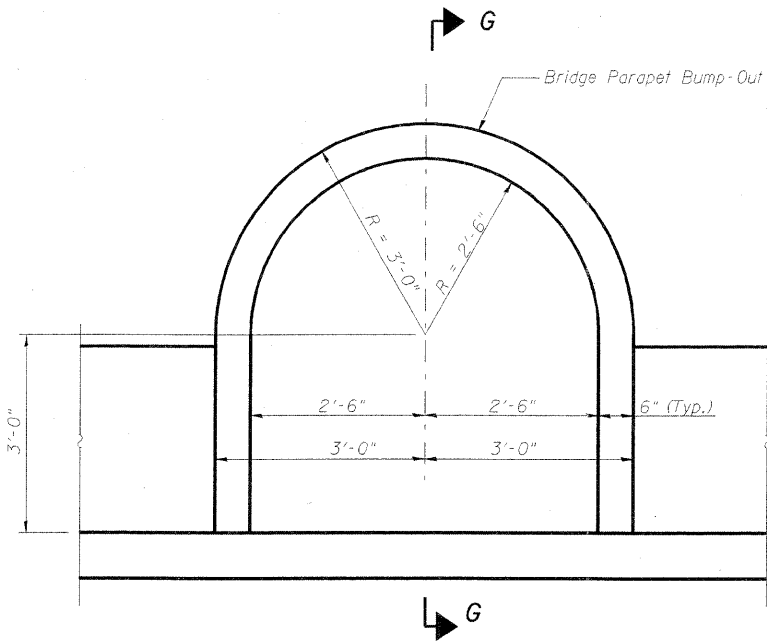


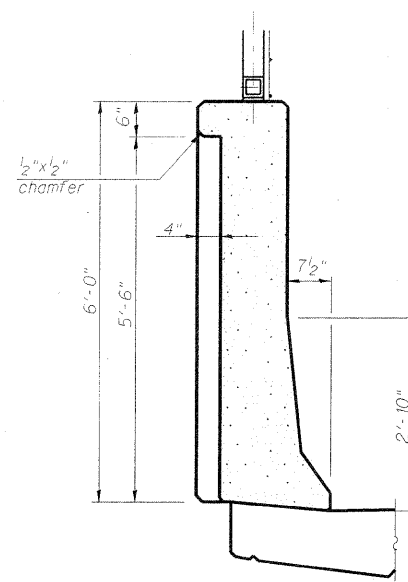
STATE OF ILLINOIS  
DEPARTMENT OF TRANSPORTATION



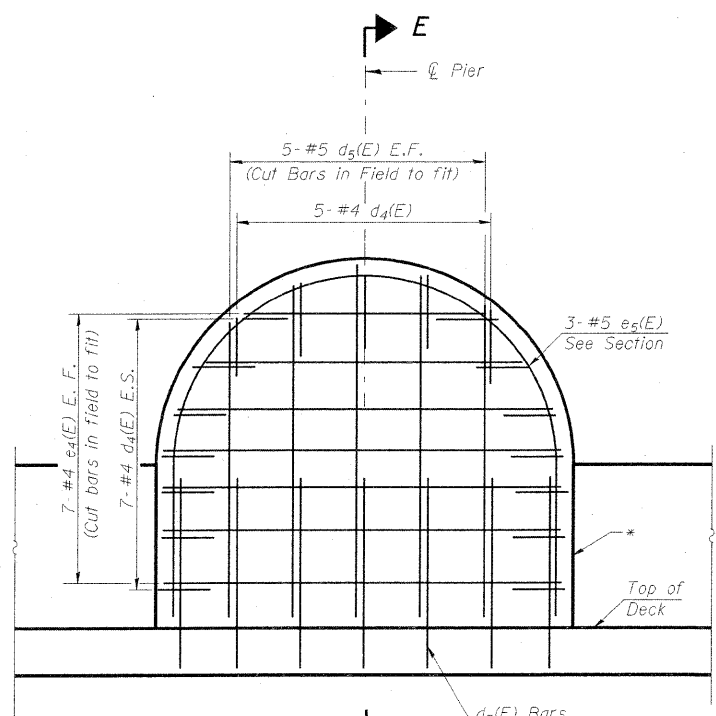
**SECTION G-G**  
(Sidewalk Parapet)



**COMMUNITY ICON PARAPET OUTSIDE FACE ELEVATION**

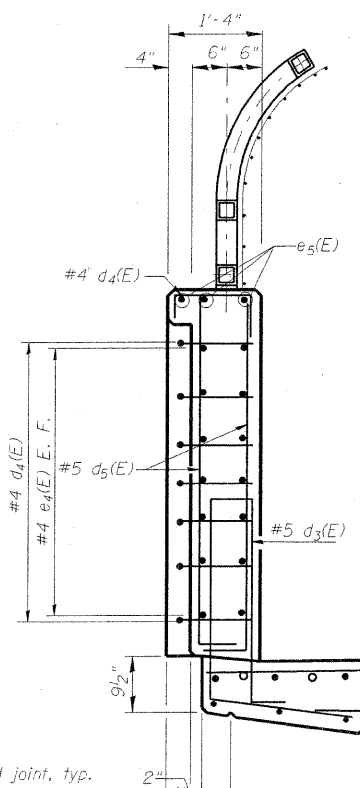


**SECTION G-G**  
(Roadway West Parapet)



**DETAIL E**

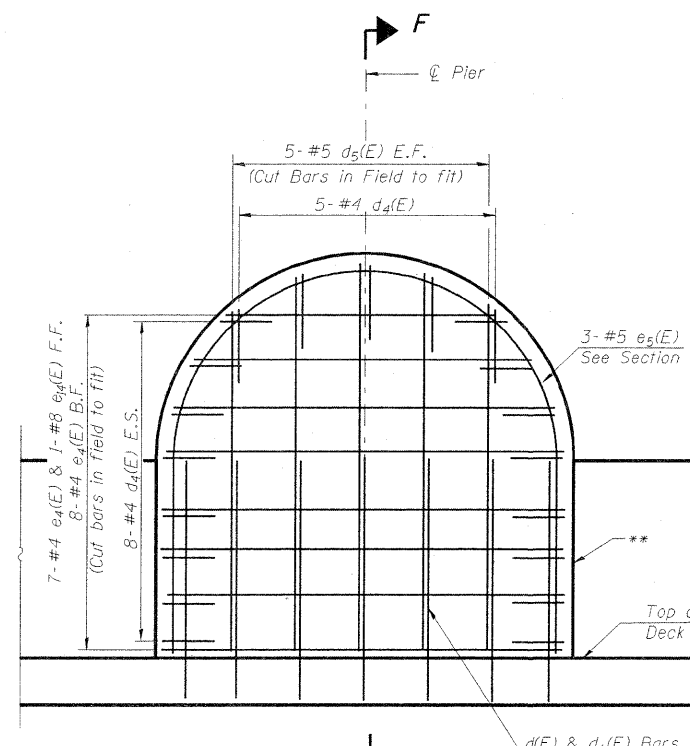
(See Community Icon Parapet Elevation for dimensions)



**SECTION E-E**

\* Sealed, cork filled joint, typ. both sides of Community Icon. See Sht. S13 of S36 for detail.

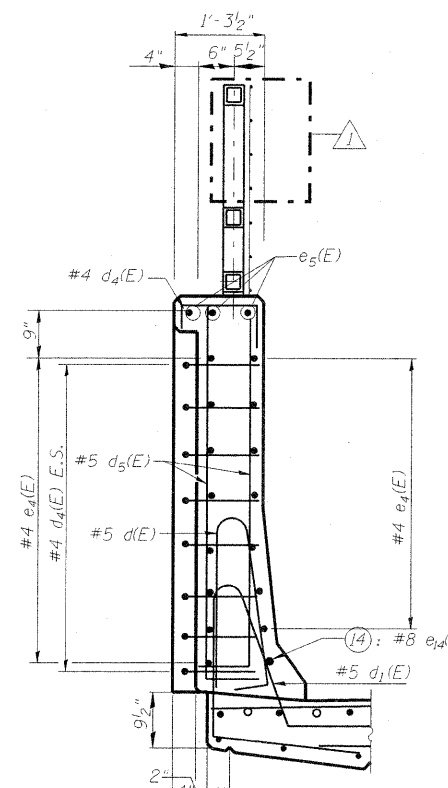
**AT SIDEWALK PARAPET**



**DETAIL F**

(See Community Icon Parapet Elevation for dimensions)

**AT ROADWAY WEST PARAPET**



**SECTION F-F**

\*\* Aluminum sheet joint in base of parapet; sealed, cork filled joint in top of parapet, typ. both sides of Community Icon. See Sht. S13 of S36 for detail.

**COMMUNITY ICON  
PARAPET DETAILS  
STRUCTURE NO. 082-0326**

**AECOM**

303 East Wacker Drive, Suite 600  
Chicago, Illinois 60601  
Ph: 312.938.0300  
Fax: 312.373.6806  
www.aecom.com

DESIGNED	-P.J.L.
CHECKED	-D.D.B.
DRAWN	-B.R.D.
CHECKED	-D.D.B.

03/31/2011

SHEET NO. S12	F.A.I. RTE.	SECTION	COUNTY	TOTAL SHEETS	SHEET NO.
64	82-1-3HB, 82-2N, 82-1-12RS		ST. CLAIR	352	214
S36 SHEETS		F.A.U. 9166 / F.A.U. 9180		CONTRACT NO. 76C51	
FED. ROAD DIST. NO.		ILLINOIS FED. AID PROJECT			