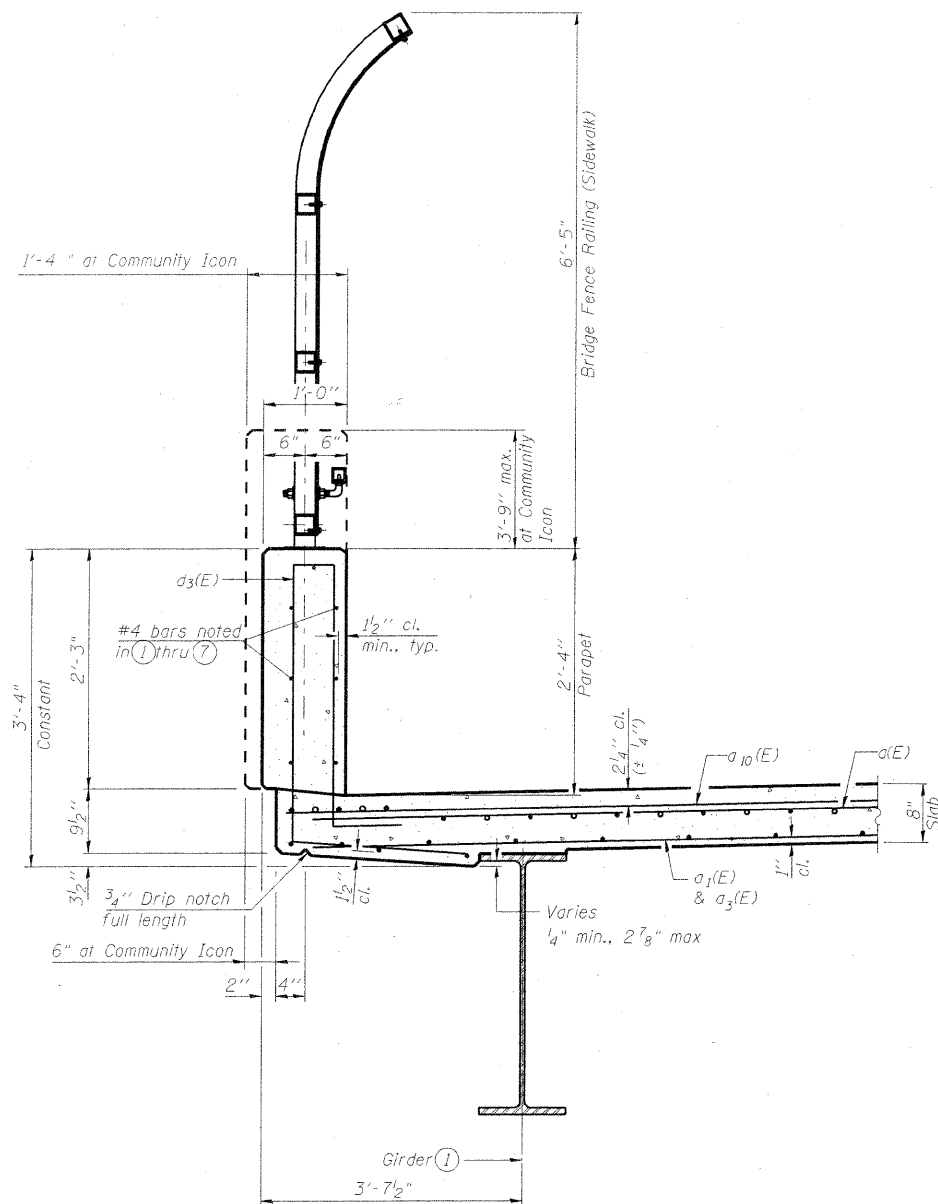
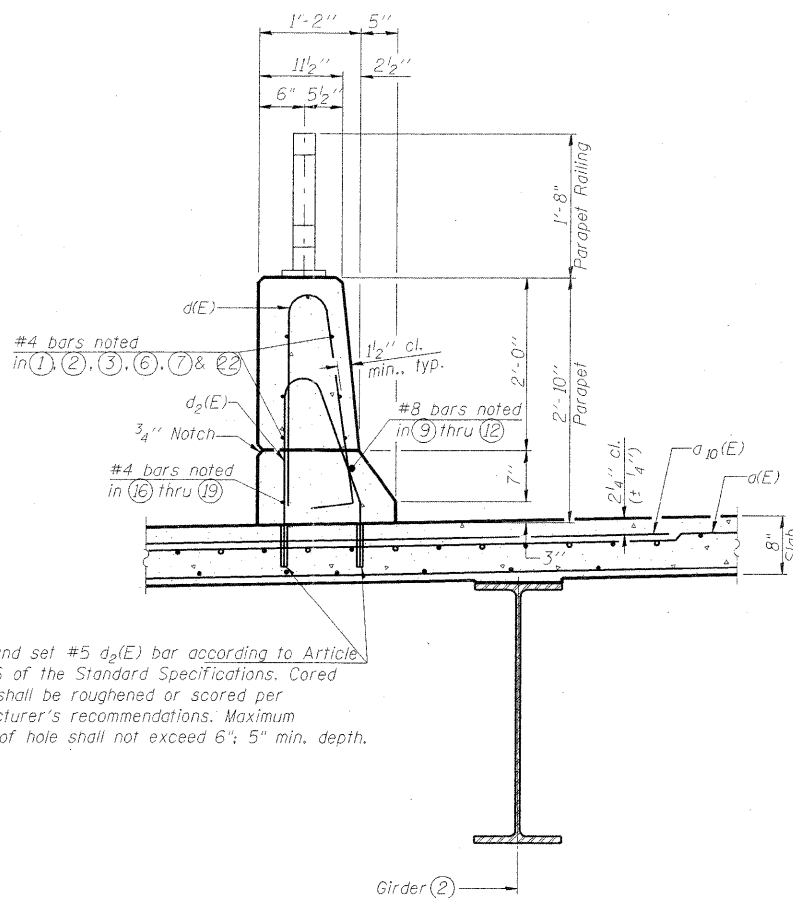


STATE OF ILLINOIS
DEPARTMENT OF TRANSPORTATION



SECTION THRU SIDEWALK PARAPET

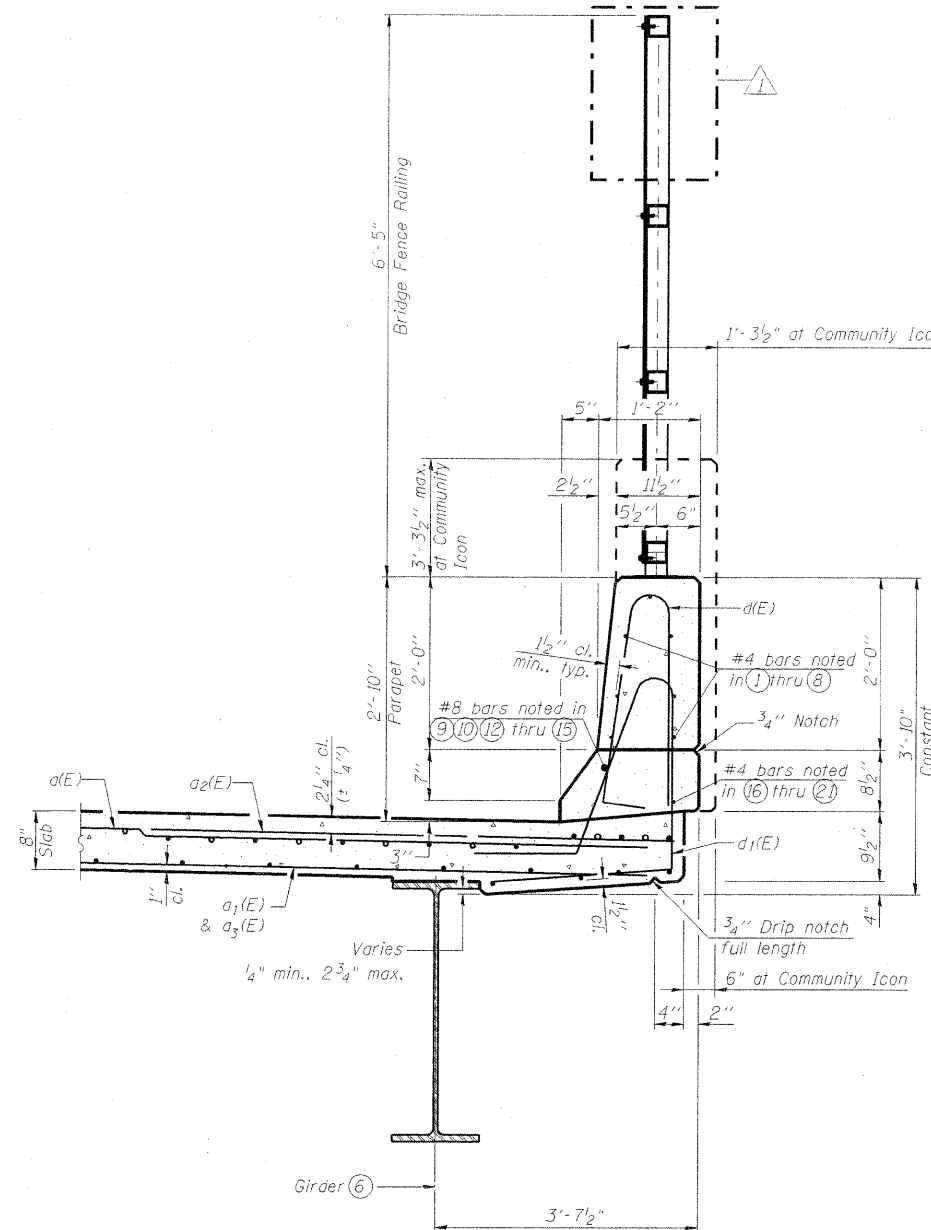
Note: 4" bump-out on outside face of Community Icon, Typ. Sidewalk and Roadway West Parapets.



SECTION THRU ROADWAY EAST PARAPET

(See Deck Cross Section for deck reinforcement)

Core and set #5 $a_2(E)$ bar according to Article 509.06 of the Standard Specifications. Cored holes shall be roughened or scored per manufacturer's recommendations. Maximum depth of hole shall not exceed 6"; 5" min. depth.

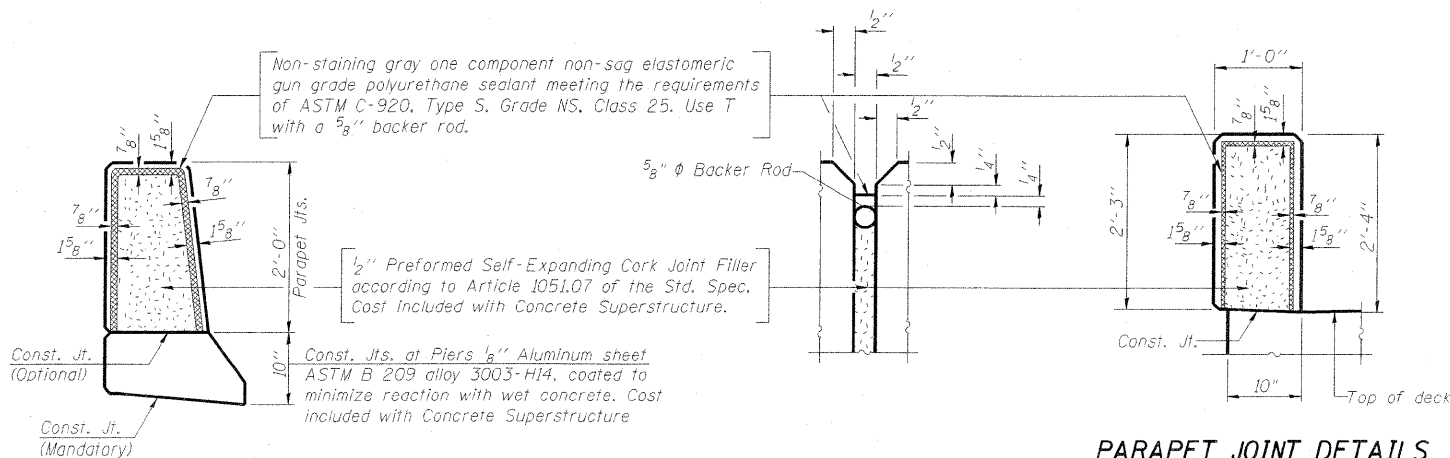


SECTION THRU ROADWAY WEST PARAPET

AECOM

303 East Wacker Drive, Suite 600
Chicago, Illinois 60601
Ph: 312.938.0300
Fax: 312.373.6806
www.aecom.com

DESIGNED	- P.J.L.
CHECKED	- D.D.B.
DRAWN	- B.R.D.
CHECKED	- D.D.B.
03/31/2011	



PARAPET JOINT DETAILS

**PARAPET JOINT DETAILS
AT SIDEWALK**

Note:
Reinforcement bars shall not pass thru aluminum sheets and cork joint filler.
Parapet Sections shown on Bridge Deck; details similar on Bridge Approach Slabs.

Parapet Cross References:
Parapet Elevation Views - Sht. 11 of S36
Parapet Details at Community Icon - Sht. S12 of S36
Parapet Reinforcement Schedule - Sht. S15 of S36

**PARAPET DETAILS
STRUCTURE NO. 082-0326**

SHEET NO. S13	F.A.I. RTE.	SECTION	COUNTY	TOTAL SHEETS	SHEET NO.
	64	82-1-3HB, 82-2N, 82-1-12RS	ST. CLAIR	352	215
S36 SHEETS		F.A.U. 9166 / F.A.U. 9180		CONTRACT NO. 76C51	
FED. ROAD DIST. NO.		ILLINOIS FED. AID PROJECT			