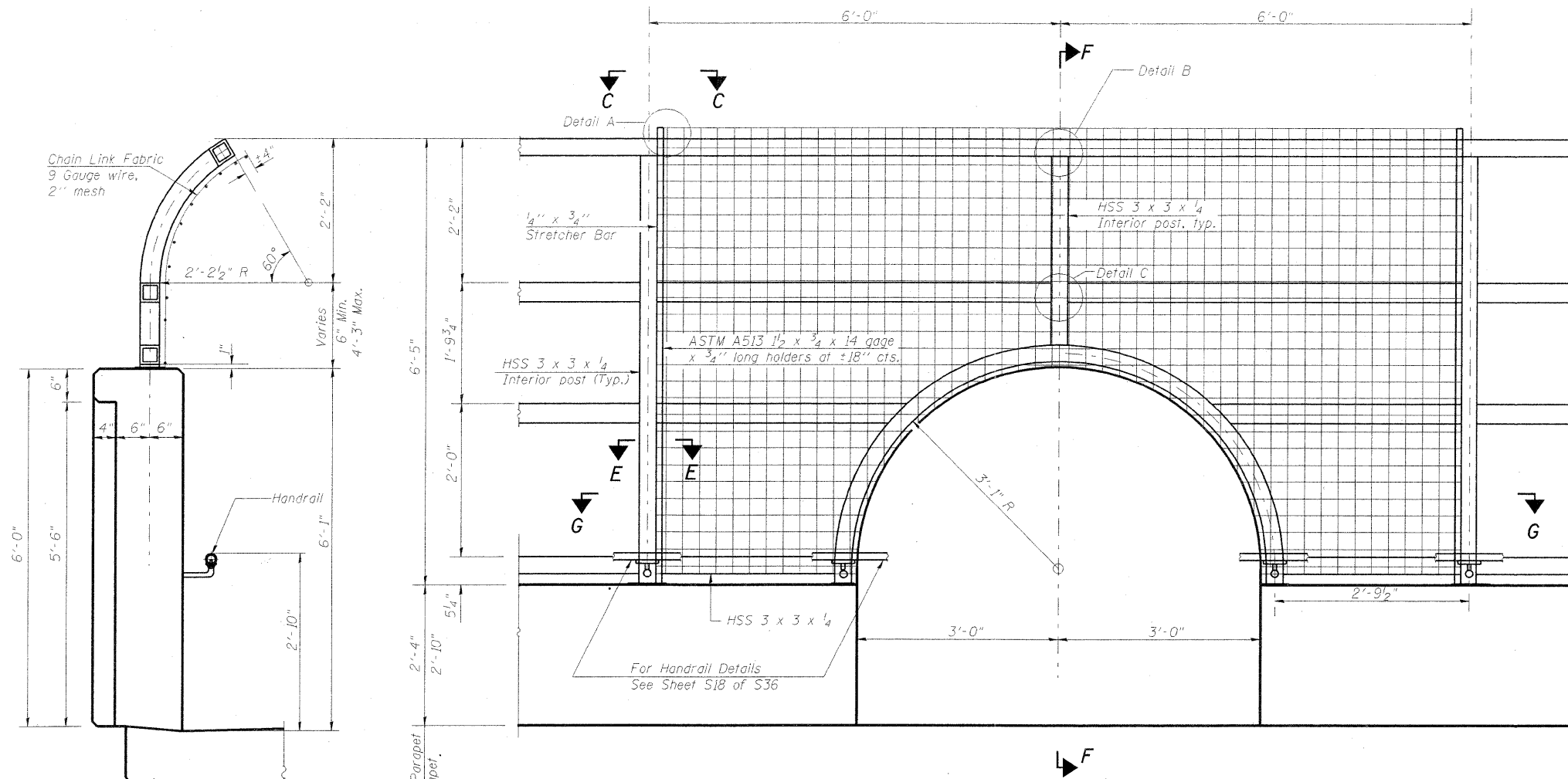
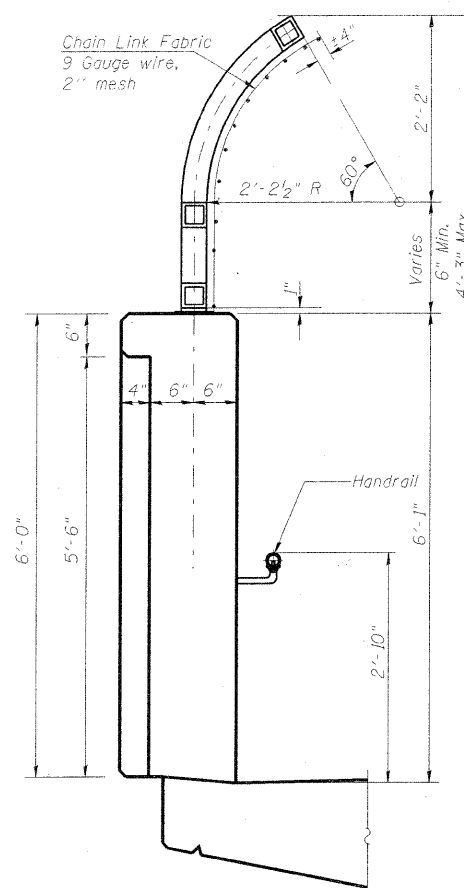


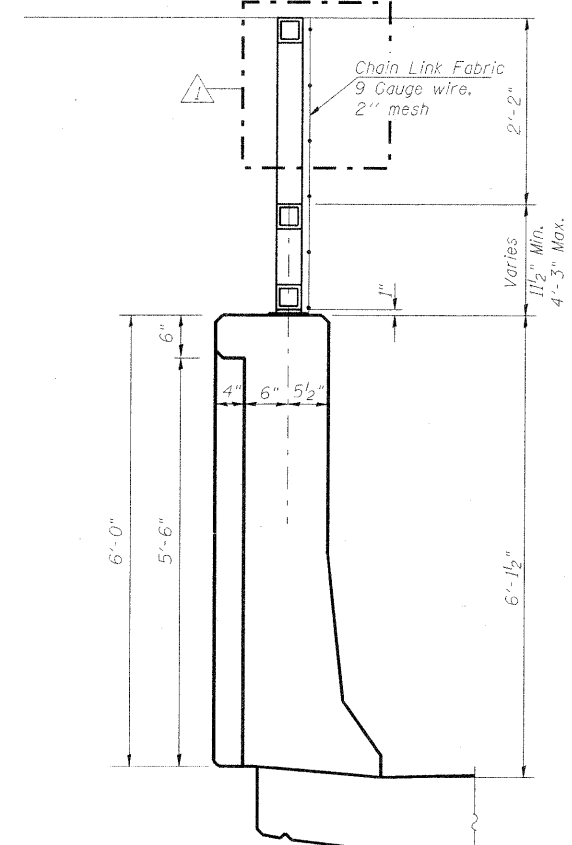
STATE OF ILLINOIS
DEPARTMENT OF TRANSPORTATION



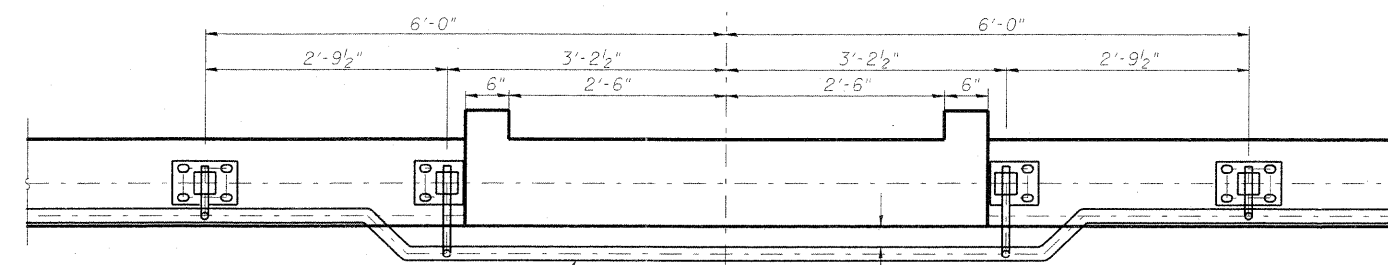
ELEVATION AT PIER
(Showing inside face)



SECTION F-F
(For Sidewalk Parapet)



SECTION F-F
(For Roadway West Parapet)



SECTION G-G

Note:
For details and sections see Sht. S12 of S36.

AECOM
303 East Wacker Drive, Suite 600
Chicago, Illinois 60601
Ph: 312.938.0300
Fax: 312.373.6806
www.aecom.com

DESIGNED	- P.J.L.
CHECKED	- D.D.B.
DRAWN	- B.R.D.
CHECKED	- D.D.B.

03/31/2011

BRIDGE FENCE RAILING DETAILS - II
STRUCTURE NO. 082-0326

SHEET NO. S19 S36 SHEETS	F.A.I. RTE.	SECTION	COUNTY	TOTAL SHEETS	SHEET NO.
	64	82-1-3HB, 82-2N, 82-1-12RS	ST. CLAIR	352	221
F.A.U. 9166 / F.A.U. 9180		CONTRACT NO. 76C51			
FED. ROAD DIST. NO.		ILLINOIS FED. AID PROJECT			