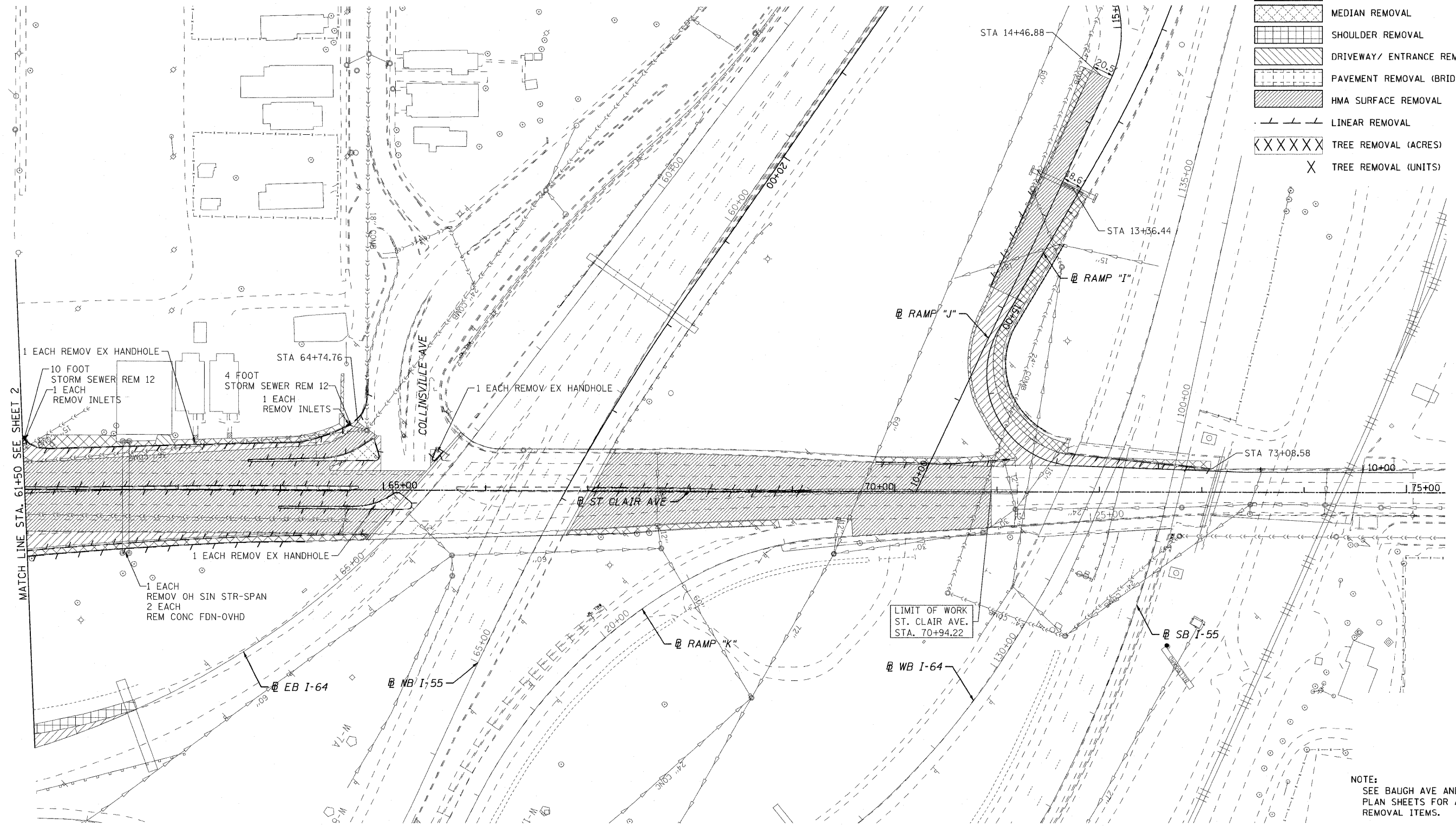
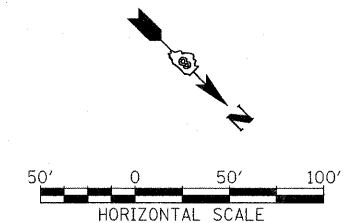


LEGEND:

	PAVEMENT REMOVAL
	SIDEWALK REMOVAL
	MEDIAN REMOVAL
	SHOULDER REMOVAL
	DRIVEWAY/ ENTRANCE REMOVAL
	PAVEMENT REMOVAL (BRIDGE APPROACH)
	HMA SURFACE REMOVAL
	LINEAR REMOVAL
	TREE REMOVAL (ACRES)
	TREE REMOVAL (UNITS)



NOTE:
SEE BAUGH AVE AND ST. CLAIR AVE
PLAN SHEETS FOR ADDITIONAL
REMOVAL ITEMS.



FILE NAME = DBTRI-76C51-shr-rem-01-03.dgn USER NAME = sms MODEL NAME = DBTRI-76C51-shr-rem-03 PLOT SCALE = 1:60 PLOT DATE = 6/15/2011	DESIGNED - SMS DRAWN - SMS CHECKED - GEB DATE - 03/31/11	REVISED - REVISED - REVISED - REVISED -	STATE OF ILLINOIS DEPARTMENT OF TRANSPORTATION	REMOVAL PLAN - LOCAL ROADS AND RAMPS		F.A.U. RTE. SECTION COUNTY TOTAL SHEETS SHEET NO.
	SCALE: 1"=50' SHEET NO. 3 OF 3 SHEETS STA. 61+50.00 TO STA. 75+38.00			• 82-1-3HB, 82-2N, 82-1-12RS • FAI 64/9166/9180	ST. CLAIR CONTRACT NO. 76C51	352 32

6/15/2011 1:08:30 PM
 P:\08-0830 CTE TRILEVEL\900_CAD\901_DRAWINGS\08_CONTRACT\SHEET\01\ROADWAY_PLANS\08TRI-76C51-SHR-REM-01-03.DGN