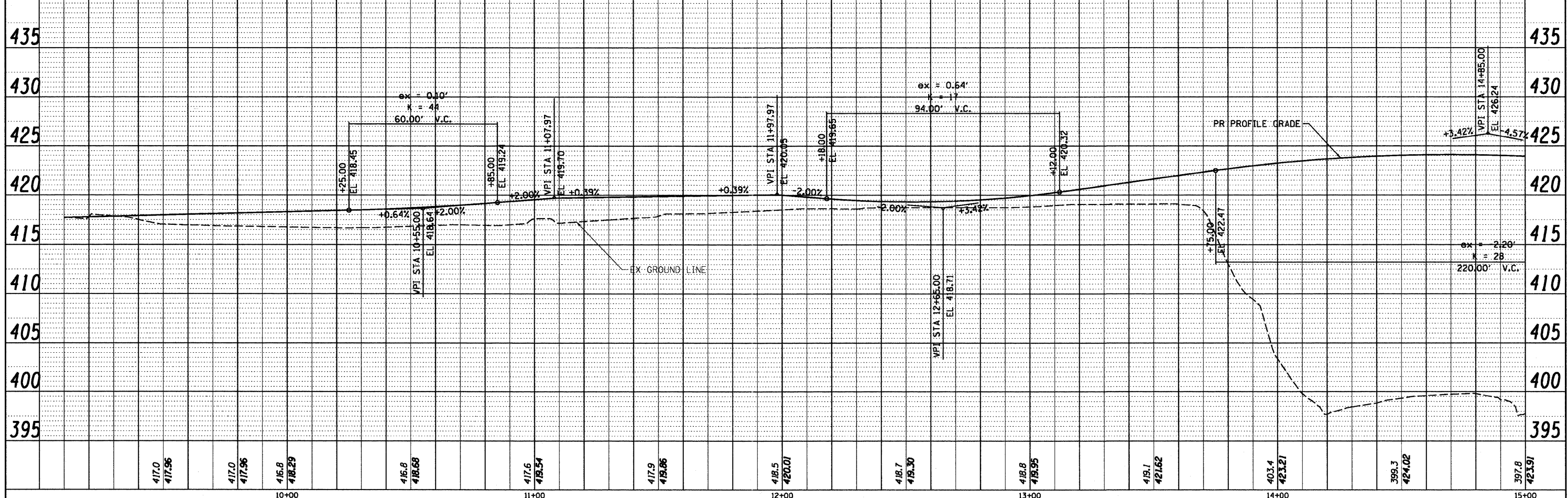
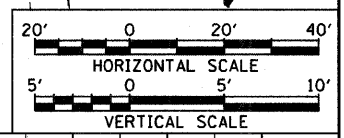
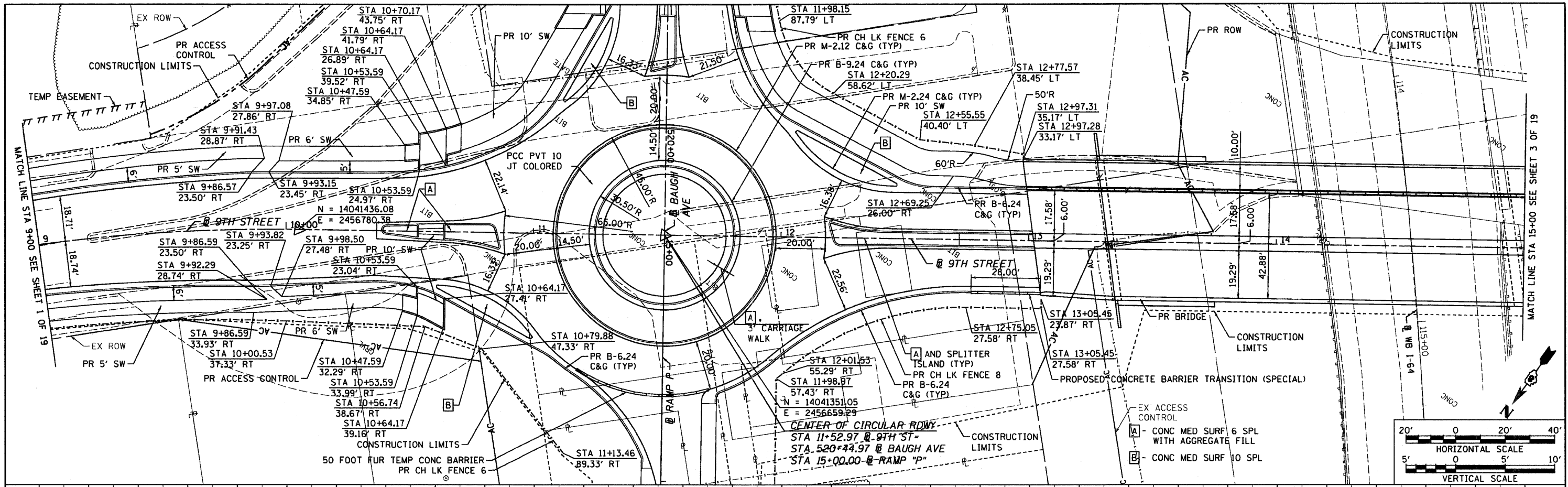


PLAN	DATE
SURVEYED	
ALIGNED	
CHECKED	
RT. OF WAY	
CHECKED	
NO. 1	
NO. 2	
NO. 3	
NO. 4	
NO. 5	
NO. 6	
NO. 7	
NO. 8	
NO. 9	
NO. 10	
NO. 11	
NO. 12	
NO. 13	
NO. 14	
NO. 15	
NO. 16	
NO. 17	
NO. 18	
NO. 19	

PROFILE	DATE
SURVEYED	
GRADES	
CHECKED	
S.M. NOTED	
STRUCTURE	
NOTATIONS	
CHRD	
NO. 1	
NO. 2	
NO. 3	
NO. 4	
NO. 5	
NO. 6	
NO. 7	
NO. 8	
NO. 9	
NO. 10	
NO. 11	
NO. 12	
NO. 13	
NO. 14	
NO. 15	
NO. 16	
NO. 17	
NO. 18	
NO. 19	



FILE NAME =	USER NAME = pimsarno	DESIGNED - LDC	REVISED -	STATE OF ILLINOIS DEPARTMENT OF TRANSPORTATION PLAN AND PROFILE 9TH STREET	SECTION 82-1-3HB, 82-2N, 82-1-12RS COUNTY ST. CLAIR TOTAL SHEETS 352 SHEET NO. 36
MODEL NAME = #MODELNAME#	DRAWN - JDF	REVISED -			
PLOT SCALE = 48.0000' / in.	CHECKED - GEB	REVISED -			
PLOT DATE = 9/18/2011	DATE - 09/09/11	REVISED -			
SCALE: 1"=20'				SHEET NO. 2 OF 19 SHEETS	STA. 9+00.00 TO STA. 15+00.00
FED. ROAD DIST. NO. ILLINOIS FED. AID PROJECT				CONTRACT NO. 76C51	

9/16/2011 9:16:48 AM

P:\P6246609\500.SUBMITTALS\501.CONTRACT_PACKAGE.SUBMITTALS\501.4.FINAL\501.4.B.CONTR.76C51\501.4.B.1.SUBMITTAL\2011-09-09\08YR1-76C51-SHT-PLANPRF-001-01.B.DGN