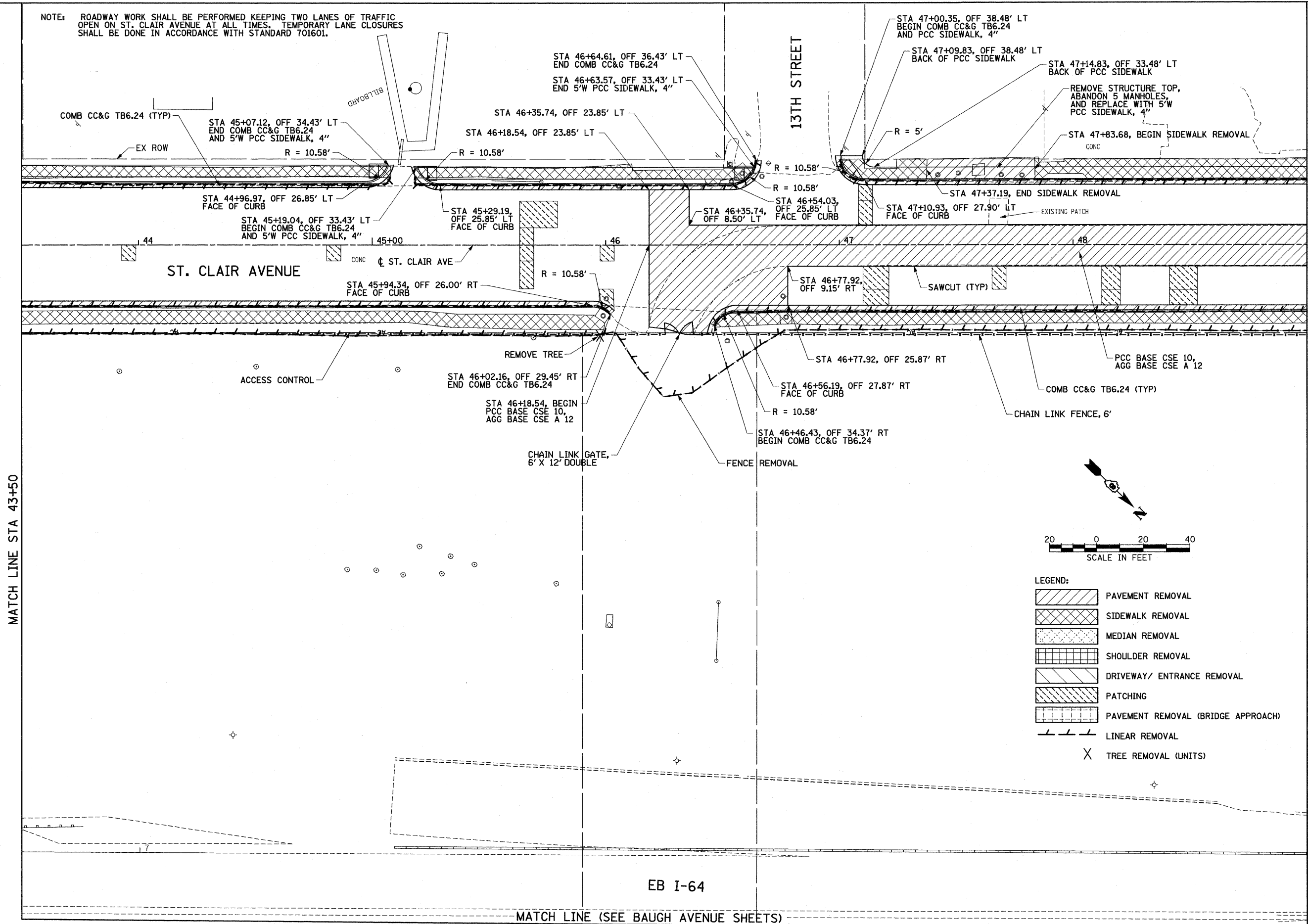
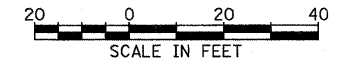


NOTE: ROADWAY WORK SHALL BE PERFORMED KEEPING TWO LANES OF TRAFFIC OPEN ON ST. CLAIR AVENUE AT ALL TIMES. TEMPORARY LANE CLOSURES SHALL BE DONE IN ACCORDANCE WITH STANDARD 701601.



MATCH LINE STA 43+50

MATCH LINE STA 49+00



LEGEND:

	PAVEMENT REMOVAL
	SIDEWALK REMOVAL
	MEDIAN REMOVAL
	SHOULDER REMOVAL
	DRIVEWAY/ ENTRANCE REMOVAL
	PATCHING
	PAVEMENT REMOVAL (BRIDGE APPROACH)
	LINEAR REMOVAL
	TREE REMOVAL (UNITS)

**STATE OF ILLINOIS
DEPARTMENT OF TRANSPORTATION**

ROADWAY PLAN - ST. CLAIR AVENUE

FILE NAME = N:\E00037 CTE - I-70 Tr-1-Level Connection
 USER NAME = USER
 MODEL NAME = MODELNAME
 PLOT SCALE = 40.000' / IN.
 PLOT DATE = 4/12/2011

DESIGNED - TTB	REVISED -
DRAWN - GDO	REVISED -
CHECKED - JAH	REVISED -
DATE - 03/31/11	REVISED -

SCALE: 1"=20'	SHEET NO. 10 OF 19 SHEETS	STA. TO STA.
---------------	---------------------------	--------------

F.A.U. RTE.	SECTION	COUNTY	TOTAL SHEETS	SHEET NO.
	82-1-3HB, 82-2N, 82-1-12RS	ST. CLAIR	352	44
	9166/9180/9213/9214		CONTRACT NO. 76C51	
FED. ROAD DIST. NO.	ILLINOIS FED. AID PROJECT			

4/12/2011 8:11:45 AM