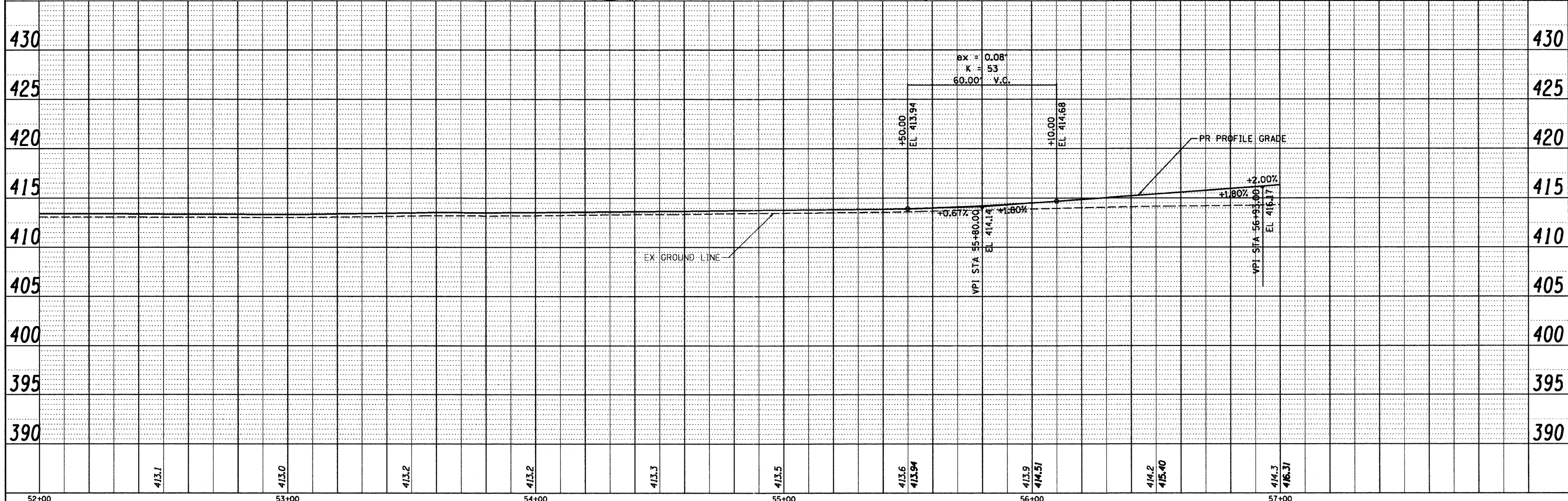
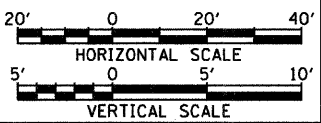
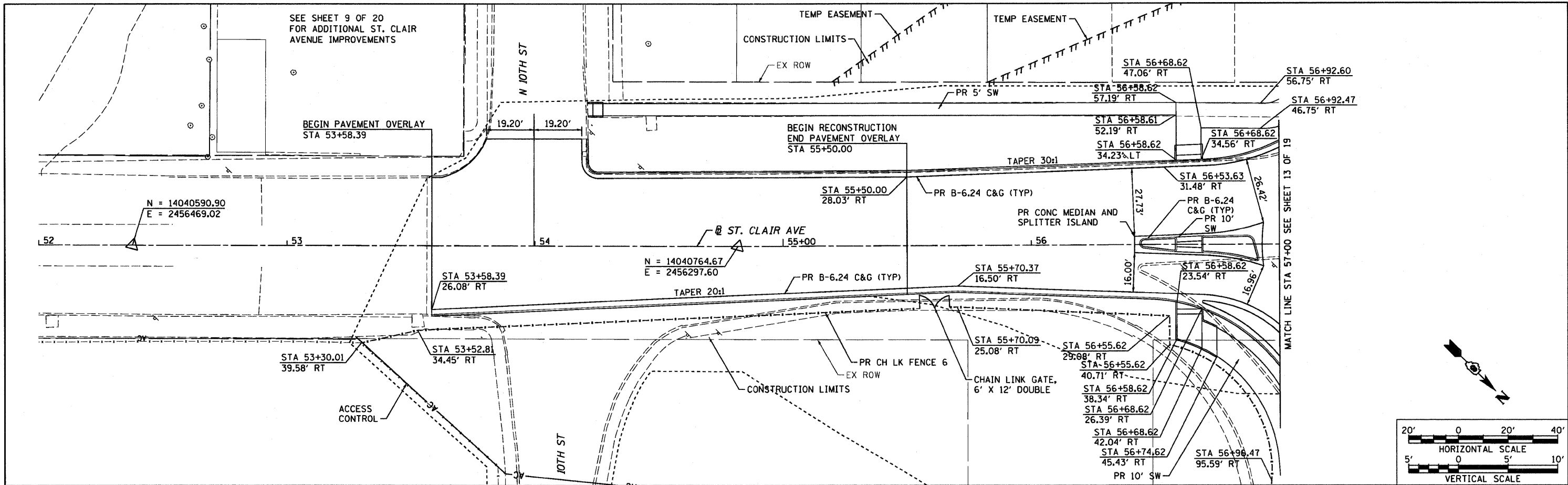


DATE	
BY	
PLAN	
SURVEYED	
ALIGNED	
CHECKED	
RT. OF WAY	
CHECKED	
NO. OF WAY	
CHECKED	
NO.	
NO.	

DATE	
BY	
PROFILE	
SURVEYED	
GRADES	
CHECKED	
B.M. NOTED	
STRUCTURE	
NOTATIONS	
CHRD	
NO.	



FILE NAME = DBTRI-76C51-sht-plnpr-001-018.dgn USER NAME = pimsarno MODEL NAME = #MODELNAME# PLOT SCALE = 48.0000' / in. PLOT DATE = 10/4/2011	DESIGNED - LDC DRAWN - JDF CHECKED - GEB DATE - 10/04/11	REVISED - REVISED - REVISED - REVISED -	STATE OF ILLINOIS DEPARTMENT OF TRANSPORTATION SCALE: 1"=20' SHEET NO. 12 OF 19 SHEETS STA. 53+51.24 TO STA. 57+00.00	PLAN AND PROFILE ST. CLAIR AVENUE F.A.U. RTE. SECTION COUNTY TOTAL SHEETS SHEET NO. 82-1-3HB, 82-2N, 82-1-12RS ST. CLAIR 352 46 FAI 64/9166/9180 CONTRACT NO. 76C51 FED. ROAD DIST. NO. ILLINOIS FED. AID PROJECT
---	---	--	---	--

10/4/2011 2:43:33 PM P:\P60246629\502 SUBMITTALS\501 CONTRACT PACKAGE SUBMITTALS\501.4.FINAL\501.4.B.CONTR.76C51\501.4.B.1.SUBMITTALS\FINAL NOVEMBER LETTING\DCN\DBTRI-76C51-SHT-PLNPR-001-018.DGN