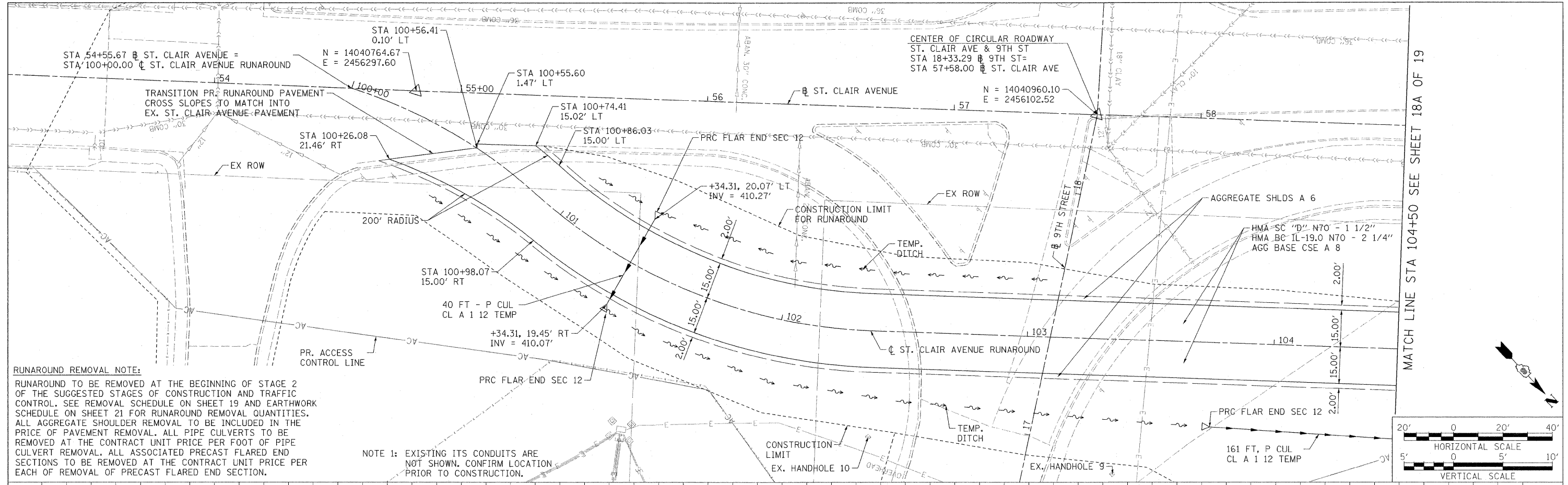


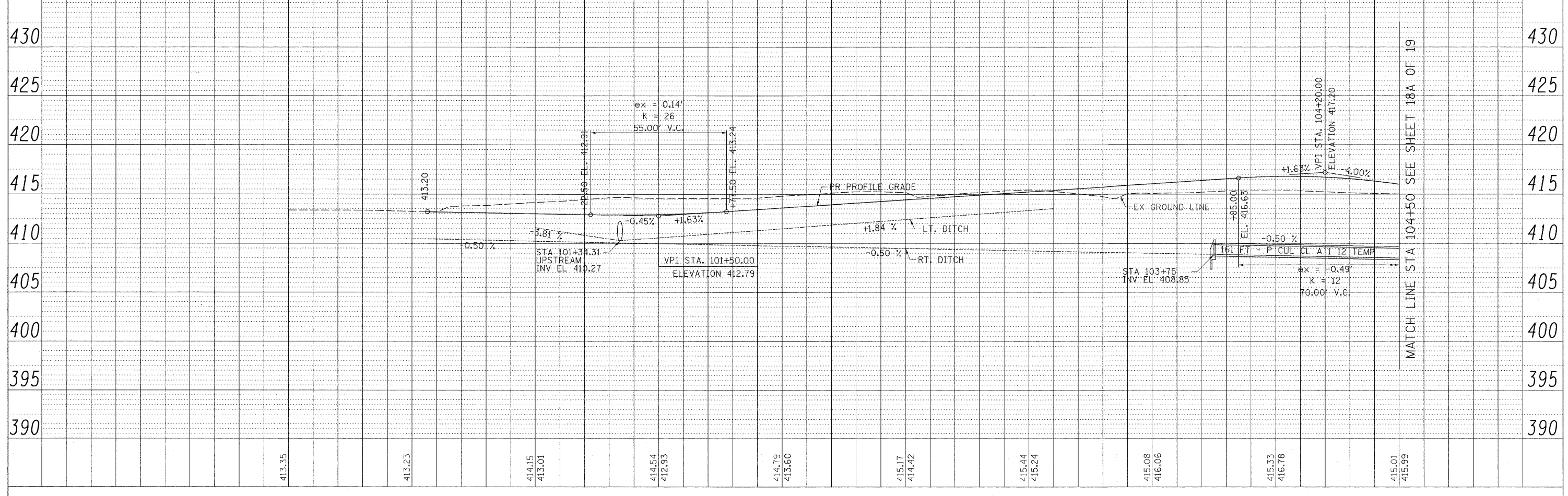
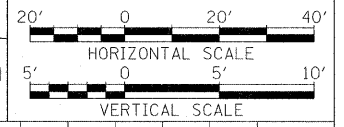
PLAN	REVISIONS	DATE
NO.	NO.	
NO.	NO.	
NO.	NO.	
NO.	NO.	
NO.	NO.	
NO.	NO.	
NO.	NO.	
NO.	NO.	
NO.	NO.	

PROFILE	REVISIONS	DATE
NO.	NO.	
NO.	NO.	
NO.	NO.	
NO.	NO.	
NO.	NO.	
NO.	NO.	
NO.	NO.	
NO.	NO.	
NO.	NO.	



RUNAROUND REMOVAL NOTE:
 RUNAROUND TO BE REMOVED AT THE BEGINNING OF STAGE 2 OF THE SUGGESTED STAGES OF CONSTRUCTION AND TRAFFIC CONTROL. SEE REMOVAL SCHEDULE ON SHEET 19 AND EARTHWORK SCHEDULE ON SHEET 21 FOR RUNAROUND REMOVAL QUANTITIES. ALL AGGREGATE SHOULDER REMOVAL TO BE INCLUDED IN THE PRICE OF PAVEMENT REMOVAL. ALL PIPE CULVERTS TO BE REMOVED AT THE CONTRACT UNIT PRICE PER FOOT OF PIPE CULVERT REMOVAL. ALL ASSOCIATED PRECAST FLARED END SECTIONS TO BE REMOVED AT THE CONTRACT UNIT PRICE PER EACH OF REMOVAL OF PRECAST FLARED END SECTION.

NOTE 1: EXISTING ITS CONDUITS ARE NOT SHOWN. CONFIRM LOCATION PRIOR TO CONSTRUCTION.



FILE NAME = DBTRI-76C51-sht-plnpr-001-018.dgn
 USER NAME = morensk
 MODEL NAME = #MODELNAME#
 PLOT SCALE = 28.0000' / 1" / in.
 PLOT DATE = MAR. 31, 2011

DESIGNED - KM	REVISED -
DRAWN - KM	REVISED -
CHECKED - DBM	REVISED -
DATE - 08/18/11	REVISED -

**STATE OF ILLINOIS
 DEPARTMENT OF TRANSPORTATION**

PLAN AND PROFILE RUNAROUND

SCALE: 1"=20'
 SHEET NO. 18 OF 19 SHEETS
 STA. 100+00.0 TO STA. 105+52.56

F.A.U. RTE.	SECTION	COUNTY	TOTAL SHEETS	SHEET NO.
82-1-3HB, 82-2N, 82-1-12RS	ST. CLAIR	352	52	
FAI 64/9166/9180	CONTRACT NO.	76C51		
FED. ROAD DIST. NO.	ILLINOIS FED. AID PROJECT			

P:\66046629\500_SUBMITTALS\501_CONTRACT_PACKAGE_SUBMITTALS\501_4_FINAL\501_4_8_CONTR_76C51\501_4_8_1_SUBMITTAL\RUNAROUND REVISIONS TO 1001\SHEET\DBTRI-76C51-SHT-PLNPR-001-018.DGN