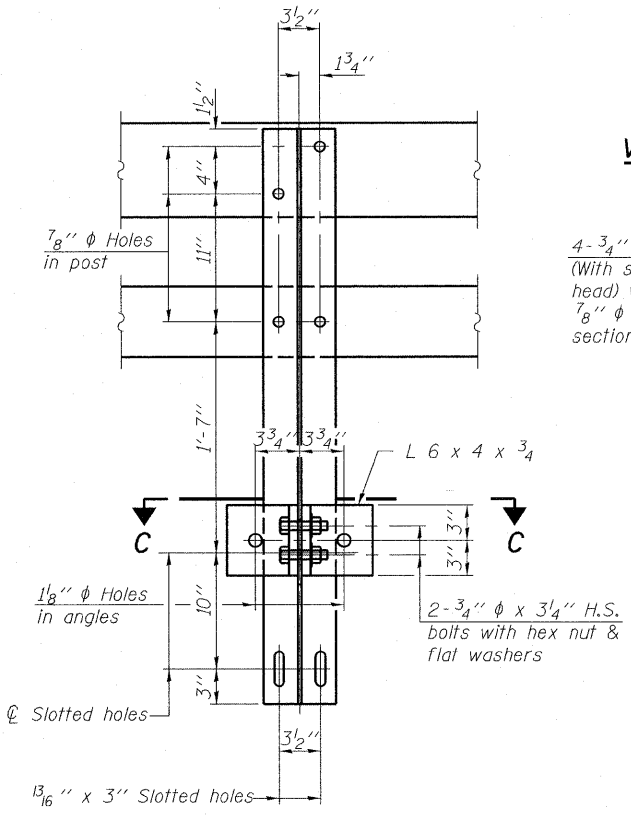
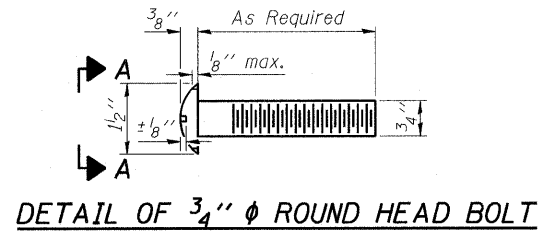
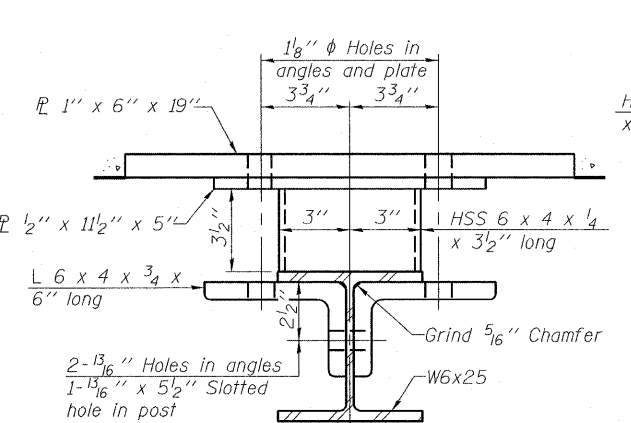


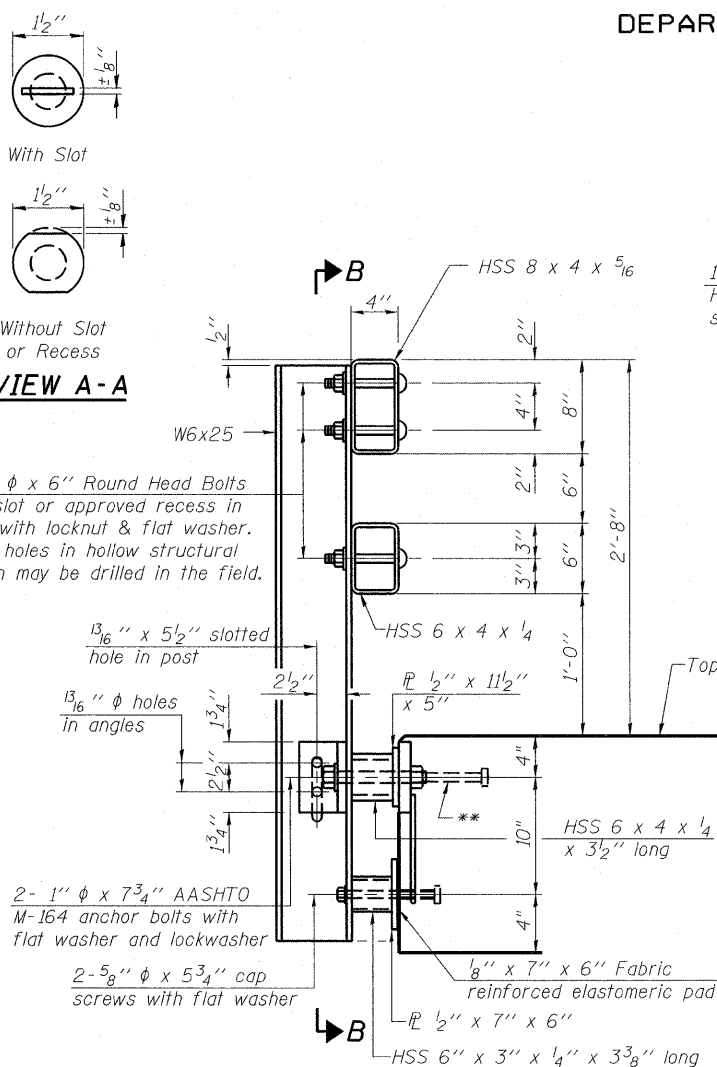
STATE OF ILLINOIS
DEPARTMENT OF TRANSPORTATION



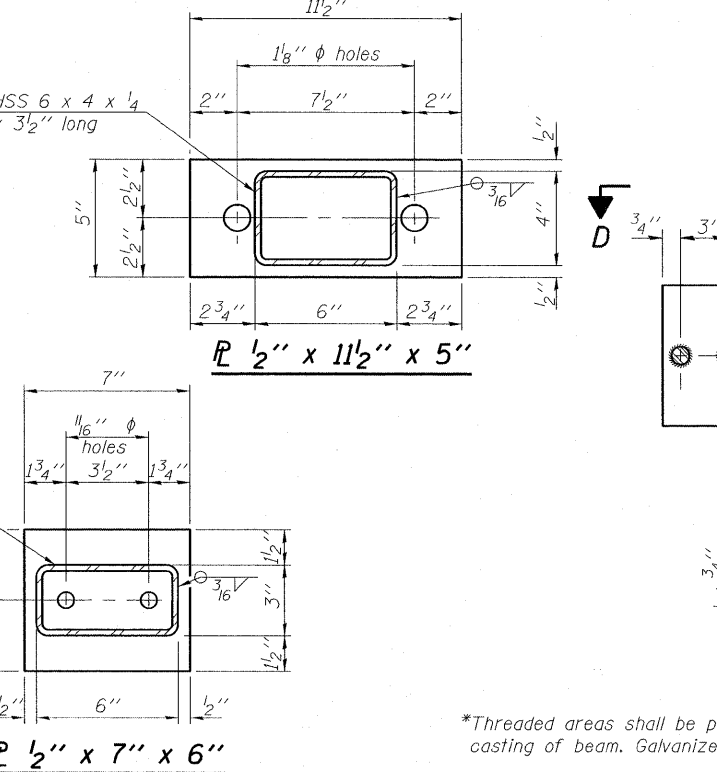
SECTION B-B



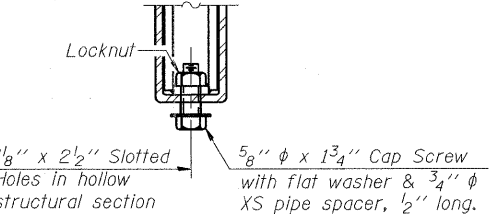
SECTION C-C



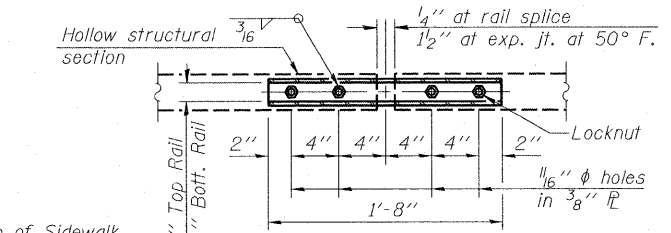
SECTION AT RAIL POST



ANCHOR DEVICE

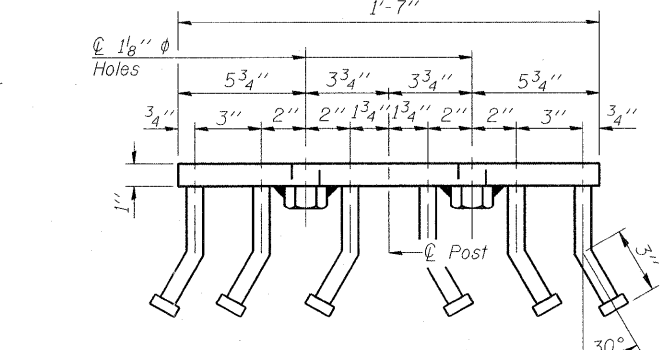


RAIL SPLICE CONNECTION
AT EXPANSION JT.

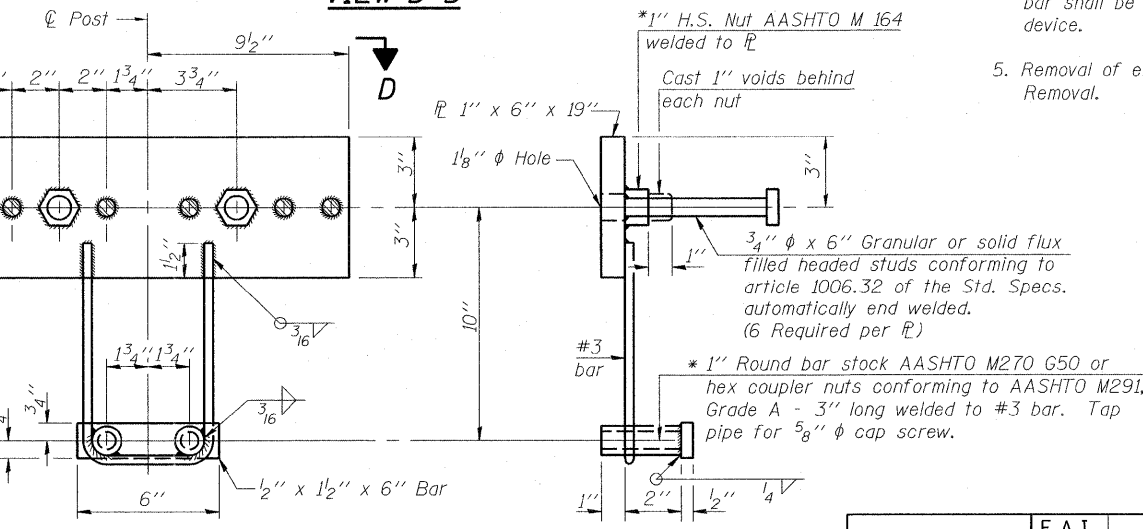


PLAN-BOTT. SPLICE TYPICAL

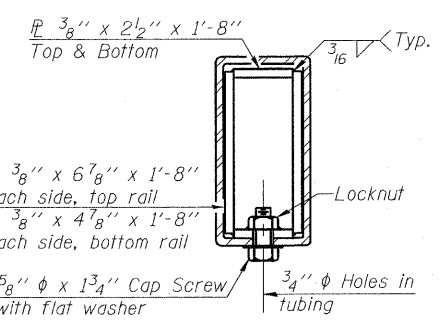
ϕ - 5/8" reduced base welded studs. Provide 4 - 5/8" washers and self-locking nuts or nuts and jam nuts for guardrail connection shown on Std. 631032



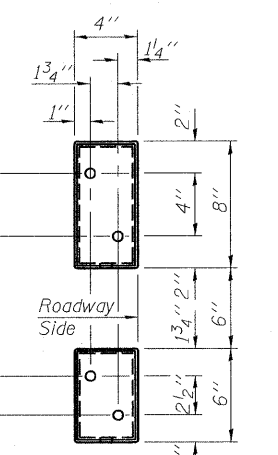
VIEW D-D



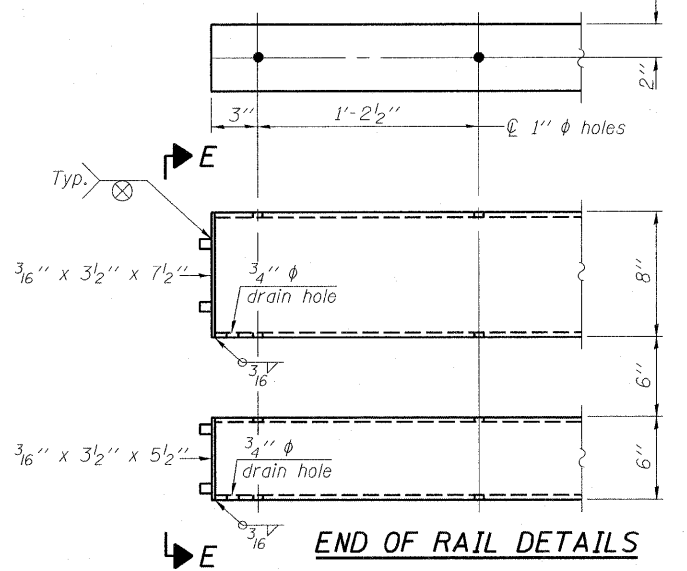
ANCHOR DEVICE



SECTION AT
RAIL SPLICE



VIEW E-E



END OF RAIL DETAILS

NOTES:

- All field drilled holes shall be coated with an approved zinc rich paint before erection.
- For multi-span bridges, sufficient 1/4" x 6" x 1'-2" galvanized steel shims shall be provided to align rail between adjacent spans. Cost included with Steel Railing, Type SM.
- Steel rail elements shall be galvanized according to Article 509.05 of the Standard Specifications.
- ** The studs of the anchor devices shall be placed below the top reinforcement bars and the outermost longitudinal reinforcement bar shall be placed directly above the studs of the rail post anchor device.
- Removal of existing traffic rail is included in cost of Concrete Removal.

BILL OF MATERIAL

Item	Unit	Quantity
Steel Railing, Type SM	Foot	341

STEEL RAILING, TYPE SM
STRUCTURE NO. 082-0099

SHEET NO.	F.A.I. RTE.	SECTION	COUNTY	TOTAL SHEETS	SHEET NO.
S7	64	82-1-3HB, 82-2N, 82-1-12RS	ST. CLAIR	352	245
S20 SHEETS	F.A.U. 9166 / F.A.U. 9180	CONTRACT NO. 76C51			
	FED. ROAD DIST. NO.	ILLINOIS	FED. AID PROJECT		

DESIGNED - DEV
CHECKED - EJO
DRAWN - DEV
CHECKED - EJO

*Threaded areas shall be plugged or blocked off during casting of beam. Galvanized after fabrication.