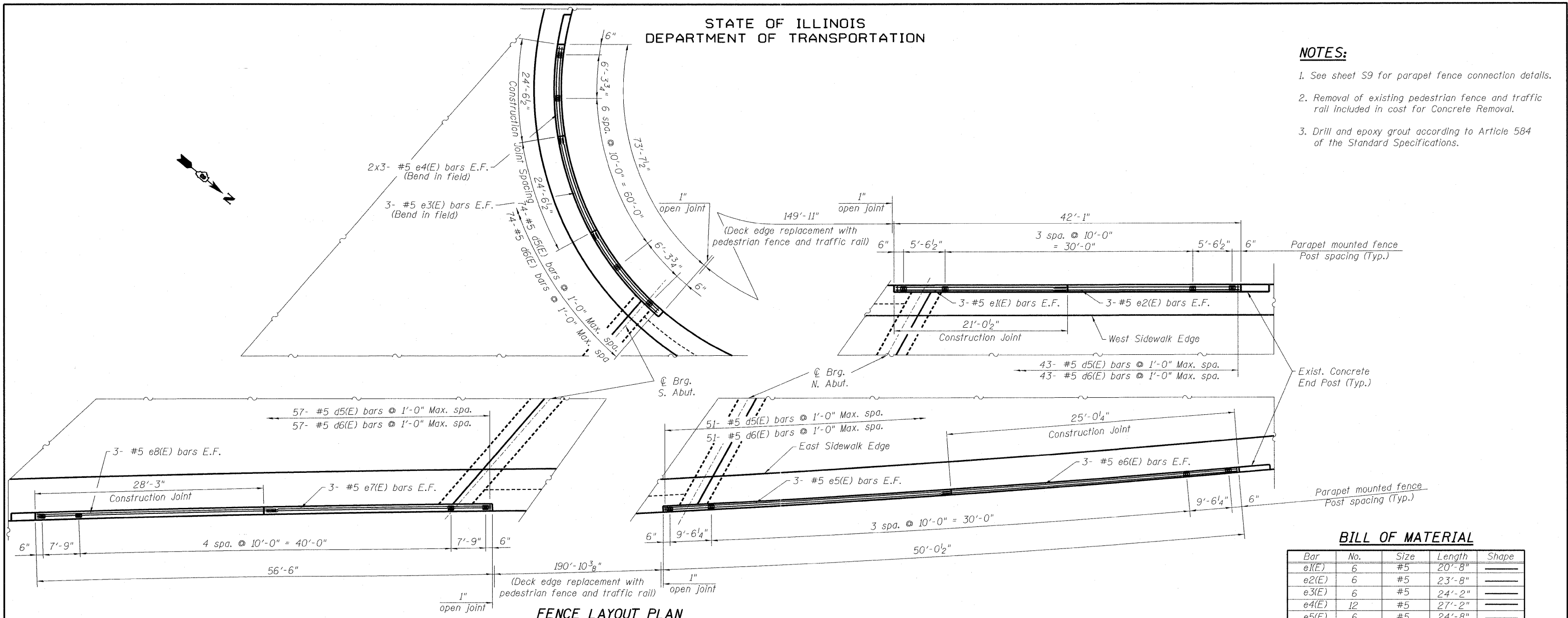


STATE OF ILLINOIS
DEPARTMENT OF TRANSPORTATION

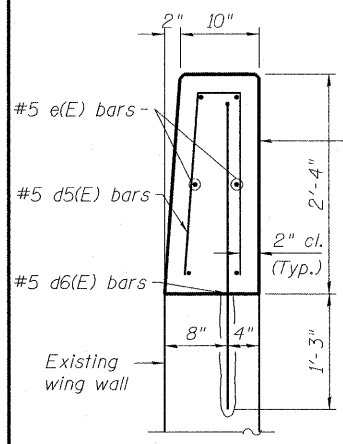
NOTES:

1. See sheet S9 for parapet fence connection details.
2. Removal of existing pedestrian fence and traffic rail included in cost for Concrete Removal.
3. Drill and epoxy grout according to Article 584 of the Standard Specifications.

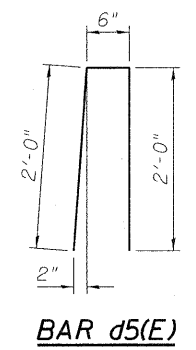
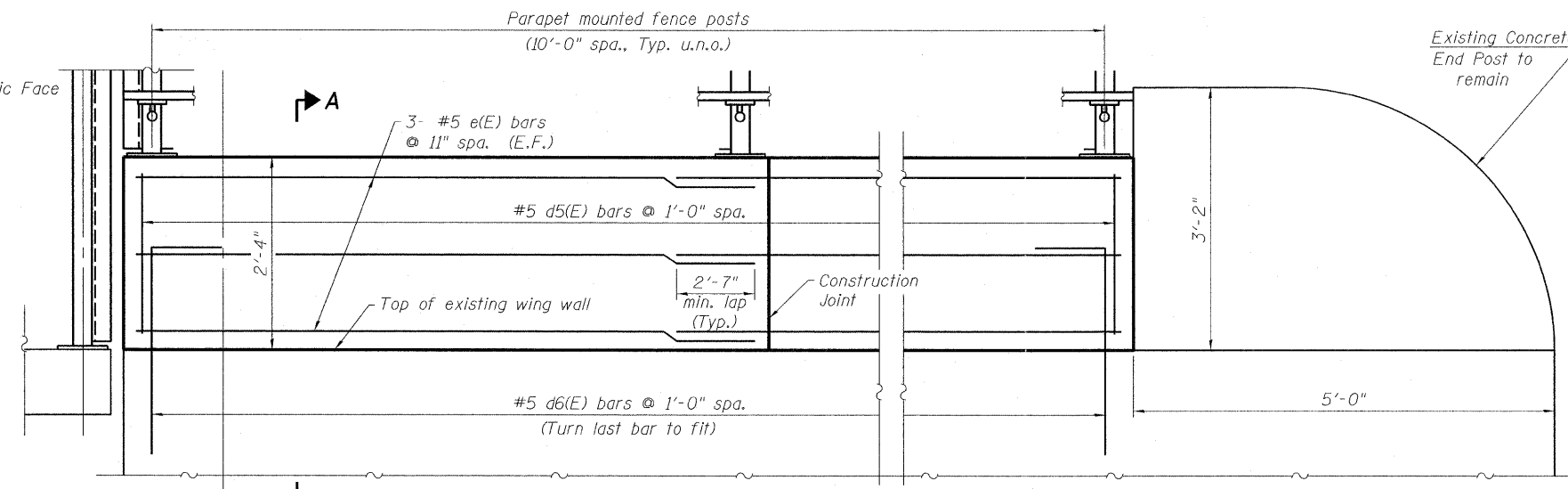


BILL OF MATERIAL

Bar	No.	Size	Length	Shape
e1(E)	6	#5	20'-8"	—
e2(E)	6	#5	23'-8"	—
e3(E)	6	#5	24'-2"	—
e4(E)	12	#5	27'-2"	—
e5(E)	6	#5	24'-8"	—
e6(E)	6	#5	27'-5"	—
e7(E)	6	#5	27'-11"	—
e8(E)	6	#5	30'-10"	—
d5(E)	225	#5	4'-6"	U
d6(E)	225	#5	4'-1"	U
Item	Unit	Quantity		
Concrete Superstructure	Cu. Yd.	18		
Protective Coat	Sq. Yd.	79		
Reinforcement Bars, Epoxy Coated	Pound	3,480		



DESIGNED - DEV
CHECKED - EJO
DRAWN - DEV
CHECKED - EJO



APPROACH PARAPET DETAILS
STRUCTURE NO. 082-0099

SHEET NO. S10 S20 SHEETS	F.A.I. RTE.	SECTION	COUNTY	TOTAL SHEETS	SHEET NO.
	64	82-1-3HB, 82-2N, 82-1-12RS	ST. CLAIR	352	248
	F.A.U. 9166 / F.A.U. 9180		CONTRACT NO. 76C51		
FED. ROAD DIST. NO.		ILLINOIS	FED. AID PROJECT		