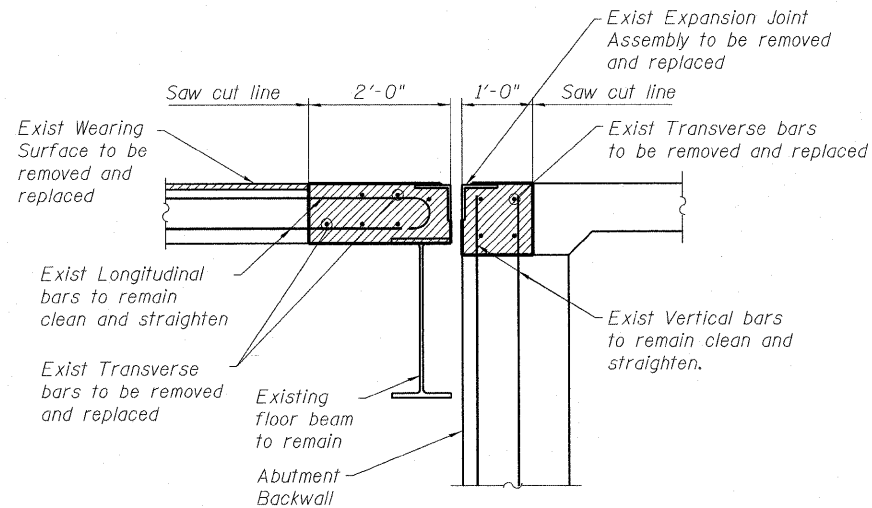
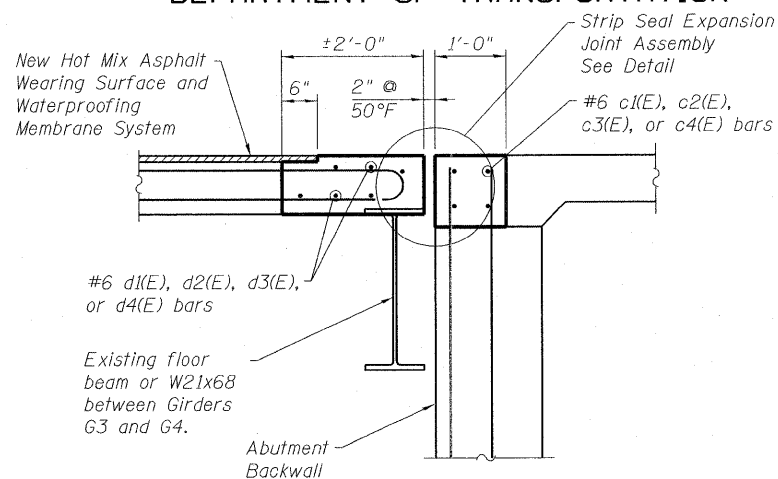


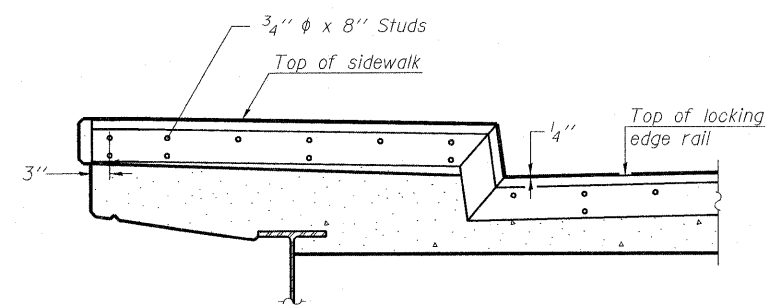
STATE OF ILLINOIS  
DEPARTMENT OF TRANSPORTATION



**REMOVAL DETAIL  
SECTION B-B**



**REPLACEMENT DETAIL  
SECTION B-B**

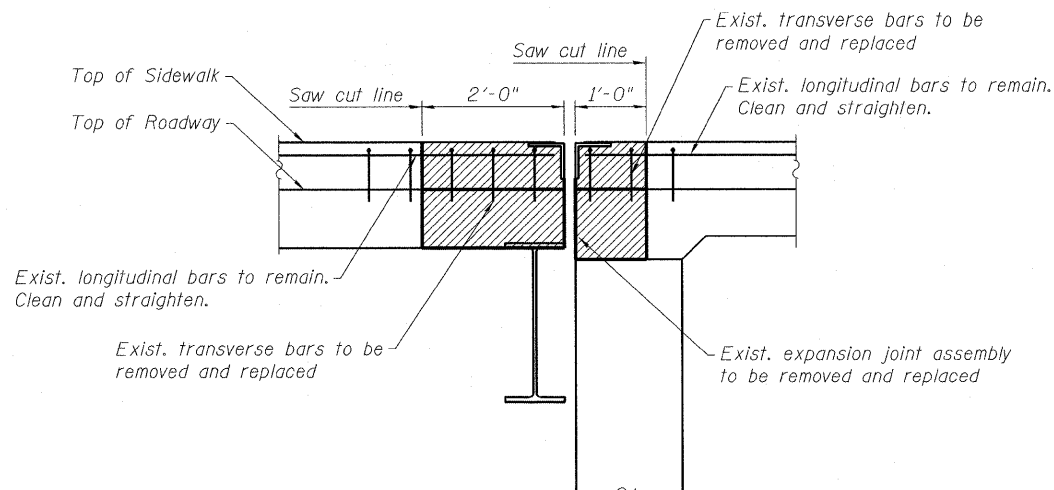


**EXPANSION JOINT AT SIDEWALK**

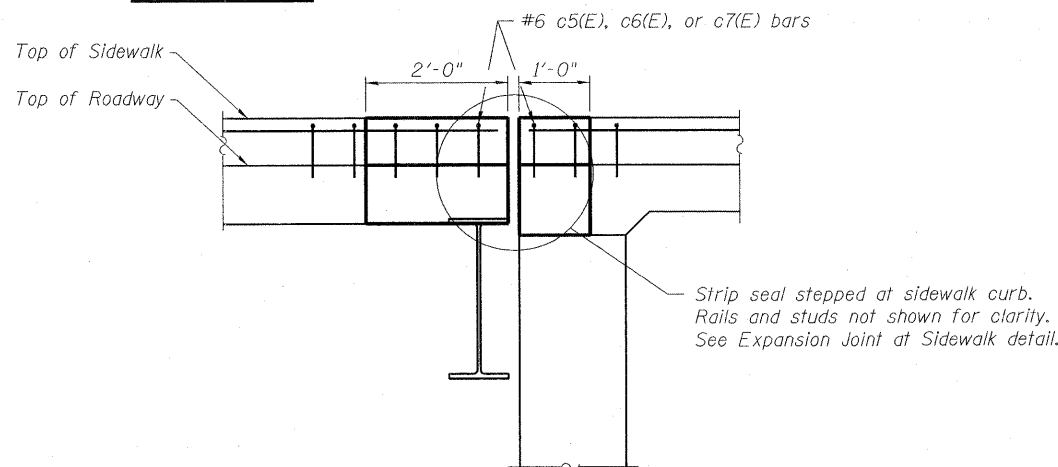
Shorter plates with a single row of studs at 12" cts. may be necessary if shallower than 9". See manufacturer's recommendation.

**NOTES:**

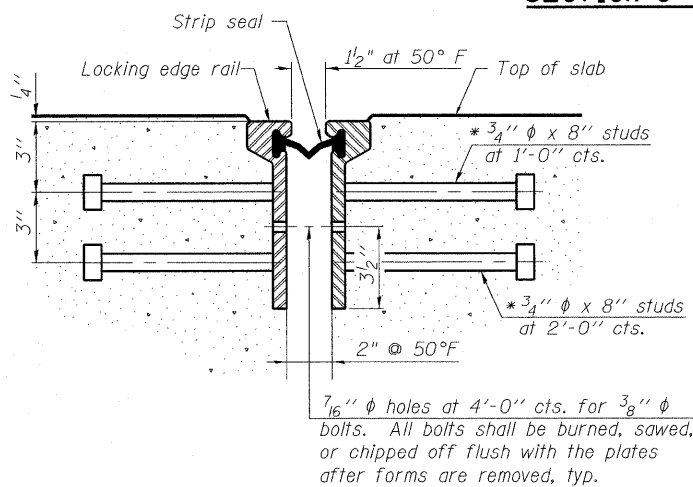
1. The strip seal shall be made continuous and shall have a minimum thickness of 1/4". The configuration of the strip seal shall match the configuration of the Locking Edge Rails. Open or "webbed" strip seal gland configurations are not permitted. The gland shall be sized for a maximum rated movement of 4 inches.
2. The Locking Edge Rails depicted are conceptual only, except for the minimum dimensions shown. The actual configuration of the Locking Edge Rails and matching strip seal may vary from manufacturer to manufacturer. Flanged edge rails will not be allowed. Locking Edge Rails may be spliced at slope discontinuities.
3. The manufacturer's recommended installation methods shall be followed.
4. The joint opening and deck dimensions detailed on the superstructure are based on a rolled rail expansion joint. If the Contractor elects to use the welded rail expansion joint, the opening and deck dimensions shall be modified according to the dimensions detailed on this sheet. Required modifications shall be made at no additional cost to the State.
5. All steel components shall be galvanized after fabrication according to Article 520.03 of the Standard Specifications.
6. Maximum space between rail segments at stage lines shall be 3/16", sealed with a suitable sealant.



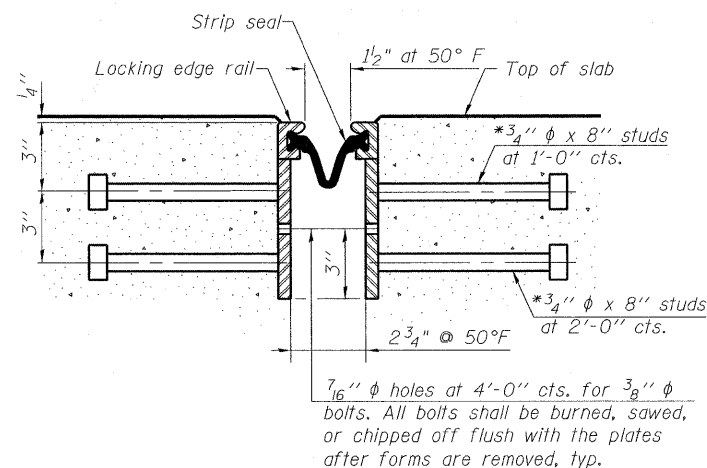
**SIDEWALK REMOVAL DETAIL  
SECTION C-C**



**SIDEWALK REPLACEMENT DETAIL  
SECTION C-C**



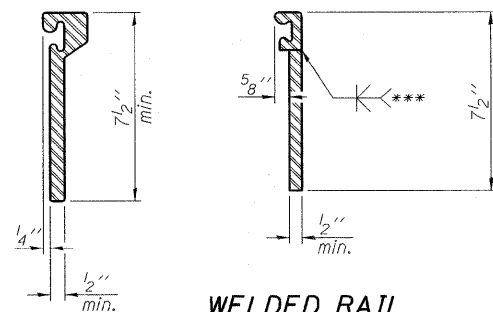
**SECTION THRU  
ROLLED RAIL JOINT**



**SECTION THRU  
WELDED RAIL JOINT**

\* Granular or solid flux filled headed studs conforming to Article 1006.32 of the Std. Specs., automatically end welded.

**ROLLED  
EXTRUDED RAIL**



**WELDED RAIL**

**LOCKING EDGE  
RAIL SPLICE**

The inside of the locking edge rail groove shall be free of weld residue.  
Rolled rail shown, welded rail similar.

**LOCKING EDGE RAILS**

**EXPANSION JOINT DETAILS  
STRUCTURE NO. 082-0099**

DESIGNED - DEV
CHECKED - EJO
DRAWN - DEV
CHECKED - EJO

**STRIP SEAL EXPANSION JOINT ASSEMBLY**

SHEET NO. S13 S20 SHEETS	F.A.I. RTE.	SECTION	COUNTY	TOTAL SHEETS	SHEET NO.
	64	82-1-3HB, 82-2N, 82-1-12RS	ST. CLAIR	352	251
	F.A.U. 9166 / F.A.U. 9180		CONTRACT NO. 76C51		
FED. ROAD DIST. NO.		ILLINOIS	FED. AID PROJECT		