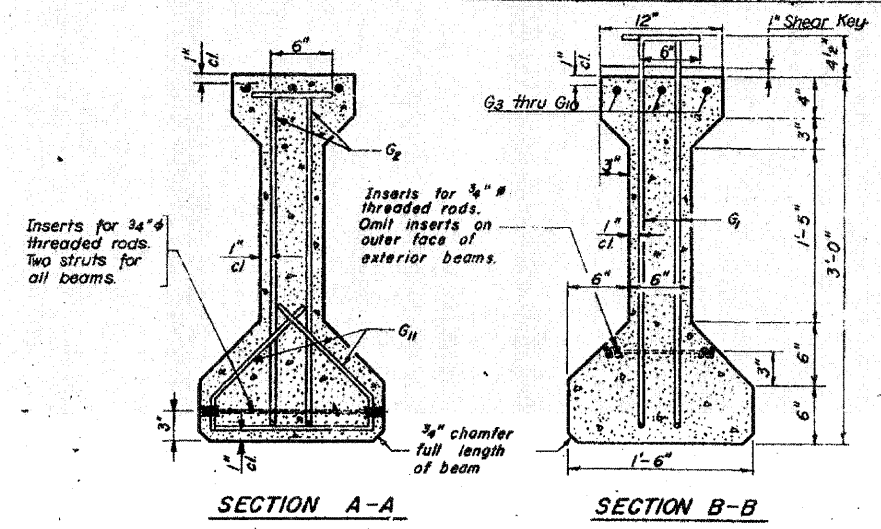
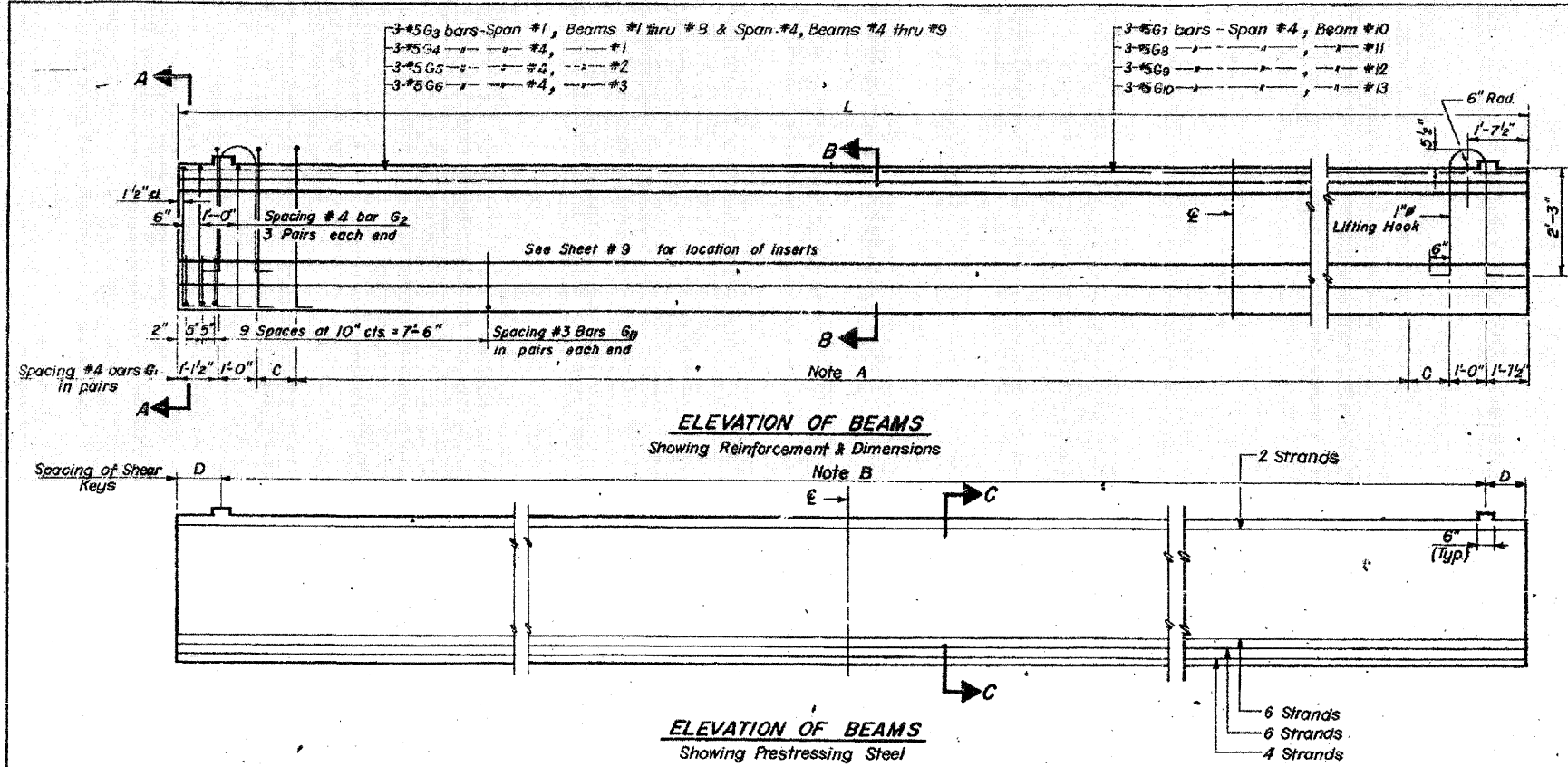
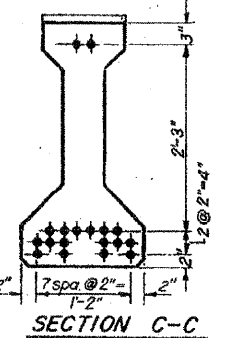


FOR INFORMATION ONLY

ROUTE NO.	SECTION	COUNTY	TOTAL SHEETS	SHEET NO.
F.A.I. - 64	82-1HB	ST. CLAIR	110	69
FED. ROAD DIV. NO. 4		ILLINOIS PROJECT		



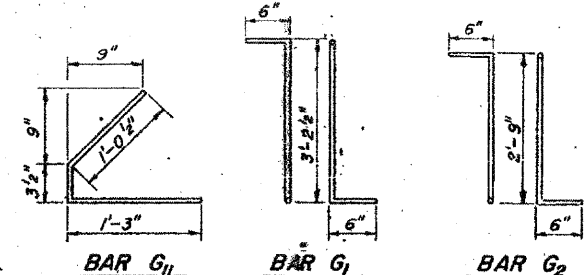
NOTE:
An alternate prestressing strand pattern using Extra High Strength Strand 270 ksi is permitted. See Special Provision.



Span No.	Beam No.	Dimensions			Note A	Note B	No. of Beams
		L	C	D			
1	1 thru 8	34'-8"	11 1/2"	10"	19 @ 1'-6" = 28'-6"	11 @ 3'-0" = 33'-0"	14
4	4 thru 9						
4	1	34'-3 1/4"	1'-6 1/2"	7 5/8"	18 @ 1'-6" = 27'-0"	11 @ 3'-0" = 33'-0"	1
	2	33'-4 7/8"	1'-0 5/8"	7 1/8"	18 @ 1'-6" = 27'-0"	11 @ 2'-11" = 32'-1"	1
	3	33'-6 1/2"	1'-1 3/4"	7 3/4"	18 @ 1'-6" = 27'-0"	11 @ 2'-11" = 32'-1"	1
	10	36'-0 3/4"	10 7/8"	6 3/8"	20 @ 1'-6" = 30'-0"	12 @ 2'-11" = 35'-0"	1
	11	38'-6 3/8"	1'-4 1/8"	10 3/16"	21 @ 1'-6" = 31'-6"	13 @ 2'-10" = 36'-10"	1
	12	41'-6 1/4"	1'-4 5/8"	11 1/8"	23 @ 1'-6" = 34'-6"	14 @ 2'-10" = 39'-8"	1
13	44'-11 1/8"	1'-7 1/8"	7 1/8"	25 @ 1'-6" = 37'-6"	15 @ 2'-11" = 43'-9"	1	

BAR LIST

Bar	No.	Size	Length	Shape
G ₁	1028	#4	4-2 1/2	TL
G ₂	252	#4	3-9	TL
G ₃	42	#5	34-5	---
G ₄	3	#5	34-0	---
G ₅	3	#5	33-2	---
G ₆	3	#5	33-3	---
G ₇	3	#6	35-9	---
G ₈	3	#6	38-3	---
G ₉	3	#6	41-3	---
G ₁₀	3	#5	44-8	---
G ₁₁	1008	#3	2-7	L



NOTES

All inserts and threaded rods for inserts, reinforcing and Prestressing Steel, and other items which are cast into the Precast Concrete I-Beams shall be included in the contract unit price per linear foot of "Furnishing And Erecting Precast Prestressed Concrete I-Beams, 36 In." See Specifications for additional information regarding materials, Prestressing equipment, construction and handling methods and other requirements for Precast Prestressed Concrete I-Beams. Prestressing Steel shall have a nominal diameter of 1/8".

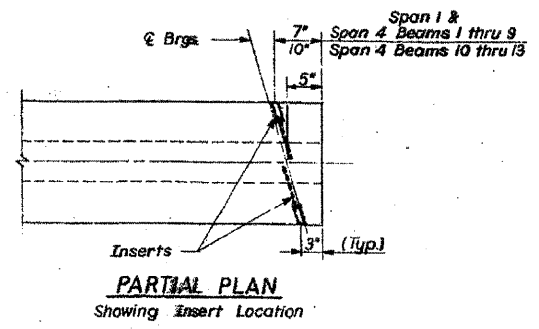
Inserts for 3/4" threaded rods are to be two strut, coil type for interior I-Beams and single coil, flared loop type for exterior I-Beams.

Steel for lifting hooks shall be non-deformed bars of structural or intermediate grade billet steel.

End of beams to be encased with cast in place concrete shall not be coated with asphalt paint.

BILL OF MATERIAL

Item	Unit	Total
Furnishing & Erecting Precast Prestressed Concrete I-Beams, 36"	Lin Ft	748



DESIGNED BY: H.N.
DRAWN BY: B.B.
CHECKED BY: H.N.

STATE OF ILLINOIS
DIVISION OF HIGHWAYS
PRESTRESSED BEAM DETAILS
F.A. ROUTE 12 (9TH STREET)
OVER F.A.I. ROUTE 64
STATION 55+62.20
F.A.I. RT. 64 ST. CLAIR COUNTY SECTION 82-1HB
H. W. LOCHNER, INC.
ENGINEERS
CHICAGO, ILLINOIS

SHEET NO. 11 of 18