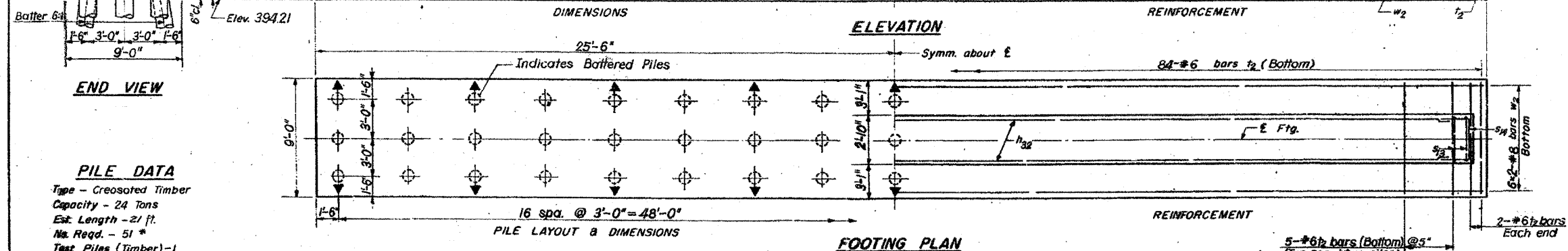
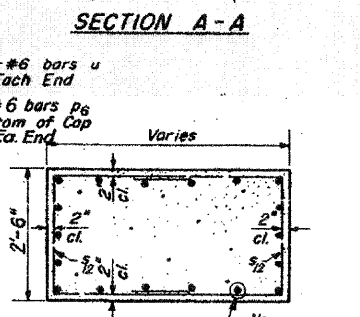
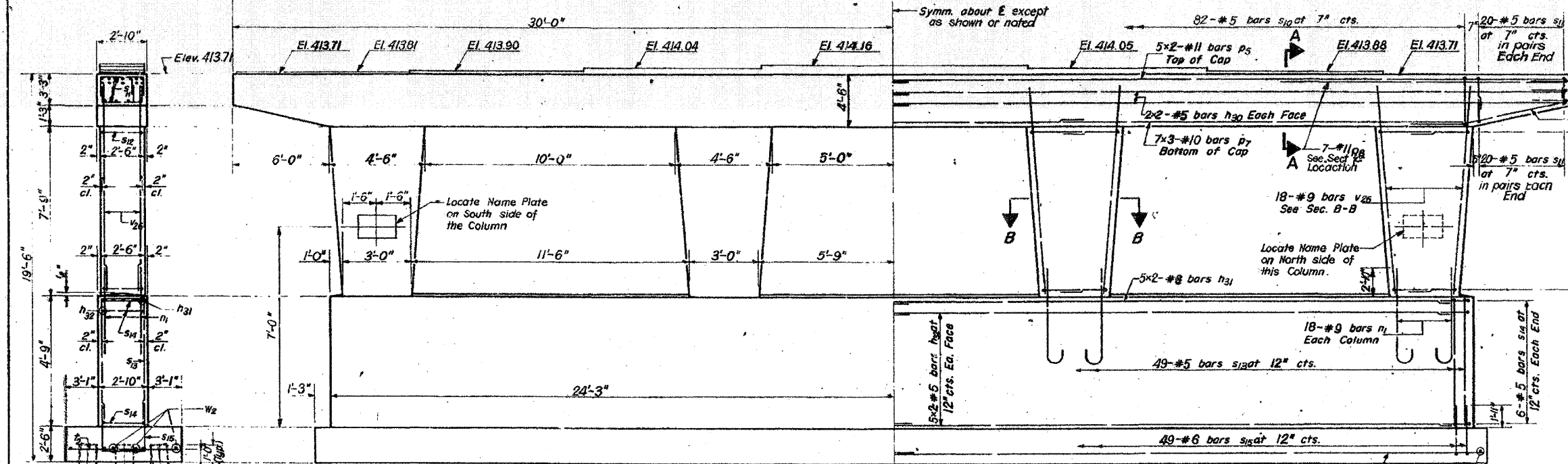
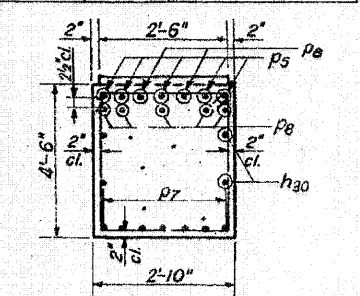
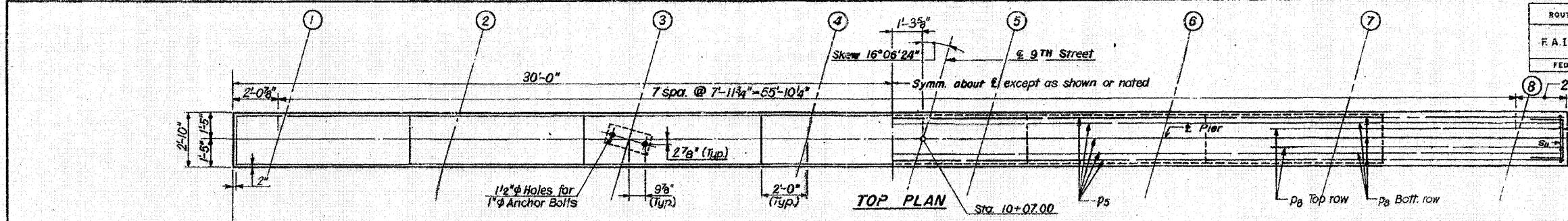


FOR INFORMATION ONLY

ROUTE NO.	SECTION	COUNTY	TOTAL SHEETS	SHEET NO.
F.A.I. - 64	82-1HB	ST. CLAIR	110	74
FED. ROAD DIV. NO. 4		ILLINOIS PROJECT		

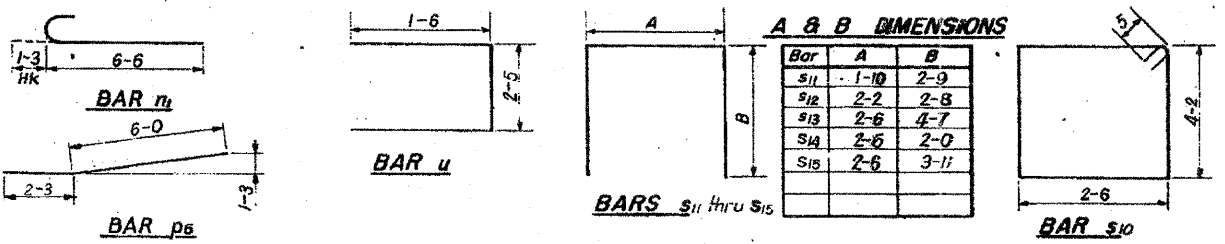


BILL OF MATERIAL

Bar	No.	Size	Length	Shape
h30	8	#5	30-6	—
h31	10	#8	25-1	—
h32	20	#5	24-9	—
n1	72	#9	7-9	—
p5	10	#11	31-3	—
p6	8	#6	8-3	—
p7	21	#10	17-0	—
p8	14	#11	15-4	—
s10	82	#5	14-2	□
s11	90	#5	7-4	□
s12	64	#5	7-6	□
s13	49	#5	11-8	□
s14	12	#5	6-6	□
s15	49	#6	10-4	□
t2	84	#6	8-6	—
u	6	#6	5-5	□
v26	72	#9	11-9	—
w2	12	#8	26-4	—
Class X Concrete		Cu. Yds.	104.7	
Reinforcement Bars		Lbs.	16,370	
Creosoted Timber Piles		Lin. Ft.	1,071	
Test Piles (Timber)		Each	1	
Name Plate		Each	2	

PILE DATA
 Type - Creosoted Timber
 Capacity - 24 Tons
 Est. Length - 21 ft.
 No. Req'd. - 51 *
 Test Piles (Timber) - 1
 * Does not include Test Pile

DESIGNED BY: H.N.
 DRAWN BY: B.B.
 CHECKED BY: H.N.



Notes:
 Space reinforcement in cap to miss anchor bolts.
 Min. bar laps = 24 dia. unless otherwise noted.
 All edges shall have standard 3/4" chamfers except as noted.
 Pour steps monolithically with cap.

Rev. 2-8-69 Cla. X Con. from 109.3 Cu. Yds. to 124.7 Cu. Yds., Rent. from 18,040 to 16,370, S.M. Rev. 4-8-69 Creos. Timber Piles From 763 Lin. Ft. to 1071 Lin. Ft. S.M.

STATE OF ILLINOIS
 DIVISION OF HIGHWAYS
PIER
 F.A. ROUTE 12 (9TH STREET)
 OVER F.A.I. ROUTE 64
 STATION 55 + 62.20
 F.A.I. RT. 64 ST. CLAIR COUNTY SECTION 82-1HB
 H. W. LOCHNER, INC.
 ENGINEERS
 CHICAGO, ILLINOIS