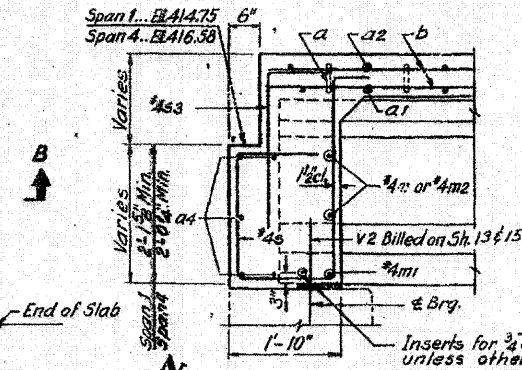
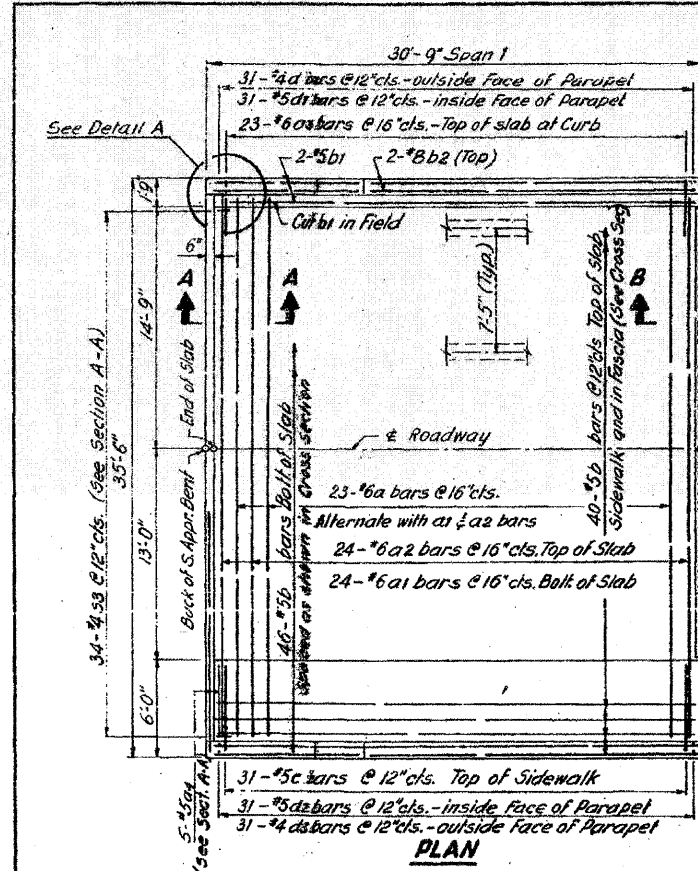
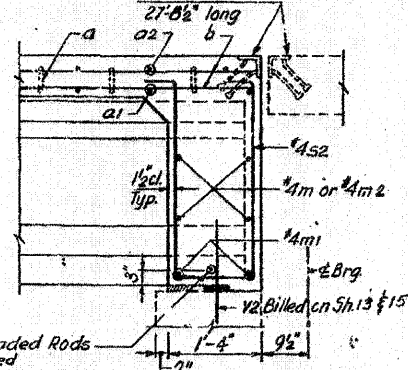


FOR INFORMATION ONLY

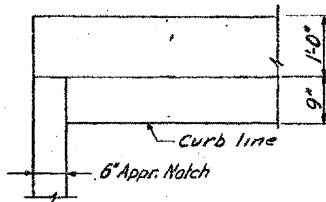
ROUTE NO.	SECTION	COUNTY	TOTAL SHEETS	SHEET NO.
F.A.I. - 64	82-IHB	ST. CLAIR	110	78
FED. ROAD DIV. NO. 4	ILLINOIS	PROJECT		



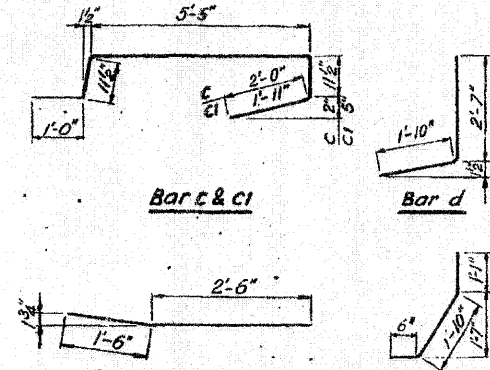
SECTION A-A



SECTION B-B



DETAIL A

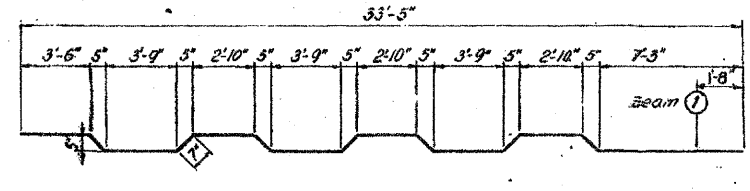


Bar c & c1

Bar d3

Bar d

Bar d1



Bar a

Bar d2

Bar d3

Bar s

Bar s2

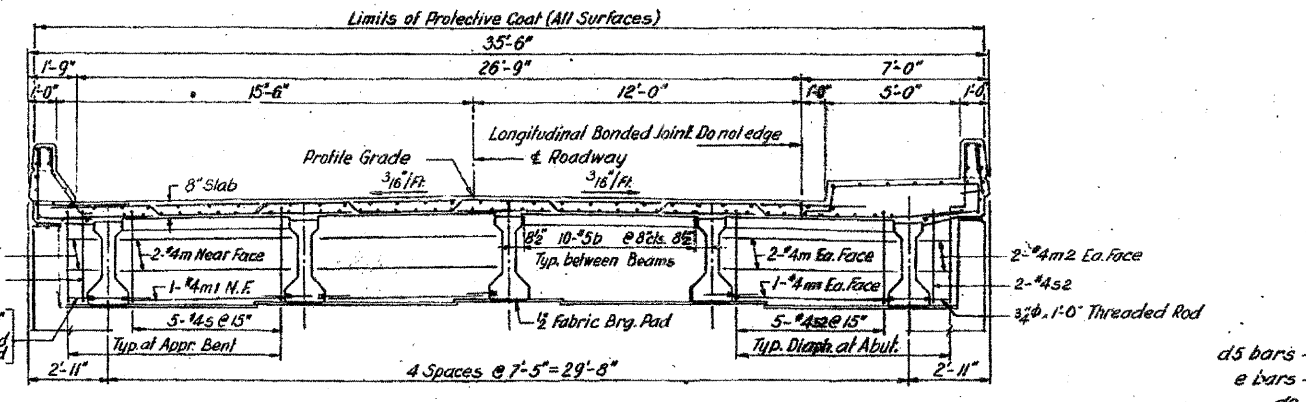
Bar s3

BILL OF MATERIAL

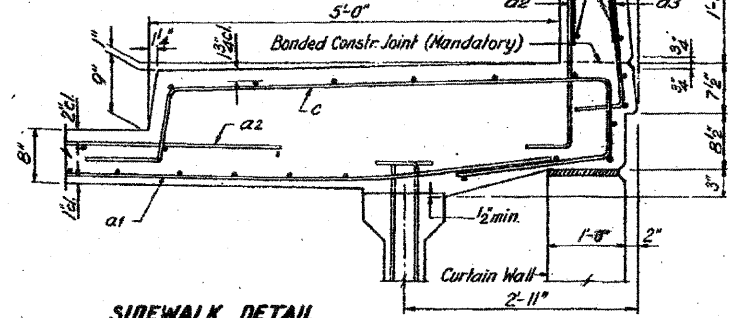
Bar No.	Size	Length	Shape
a	23 #6	34'-7"	U
a1	24 #6	33'-6"	U
a2	24 #6	30'-0"	U
a3	23 #6	4'-0"	U
a4	5 #5	32'-8"	U
b	86 #5	30'-0"	U
b1	2 #5	30'-6"	U
b2	2 #5	30'-6"	U
c	31 #5	10'-4"	U
d	31 #4	4'-5"	U
d1	31 #5	3'-5"	U
d2	31 #5	3'-4"	U
d3	31 #4	2'-6"	U
m	24 #4	6'-8"	U
m1	12 #4	5'-8"	U
m2	12 #4	1'-3"	U
s	24 #4	8'-4"	U
s2	24 #4	8'-5"	U
s3	34 #4	3'-6"	U

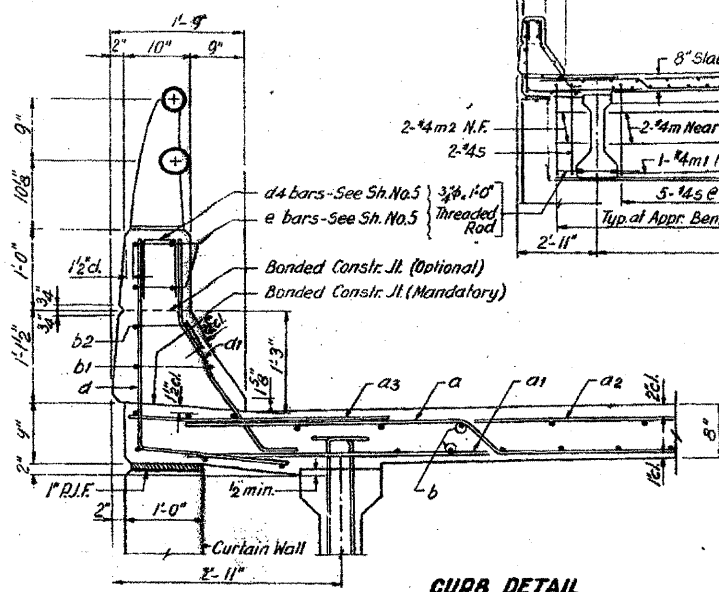
Item	Unit	Total
Reinforcement Bars	Lbs.	7,000
Class X Concrete	Cu Yds.	44.0
Protective Coat	Sq Yds.	132



CROSS SECTION



SIDEWALK DETAIL



CURB DETAIL

NOTES:  
 Bars indicated thus 2x3-#5 etc. indicate 2 lines of bars with 3 lengths per line.  
 Minimum bar laps = 24 bar diameters.  
 All edges shall have 3/4 chamfer.  
 All clearances shall be 1/2 unless shown otherwise.

NOTES:  
 The quantities of reinforcement bars and concrete in parapets and end posts are billed separately on sheet No.5 and are not included above.  
 For Expansion Guard Detail see Sh. No.3  
 All exposed edges shall have 3/4 chamfer.  
 All clearances shall be 1/2 unless shown otherwise.  
 The weight of Expansion Guards is included with structural steel on Sh. No.3

DESIGNED BY R.M.R.  
 DRAWN BY L.S.  
 CHECKED BY R.M.R.

As per 13-C9 Reinf from 1990 to 1992 S.M.

STATE OF ILLINOIS  
 DIVISION OF HIGHWAYS  
 SUPERSTRUCTURE  
 SPAN 1  
 F.A. ROUTE 12 (10TH STREET)  
 OVER F.A.I. ROUTE 64  
 STATION 58+17.87  
 F.A.I. RT. 64 ST. CLAIR CO. SECTION 82-IHB  
 H. W. LOCHNER, INC.  
 ENGINEERS  
 CHICAGO, ILLINOIS  
 SHEET 2 of 18