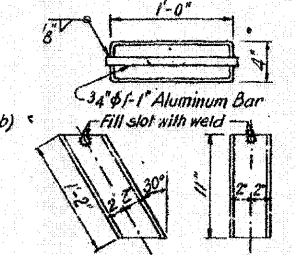
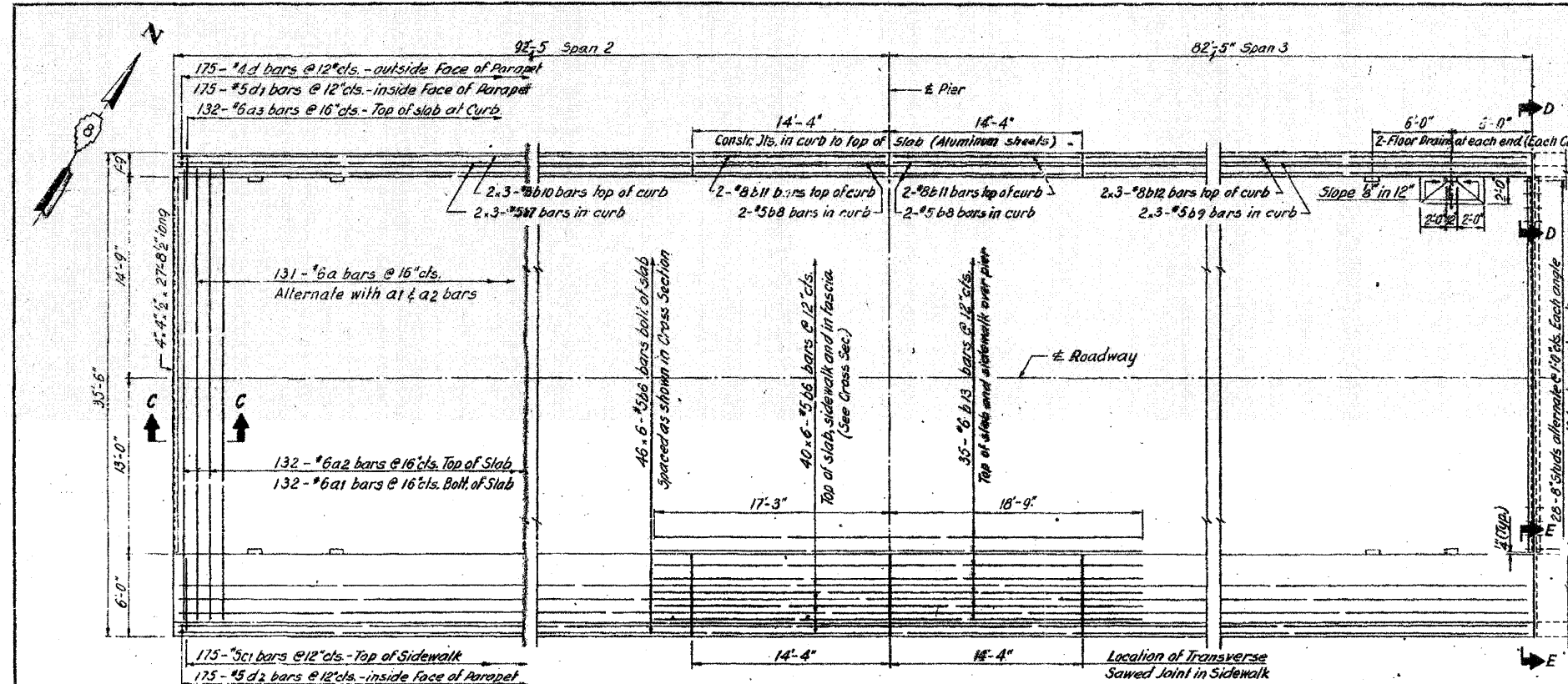
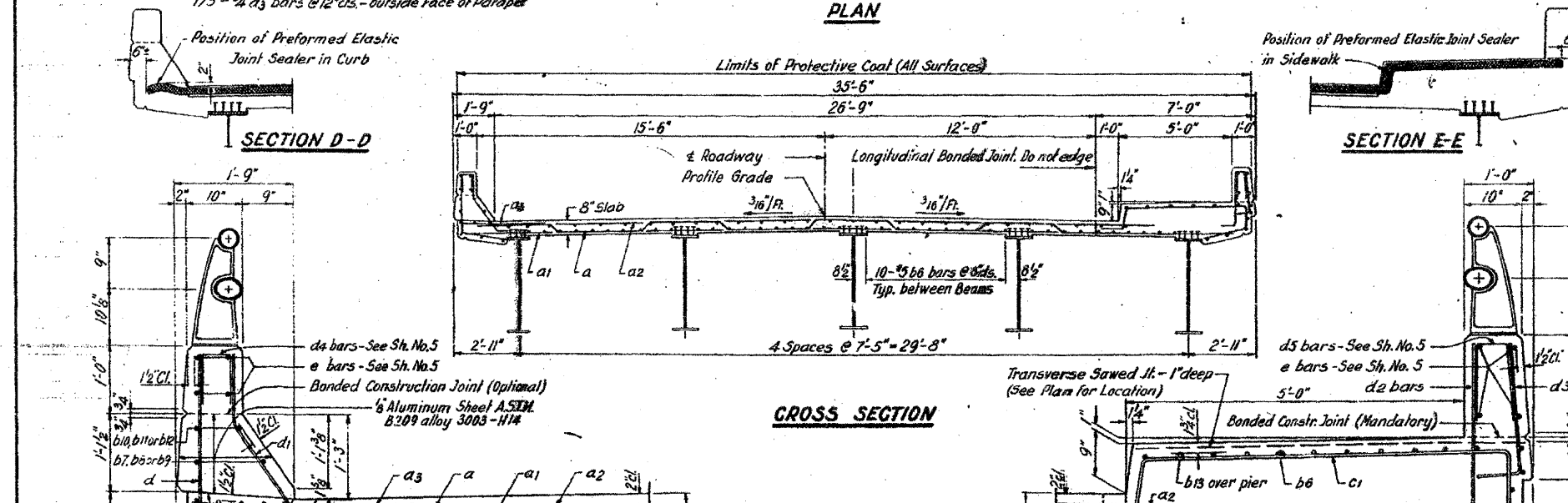
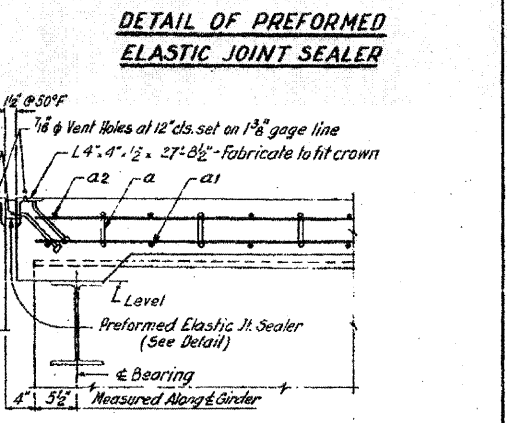


FOR INFORMATION ONLY

ROUTE NO.	SECTION	COUNTY	TOTAL SHEETS	SHEET NO.
F.A.I.-64	82-1HB	ST. CLAIR	110	79
FED. ROAD DIV. NO. 4		ILLINOIS PROJECT		



NOTE:
Vent holes bolt holes and anchor studs not shown.



BILL OF MATERIAL

Bar	No.	Size	Length	Shape
a	131	#6	34'-7"	┘
a1	132	#6	33'-6"	┘
a2	132	#6	30'-0"	┘
a3	132	#6	4'-0"	┘
b6	516	#5	30'-2"	┘
b7	6	#5	26'-9"	┘
b8	4	#5	14'-0"	┘
b9	6	#5	23'-5"	┘
b10	6	#8	27'-3"	┘
b11	4	#8	14'-0"	┘
b12	6	#8	23'-11"	┘
b13	35	#6	36'-0"	┘
c1	175	#5	10'-3"	┘

Bar	No.	Size	Length	Shape
d	175	#4	4'-5"	┘
d1	175	#5	3'-5"	┘
d2	175	#5	3'-4"	┘
d3	175	#4	2'-6"	┘

Item	Unit	Total
Reinforcement Bars	Lbs.	43,500
Structural Steel*	Lump Sum	1
Class X Concrete	Cu. Yds.	199.7
Preformed Joint Sealer	Lin. Ft.	71
Protective Coat	Sq. Yds.	761

NOTES:
 Bars indicated thus 2x3-#5 etc. indicate 2 lines of bars with 3 lengths per line. Minimum bar laps = 24 bar diameters. All edges shall have 3/8" chamfer. All clearances shall be 1/2" unless shown otherwise.

CURB DETAIL
 Cost of Aluminum Sheets shall be incidental to Class X Concrete.

SIDEWALK DETAIL

* Weight of Bearing Assemblies with lead plates and Anchor Bolts is included as Structural Steel. Weight = 5370 Lbs. The quantities of Reinforcement Bars and Class X Concrete in parapets are billed separately on Sheet No.5 and are not included above. For Bar bending diagrams see Sh. No.2

DESIGNED BY: R.M.R.
 DRAWN BY: L.S.
 CHECKED BY: R.M.R.

STATE OF ILLINOIS
 DIVISION OF HIGHWAYS
 SUPERSTRUCTURE
 SPANS 2 AND 3
 F. A. ROUTE 12 (10TH STREET)
 OVER F.A.I. ROUTE 64
 STATION 58+17.87
 F.A.I. RT. 64 ST. CLAIR CO. SECTION 82-1HB
 H. W. LOCHNER, INC. ENGINEERS CHICAGO, ILLINOIS SHEET 3 OF 18