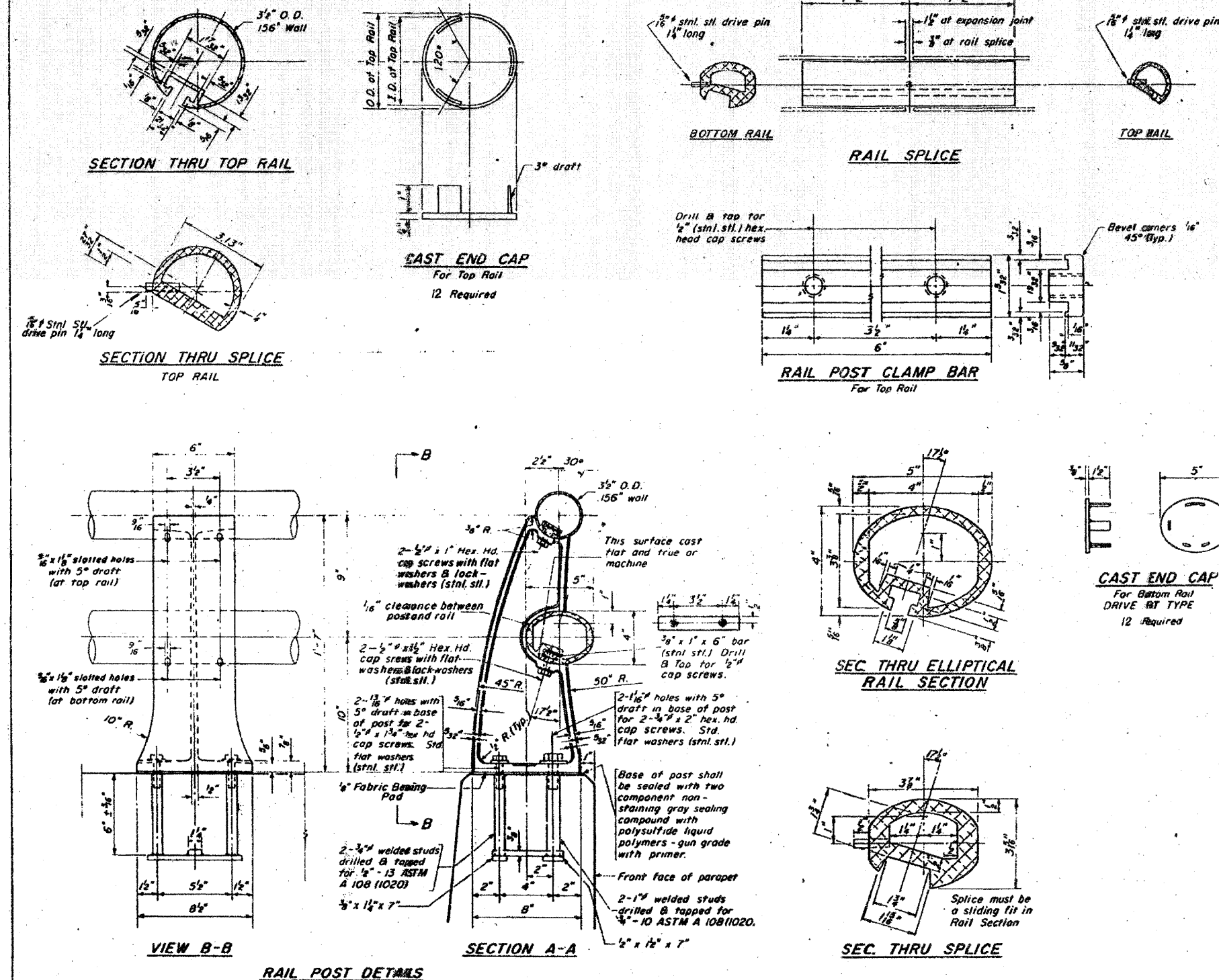


FOR INFORMATION ONLY

ROUTE NO.	SECTION	COUNTY	TOTAL SHEETS	SHEET NO.
F A I - 64	82-1HB	ST. CLAIR	110	82
FED. ROAD DIV. NO. 4	ILLINOIS	PROJECT		



**NOTES:**  
 All Posts shall be normal to parapet.  
 All Aluminum Alloy Extruded Rail shall be supplied in modular lengths of 30 feet, except at the end of bridge or over open joints in bridge deck where the rail shall be attached to a minimum of 2 posts. If the rail is on a horizontal curve of 2300 foot radius or less, the modular lengths may be reduced but shall be attached to a minimum of 2 posts.  
 All joints in rail shall be spliced per detail.

**METHOD OF MEASUREMENT:** Aluminum railing shall be measured in lineal feet. The length paid for shall be the over all length along the top longitudinal railing member thru all posts and gaps.  
**BASIS OF PAYMENT:** Aluminum railing shall be paid for at the contract unit price per lineal foot for ALUMINUM RAILING TYPE "L" measured as specified, in accordance with Section 508 of the Standard Specification except as noted.  
 Cost of rail splice, end caps, and hardware to be incidental to item ALUMINUM RAILING TYPE "L".  
 Provide 1-1/8" and 2-1/16" Aluminum Shims for 25% of the Posts. Rail elements shall be parallel to grade, high spots shall be ground and low spots shimmed.  
 Aluminum alloy rail shall conform to ASTM B221 alloy 6061-T6 or 6351-T5 with min. yield 35 ksi, min. tensile 38 ksi, and elongation of 12% in 2 inches.

**BILL OF MATERIAL**

Item	Unit	Total
Aluminum Railing Type "L"	Lin Ft.	453

STATE OF ILLINOIS  
 DIVISION OF HIGHWAYS  
**ALUMINUM RAILING TYPE L**  
 F. A. ROUTE 12 (10TH STREET)  
 OVER F. A. I. ROUTE 64  
 STATION 58+17.87  
 F. A. I. RT. 64 ST. CLAIR COUNTY SECTION 82-1HB  
 H. W. LOCHNER, INC.  
 ENGINEERS  
 CHICAGO, ILLINOIS

SHEET  
 6 OF 18