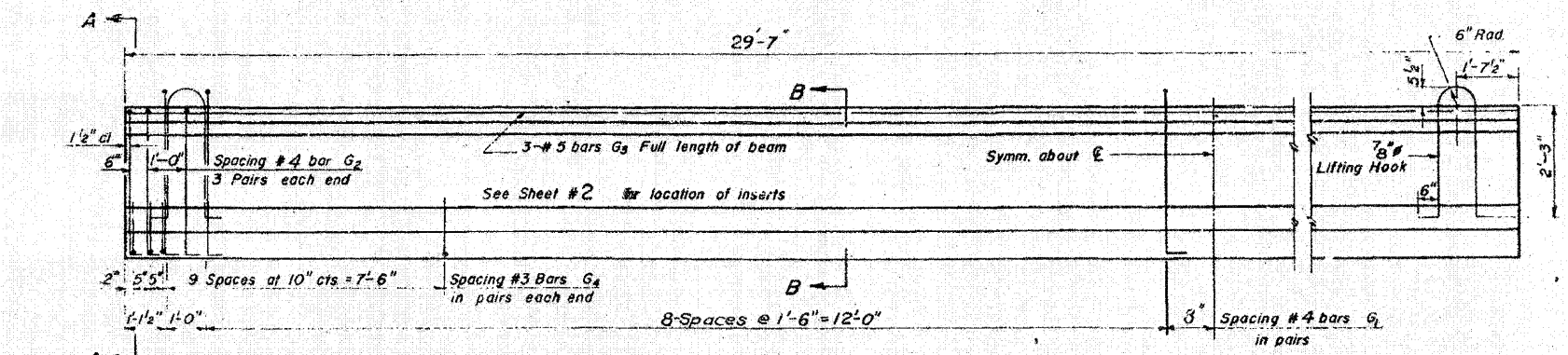
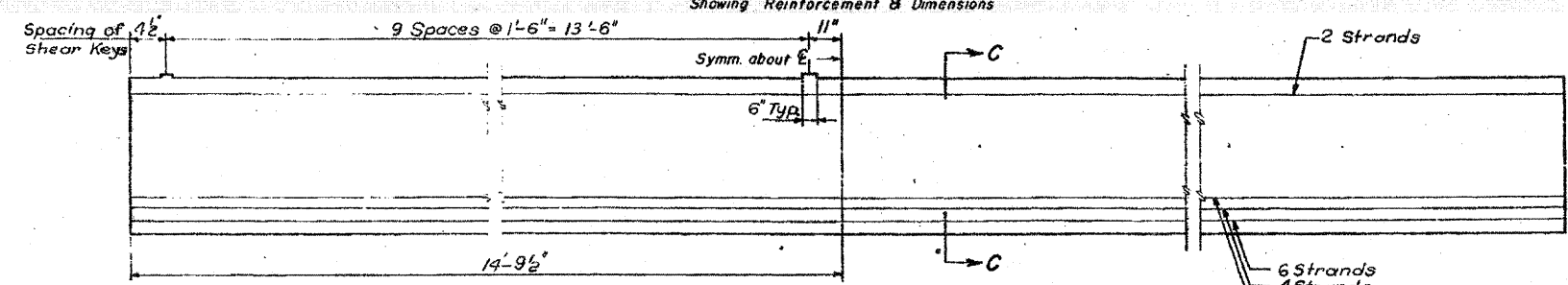


FOR INFORMATION ONLY

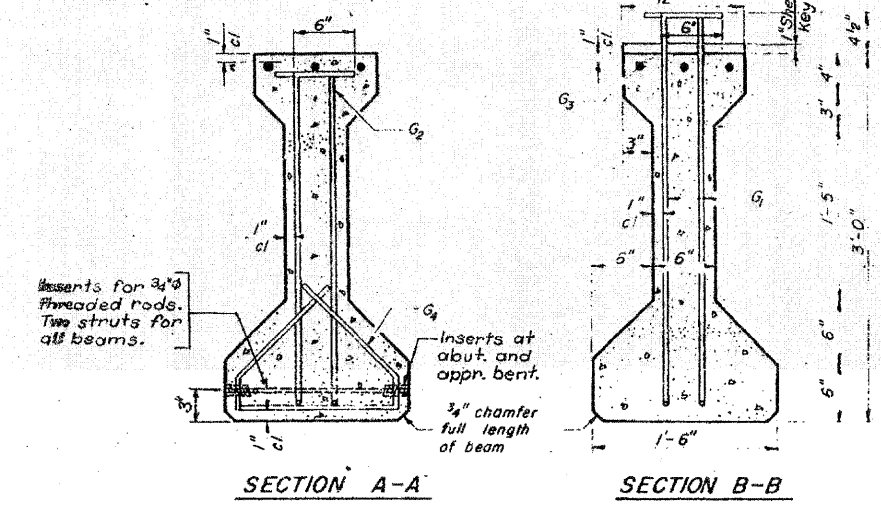
ROUTE NO.	SECTION	COUNTY	TOTAL SHEETS	SHEET NO.
F.A.I. - 64	82-1HB	ST. CLAIR	110	86
FED ROAD DIV NO 4	ILLINOIS	PROJECT		



ELEVATION OF BEAMS - SPAN I
Showing Reinforcement & Dimensions

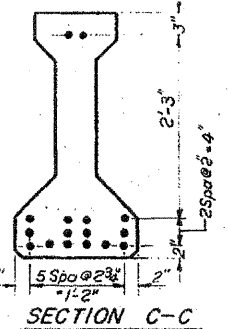


ELEVATION OF BEAMS - SPAN I
Showing Prestressing Steel

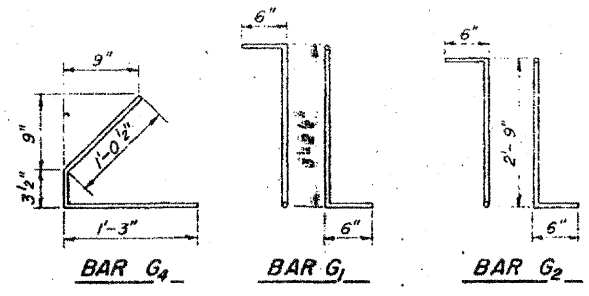


SECTION A-A

SECTION B-B



SECTION C-C



* BAR LIST

Bar	No.	Size	Length	Shape
G ₁	40	#4	4'-2 1/2"	L
G ₂	12	#4	3'-9"	L
G ₃	3	#5	29'-5"	—
G ₄	48	#3	2'-7"	L

* For one beam only

BILL OF MATERIAL

Item	Unit	Total
Furnishing & Erecting Precast Prestressed Concrete I-Beams, 36"	Lin. Ft.	148

NOTES

All inserts and threaded rods for inserts, reinforcing and Prestressing Steel, and other items which are cast into the Precast Concrete I-Beams shall be included in the contract unit price per linear foot of "Furnishing And Erecting Precast Prestressed Concrete I-Beams, 36 In." See Standard Specifications for additional information regarding materials, Prestressing equipment, construction and handling methods and other requirements for Precast Prestressed Concrete I-Beams. Prestressing Steel shall have a nominal diameter of 7/16". Inserts for 3/4" threaded rods are to be two strut, coil type. Steel for lifting hooks shall be non-deformed bars of structural or intermediate grade billet steel. End of beams to be encased with Cast in Place Concrete shall not be coated with asphalt paint.

DESIGNED BY: S.F.
DRAWN BY: J.S.
CHECKED BY: S.F.

STATE OF ILLINOIS
DIVISION OF HIGHWAYS
PRESTRESSED BEAM DETAILS
SPAN I
F.A. ROUTE 12 (10TH STREET)
OVER F.A.I. ROUTE 64
STATION 58+17.87
F.A.I. RT. 64 ST. CLAIR CO. SECTION 82-1HB
H. W. LOCHNER, INC.
ENGINEERS
CHICAGO, ILLINOIS

SHEET
9 of 18