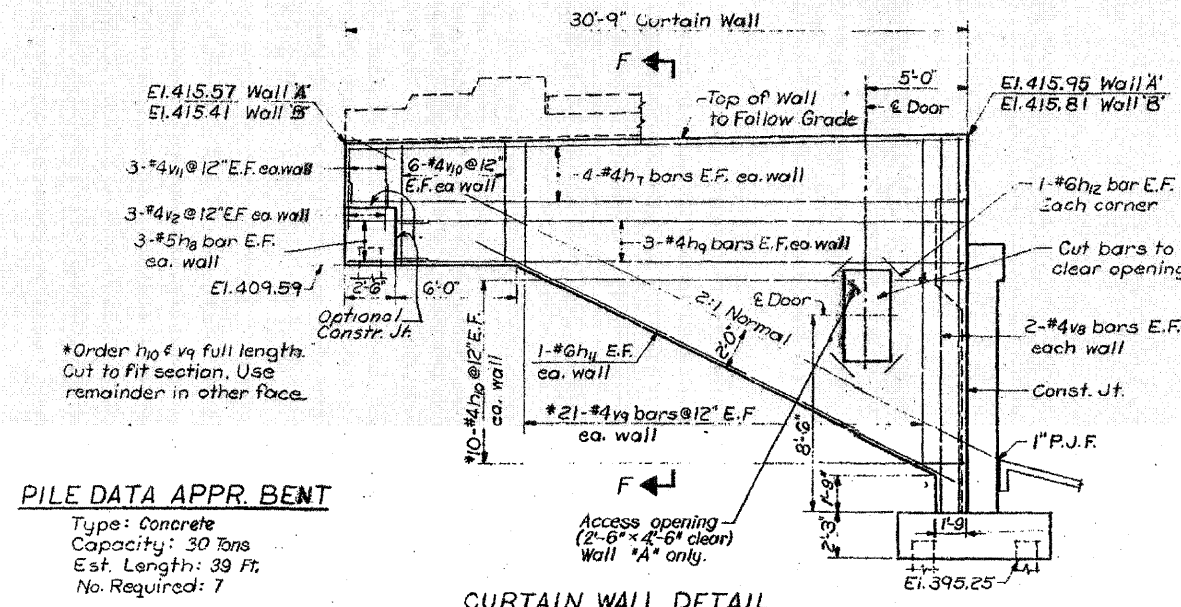


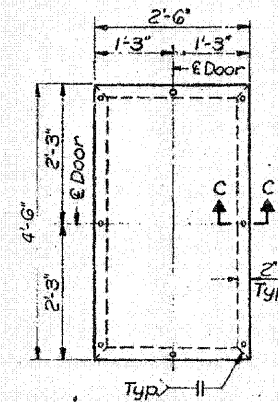
FOR INFORMATION ONLY

ROUTE NO.	SECTION	COUNTY	TOTAL SHEETS	SHEET NO.
F.A.I. - 64	82-1HB	ST. CLAIR	110	90
FED. ROAD DIV. NO. 4		ILLINOIS PROJECT		

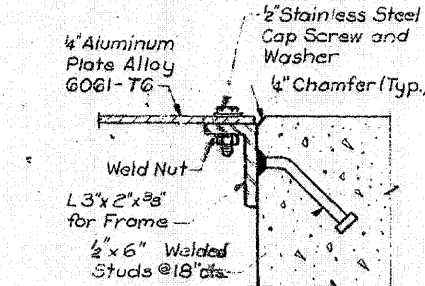


**PILE DATA APPR. BENT**  
 Type: Concrete  
 Capacity: 30 Tons  
 Est. Length: 39 Ft.  
 No. Required: 7

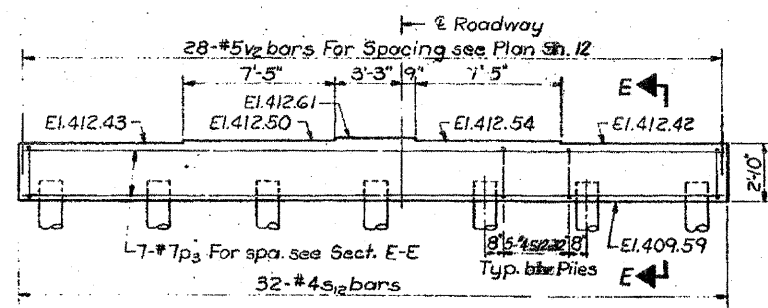
**CURTAIN WALL DETAIL**



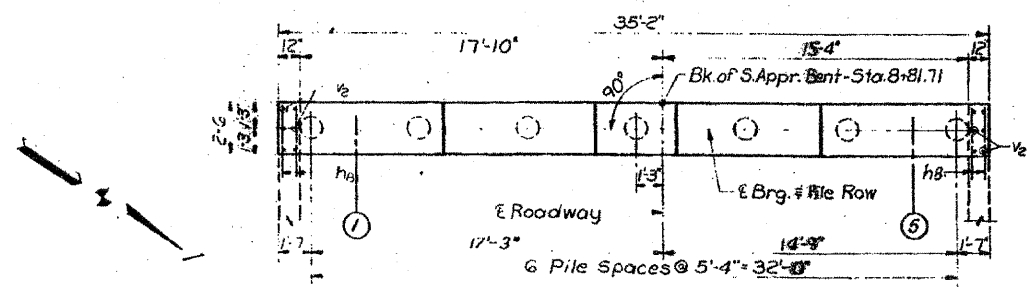
**DOOR ELEVATION**  
 (Cast of Door and Door Frame incidental to Class X Concrete)  
 2 Required



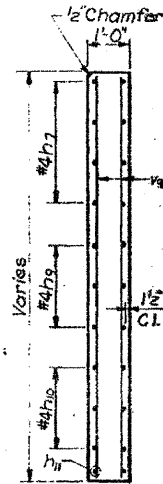
**SECTION C-C**



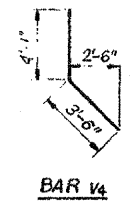
**ELEVATION**



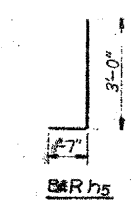
**PLAN**



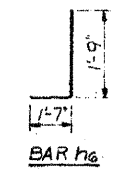
**SECTION F-F**



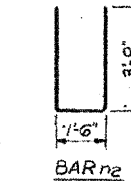
**BAR V4**



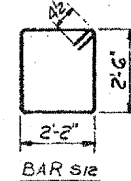
**BAR H5**



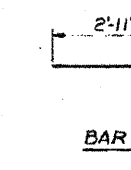
**BAR H6**



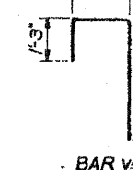
**BAR H2**



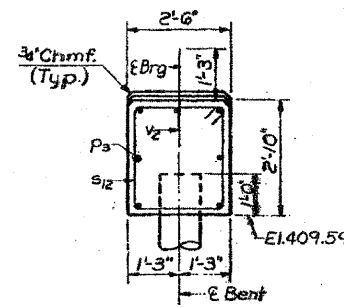
**BAR S12**



**BAR V5**



**BAR V3**



**SECTION E-E**

BILL OF MATERIAL				
Bar	No.	Size	Length	Shape
h4	22	#5	34'-10"	
h5	28	#5	4'-7"	L
h6	28	#5	3'-4"	L
h7	16	#4	30'-5"	
h8	12	#5	3'-7"	
h9	12	#4	27'-11"	
h10	20	#4	23'-9"	
h11	4	#6	25'-0"	
h12	8	#6	3'-0"	
h13	13	#5	32'-10"	
n2	36	#6	9'-0"	
Pa	7	#7	34'-10"	
s12	32	#4	10'-1"	□
t2	52	#7	7'-2"	
v2	68	#5	2'-6"	
v3	34	#5	6'-0"	□
v4	34	#5	7'-7"	□
v5	36	#5	4'-4"	□
v6	36	#5	12'-7"	
v7	36	#5	11'-0"	
v8	8	#4	18'-1"	
v9	42	#4	21'-3"	
v10	24	#4	5'-7"	
v11	12	#4	2'-9"	
w2	12	#5	20'-0"	
Item	Unit	Quantity		
Class X Concrete	Cu. Yds.	95.5		
Reinforcement Bars	Lbs.	7300		
Concrete Piles	Lin. Ft.	273		
Timber Piles	Lin. Ft.	520		

**NOTE:**  
 Work this sheet in conjunction with Sheet No. 12

STATE OF ILLINOIS  
 DIVISION OF HIGHWAYS  
**SOUTH ABUTMENT  
 WINGWALLS AND APPROACH BENT**  
 F.A. ROUTE 12 (10TH STREET)  
 OVER F.A.I. ROUTE 64  
 STATION 58+17.87  
 F.A.I. RT. 64 ST. CLAIR CO. SECTION 82-1HB  
 H. W. LOCHNER, INC.  
 ENGINEERS  
 CHICAGO, ILLINOIS

SHEET  
 13 of 18