

**FOR INFORMATION ONLY**

ROUTE NO.	SECTION	COUNTY	TOTAL SHEETS	SHEET NO.
F.A.I.-64	82-1HB	ST. CLAIR	110	91
FED. ROAD DIV. NO. 4		ILLINOIS PROJECT		

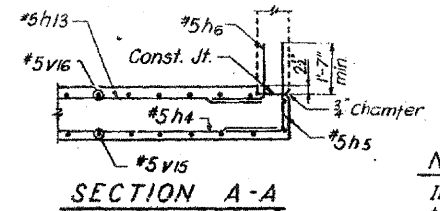
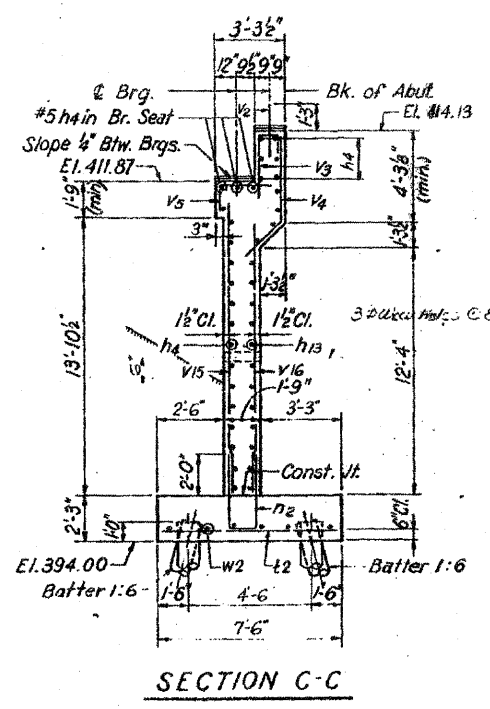
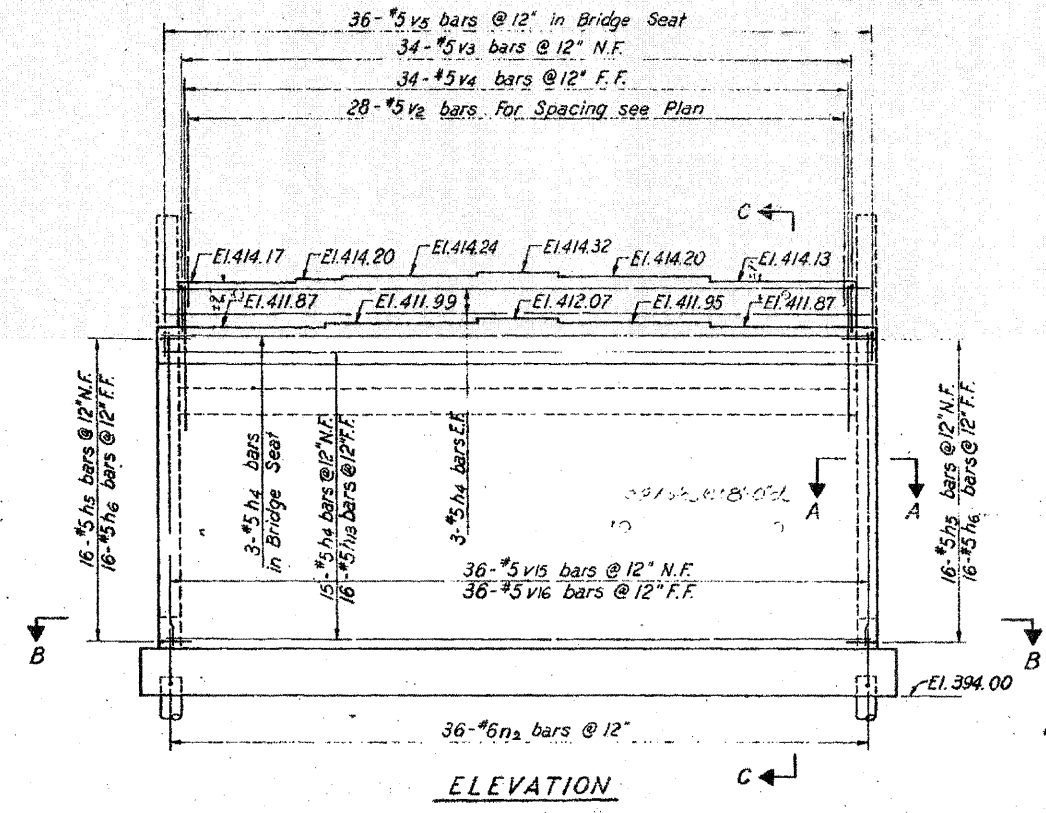
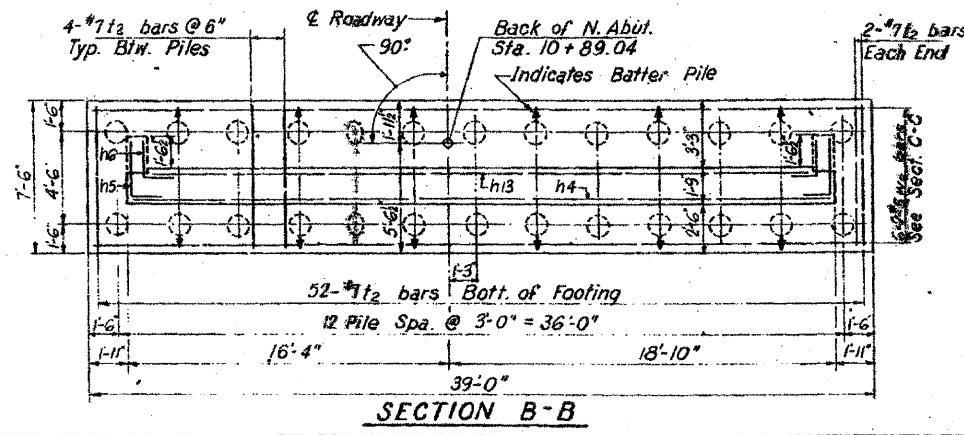
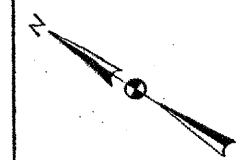
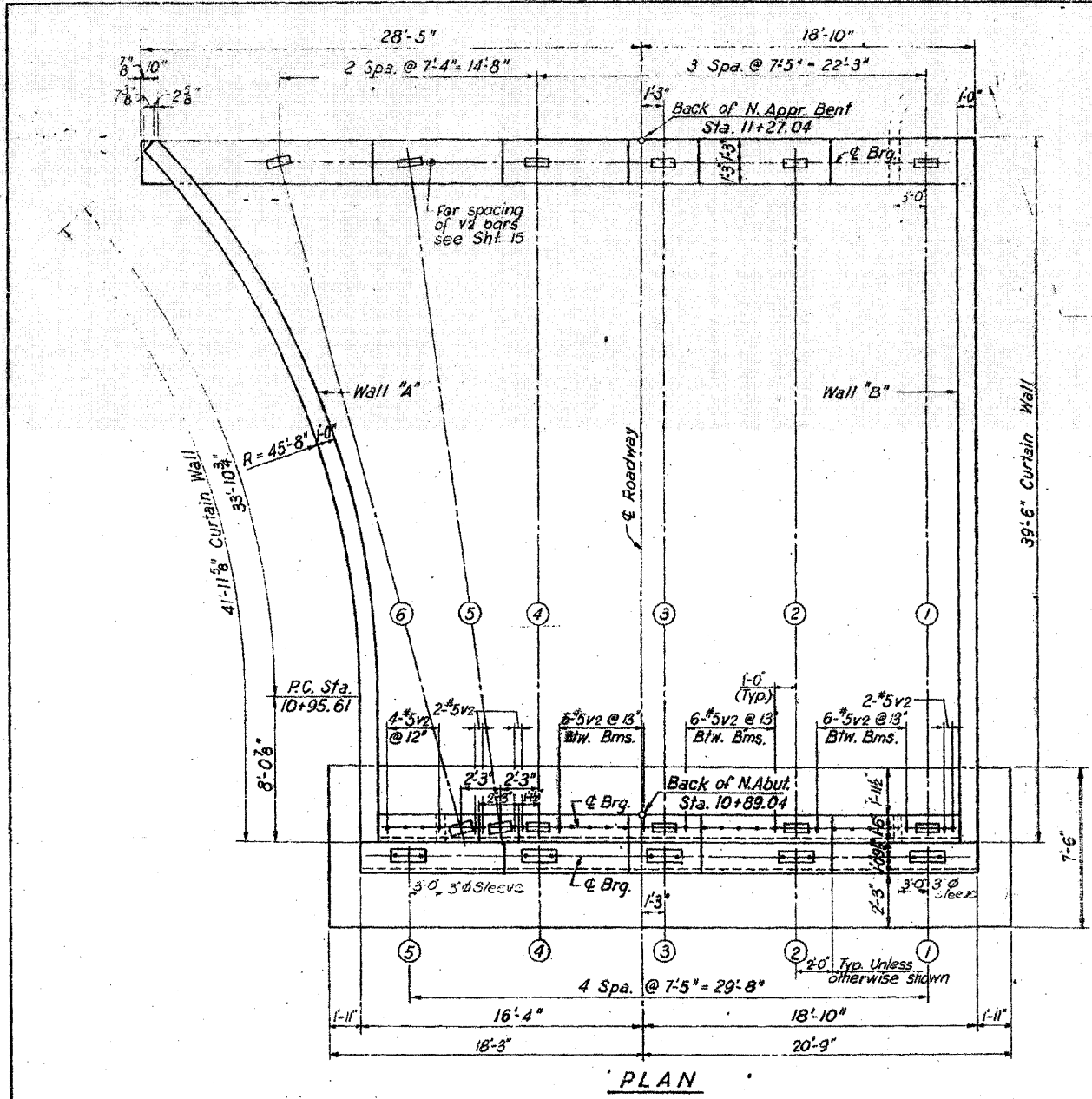
**KEY TO NOTATION**

N.F. = Near Face  
 F.F. = Far Face  
 E.F. = Each Face

**PILE DATA**

Type: Timber  
 Capacity: 23 Tons  
 Est. Length: 14 Ft.  
 No. Required: 26

3" Conduit to be extended beyond curb and sidewalk and to terminate at a point outside of shoulder. Thread and cap each end. Co. 15 is minimal.



**NOTES:**

In placing reinforcement bars care shall be taken to clear anchor bolts.  
 Four steps monolithically with cap.  
 For Bar List, Bill of Material and bar bending diagrams see Sheet No. 15  
 Work this sheet in conjunction with Sheet No. 15

DESIGNED BY S.F.  
 DRAWN BY T.L.  
 CHECKED BY S.F.  
 APPROVED BY

STATE OF ILLINOIS  
 DIVISION OF HIGHWAYS  
**NORTH ABUTMENT**  
 F.A. ROUTE 12 (10TH STREET)  
 OVER F.A.I. ROUTE 64  
 STATION 58+17.87  
 F.A.I. RT. 64 ST. CLAIR CO. SECTION 82-1HB  
 H. W. LOCHNER, INC.  
 ENGINEERS  
 CHICAGO, ILLINOIS

SHEET  
 14 OF 18