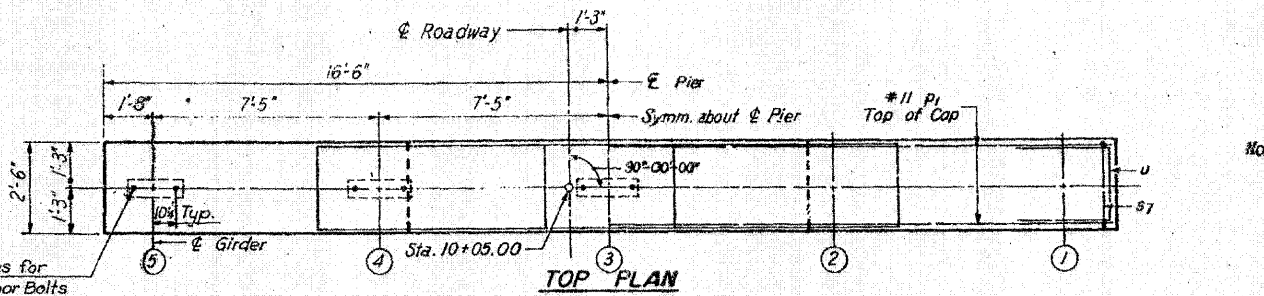
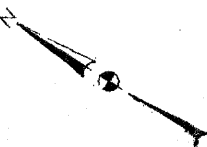
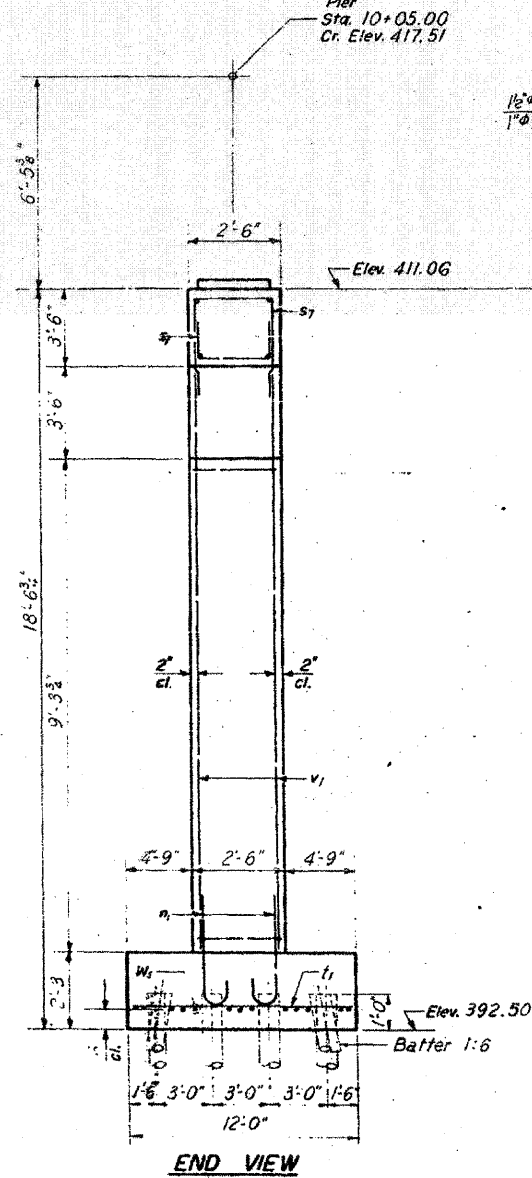


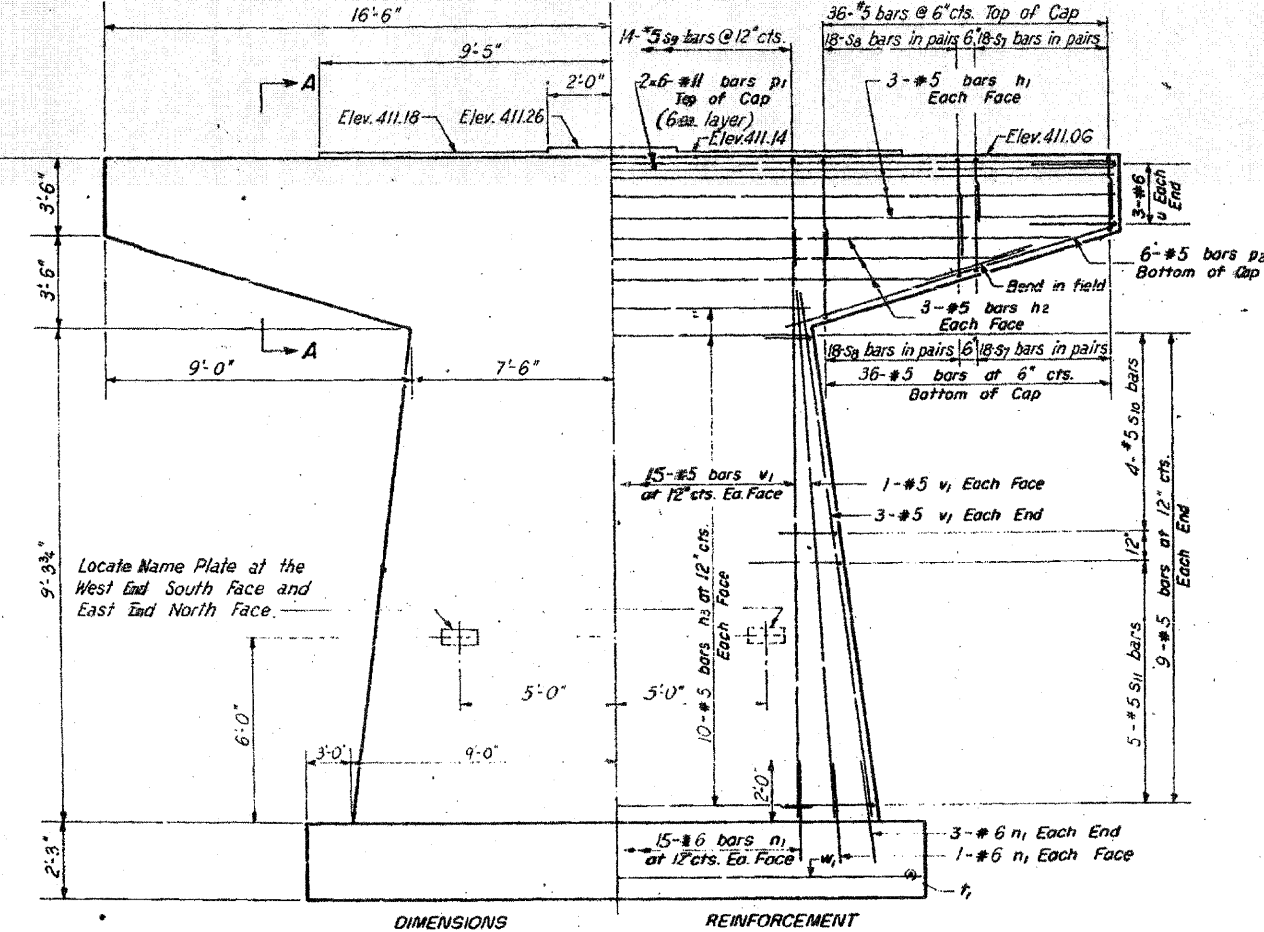
FOR INFORMATION ONLY

**PILE DATA**

Type Creosoted Timber Pile  
Capacity 23 Tons  
Est. Length 19 Ft.  
No. Req'd. 32\*  
\* Does not include Test Pile



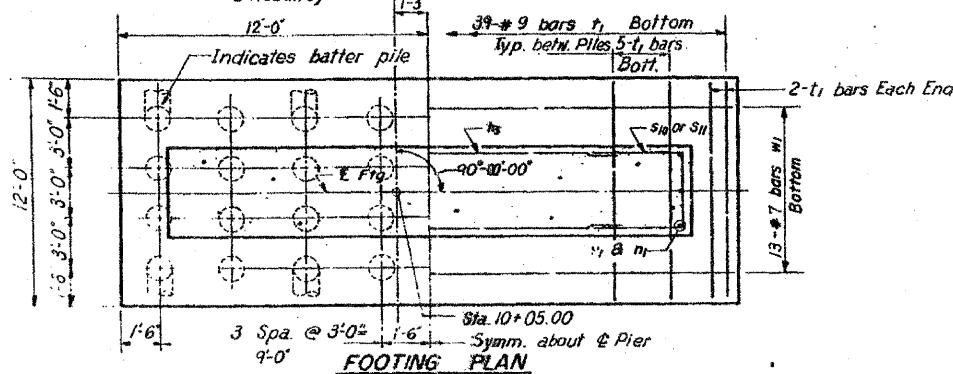
TOP PLAN



DIMENSIONS

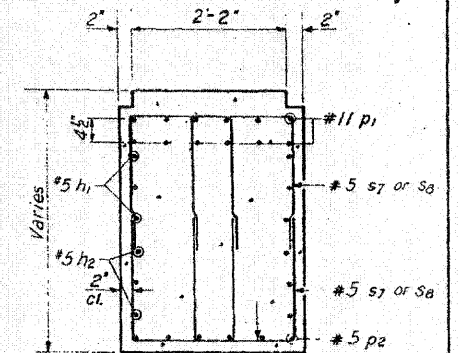
REINFORCEMENT

ELEVATION

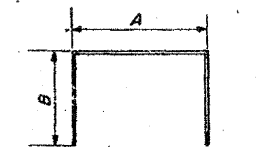


FOOTING PLAN

Note: All edges shall have standard 3/4" chamfers except footings. Space reinforcement in cap to miss anchor bolts. Min. bar laps = 24 dia. unless otherwise noted. Pile steps monolithically with cap.



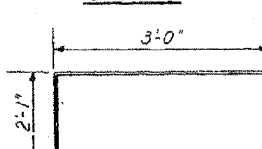
SECTION A-A



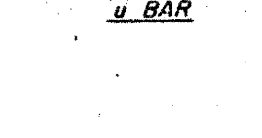
A & B DIMENSIONS

Bar	A	B
s7	1'-5"	3'-0"
s8	1'-5"	4'-0"
s9	2'-2"	4'-3"
s10	2'-2"	2'-0"
s11	2'-2"	2'-6"

s BARS



u BAR



n1 BAR

ROUTE NO.	SECTION	COUNTY	TOTAL SHEETS	SHEET NO.
F. A. I. - 64	82-1HB	ST. CLAIR	110	93
FED. ROAD DIST. NO. 3 ILLINOIS PROJECT				

**BILL OF MATERIAL**

Bar	No.	Size	Length	Shape
h1	6	#5	32'-8"	—
h2	6	#5	23'-6"	—
h3	20	#5	14'-6"	—
n1	40	#6	4'-8"	U
p1	12	#11	32'-8"	—
p2	12	#5	10'-6"	—
s7	72	#5	7'-5"	□
s8	72	#5	9'-5"	□
s9	14	#5	10'-8"	□
s10	8	#5	6'-2"	□
s11	10	#5	7'-2"	□
t1	39	#9	11'-6"	—
u	6	#6	8'-1"	□
v1	40	#5	3'-0"	—
w1	13	#7	23'-3"	—
Class X Concrete 10 Yds 55.9				
Reinforcement Bars Lbs. 7460				
Timber Piles Lin. Ft. 224				
Test Pile Each 1				
Name Plates Each 2				

STATE OF ILLINOIS  
DIVISION OF HIGHWAYS  
PIER  
F. A. ROUTE 12 (10TH STREET)  
OVER F. A. ROUTE 64  
STATION 58+17.87  
F. A. I. RT. 64 ST. CLAIR CO. SECTION 82-1HB  
H. W. LOCHNER, INC.  
ENGINEERS  
CHICAGO, ILLINOIS  
SHEET NO. 16 OF 18

FILE NAME =  
D91r1-092-0150-sht-pln17.dgn

USER NAME = maronik  
DESIGNED BY R.M.R.  
DRAWN BY T.L.  
CHECKED BY R.M.R.  
PLOT SCALE = 480,000 / 1 / ft.  
PLOT DATE = MAR. 31, 2011

DESIGNED -  
DRAWN PP  
CHECKED AB  
DATE 03/31/2011

REVISED -  
REVISED -  
REVISED -  
REVISED -

STATE OF ILLINOIS  
DEPARTMENT OF TRANSPORTATION

EXISTING BRIDGE PLAN - 10TH STREET

SCALE: NONE SHEET NO. 17 OF 19 SHEETS STA. TO STA.

F. A. RTE. SECTION COUNTY TOTAL SHEETS SHEET NO.  
82-1-3HB, 82-2N, 82-1-12RS ST. CLAIR 352 297  
9166/9180/9213/9214 CONTRACT NO. 76C51  
FED. ROAD DIST. NO. ILLINOIS FED. AID PROJECT