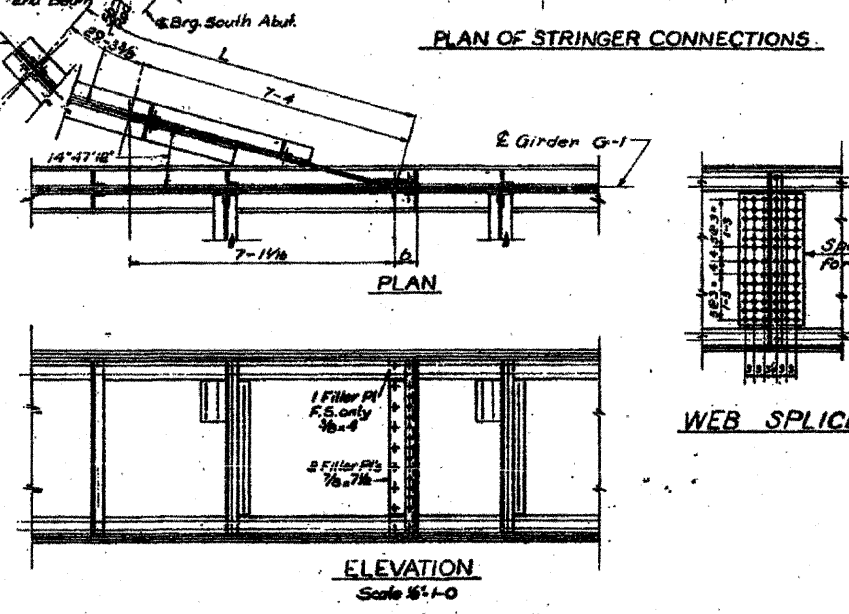
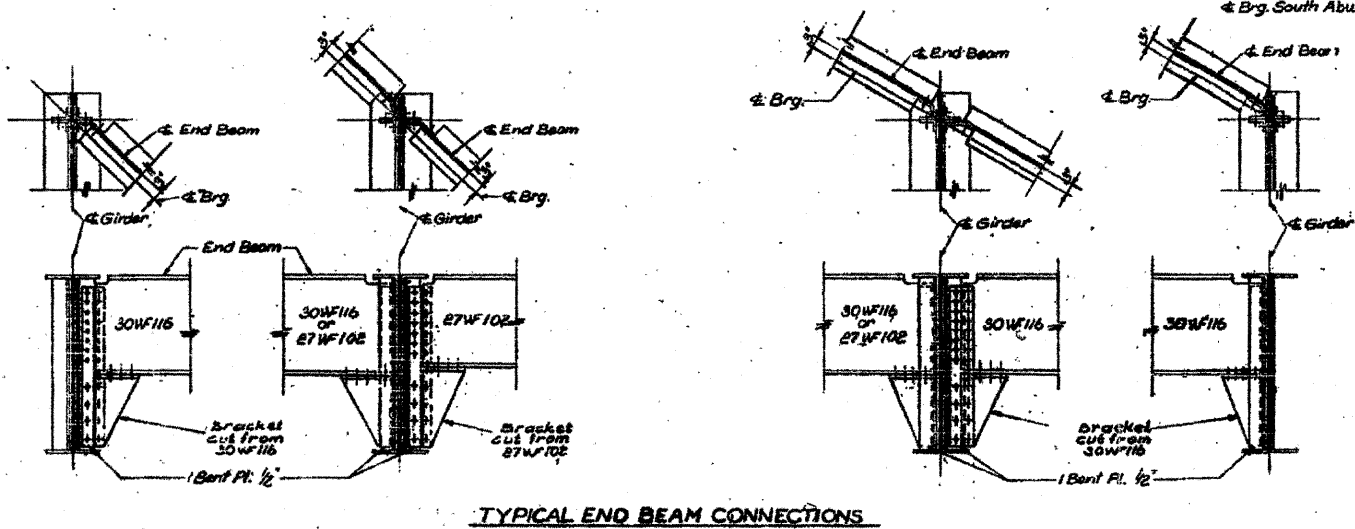
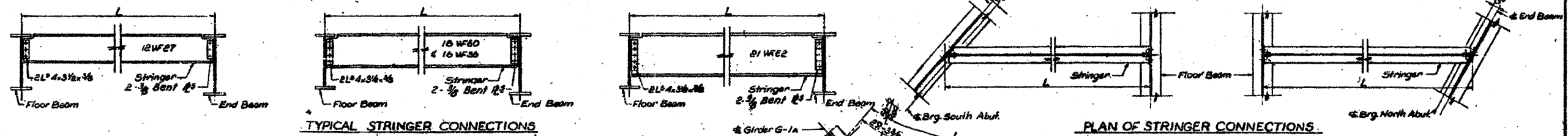
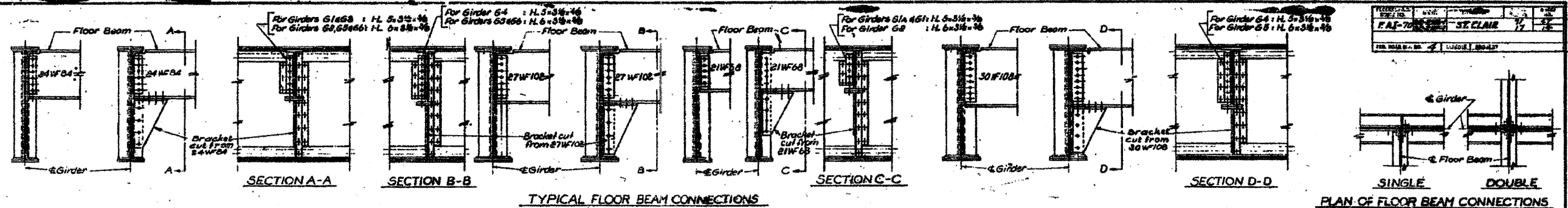
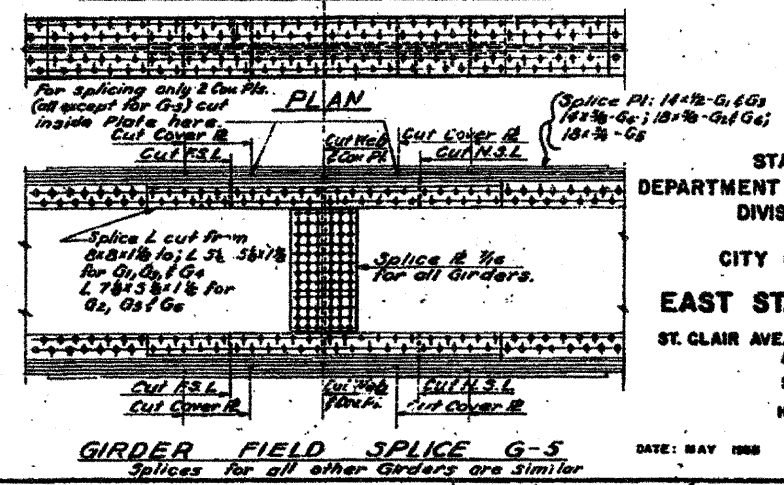
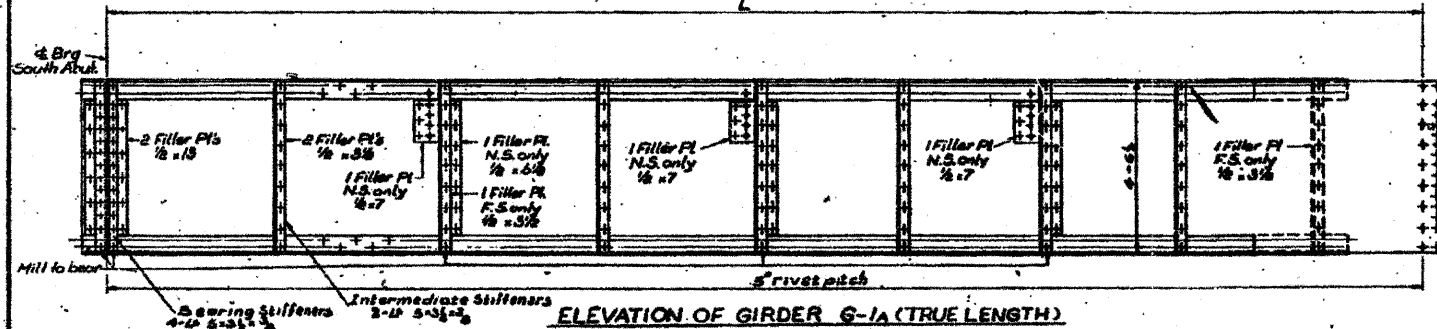


FOR INFORMATION ONLY



| Mark | L | Material |
|------|-----------|----------|
| S-1 | 15-5 1/2 | 12WF60 |
| S-2 | 6-10 3/4 | 12WF27 |
| S-3 | 18-0 1/2 | 16WF36 |
| S-4 | 8-4 1/2 | 16WF36 |
| S-5 | 13-5 1/2 | 16WF45 |
| S-6 | 9-5 3/8 | 16WF36 |
| S-7 | 16-1 1/2 | 21WF60 |
| S-8 | 6-0 1/2 | 12WF27 |
| S-9 | 11-7 1/2 | 16WF36 |
| S-10 | 18-5 1/2 | 16WF36 |
| S-11 | 11-0 1/2 | 16WF36 |
| S-12 | 7-9 1/2 | 12WF27 |
| S-13 | 9-5 1/2 | 16WF36 |
| S-14 | 4-11 1/2 | 12WF27 |
| S-15 | 15-1 1/2 | 16WF45 |
| S-16 | 10-10 1/2 | 16WF45 |
| S-17 | 10-5 | 16WF36 |
| S-18 | 7-2 1/2 | 12WF27 |

| Mark | L | Material |
|------|-----------|----------|
| EB1 | 21-5 1/2 | 27WF102 |
| EB2 | 28-6 1/2 | — |
| EB3 | — | 27WF102 |
| EB4 | 30-5 1/2 | 30WF16 |
| EB5 | 29-10 1/2 | 30WF16 |
| EB6 | 20-3 1/2 | 27WF102 |
| EB7 | — | 27WF102 |
| EB8 | 26-3 1/2 | 30WF16 |
| EB9 | 20-0 1/2 | 27WF102 |



STATE OF ILLINOIS
DEPARTMENT OF PUBLIC WORKS & BLDGS.
DIVISION OF HIGHWAYS
CITY OF EAST ST. LOUIS
EAST ST. LOUIS EXPRESSWAY
ST. CLAIR AVE. OVER EAST BOUND EXPRESSWAY AND ROADWAY "R"
STEEL DETAILS
H.W. LOCHNER, INC.
ENGINEERS
DATE: MAY 1958 CHICAGO, ILLINOIS SHEET NO. 14

Designed by: B.S.T.
Drawn by: E.A.
Checked by: B.S.T.