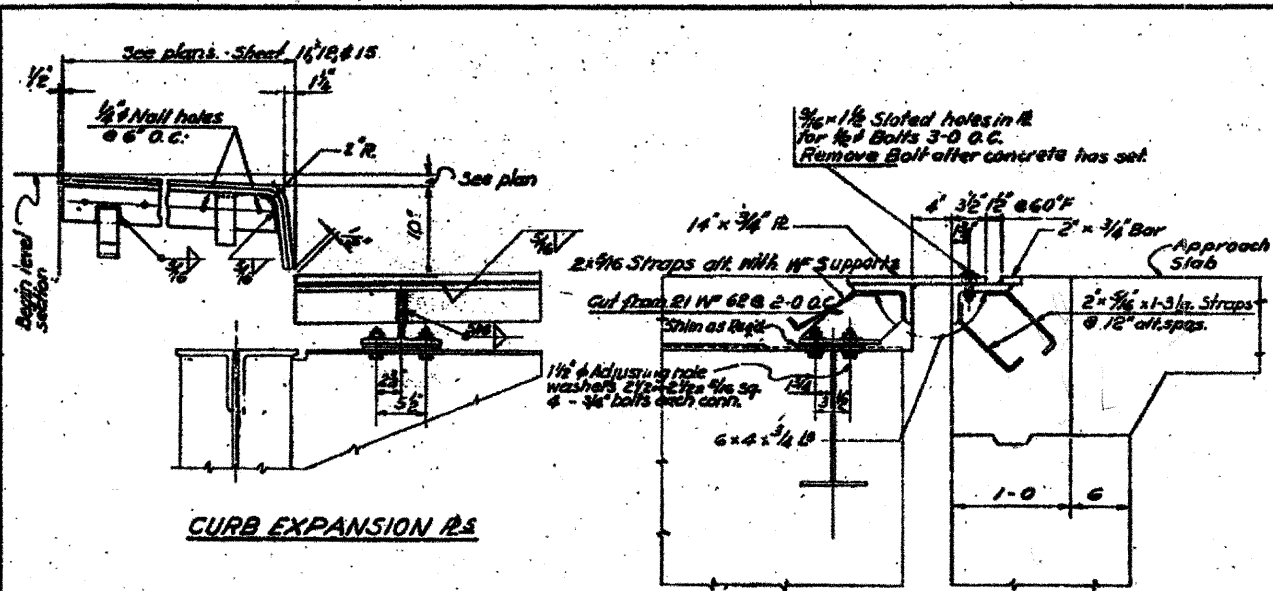


STATE	COUNTY
ILLINOIS	ST. CLAIR
TO STA.	
FROM STA.	

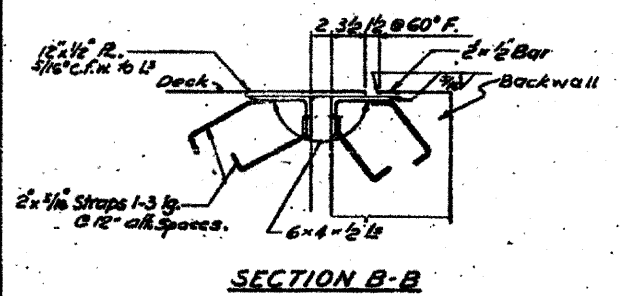
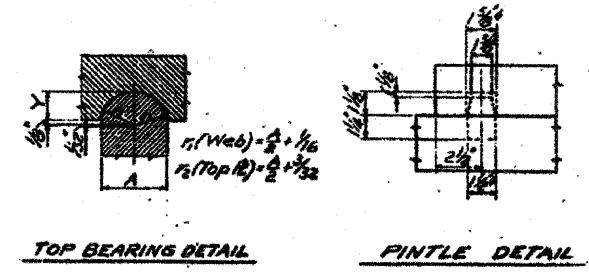


CURB EXPANSION RS

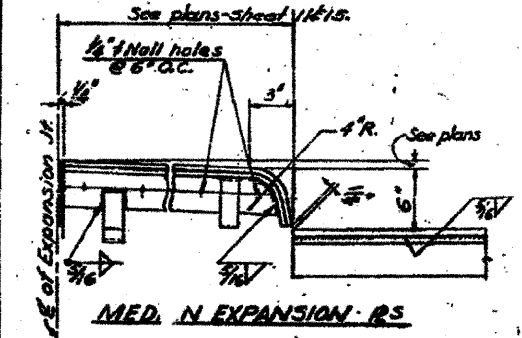
All welds shown are 3/8" continuous filled welds
SECTION A-A

No. Abutment	So. Abutment
Bearing Shim	Bearing Shim
G-4	G-3
3/8"	3/8"

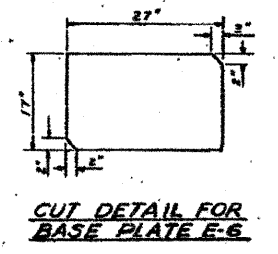
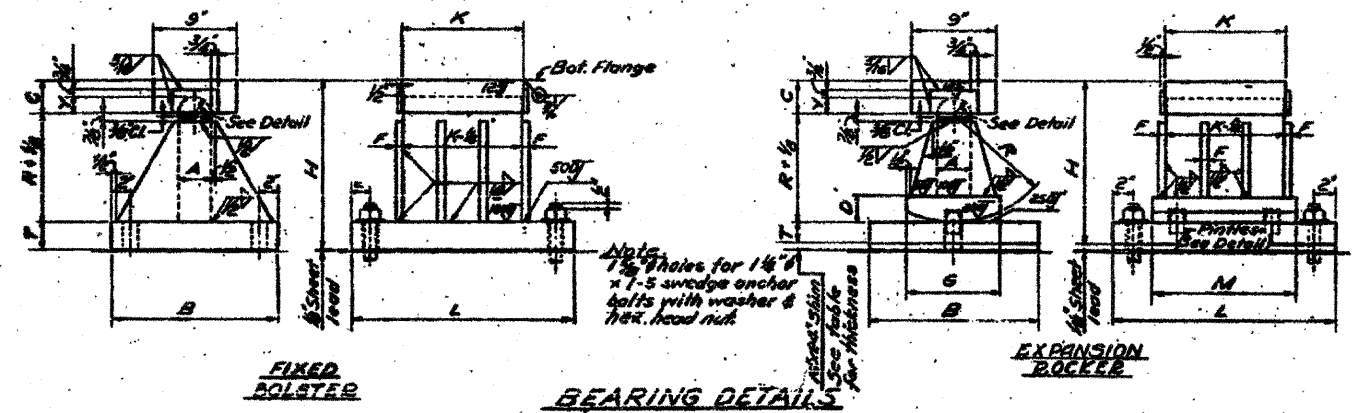
Type	Dimensions Inches													
R/R	Exp.	A	B	C	D	F	G	H	K	L	M	R	T	Y
E1	3	16	3 1/2	2 1/2	1/2	9	15 1/2	11 1/2	24	18	10 1/2	2 1/4	1 1/2	
E4	3	17	3 1/2	2 1/2	1/2	9	15 1/2	11 1/2	24	18	10 1/2	2 1/4	1 1/2	
E7	3	20	3 1/2	2 1/2	1/2	9	15 1/2	11 1/2	24	18	10 1/2	2 1/4	1 1/2	



SECTION B-B



MED. N EXPANSION RS



CUT DETAIL FOR BASE PLATE E-6

Designed by: B.S.T.
Drawn by: E.M.
Checked by: B.S.T.

STATE OF ILLINOIS
DEPARTMENT OF PUBLIC WORKS & BLDGS.
DIVISION OF HIGHWAYS
CITY OF EAST ST. LOUIS
EAST ST. LOUIS EXPRESSWAY
ST. CLAIR AVE. OVER EASTBOUND EXPRESSWAY
AND ROADWAY "R"
STEEL DETAILS
STANDARD SD 1
H. W. LOCHNER, INC.
ENGINEERS
DATE: MAY 1966 CHICAGO, ILLINOIS SHEET NO. 17

Revised - One Dimension Change - E-110/59 - PL

FILE NAME = DBT-r1-082-0099-shr-pln18.dgn	USER NAME = patelp2	DESIGNED DRAWN PP	REVISED -	STATE OF ILLINOIS DEPARTMENT OF TRANSPORTATION	EXISTING BRIDGE PLAN - ST. CLAIR AVENUE S.N. 082-0099	F.A. RTE.	SECTION	COUNTY	TOTAL SHEETS	SHEET NO.			
	PLOT SCALE = 48.000 ' / in.	CHECKED AB	REVISED -			SCALE: NONE	SHEET NO. 18 OF 20 SHEETS	STA.	TO STA.	82-1-3HB, 82-2N, 82-1-12RS	ST. CLAIR	352	301R
	PLOT DATE = 4/13/2011	DATE 03/31/2011	REVISED -							• 9166/9180/9213/9214	CONTRACT NO. 76C51		
										FED. ROAD DIST. NO. ILLINOIS FED. AID PROJECT			