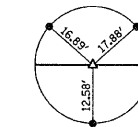


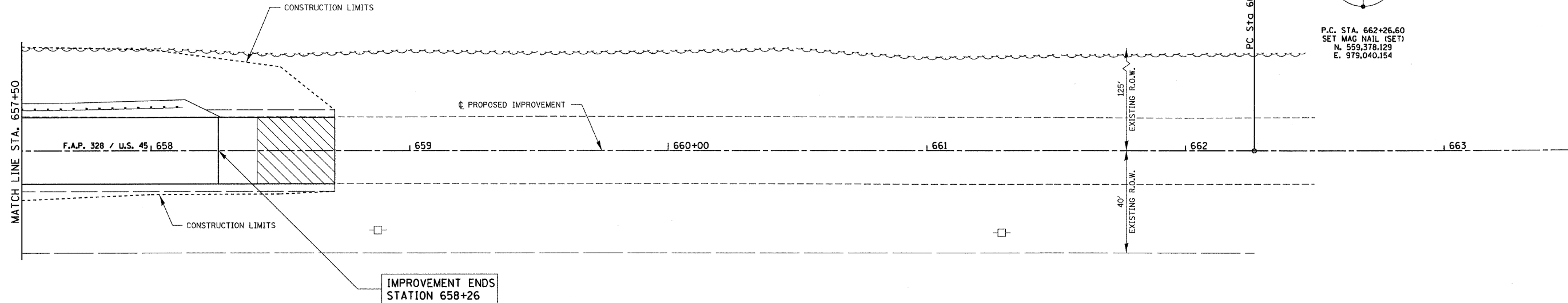
SEC. 5 T4S R8E 3RD P.M.

ALL POINTS
SET CONCRETE NAIL
& SHINER AT EDGE
OF PAVEMENT



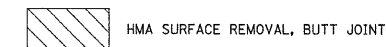
P.C. STA. 662+26.60
SET MAG NAIL (SET)
N. 559,378.129
E. 979,040.154

CROPLAND



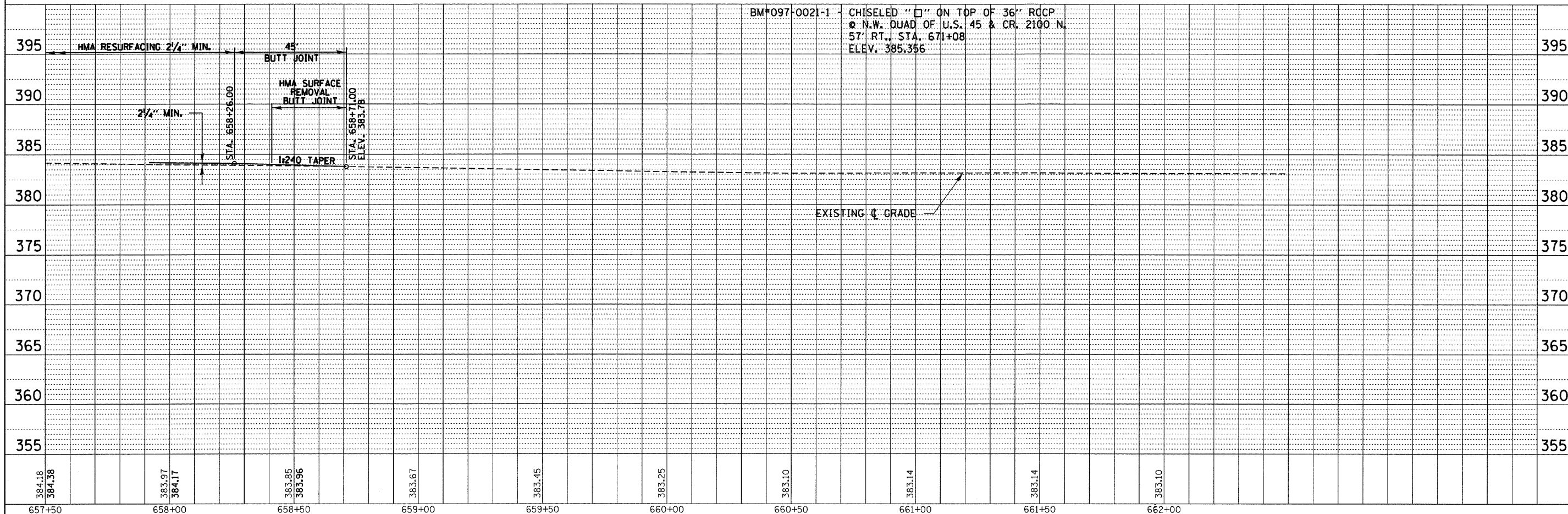
IMPROVEMENT ENDS
STATION 658+26

LEGEND



PLAN	SURVEYED	DATE
	PLotted	
	NOTED	
	BY	
	NO.	

PROFILE	SURVEYED	DATE
	PLotted	
	NOTED	
	BY	
	NO.	



FILE NAME = 090148-ah-pp3.dgn	USER NAME =	DESIGNED - L.F.S.	REVISED -	STATE OF ILLINOIS DEPARTMENT OF TRANSPORTATION	PLAN & PROFILE US ROUTE 45	F.A.P.	SECTION	COUNTY	TOTAL SHEETS	SHEET NO.
HAMPTON, LENZINI AND RENWICK, INC. 2088 STEVENSON DRIVE, SUITE 201 SPRINGFIELD, ILLINOIS 62760	PLLOT SCALE =	DRAWN - D.T.M.	REVISED -			328	1058-1	WHITE	54	11
ILLINOIS PROFESSIONAL DESIGN FIRM L5 / P6 / SE CORP. 184.000988	PLLOT DATE = 7/13/2011	CHECKED - J.W.F.	REVISED -			CONTRACT NO. 78161				
		DATE = 04/05/11	REVISED -			ILLINOIS FED. AID PROJECT				