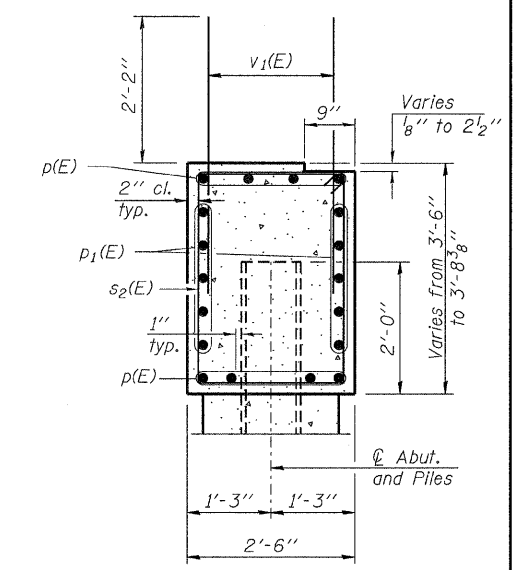
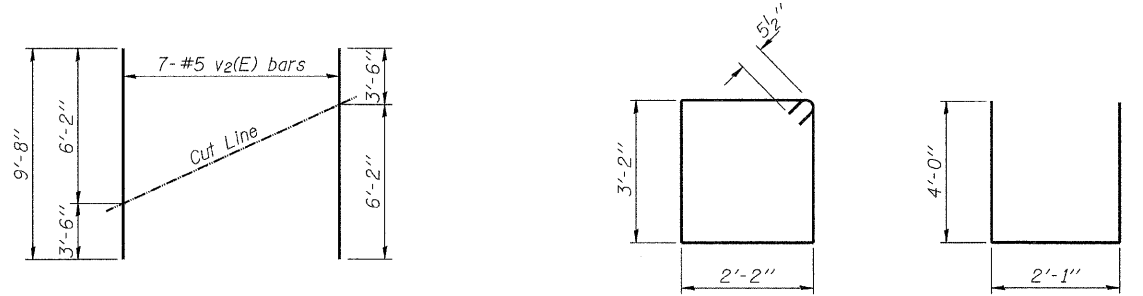


**PILE DATA**  
 Type: Steel HP14x89 with Pile Shoes  
 Nominal Required Bearing: 705 Kips/pile  
 Factored Resistance Available: 388 Kips/pile  
 Est. Length: 45' (North Abut.)  
 Est. Length: 40' (South Abut.)  
 No. Production Piles: 14  
 No. Test Piles: 2 (1-NA, 1-SA)



**SEC. THRU ABUT.**

**BILL OF MATERIAL (2 ABUTMENTS)**

Bar	No.	Size	Length	Shape
h(E)	72	#6	10'-2"	—
p(E)	32	#7	17'-3"	—
p1(E)	40	#5	17'-3"	—
s2(E)	72	#5	11'-7"	□
u(E)	16	#6	10'-1"	—
v1(E)	136	#5	4'-4"	—
v2(E)	28	#5	9'-8"	—
Structure Excavation			Cu. Yd.	170
Concrete Structures			Cu. Yd.	28.2
Concrete Encasement			Cu. Yd.	8.8
Reinforcement Bars, Epoxy Coated			Pound	4,960
Furnishing Steel Piles HP14x89			Foot	595
Driving Piles			Foot	595
Test Pile Steel HP14x89			Each	2
Pile Shoes			Each	16

**Notes:**  
 Pour steps monolithically with cap.  
 Space reinforcement in cap to miss anchor bolts.  
 For details of Bar Splicers, see sheet 22 of 26.  
 For details of piles and Concrete Encasement, see sheet 24 of 26.