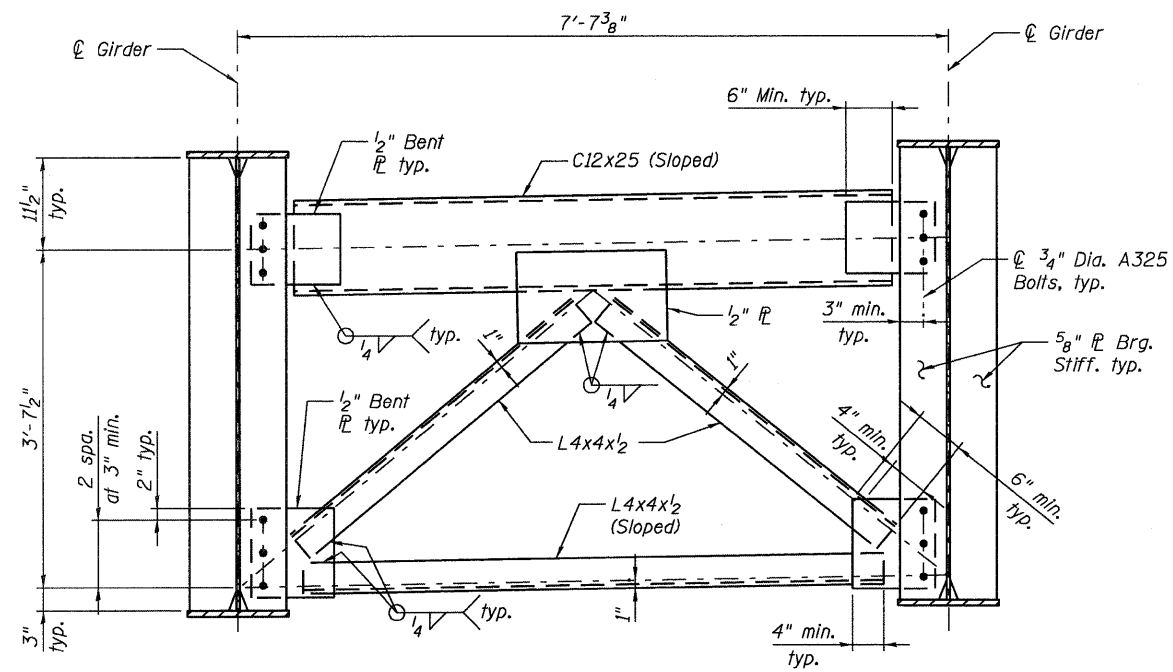
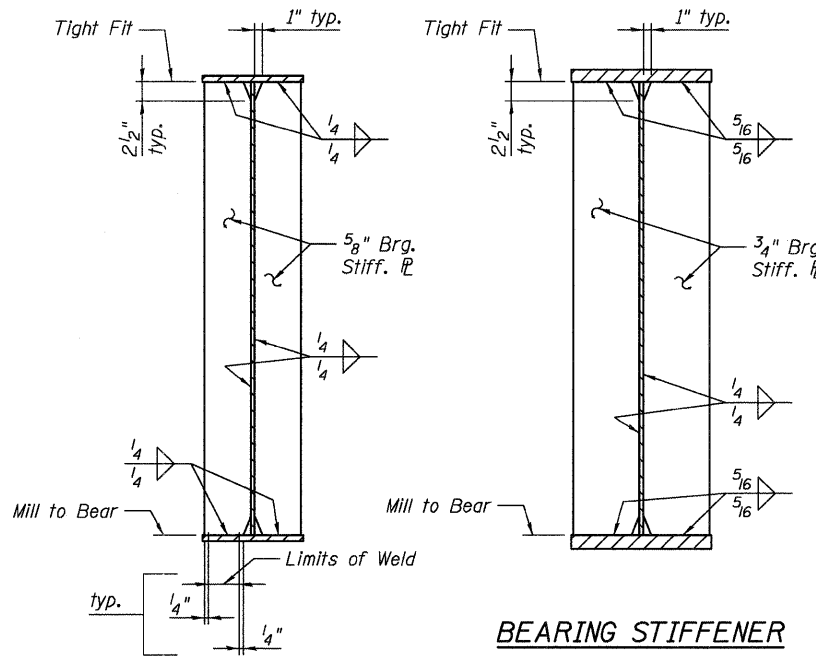


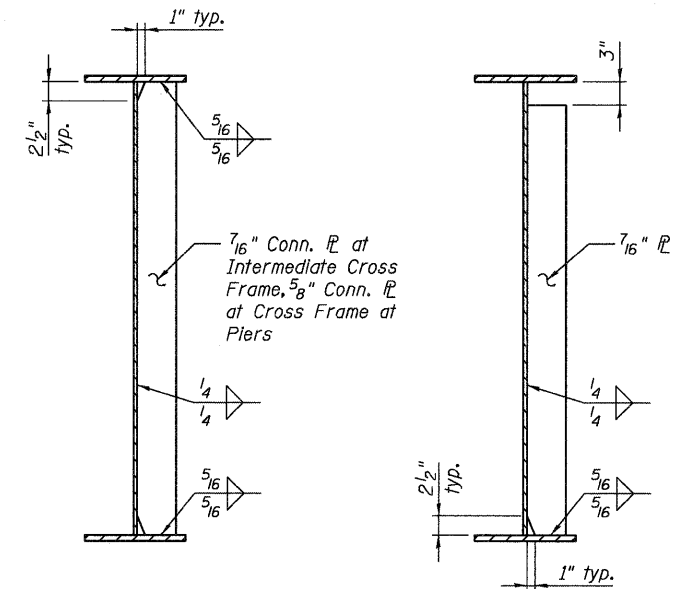
P:\CIX26703\T00cadd\709str\steelFabrication drawings\039-0074978049-Cross Frame.dgn
 29-SEP-2011
 10:39



END CROSS FRAME AT ABUTMENTS
 Two hardened washers shall be required for all oversized holes.



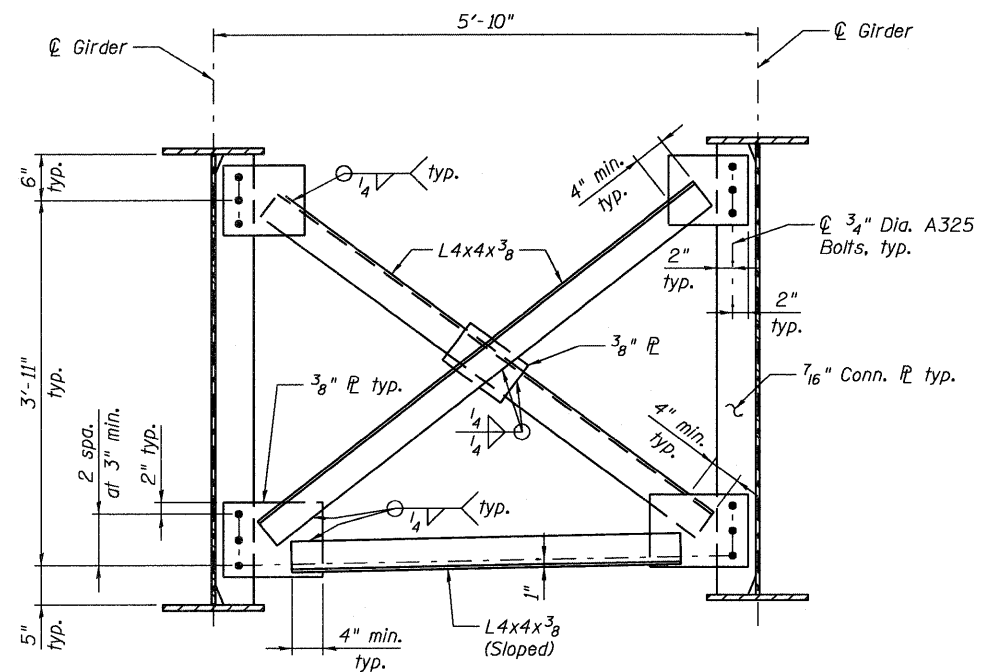
BEARING STIFFENER AT ABUTMENTS



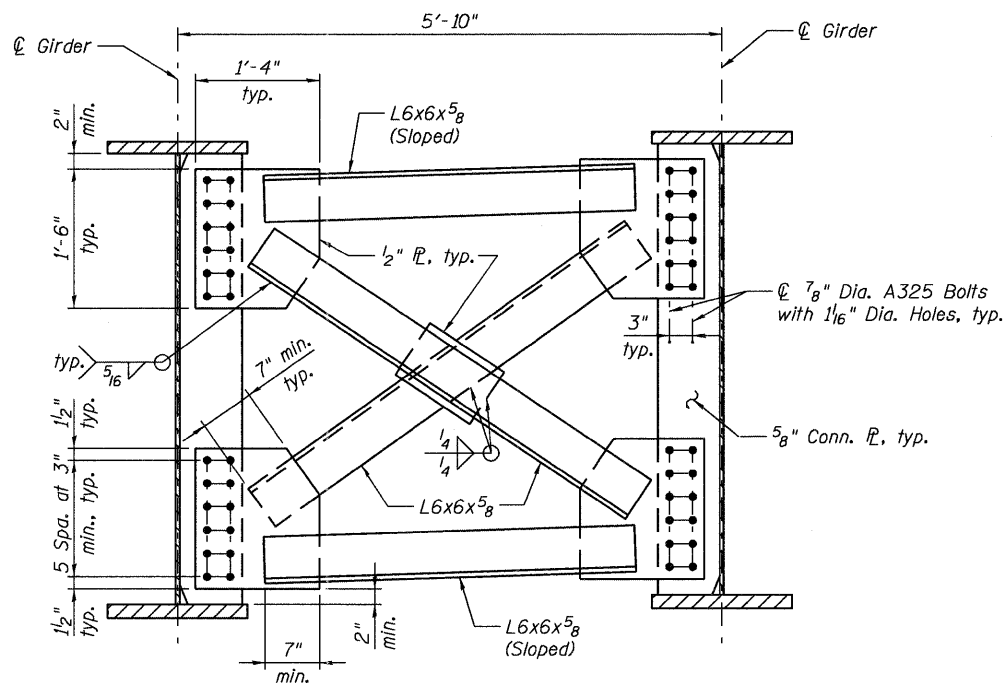
BEARING STIFFENER AT PIERS
AT CROSS FRAMES
INTERMEDIATE STIFFENER

(Detail of Intermediate stiffener is shown near pier. Intermediate stiffener near abutment shall have a 3" gap at bottom flange)

CONNECTION PLATE DETAILS



TYPICAL INTERMEDIATE CROSS FRAME
 Two hardened washers shall be required for all oversized holes.



CROSS FRAME AT PIERS
 Two hardened washers shall be required for all oversized holes.

STRUCTURAL STEEL NOTES

All structural steel shall be AASHTO M270, Grade 50W unless otherwise noted.
 Fasteners shall be 3/4" diameter high strength bolts with 15/16" diameter open holes unless otherwise noted.
 High strength bolts are designed for a Class A contact surface in a standard hole for a slip-critical connection.
 The contact surface of joints with oversized holes shall be free of paint or lacquer.
 All bearing stiffeners shall be vertical in the completed structure.

JACOBS

USER NAME =
 PLOT DATE = 29-SEP-2011

DESIGNED - B. ERSCHEN
 CHECKED - M. CRONIN
 DRAWN - E. KRACK
 CHECKED - J. SMITH

REVISED -
 REVISED -
 REVISED -
 REVISED -

**STATE OF ILLINOIS
 DEPARTMENT OF TRANSPORTATION**

**CROSS FRAME DETAILS
 STRUCTURE NO. 039-0074**

SHEET NO. 19 OF 35 SHEETS

F.A.P. RTE. 686	SECTION 114F-1	COUNTY JACKSON	TOTAL SHEETS 15	SHEET NO. 24
CONTRACT NO. 78283				
ILLINOIS FED. AID PROJECT				