

WEST ABUTMENT  
BILL OF MATERIAL

Bar	No.	Size	Length	Shape
h(E)	12	#5	41'-7"	—
h <sub>1</sub> (E)	14	#5	10'-6"	└
h <sub>2</sub> (E)	14	#5	10'-6"	└
h <sub>3</sub> (E)	26	#4	15'-3"	—
h <sub>4</sub> (E)	18	#4	15'-2"	—
h <sub>5</sub> (E)	5	#6	41'-7"	—
n(E)	26	#6	12'-6"	—
n <sub>1</sub> (E)	12	#6	6'-8"	—
p(E)	12	#7	45'-7"	—
p <sub>1</sub> (E)	12	#7	17'-6"	—
s(E)	68	#4	18'-5"	—
s <sub>1</sub> (E)	32	#4	9'-5"	—
u(E)	4	#6	14'-5"	—
u <sub>1</sub> (E)	4	#6	12'-7"	└
u <sub>2</sub> (E)	2	#4	9'-8"	└
u <sub>3</sub> (E)	2	#4	10'-7"	└
v(E)	42	#5	3'-9"	└
v <sub>1</sub> (E)	42	#4	3'-4"	└
v <sub>2</sub> (E)	32	#6	8'-10"	—
v <sub>3</sub> (E)	6	#6	8'-2"	—
v <sub>4</sub> (E)	26	#6	8'-10"	—
v <sub>5</sub> (E)	84	#5	7'-3"	—
Structure Excavation	Cu. Yd.		186	
Concrete Structures	Cu. Yd.		70.3	
Reinforcement Bars, Epoxy Coated	Pound		6,710	
Furnishing - Piles, HP14x73	Foot		400	
Driving Piles	Foot		400	
Test Pile, HP14x73	Each		1	
Concrete Encasement	Cu. Yd.		6.0	
Concrete Sealer	Sq. Ft.		640	

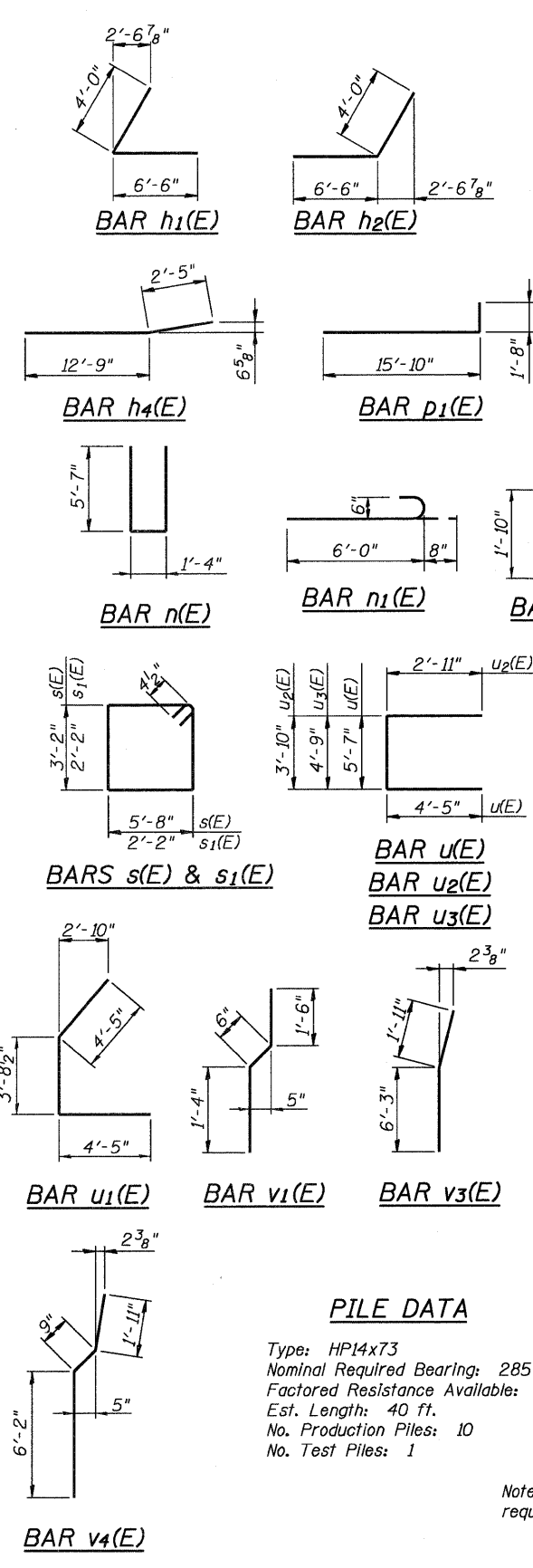
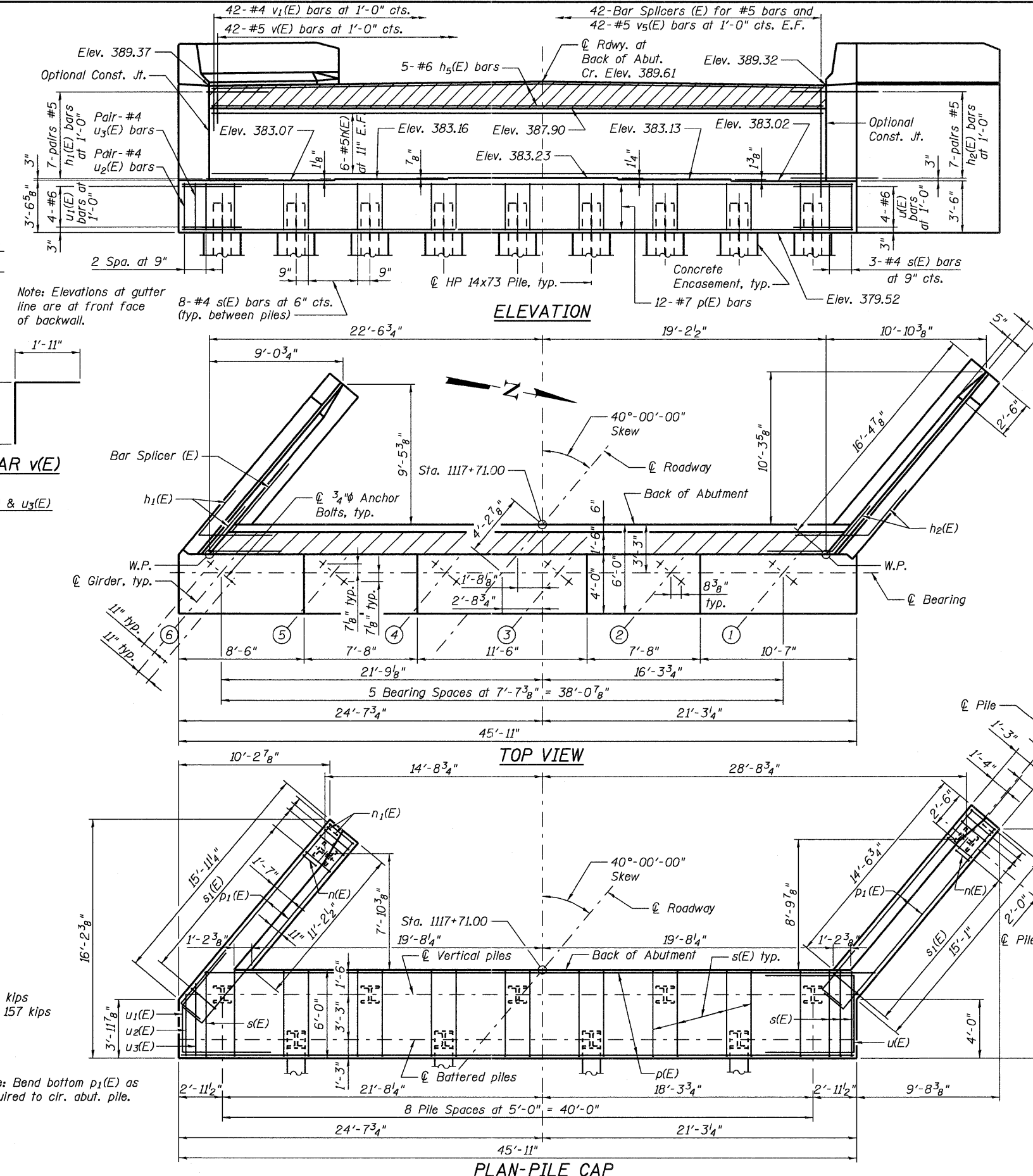
SEISMIC PILE DETAILS

Cost of 3/4" Studs shall be included in item "Furnishing Steel Piles, HP14x73."

NOTES

- Top of backwall shall conform to longitudinal grade and cross slope of roadway.
- Pour steps monolithically with cap.
- Space reinforcement in cap to miss anchor bolts.
- Concrete Sealer should be applied to the designated areas of the abutment shown on sheet 23 of 35.
- All edges shall have a standard 3/4" chamfer except as noted.
- For details of Bar Splicers, see sheet 29 of 35.
- For details of piles and Concrete Encasement, see sheet 30 of 35.

FOR INFORMATION ONLY



**PILE DATA**  
 Type: HP14x73  
 Nominal Required Bearing: 285 kips  
 Factored Resistance Available: 157 kips  
 Est. Length: 40 ft.  
 No. Production Piles: 10  
 No. Test Piles: 1

Note: Bend bottom p<sub>1</sub>(E) as required to clr. abut. pile.

10:39 29-SEP-2011 P:\C\26703\100cadd\T09str\Steel fabrication.dwg\mas039-0074978049-West Abutment.dgn