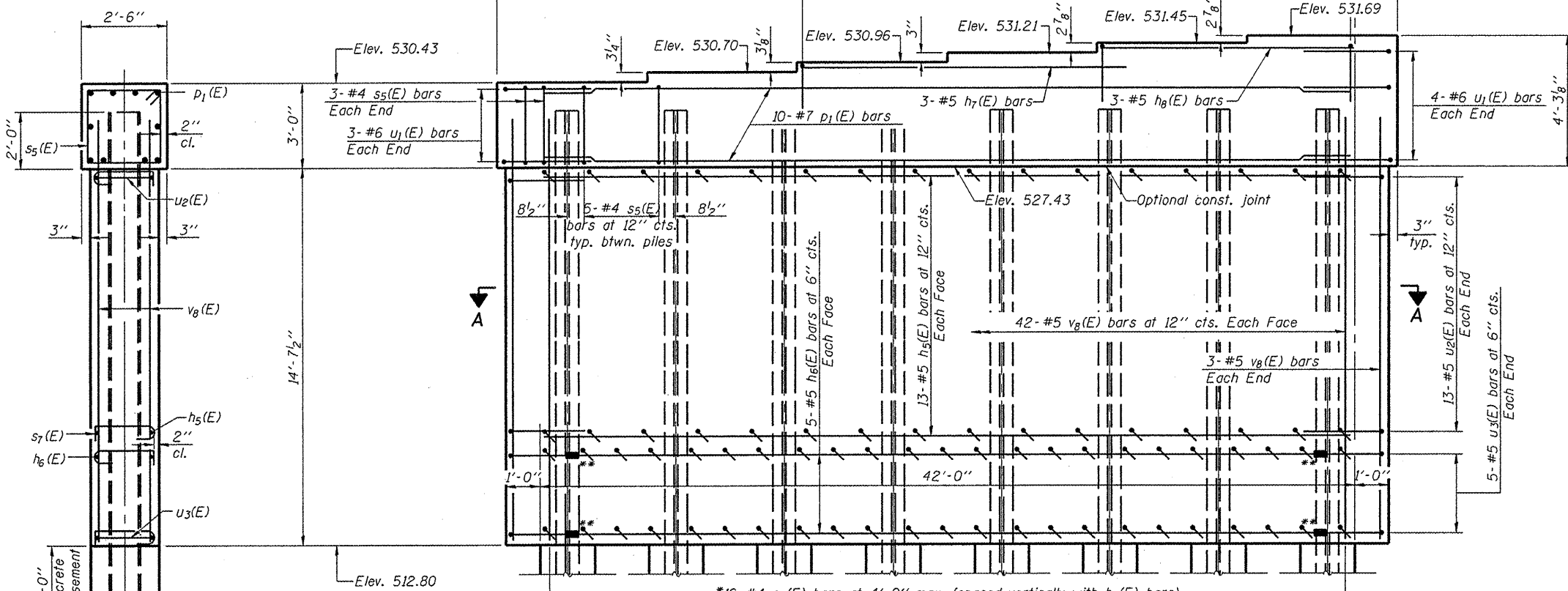
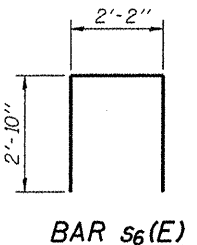
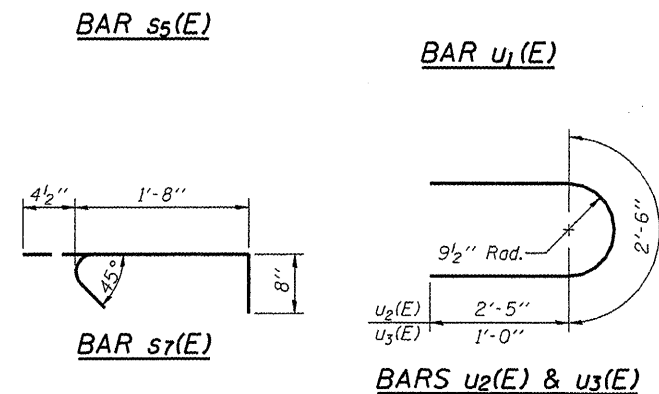
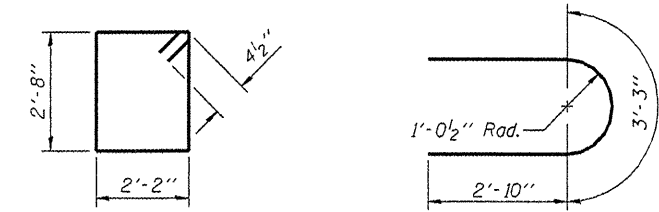
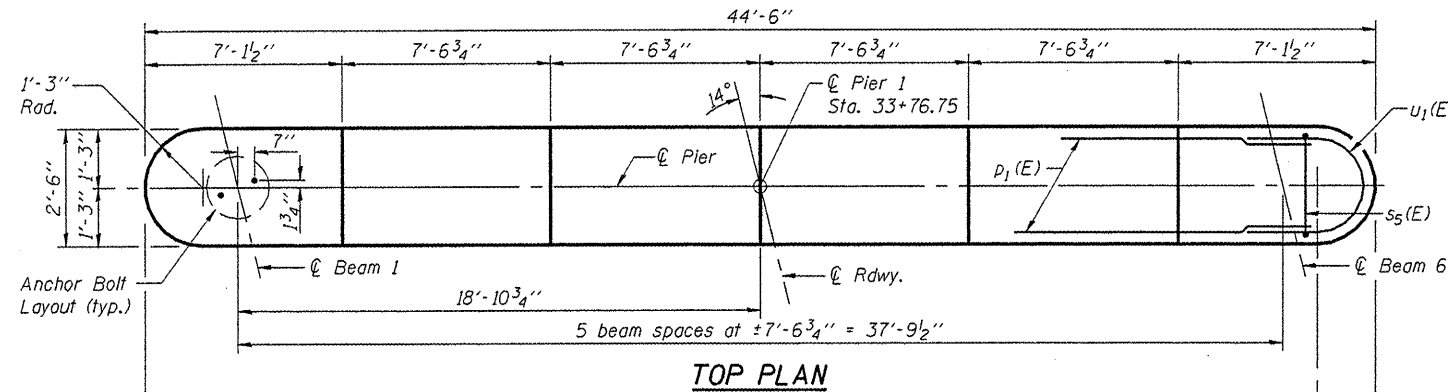


STATE OF ILLINOIS  
DEPARTMENT OF TRANSPORTATION

Notes:  
Space reinforcement in cap to miss anchor bolts.  
Pour steps monolithically with cap.  
For details of piles, see sheet 19 of 22.  
If a portion of the pier wall or concrete encasement is under water, reinforcement may be placed underwater into forms.  
Concrete shall be tremied according to Article 503.08 of the Standard Specifications to an elevation of 1'-0" above the water line at the time of construction.

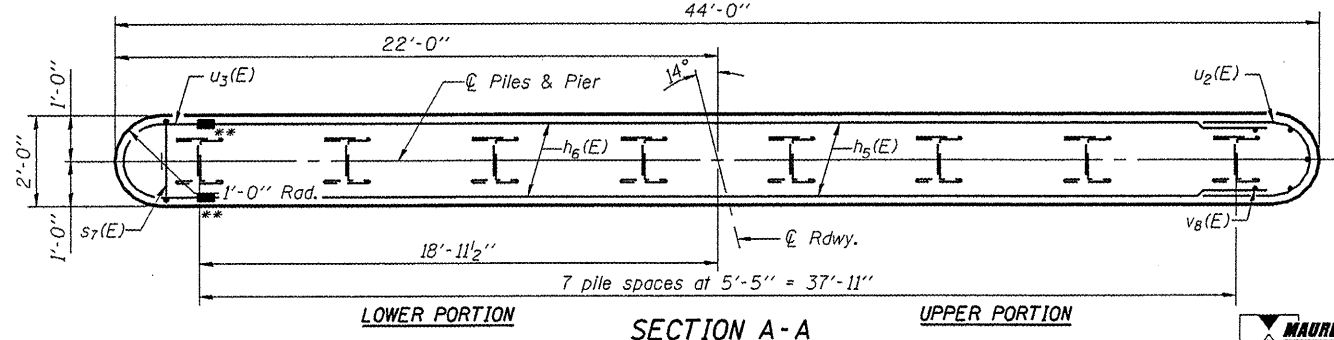
**PILE DATA**

Type: Steel HP12x53  
Nominal Required Bearing: 314k  
Factored Resistance Available: 152k  
Est. Length: 69'  
No. Production Piles: 7  
No. Test Piles: 1



\*s7(E) bars shall enclose both vertical and horizontal bars. Alternate the position of the 90 and 135 degree hooked ends both vertically and horizontally.  
\*\*Mechanical Splicers

**END VIEW**



**BILL OF MATERIAL**

Bar	No.	Size	Length	Shape
h5(E)	26	#5	42'-0"	—
h6(E)	10	#5	40'-0"	—
h7(E)	3	#5	16'-10"	—
h8(E)	3	#5	13'-3"	—
p1(E)	10	#7	42'-0"	—
s5(E)	41	#4	10'-5"	□
s6(E)	29	#4	7'-10"	U
s7(E)	323	#4	2'-9"	U
u1(E)	7	#6	8'-11"	U
u2(E)	26	#5	7'-4"	U
u3(E)	10	#5	4'-6"	U
v8(E)	90	#5	16'-0"	—
Structure Excavation		Cu. Yd.		71
Concrete Structures		Cu. Yd.		62.1
Concrete Encasement		Cu. Yd.		2.8
Reinforcement Bars, Epoxy Coated		Pound		5380
Furnishing Steel Piles, HP12x53		Foot		483
Driving Piles		Foot		483
Test Pile, HP12x53		Each		1
Anchor Bolts, 1"		Each		12
Mechanical Splicers		Each		20
Underwater Structure Excavation Protection Location 1		Each		1

**PIER 1  
STRUCTURE NO. 090-3244**

DESIGNED - JAE
CHECKED - BAS
DRAWN - SGM
CHECKED - BAS

SHEET NO. 16 22 SHEETS	T.R.	SECTION	COUNTY	TOTAL SHEETS	SHEET NO.
	156	06-07109-00-BR	TAZEWELL	53	36
			CONTRACT NO. 89472		
FED. ROAD DIST. NO. ILLINOIS FED. AID PROJECT					

