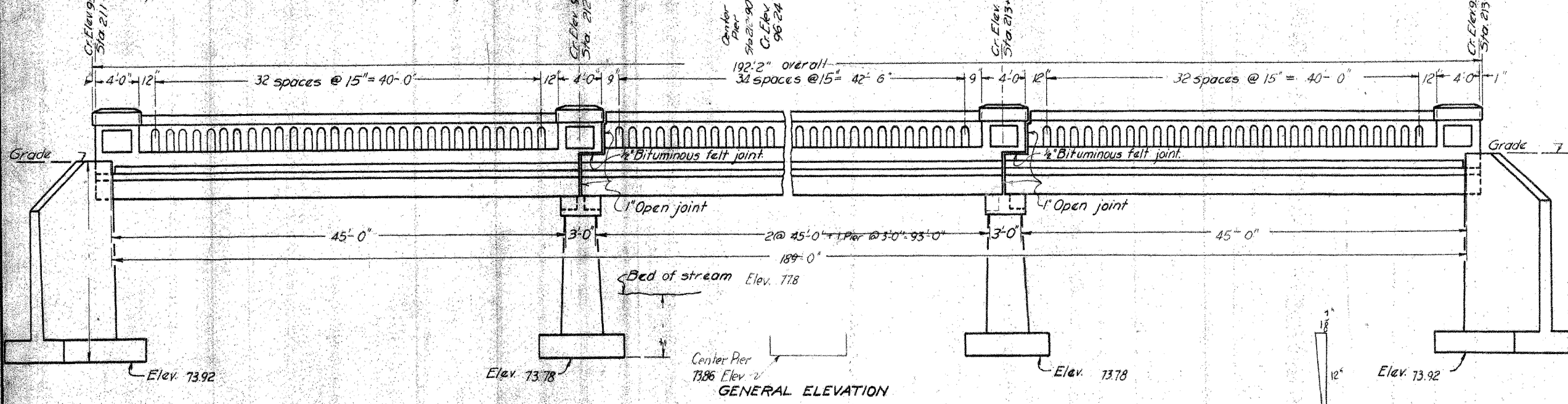


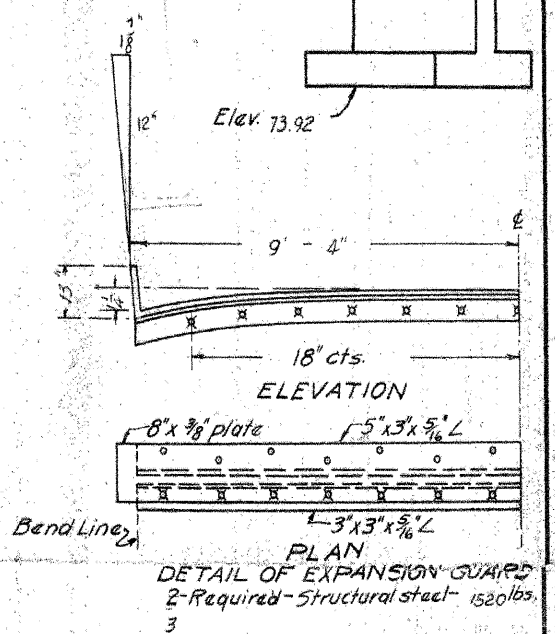
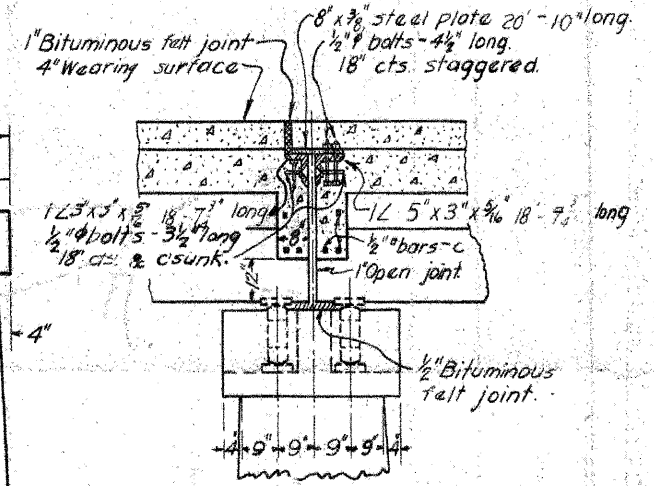
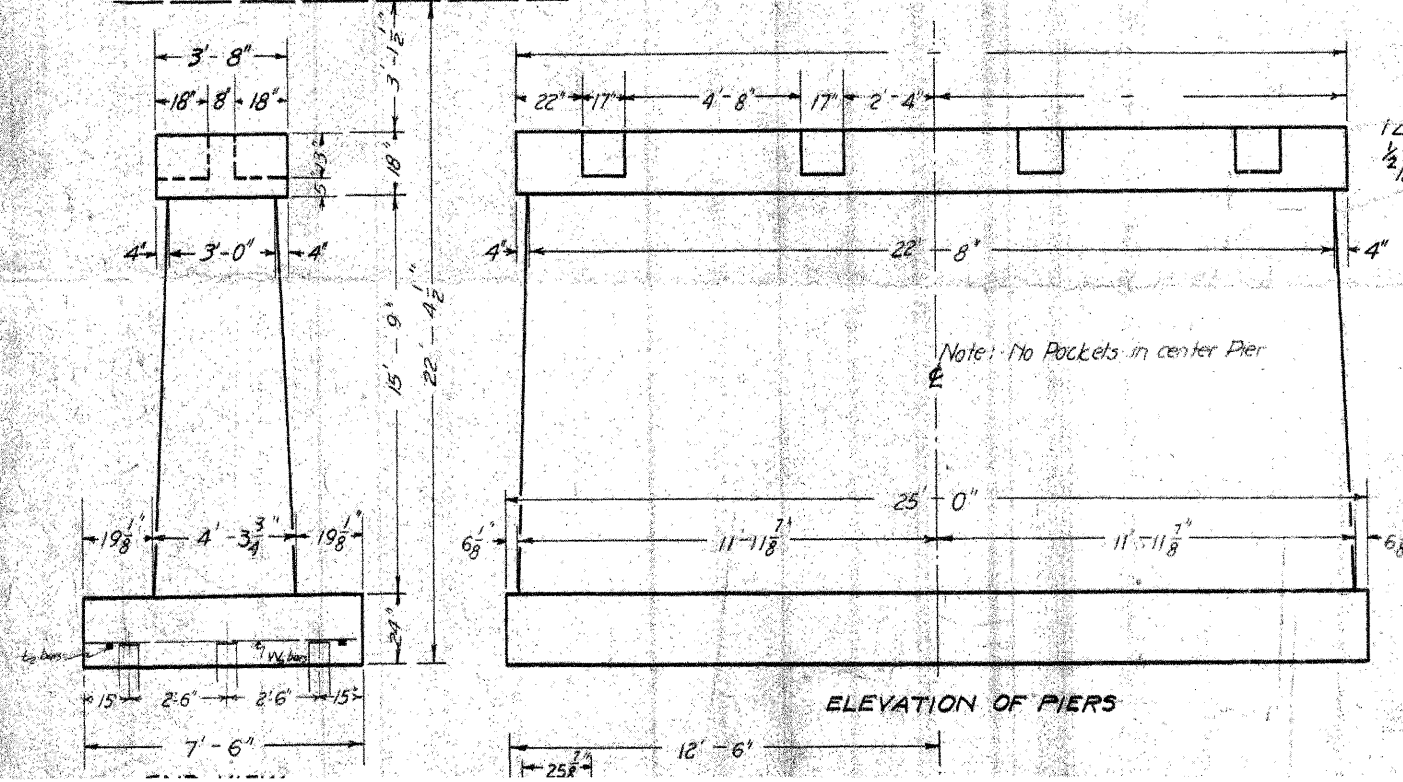
STATE OF ILLINOIS
DEPARTMENT OF PUBLIC WORKS & BUILDINGS
DIVISION OF HIGHWAYS

SHEET NO. 1
3 SHEETS

BENCH MARK: #20 Spike in elm left Sta. 214+00. Elev. 85.46
EXISTING STRUCTURE: 3 span Pony Truss 150' long
Rdy. 14'0" This structure to be removed by Bridge Contractor



Crown of finished Roadway Elev.



TOTAL BILL OF MATERIAL

Item	Super	Abuts.	Piers	Total
Class A Conc. - cu yds			198.2	198.2
Class X Conc. - cu yds	236.0	240.2		476.2
Reinforcing steel - lbs	12720	27870	1240	41830

USER NAME = dhaberling	DESIGNED - TJZ	REVISED - 11-8-11 S.D.S.
FILE NAME = D6_S08040460.dgn	CHECKED - SDS	REVISED -
PLOT DATE = 11/8/2011	DRAWN - DLH	REVISED -
PLOT TIME = 4:19:55 PM	CHECKED - TJZ/SDS	REVISED -

WHKS & CO.
ENGINEERING

7018 KINGSMILL CT.,
SPRINGFIELD, IL
(217) 483-9457
DESIGN FIRM #184001036

STATE OF ILLINOIS
DEPARTMENT OF TRANSPORTATION

EXISTING PLANS

SHEET NO. OF SHEETS

F.A.S. RTE. 556	SECTION 08-00119-04-BR	COUNTY SANGAMON	TOTAL SHEETS 28	SHEET NO. 28
ILLINOIS FED. AID PROJECT			CONTRACT NO. 93556	