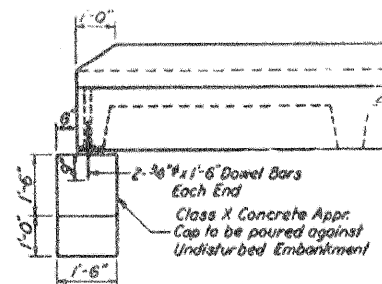
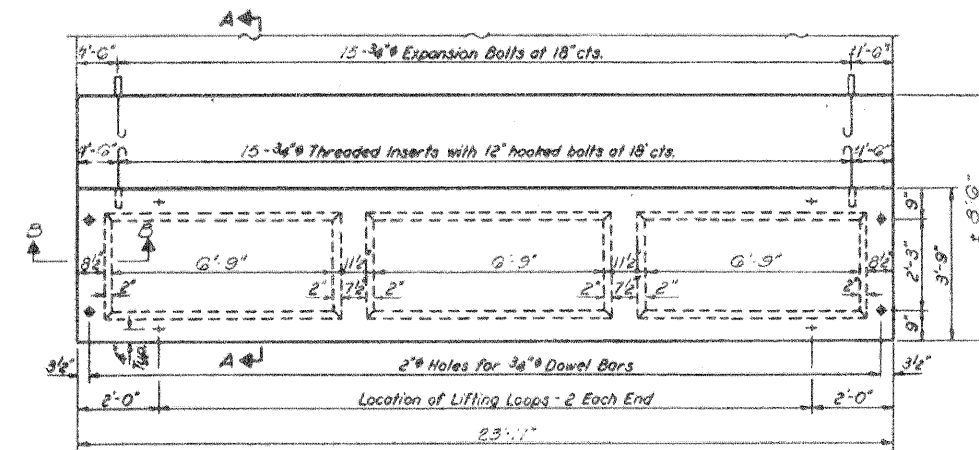


STATE OF ILLINOIS  
DEPARTMENT OF TRANSPORTATION  
DIVISION OF HIGHWAYS

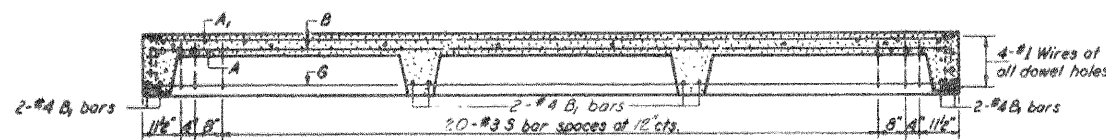
PROJECT NO.	SECTION	COUNTY	TOTAL SHEETS	SHEET NO.
556	08-00119-04-BR	SANGAMON	33	7



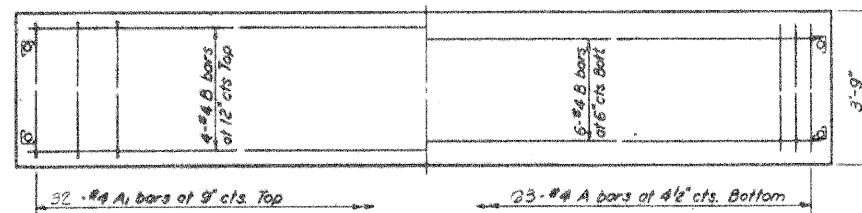
SECTION B-B



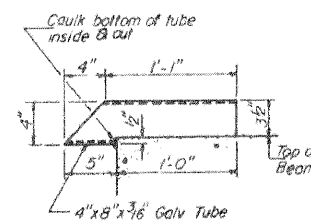
PARTIAL PLAN OF APPROACH  
For location of rail post inserts  
See Sheet #5



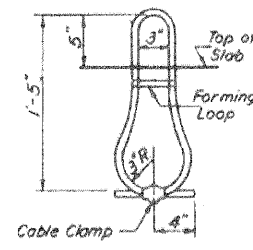
LONGITUDINAL SECTION



SLAB REINFORCEMENT

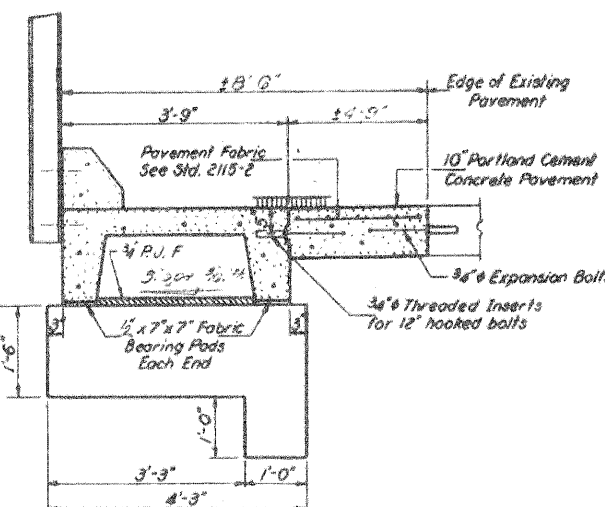


DRAIN DETAIL

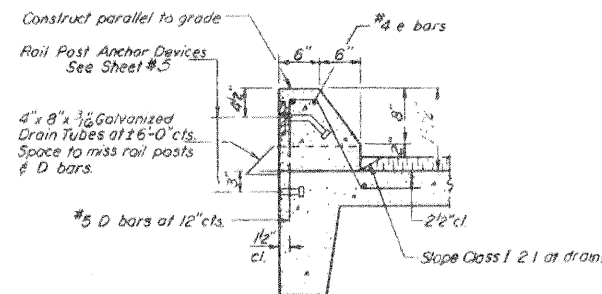


LIFTING LOOP DETAIL

W. Appn. Elev 549.50  
E. Appn. Elev 549.65

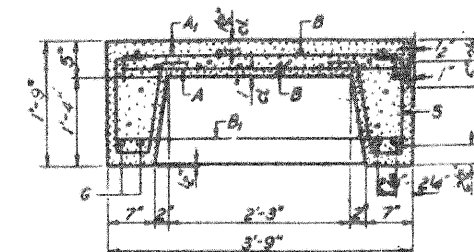


SECTION A-A



SECTION THRU CURB

Curbs shall be poured in the field.  
Class X Concrete & e bars in curbs  
are billed on Sheet #5

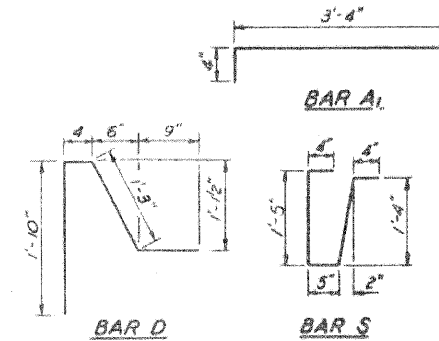


SECTION THRU PRECAST UNIT

BAR LIST - ONE UNIT

Reinforcement to be cast into slab

Bar	No	Size	Length	Shape
A	32	#4	3'-3"	—
A1	32	#4	4'-0"	—
B	10	#4	2'-6"	—
B1	8	#4	3'-6"	—
D	23	#5	4'-2"	—
E	4	#10	2'-0"	—
S	30	#8	3'-10"	—



NOTES

Unless otherwise approved by the Engineer, lifting loops shall be 1/2", 6x19 class wire rope with fiber core and shall have a minimum ultimate strength of 18,700 lbs. Loops shall be burned off after slab has been erected. Holes shall be drilled and anchor dowels grouted in place. Cost of reinforcement and accessories cast into the slab unit, bearing pads, furnishing, drilling for, placing and grouting anchor dowels and #5 hooked bolts is included in Unit bid price for "Precast Concrete Bridge Slab." The Precast Concrete Bridge Slab shall be erected and aligned with the exterior face of the exterior Deck Beam after Deck Beams are in final position.

BILL OF MATERIAL

Item	Unit	Quantity
Precast Concrete Bridge Slab	Sq Ft	35.0
Portland Cement Concrete Pavement (10")	Sq Yds	5.1
Pavement Fabric	Sq Yds	5.1
Expansion Bolts 3/8" Each	Each	60
Class X Concrete	Cu Yds	1.6

STRESSES

f'c = 4,500 psi  
f'c = 4,800 psi  
f's = 20,000 psi  
n = 8

LOADING HS-20

APPROACH DETAILS  
F.A.S. RT. 556 SEC. 14 BR  
SANGAMON COUNTY  
STA. 212+90.00

DESIGNED	EXAMINED
CHECKED	APPROVED
DRAWN	
CHECKED	

W-AP-4, >20' Precast Appr. Unit (R.L.) (11-15-71)