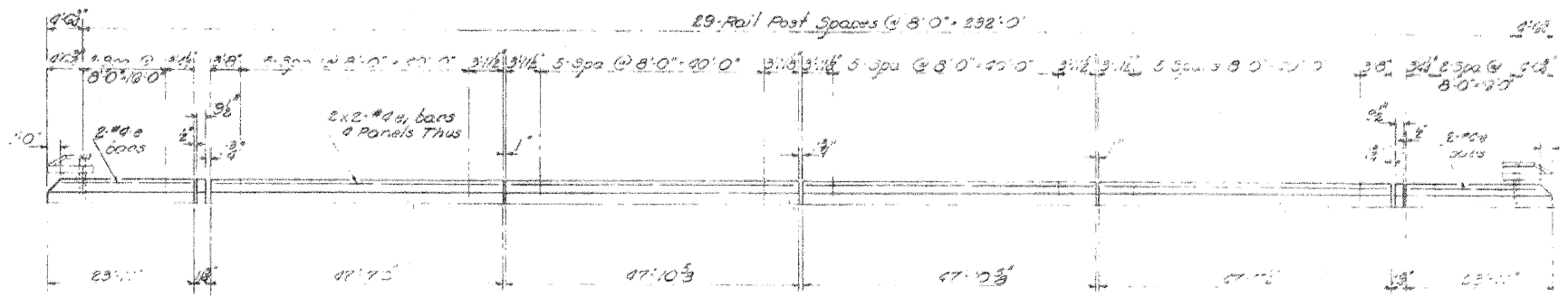


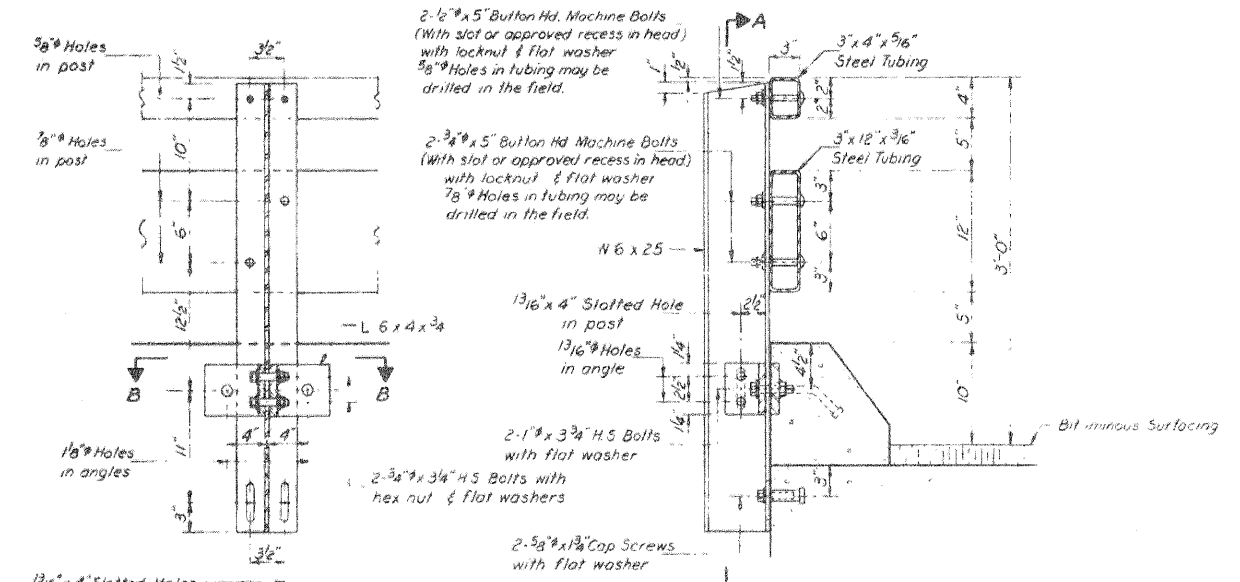
STATE OF ILLINOIS  
DEPARTMENT OF TRANSPORTATION  
DIVISION OF HIGHWAYS

REVISED	DATE	BY	REASON
1	11/8/2011	TJZ	ISSUED FOR CONSTRUCTION
2	11/8/2011	TJZ	ISSUED FOR CONSTRUCTION

SHEET NO. 5  
7 SHEETS

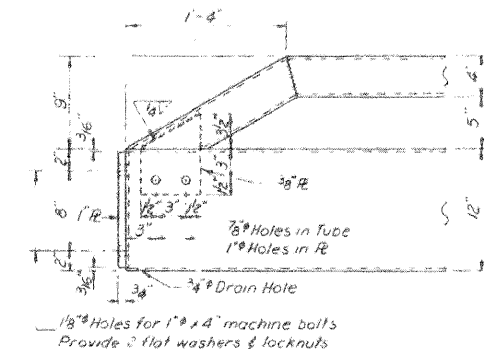


ELEVATION



SECTION A-A

SECTION AT RAIL POST



END OF RAIL DETAILS

**NOTES**

Follow structural steel tubing shall conform to the requirements of ASTM designation A-500 Grade B or A-501 Structural Steel Tubing.

All other steel shapes and plates shall conform to the requirements of ASTM designation A-36 except posts shall conform to ASTM A-570 M 185 Bolts, cap screws, and nuts shall conform to the requirement of ASTM designation A-307 except for high strength bolts, nuts and washers noted which shall conform to ASTM designation A-325.

All bolts, nuts, cap screws, washers and lock washers shall be galvanized in accordance with AASHTO designation M232.

All posts, railing, rail splices, anchor devices and angles shall be galvanized after shop fabrication in accordance with AASHTO designation M111 and A-385. Galvanized rail shall not be painted.

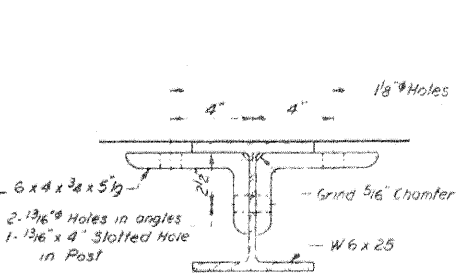
Railing shall be in accordance with Section 508 of the Standard Specifications, except as noted, and shall be paid for at the contract unit price per linear foot for STEEL RAILING, TYPE T.

All field drilled holes shall be coated with an approved zinc rich paint before erection.

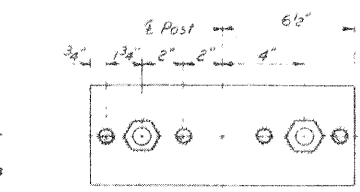
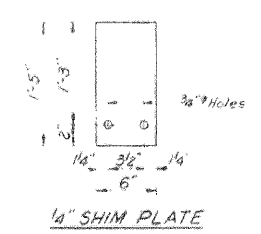
The lower portion of the post flange in contact with concrete shall receive two coats of asphalt paint conforming to Section 714.08 Type B or place 1/8" fabric bearing pad between the post and concrete.

The 3/4" high strength bolts used to connect the 6 x 4 x 3/4 angles to the post shall be tightened in accordance with Article 710.11 of the Standard Specifications. The 1" high strength bolts connecting the angles to the concrete shall be tightened to a snug fit and given an additional 1/8 turn.

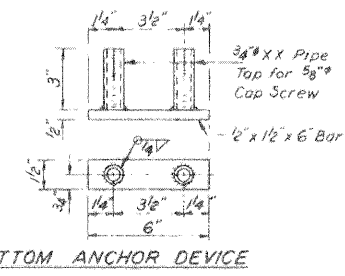
For multi-span bridges, sufficient 1/4" x 6" x 1.5" galvanized steel shims shall be provided to align rail between adjacent spans. Cost incidental to Steel Railing.



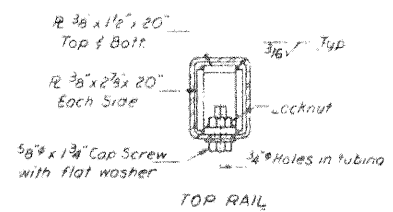
SECTION B-B



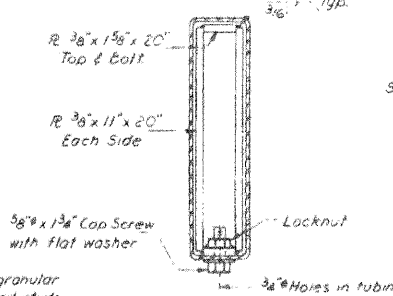
TOP ANCHOR DEVICE



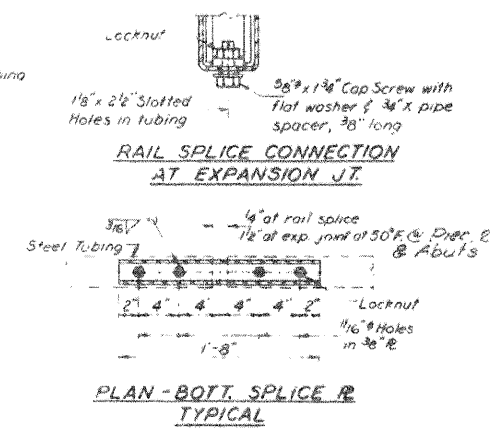
BOTTOM ANCHOR DEVICE



TOP RAIL



BOTTOM RAIL



RAIL SPLICE CONNECTION AT EXPANSION JUNCTION

PLAN - BOTT. SPLICE RAIL TYPICAL

**CURB & RAIL BILL OF MATERIAL**

Bar	No.	Size	Length	Shape
e	8	#4	22'-8"	
gr	32	#6	24'-6"	
Reinforcement Bars			Lbs	@80
Class X Concrete			Cu Yds.	15.8
Steel Railing, Type T			Lin Ft.	432

**TYPE T STEEL RAILING**  
F.A.S. RT 550 SEC. 14 BR  
SANGAMON COUNTY  
STA. 212+90.00

DESIGNED: TJZ  
CHECKED: SDS  
DRAWN: DLH  
CHECKED: TJZ/SDS

EXAMINED: Richard H. Holterman  
PASSED: No. 1000000000

Aug. 11 1072

R-24 (12-10-71) 19'-0" Maximum Post Spacing)

add 'at 22' (Abuts.)