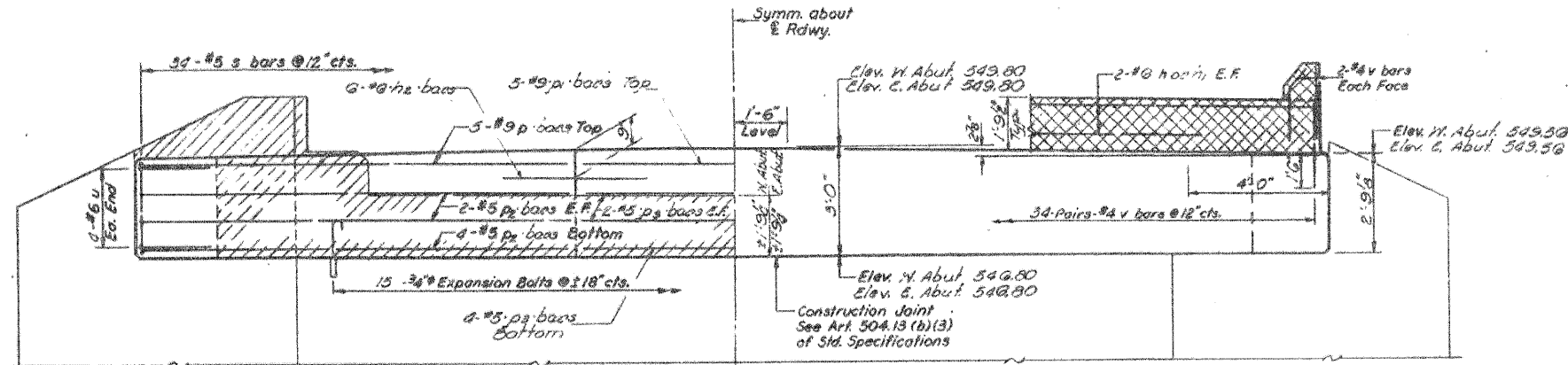


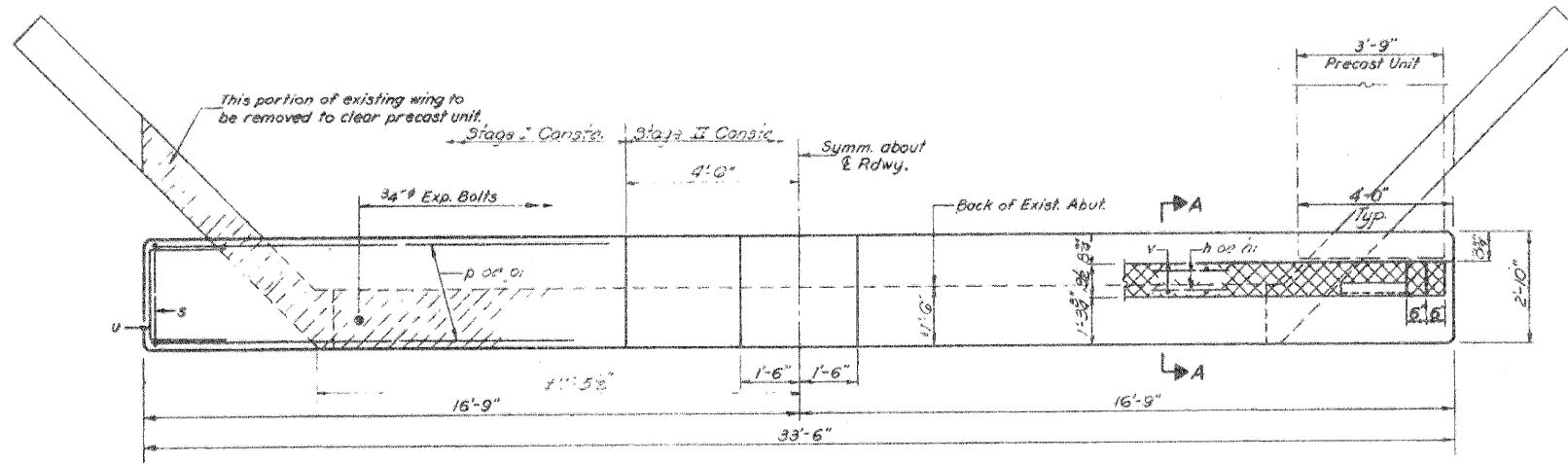
STATE OF ILLINOIS
DEPARTMENT OF TRANSPORTATION
DIVISION OF HIGHWAYS

PROJECT NO.	SECTION	COUNTY	TOTAL SHEETS	SHEET NO.	SHEET TITLE
1-11-556	14BR	SANGAMON	12	11	7 ABUTMENTS



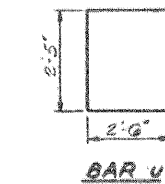
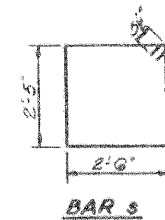
ELEVATION

See sheet #7 for temporary support of Abut. Cantilever during Stage I Const.



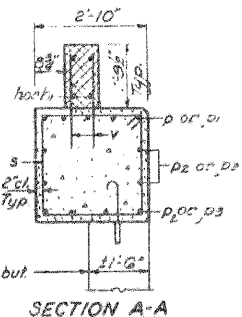
PLAN

NOTES:
Hatched area indicates Concrete Removal. Reinforcement extending into removed area shall be cleaned and incorporated into the new construction.
Cross hatched area shall be poured after beams are in place.
Expansion bolts shall be anchored in sound concrete. All edges shall have standard 3/4" chamfers except as noted.



TWO ABUTMENTS
BILL OF MATERIAL

Bar	No.	Size	Length	Shape
h	6	#6	11'-5"	---
h1	8	#6	20'-3"	---
h2	12	#6	4'-0"	---
p	10	#9	12'-0"	---
p1	10	#9	21'-0"	---
p2	10	#9	2'-0"	---
s	60	#5	0'-9"	PT
u	10	#6	7'-3"	E
v	152	#4	3'-0"	---
Class II Concrete				Cu Wt. 23.9
Reinforcement Bars				Lbs. 3580
Expansion Bolts 3/8" Each				50
Concrete Removal				Cu Wt. 9



Bars shall conform to the requirements of A.S.T.M. A-63 or A-67 except the minimum yield strength shall not be less than 33,000 p.s.i. and not more than 43,000 p.s.i.

DESIGNED	TJZ
CHECKED	SDS
DRAWN	J. SCHNEIDER
CHECKED	TJZ/SDS

EXAMINED
PASSED
DESIGNED
CHECKED

WHKS & CO.
ENGINEERING
7018 KINGSMILL CT.,
SPRINGFIELD, IL
(217) 483-9457
DESIGN FIRM #184001038

STATE OF ILLINOIS
DEPARTMENT OF TRANSPORTATION

EXISTING PLANS

SHEET NO. OF SHEETS

F.A.S. RTE.	SECTION	COUNTY	TOTAL SHEETS	SHEET NO.
556	08-00119-04-BR	SANGAMON	12	37
				CONTRACT NO. 93556

ILLINOIS FED. AID PROJECT

W-A-2 (11-15-77) Expansion