

STATE OF ILLINOIS
DEPARTMENT OF TRANSPORTATION
DIVISION OF HIGHWAYS

**PROPOSED
HIGHWAY BRIDGE PROGRAM**

FAS ROUTE 556 - CH 4 (BUCKHART ROAD)
SECTION 08-00119-04-BR
PROJECT BRS-0556(311)
BRIDGE REPLACEMENT
SANGAMON COUNTY

C-96-202-12

F.A.S. RTE.	SECTION	COUNTY	TOTAL SHEETS	SHEET NO.
556	08-00119-04-BR	SANGAMON	23	1
		ILLINOIS	CONTRACT NO. 93556	



LOCATION OF SECTION INDICATED THUS:

FUNCTIONAL CLASSIFICATION: MAJOR COLLECTOR (NON-URBAN)
DESIGN SPEED = 50 MPH
2031 ADT = 2985

INDEX OF SHEETS

- 1 COVER SHEET
- 2 GENERAL NOTES AND SUMMARY OF QUANTITIES
- 3 TYPICAL SECTIONS AND ENTRANCE DETAILS
- 4-5 PLAN AND PROFILE SHEETS
- 6-7 EROSION CONTROL SHEETS
- 8-18 STRUCTURE PLANS
- 19-25 CROSS SECTIONS

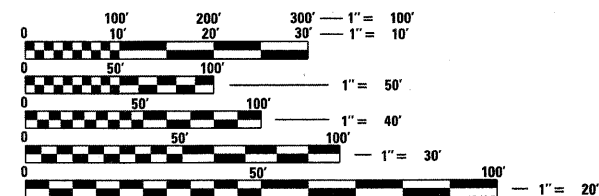
HIGHWAY STANDARDS

- 000001-06 STANDARD SYMBOLS, ABBREVIATIONS AND PATTERNS
- 280001-05 TEMPORARY EROSION CONTROL SYSTEMS
- 515001-03 NAME PLATE FOR BRIDGES
- 630001-09 STEEL PLATE BEAM GUARDRAIL
- 630301-05 SHOULDER WIDENING FOR TYPE I (SPECIAL) GUARDRAIL TERMINALS
- 631032-06 TRAFFIC BARRIER TERMINAL, TYPE 6A
- 635006-03 REFLECTOR AND TERMINAL MARKER PLACEMENT
- 701306-03 LANE CLOSURE, 2L, 2W SLOW MOVING OPERATIONS DAY ONLY, FOR SPEEDS ≥ 45 MPH
- 701901-01 TRAFFIC CONTROL DEVICES
- 780001-02 TYPICAL PAVEMENT MARKINGS
- BLR21- 8 TYPICAL APPLICATION OF TRAFFIC CONTROL DEVICES FOR CONSTRUCTION ON RURAL LOCAL HIGHWAYS
- BLR24-2 MAILBOX TURNOUT FOR LOCAL ROADS
- 701306-03 LANE CLOSURE, 2L 2W, SLOW MOVING OPERATIONS - DAY ONLY, FOR SPEEDS ≥ 45 MPH

UTILITY COMPANIES

POWER COMPANY
AMEREN
MR. GEORGE SOMMER
825 N. McARTHUR BLVD.
SPRINGFIELD, IL 62702
PH (217) 753-6458

TELEPHONE COMPANY
ATA&T
MR. MARK MILLER
529 S. 7TH STREET
FLOOR 3B
SPRINGFIELD, IL 62703
PH (217) 789-8367



FULL SIZE PLANS HAVE BEEN PREPARED USING STANDARD ENGINEERING SCALES. REDUCED SIZED PLANS WILL NOT CONFORM TO STANDARD SCALES. IN MAKING MEASUREMENTS ON REDUCED PLANS, THE ABOVE SCALES MAY BE USED.

J.U.L.I.E.
JOINT UTILITY LOCATION INFORMATION FOR EXCAVATION
1-800-892-0123
OR 811

PROJECT ENGINEER: JAMES A. COLBROOK JR., P.E.
PROJECT MANAGER: SCOTT D. SANFORD, S.E., P.E.

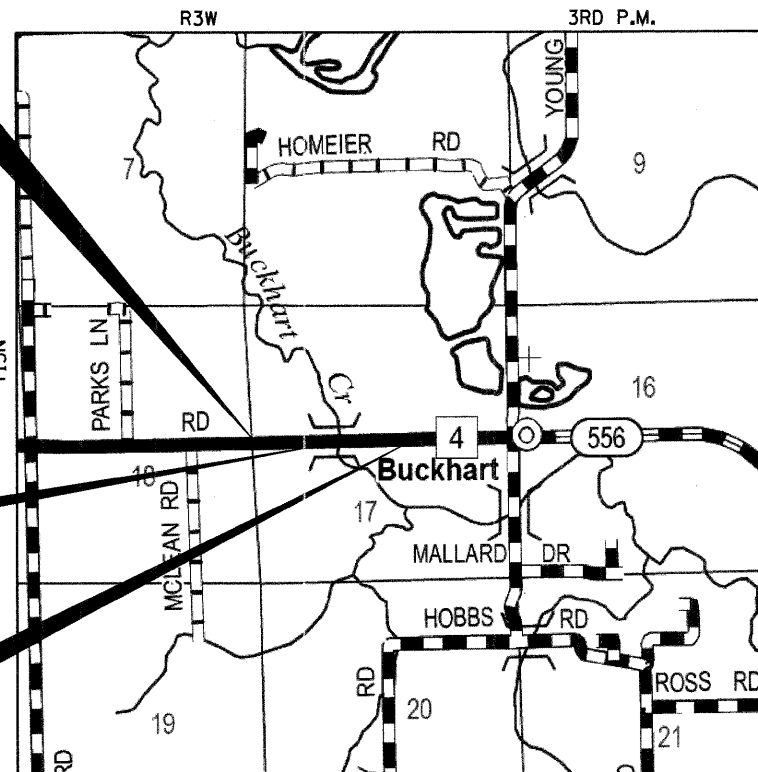
WHKS & CO.
ENGINEERING
7018 KINGSMILL CT.,
SPRINGFIELD, IL
(217) 483-9457
DESIGN FIRM #184001036

CONTRACT NO. 93556

**BEGIN IMPROVEMENT
STA. 97 + 17.00**

**BRIDGE REPLACEMENT
STA. 99 + 96.00
EXIST SN 084-0080
PROP SN 084-0480**

**END IMPROVEMENT
STA. 103 + 63.00**



LOCATION MAP SCALE
LOCATION MAP

TOTAL LENGTH = 646.00 FEET (0.122 MI)
NET LENGTH = 646.00 FEET (0.122 MI)

BRIDGE REPLACEMENT WITH A 3-SPAN PRECAST PRESTRESSED CONCRETE DECK BEAM BRIDGE ON CONCRETE PILE BENT ABUTMENTS AND PIERS, 2" (MIN.) HMA WEARING SURFACE, 227'-9" BACK TO BACK OF ABUTMENTS, 33'-0" FACE TO FACE OF RAIL AND 0° SKEW.



Expires: 11/30/2011

APPROVED Sept. 8 20 11
Tom C. Zedler
COUNTY ENGINEER

PASSED Tamara H. Horton 20 11
September 15, 2011
DISTRICT SIX ENGINEER OF
LOCAL ROADS AND STREETS

Ron Dechambeau 9-15-11
DISTRICT SIX ENGINEER OF
CONSTRUCTION

Released For
Bid Based on
Limited Review September 15 20 11
Roger L. Siskel
DEPUTY DIRECTOR OF HIGHWAYS
REGION FOUR ENGINEER
STATE OF ILLINOIS
DEPARTMENT OF TRANSPORTATION

**PRINTED BY THE AUTHORITY
OF THE STATE OF ILLINOIS**