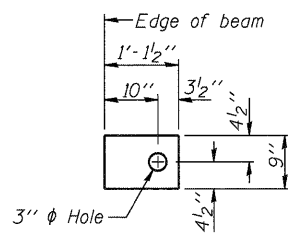


**FABRIC BEARING PAD**  
(Interior)

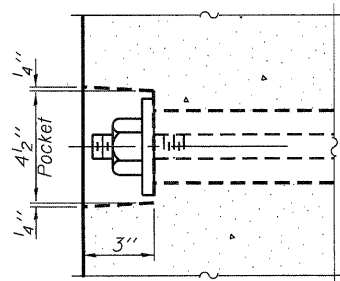


**FABRIC BEARING PAD**  
(Exterior)

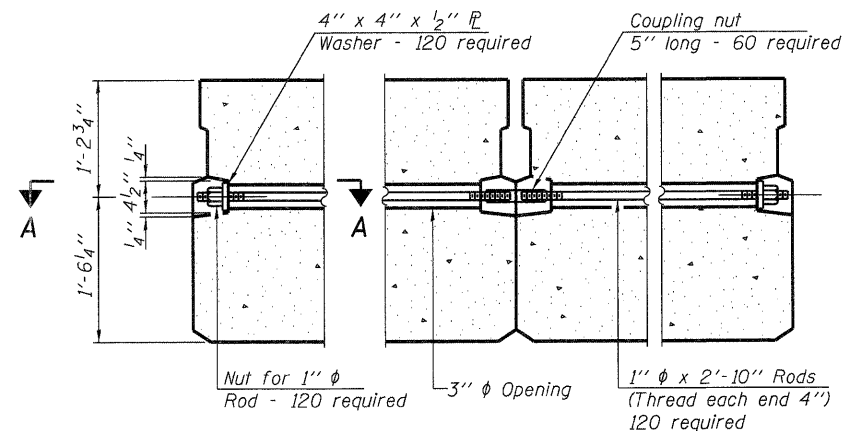
**FIXED**

Notes:

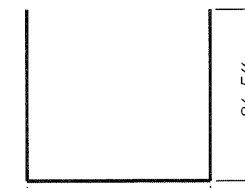
All bearing pads shall be 1" thick.  
Omit holes when using expansion bearings.  
Expansion bearing pad shall be bonded to the substructure.



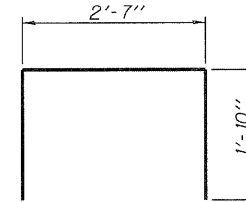
**SECTION A-A**



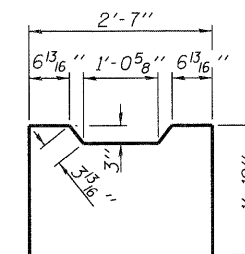
**TYPICAL TRANSVERSE TIE ASSEMBLY**



**BAR S(E)**

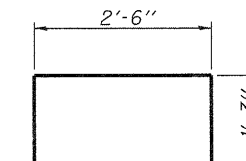


**BAR S1(E)**

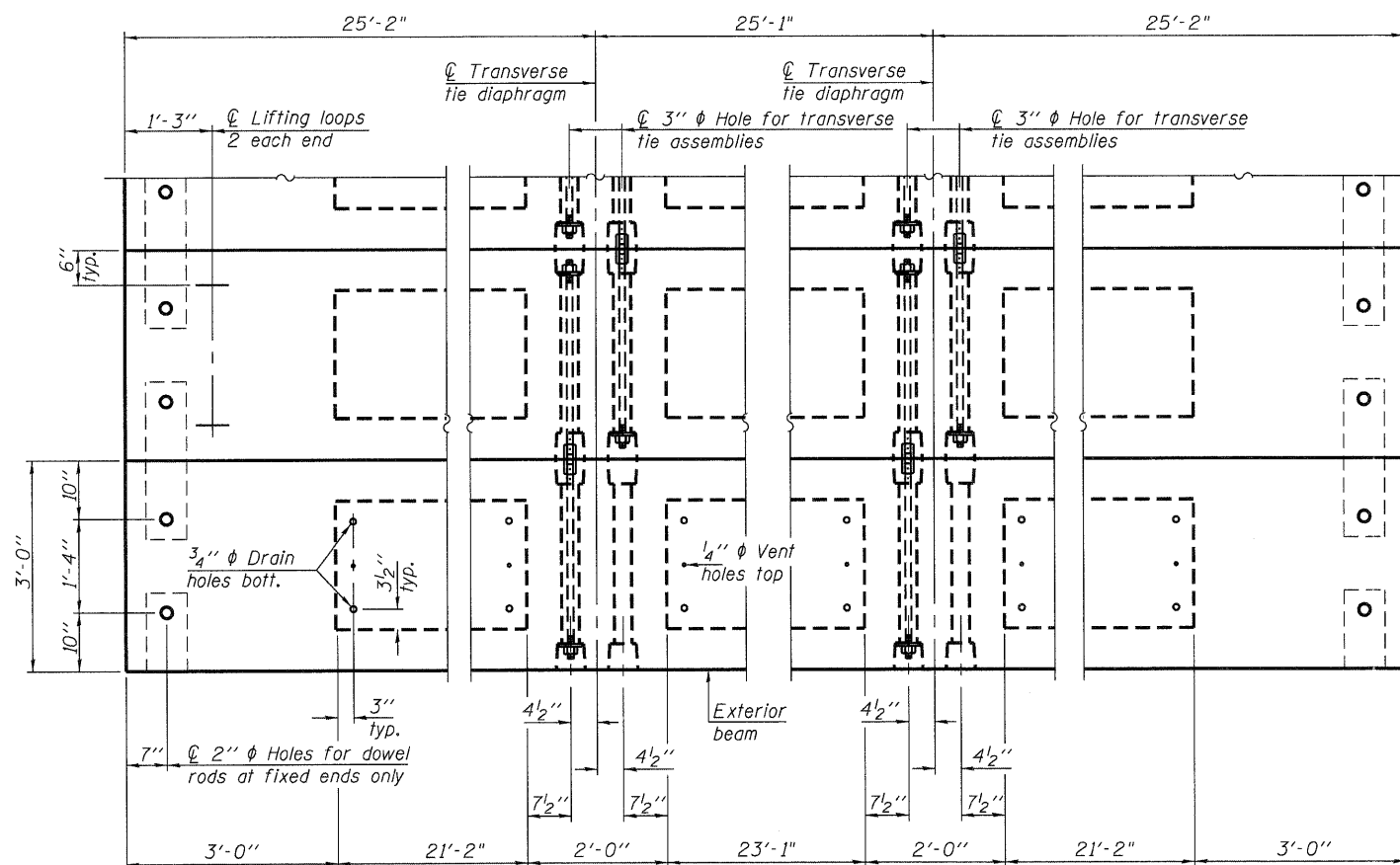


**BAR U(E)**

**BAR S2(E)**



**BAR U1(E)**



**PLAN VIEW**  
(Typ. all spans)

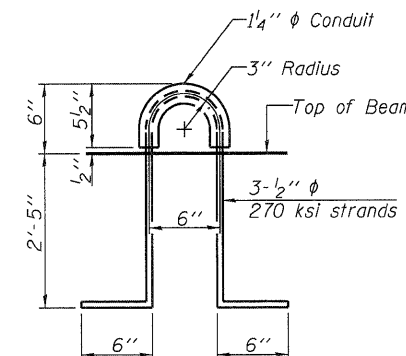
Note:

Connect beams in pairs with the transverse tie configuration shown.

**NOTES**

Prestressing steel shall be uncoated high strength, low relaxation 7-wire strand, Grade 270. The nominal diameter shall be 1/2" and the nominal cross-sectional area shall be 0.153 sq. in. The 1" diameter rods in the transverse tie assembly shall be tightened to a snug fit and the threads set. Pockets on exterior faces of bridge shall be filled with grout after transverse tie assembly is in place. Reinforcement bars shall conform to ASTM A 706, Grade 60. Two 1/8" fabric adjusting shims of the dimensions of the exterior bearing pad shall be provided for each bearing pad location. A minimum 2 1/2" diameter lifting pin shall be used to engage the lifting loops during handling. Corrosion Inhibitor, per Article 1020.05(b)(12) and 1021.06 of the Standard Specifications, shall be used in the concrete for precast prestressed concrete deck beams. Compressive strength of prestressed concrete, f'c, shall be 6000 psi. Compressive strength of prestressed concrete at release, f'ci, shall be 5000 psi.

**LIFTING LOOP DETAIL**



**BILL OF MATERIAL**

Precast Prestressed Conc. Deck Bms. (33" depth)	Sq. Ft.	7,467
-------------------------------------------------	---------	-------

PD-3336-0D 7-1-10

USER NAME = dheber.ling	DESIGNED - TJZ	REVISED -
FILE NAME = DB.SN0840480.dgn	CHECKED - SDS	REVISED -
PLDT DATE = 9/7/2011	DRAWN - DLH	REVISED -
PLDT TIME = 11:11:19 AM	CHECKED - TJZ/SDS	REVISED -

**WHKS & CO.**  
ENGINEERING  
7018 KINGSMILL CT.,  
SPRINGFIELD, IL  
(217) 483-9457  
DESIGN FIRM #184001306

**STATE OF ILLINOIS**  
**DEPARTMENT OF TRANSPORTATION**

**PPC DECK BEAM DETAILS**  
**STRUCTURE NO. 084-0480**

SHEET NO. 3 OF 11 SHEETS

F.A.S. RTE.	SECTION	COUNTY	TOTAL SHEETS	SHEET NO.
556	08-00119-04-BR	SANGAMON	25	10
CONTRACT NO. 93556				
ILLINOIS FED. AID PROJECT				