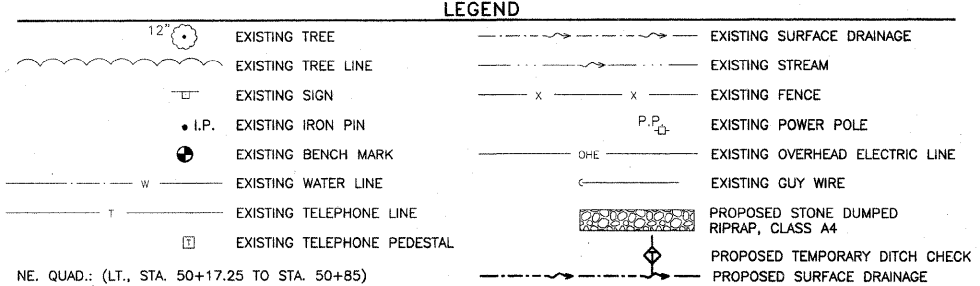


### HORIZONTAL CONTROL COORDINATES

POINT	LOCATION	N. COOR.	E. COOR.
HC#1 (IRON PIN)	1.21' LT., STA. 48+42.29	5002.52	4802.62
HC#2 (IRON PIN)	0.36' RT., STA. 51+42.29	5011.12	5102.49

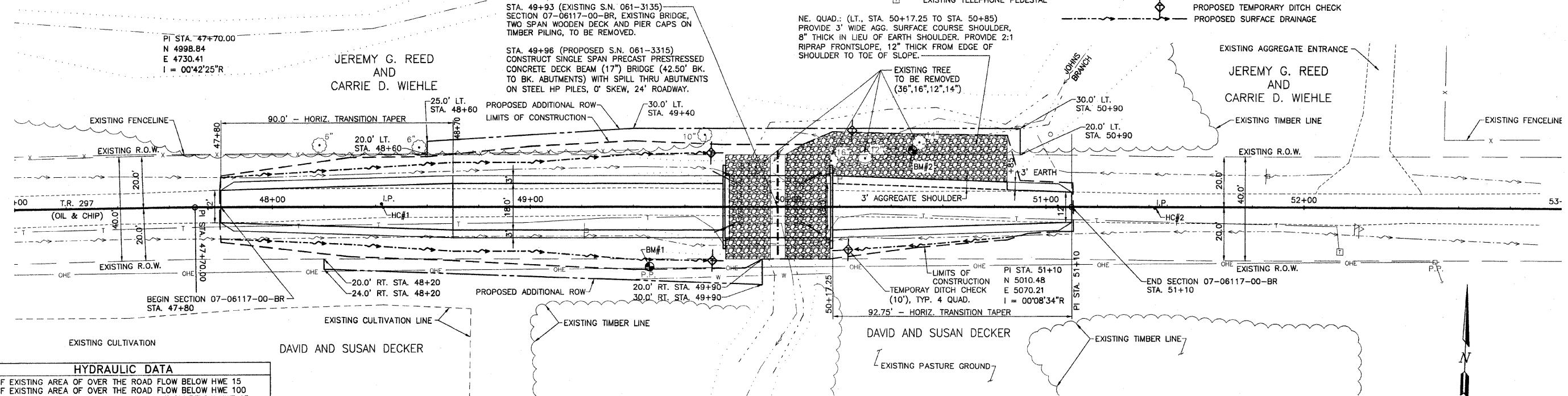
### BENCH MARK COORDINATES

POINT	LOCATION	ELEV.
BM#1 (R.R. SPIKE IN POWER POLE)	23.01' RT., STA. 49+46.26	453.53
BM#2 (R.R. SPIKE IN 14\"/>		



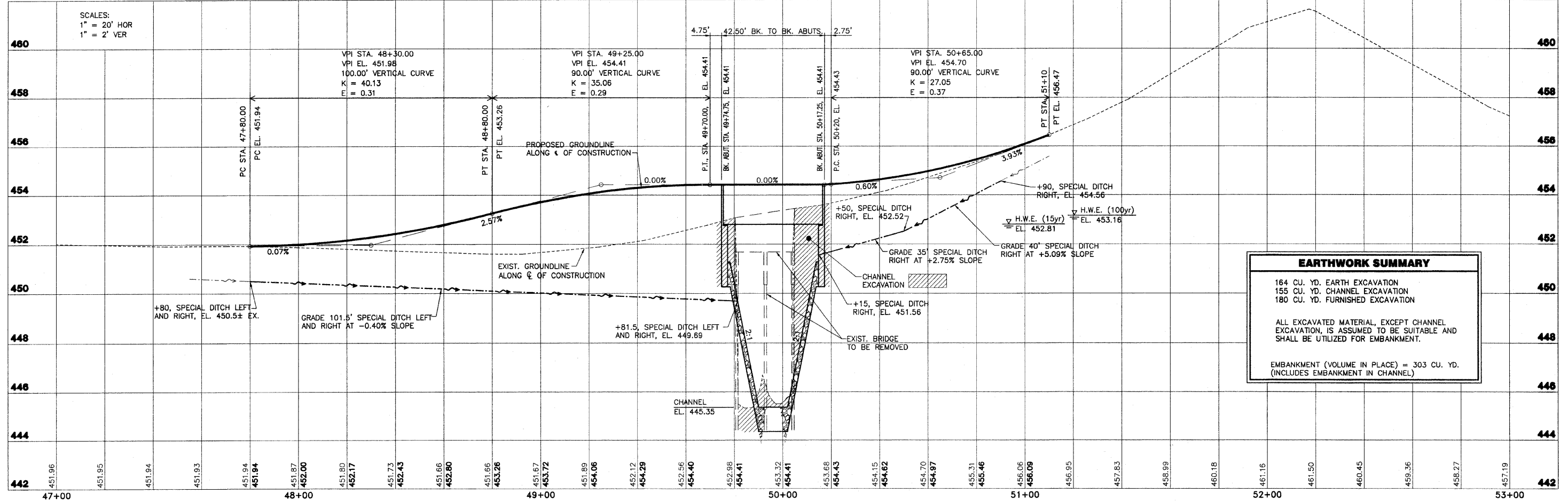
ROUTE NO.	SECTION	COUNTY	TOTAL SHEETS	SHEET NO.
T.R. 297	07-06117-00-BR	MARION	12	3

FEDERAL AID PROJECT ILLINOIS PROJECT CONTRACT NO. 97460



### HYDRAULIC DATA

323 SF	EXISTING AREA OF OVER THE ROAD FLOW BELOW HWE 15
453 SF	EXISTING AREA OF OVER THE ROAD FLOW BELOW HWE 100
192 SF	PROPOSED AREA OF OVER THE ROAD FLOW BELOW HWE 100
318 SF	PROPOSED AREA OF OVER THE ROAD FLOW BELOW HWE 15
120 SF	EXISTING BRIDGE OPENING BELOW HWE 15
120 SF	EXISTING BRIDGE OPENING BELOW HWE 100
198 SF	PROPOSED BRIDGE OPENING BELOW HWE 15
198 SF	PROPOSED BRIDGE OPENING BELOW HWE 100



### EARTHWORK SUMMARY

164 CU. YD.	EARTH EXCAVATION
155 CU. YD.	CHANNEL EXCAVATION
180 CU. YD.	FURNISHED EXCAVATION
ALL EXCAVATED MATERIAL, EXCEPT CHANNEL EXCAVATION, IS ASSUMED TO BE SUITABLE AND SHALL BE UTILIZED FOR EMBANKMENT.	
EMBANKMENT (VOLUME IN PLACE) = 303 CU. YD. (INCLUDES EMBANKMENT IN CHANNEL)	