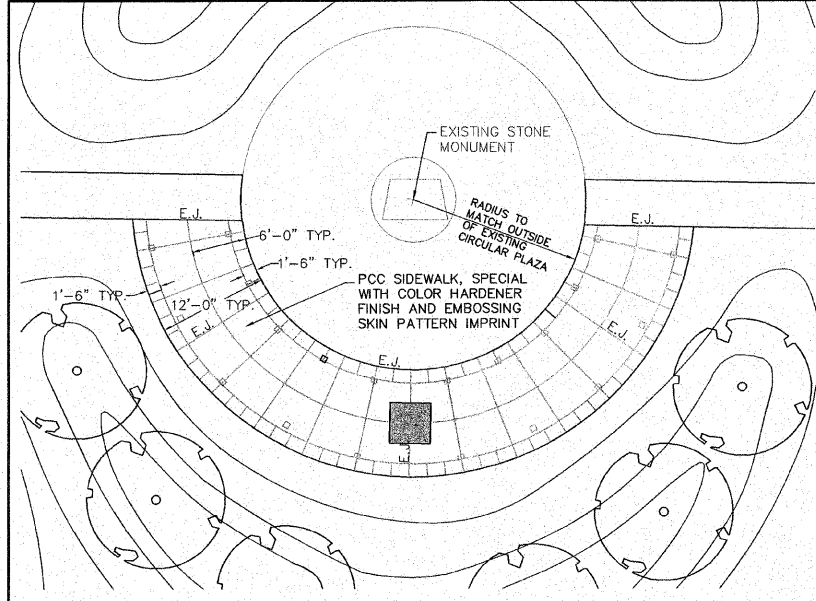
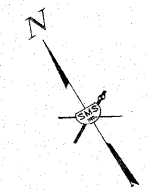
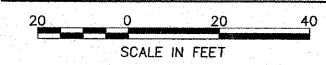
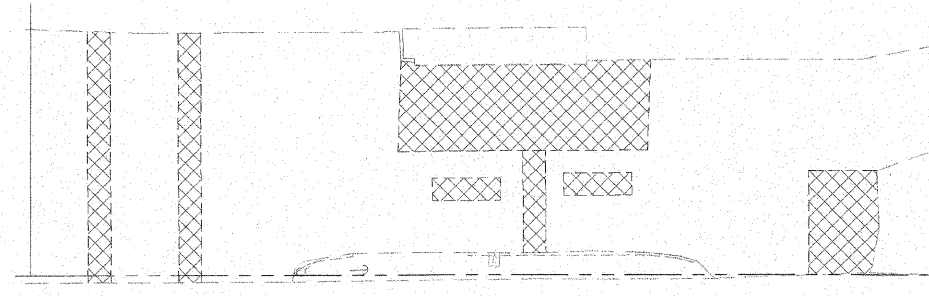


SECTION	COUNTY	TOTAL SHEETS	SHEET NO.
08-00021-00-PK	MADISON	12	5
CONTRACT NO. 97473			



PERGOLA PAVEMENT DETAIL
1"=10'

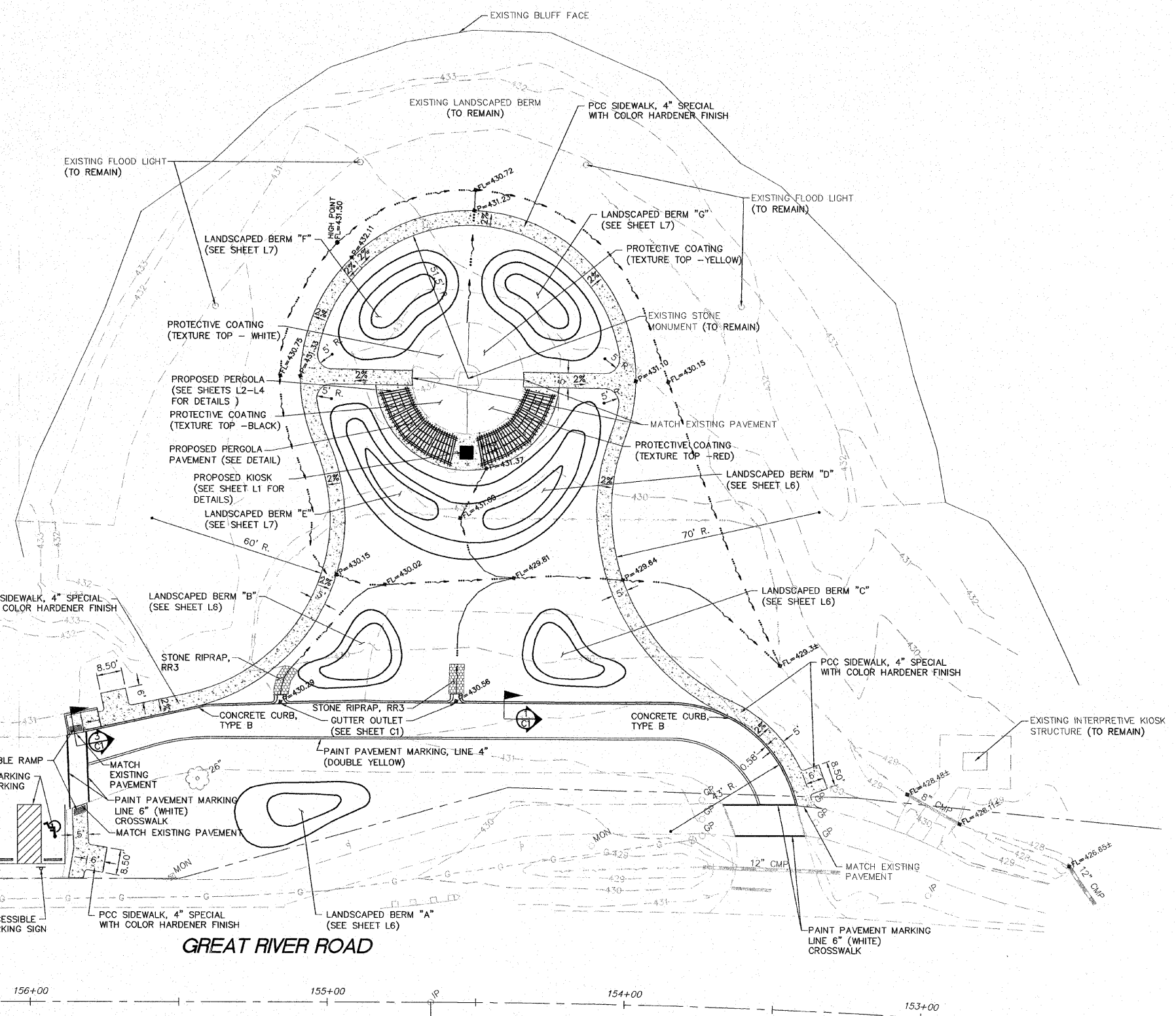
NOTE:
LAYOUT JOINTS IN A SYMMETRICAL, RADIAL PATTERN AS INDICATED. PROVIDE PRE-FORMED EXPANSION JOINT FILLER BOARD AND JOINT SEALANT COLOR-MATCHED TO CONCRETE PAVEMENT COLOR AT EXPANSION JOINTS. PAY ITEM FOR PERGOLA PAVEMENT IS PORTLAND CEMENT CONCRETE, SPECIAL AND SHALL INCLUDE ALL CONCRETE, EMBOSSING, JOINTS, PERGOLA EMBEDS, ETC.



CLASS D PATCHES SHOWN THUS

PAVEMENT PATCHING
1"=20'

NOTE: ALL PAVEMENT PATCHING TO BE DONE BY OTHERS AND IS NOT INCLUDED IN THIS CONTRACT. ALL PATCHING WILL BE COMPLETED PRIOR TO PAVEMENT MARKING.



GREAT RIVER ROAD

REVISIONS

SMS Sheppard, Morgan & Schwaab, Inc.
CONSULTING ENGINEERS AND LAND SURVEYORS
218 Walnut Street, P.O. Box E, Alton, IL 62002, 618/465-9755 E-mail: ms@smsengineers.com
40 Central Expressway, Suite 200, Geneva, NY 14456 618/777-0700 E-mail: ms@smsengineers.com
DESIGN FIRM # 184-000992

**IMPROVEMENT PLANS FOR HOFFMAN GARDENS
VILLAGE OF GODFREY, ILLINOIS
PROPOSED SITE PLAN**

DWG. NO.	HOFFMAN PROPOSED SITE DWG.
REF. BK.	PG.
JOB NO.	437560
DSN. BY:	SJW/DDT
DWN. BY:	BCS
CHK. BY:	SJW
DATE:	MAY, 2011
SCALE:	1"=20'
SHEET	C4 OF 12

S:\land projects\GODFREY PAR 437560\HOFFMAN GARDENS\HOFFMAN PROPOSED SITE.dwg, 01/02/2011 2:44:13 PM, jshpears, 120