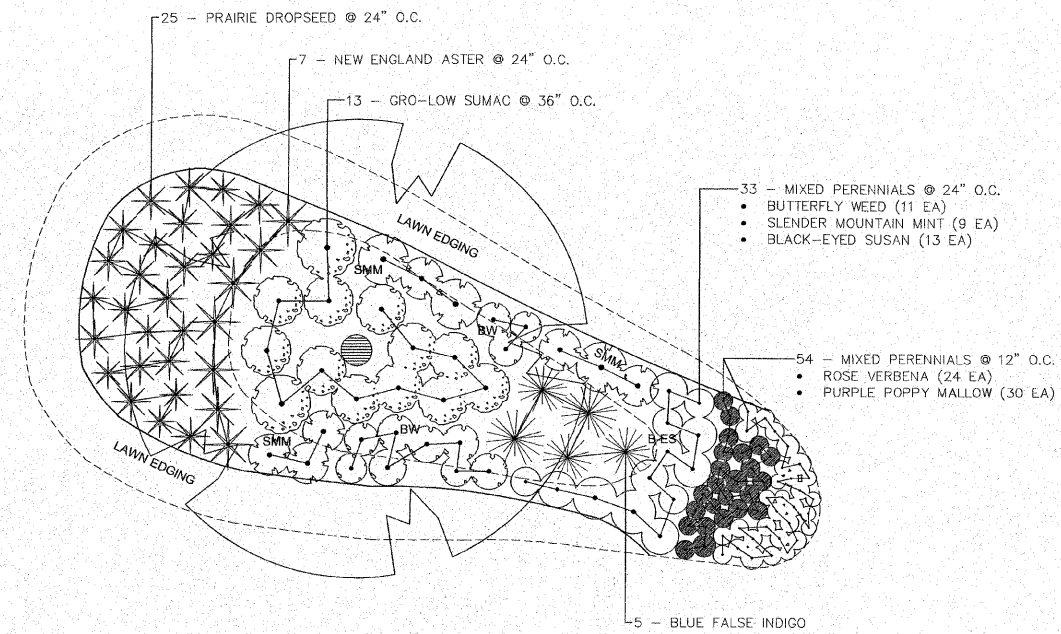
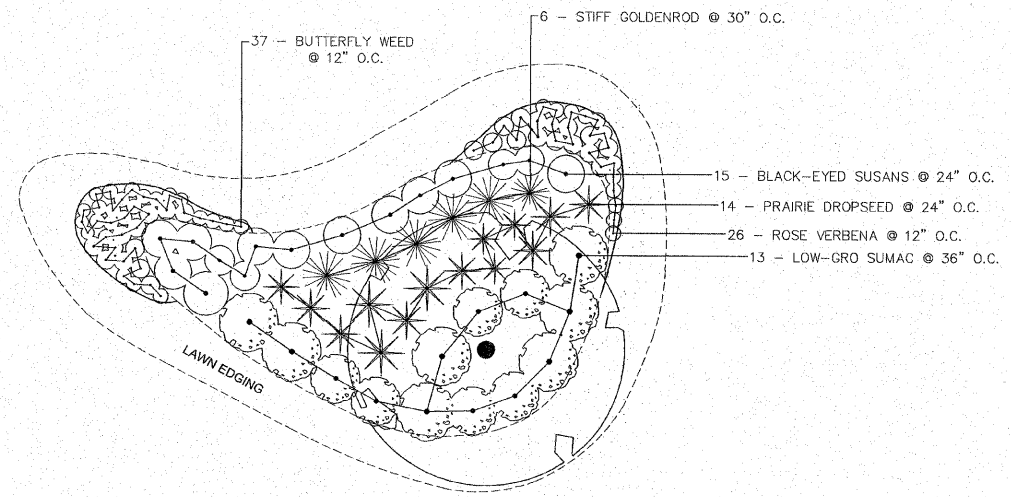


SECTION	COUNTY	TOTAL SHEETS	SHEET NO.
08-00021-00-PK	MADISON	12	11
CONTRACT NO. 97473			



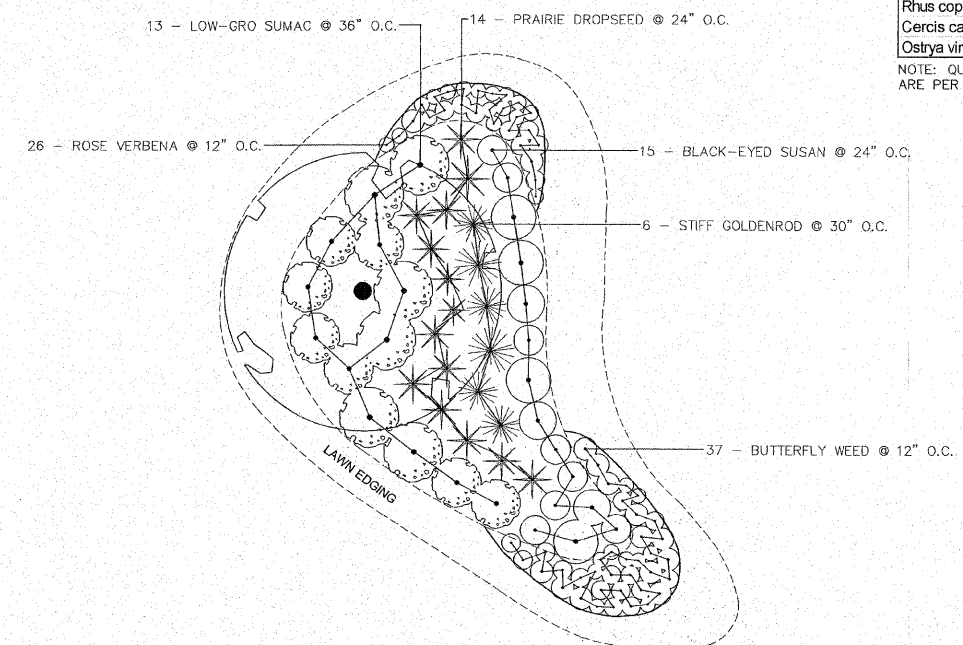
1
L6
DETAIL PLAN - LANDSCAPED BERM "A"
NTS



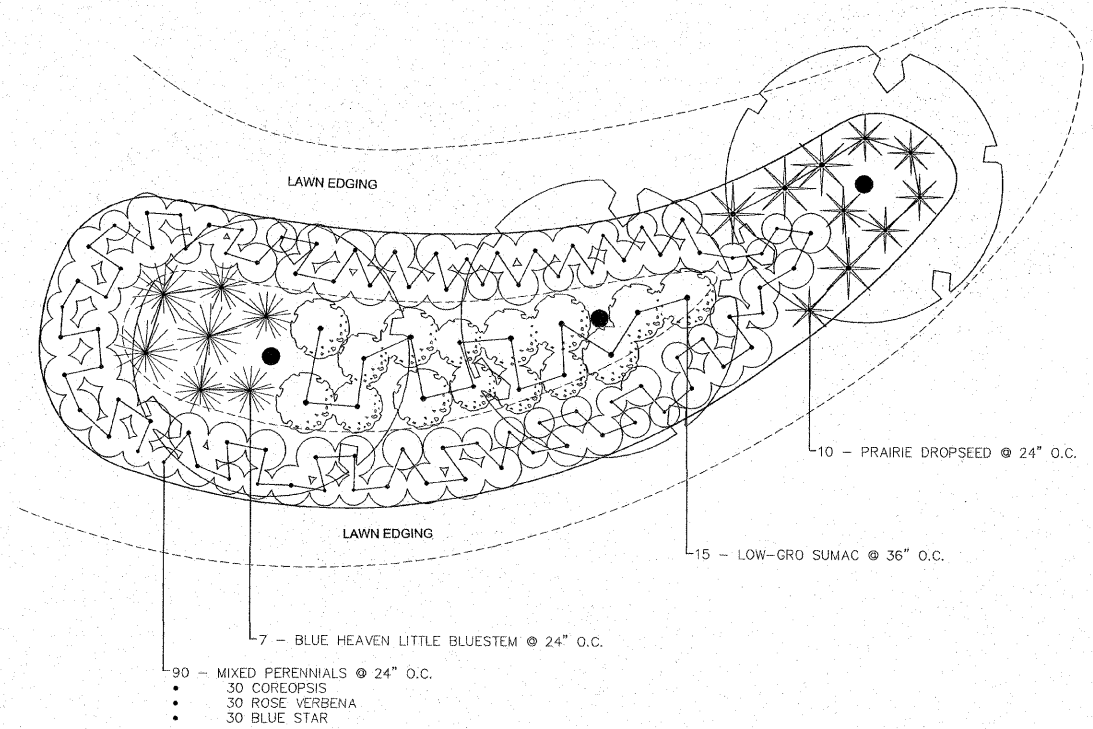
2
L6
DETAIL PLAN - LANDSCAPED BERM "B"
NTS

Plant Name	Size	Qty.
PERENNIALS - 4.5" (1 quart square)		
<i>Asclepias tuberosa</i> (Butterfly Milkweed)	4.5" (1qt)	105
<i>Aster novae-angliae</i> (New England Aster)[GN]	4.5" (1qt)	27
<i>Baptisia australis</i> (Blue False Indigo)	4.5" (1qt)	25
<i>Callirhoe involucrata</i> (Purple Poppy Mallow)	4.5" (1qt)	110
<i>Coreopsis lanceolata</i> (Lance-leaf Coreopsis)	4.5" (1qt)	60
<i>Echinacea paradoxa</i> (Yellow Coneflower)	4.5" (1qt)	20
<i>Sporobolus heterolepis</i> (Prairie Dropseed Grass)	4.5" (1qt)	95
<i>Liatris scariosa</i> (Eastern Blazing Star)	4.5" (1qt)	12
<i>Oenothera macrocarpa-syn missouriensis</i> (Missouri Evening Primrose)	4.5" (1qt)	20
<i>Pycnanthemum tenuifolium</i> (Slender Mountain Mint)	4.5" (1qt)	29
<i>Rudbeckia missouriensis</i> (Missouri Black-eyed Susan)	4.5" (1qt)	43
<i>Solidago rigida</i> (Stiff Goldenrod)	4.5" (1qt)	12
<i>Verbena canadensis</i> (Rose Verbena)	4.5" (1qt)	156
PERENNIALS - 6" (#1 round/trade gallon)		
<i>Amsonia tabernaemontana</i> (Blue Star)	6" (#1)	60
<i>Schizachyrium s. Blue Heaven</i> (Little Bluestem grass) [PP17310]	6" (#1)	14
Trees & Shrubs - Trees B & B - Shrubs Container Grown		
<i>Rhus aromatica</i> (Low-Gro)	#2 Cont.	97
<i>Rhus copallina</i> var. <i>latifolia</i> 'Morton' (Prairie Flame) (Dwarf Winged Sumac)	#2 Cont.	6
<i>Cercis canadensis</i> (Eastern Redbud)	1-3/4" Cal.	6
<i>Ostrya virginiana</i> (Eastern Hop Hornbeam)	2" Cal.	3

NOTE: QUANTITIES FOR PERENNIALS SHOWN ABOVE ARE PER PLANT. 100 PLANTS = 1 UNIT QUANTITY



3
L6
DETAIL PLAN - LANDSCAPED BERM "C"
NTS



4
L6
DETAIL PLAN - LANDSCAPED BERM "D"
NTS

REVISIONS

PDS
PLANNING DESIGN STUDIO
727 North First Street, Suite 360
Saint Louis, Missouri, 63102
Phone (314) 241-3600

IMPROVEMENT PLANS FOR HOFFMAN GARDENS
VILLAGE OF GODFREY, ILLINOIS
PLANTING DETAILS "A"

DWG. NO.	HOFFMAN PLANTING DETAILS.DWG
REF. BK.	PG.
JOB NO.	437560
DSN. BY:	SJW/DDT
DWN. BY:	BCS
CHK. BY:	SJW
DATE:	MAY, 2011

SCALE: N.T.S.
SHEET L6 OF 12

S:\land_projects\GODFREY PAR (437560)\HOFFMAN GARDENS\Hoffman Planting Details.dwg, 01/02/2011 1:56:12 PM, dsjwps, 11