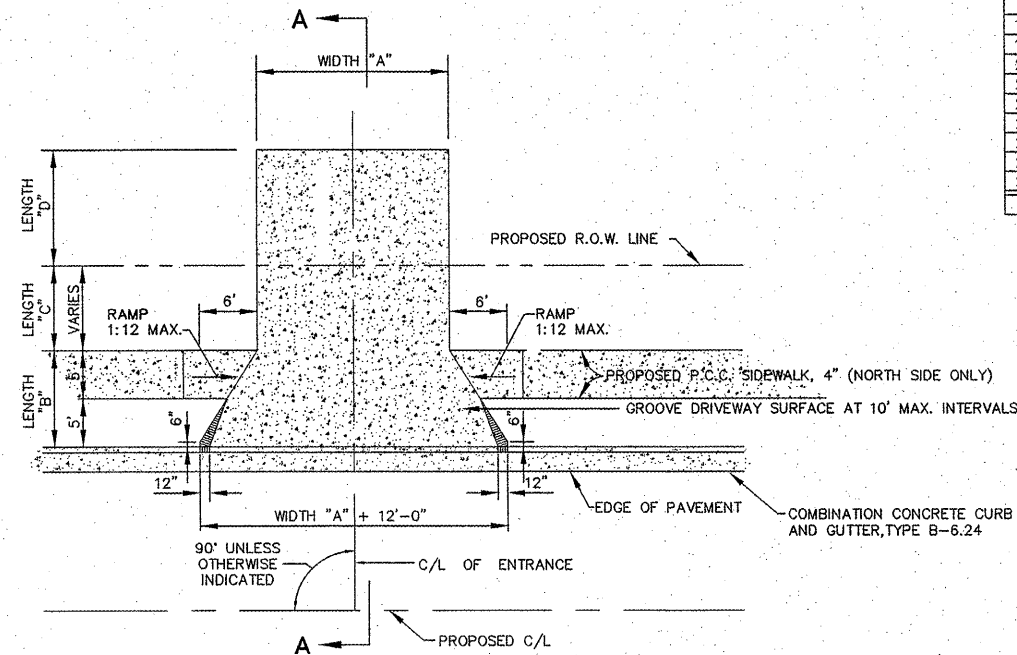


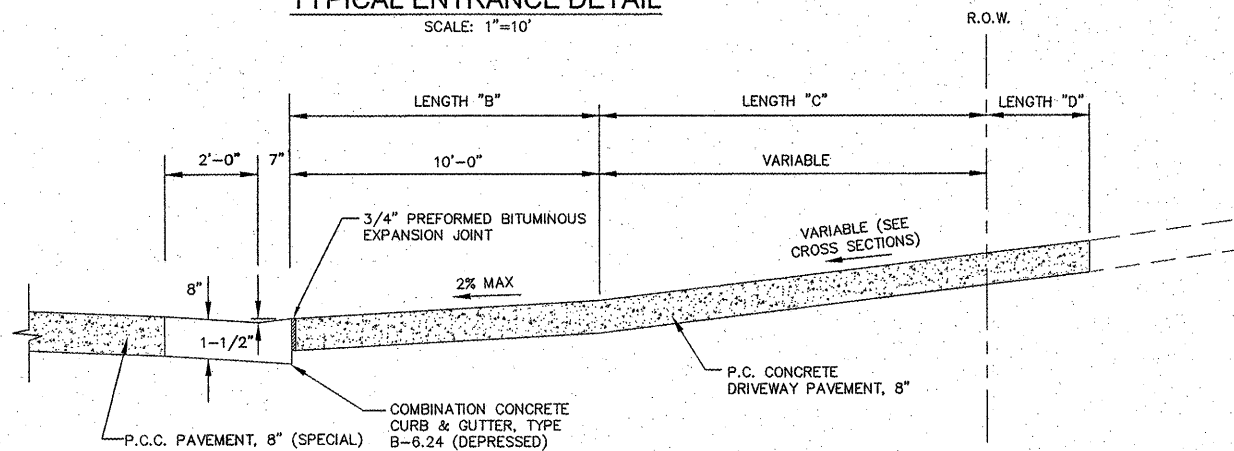
ENTRANCE SCHEDULE

CONTRACT NO. 97476

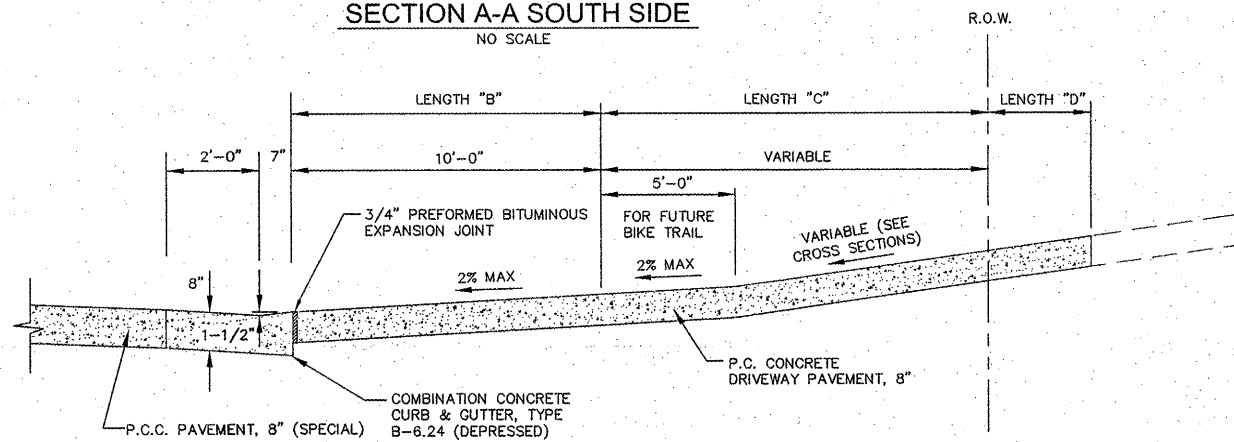
STATION	TYPE OF ENTRANCE	WIDTH "A"	LENGTH "B"	LENGTH "C"	LENGTH "D"	P.C.C. DRIVEWAY P.V.M.T., 8" (SQ. YDS.)
CROSSTOWN ROAD						
196+99 (RT)	C.E.	24.00'	10.0'	24.42'		98.8
198+46 (RT)	C.E.	24.00'	10.0'	24.42'		98.8
202+08 (RT)	C.E.	35.00'	10.0'	24.42'		140.2
215+30 (RT)	C.E.	24.00'	10.0'			33.7
216+40 (RT)	C.E.	24.00'	10.0'			33.7
218+05 (RT)	C.E.	24.00'	10.0'			33.7
218+05 (LT)	C.E.	24.00'	10.0'			33.7
223+61.53 (LT)	C.E.	24.00'	10.0'	24.42'	30.50'	180.0
224+16.94 (RT)	C.E.	24.00'	10.0'	22.15'	25.09'	159.7
TOTALS						812.3



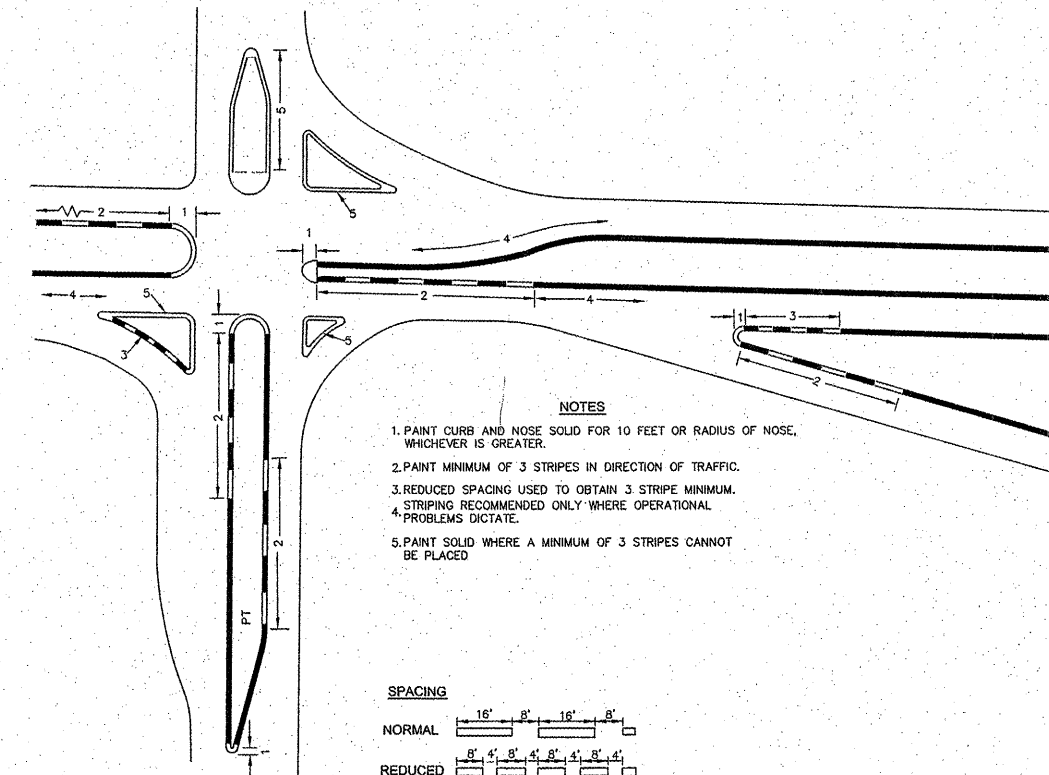
PLAN TYPICAL ENTRANCE DETAIL
SCALE: 1"=10'



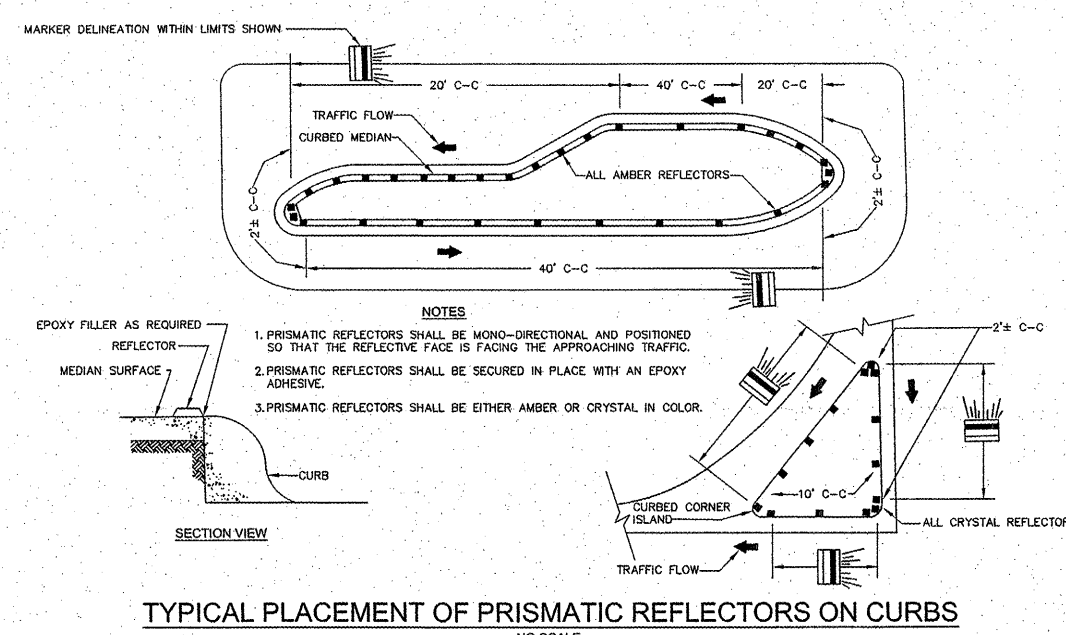
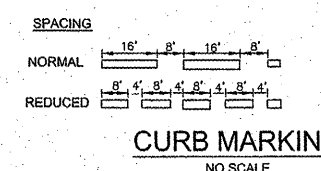
SECTION A-A SOUTH SIDE
NO SCALE



SECTION A-A NORTH SIDE
NO SCALE



- NOTES**
1. PAINT CURB AND NOSE SOLID FOR 10 FEET OR RADIUS OF NOSE, WHICHEVER IS GREATER.
 2. PAINT MINIMUM OF 3 STRIPES IN DIRECTION OF TRAFFIC. STRIPING RECOMMENDED ONLY WHERE OPERATIONAL.
 3. REDUCED SPACING USED TO OBTAIN 3 STRIPE MINIMUM.
 4. PROBLEMS DICTATE.
 5. PAINT SOLID WHERE A MINIMUM OF 3 STRIPES CANNOT BE PLACED.



TYPICAL PLACEMENT OF PRISMATIC REFLECTORS ON CURBS
NO SCALE

REVISIONS

Sheppard, Morgan & Schwaab, Inc.
CONSULTING ENGINEERS AND LAND SURVEYORS
215 Market Street, P.O. Box E, Alton, IL 62002 618/462-9755 E-mail: ms@smsengineers.com
10 Central Industrial Drive, Granite City, IL 62040 618/877-8700 E-mail: ms@smsengineers.com
DESIGN FIRM # 184-000992

SMS ENGINEERS

VILLAGE OF GODFREY, ILLINOIS
SECTION 04-00019-00-PV
CROSSTOWN ROAD - PHASE 1 A
ENTRANCE SCHEDULE AND DETAILS

DWG. NO. GCTR DWY SCH.dwg
REF. BK. PG. 11
JOB NO. 237334
DSN. BY: DEG
DWN. BY: CAD
CHK. BY: DEG
DATE: APRIL 2011

SCALE: AS SHOWN
SHEET 19 OF 38