

CODE NO.	ITEM	UNIT	TOTAL QUANTITY	CONSTRUCTION CODE			
				NHPP	NHPP	NHPP	
				80% FED 20% STATE	80% FED 20% STATE	100% STATE	
				ROADWAY	TRAFFIC SIGNALS	ROADWAY	
				0005	0021	0005	
				URBAN	URBAN	URBAN	
	70306120	TEMPORARY PAVEMENT MARKING - LINE 4" - TYPE III TAPE	FOOT	2496	2496		
*	78000100	THERMOPLASTIC PAVEMENT MARKING - LETTERS AND SYMBOLS	SQ FT	588	588		
*	78000200	THERMOPLASTIC PAVEMENT MARKING - LINE 4"	FOOT	20126	20126		
*	78000400	THERMOPLASTIC PAVEMENT MARKING - LINE 6"	FOOT	3869	3869		
*	78000500	THERMOPLASTIC PAVEMENT MARKING - LINE 8"	FOOT	200	200		
*	78000600	THERMOPLASTIC PAVEMENT MARKING - LINE 12"	FOOT	1407	1407		
*	78000650	THERMOPLASTIC PAVEMENT MARKING - LINE 24"	FOOT	308	308		
*	78009004	MODIFIED URETHANE PAVEMENT MARKING - LINE 4"	FOOT	636	636		
*	78100100	RAISED REFLECTIVE PAVEMENT MARKER	EACH	311	311		
	78300200	RAISED REFLECTIVE PAVEMENT MARKER REMOVAL	EACH	311	311		
	78300202	PAVEMENT MARKING REMOVAL - WATER BLASTING	SQ FT	9984	9984		
*	81028200	UNDERGROUND CONDUIT, GALVANIZED STEEL, 2" DIA.	FOOT	103	103		
*	87301215	ELECTRIC CABLE IN CONDUIT, SIGNAL NO. 14 2C	FOOT	512	512		
*	87301225	ELECTRIC CABLE IN CONDUIT, SIGNAL NO. 14 3C	FOOT	297	297		
	87301305	ELECTRIC CABLE IN CONDUIT, LEAD-IN, NO. 14 1 PAIR	FOOT	200	200		

CODE NO.	ITEM	UNIT	TOTAL QUANTITY	CONSTRUCTION CODE			
				NHPP	NHPP	NHPP	
				80% FED 20% STATE	80% FED 20% STATE	100% STATE	
				ROADWAY	TRAFFIC SIGNALS	ROADWAY	
				0005	0021	0005	
				URBAN	URBAN	URBAN	
*	87900200	DRILL EXISTING HANDHOLE	EACH	4	4		
*	88102717	PEDESTRIAN SIGNAL HEAD, LED, 1-FACE, BRACKET MOUNTED WITH COUNTDOWN TIMER	EACH	8	8		
*	88600100	DETECTOR LOOP, TYPE I	FOOT	270	270		
*	89502378	REBUILD EXISTING HANDHOLE TO HEAVY-DUTY HANDHOLE	EACH	1	1		
	89502376	REBUILD EXISTING HANDHOLE	EACH	2	2		
*	K0029632	WEED CONTROL, NON-SELECTIVE AND NON-RESIDUAL	GALLON	1	1		
*	K1004595	PRUNING FOR SAFETY AND EQUIPMENT CLEARANCE	L SUM	1	1		
	X0320050	CONSTRUCTION LAYOUT (SPECIAL)	L SUM	1	1		
*	X1400367	PEDESTRIAN SIGNAL POST, 10 FT.	EACH	3	3		
*	X1400388	VIDEO VEHICLE DETECTION SYSTEM, SINGLE APPROACH	EACH	2	2		
	X4400501	COMBINATION CURB AND GUTTER REMOVAL AND REPLACEMENT LESS THAN OR EQUAL TO 10 FEET	FOOT	560	560		
	X5537800	STORM SEWERS TO BE CLEANED 12"	FOOT	315			315
	X6330105	TRAFFIC BARRIER TERMINAL REMOVAL, TYPE 1 SPECIAL	EACH	2	2		
	X6700407	ENGINEER'S FIELD OFFICE, TYPE A (D1)	CAL MO	12	12		
*	X8140115	HANDHOLE TO BE ADJUSTED	EACH	1	1		

* SPECIALTY ITEMS

MODEL: Default
FILE: N:\atlas-pw-bentley.com\atlas-pw-431\Documents\Projects\13070307D.DS\001\WD 74110 CAD33_Sheets\01_General\0110321-enc-500.dgn

	USER NAME = nappelt	DESIGNED -	REVISED -
	PLOT SCALE = 100.0000" / in.	DRAWN - NKA	REVISED -
	PLOT DATE = \$DATE\$	CHECKED - BA	REVISED +
		DATE - 08/25/2022	REVISED -

STATE OF ILLINOIS
DEPARTMENT OF TRANSPORTATION

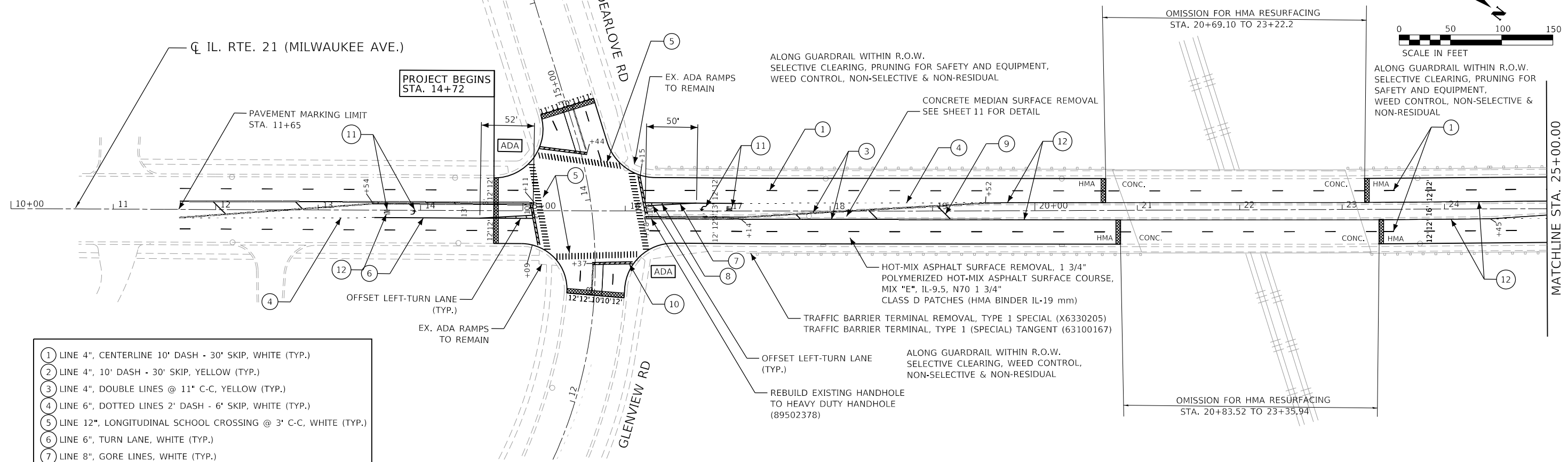
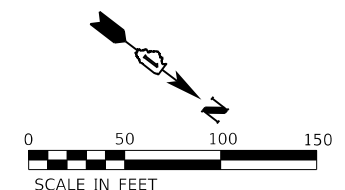
SUMMARY OF QUANTITIES
IL 21 (GLENVIEW RD TO 400 FT NORTH OF KENNICOTT LN)

SCALE: SHEET OF SHEETS STA. TO STA.

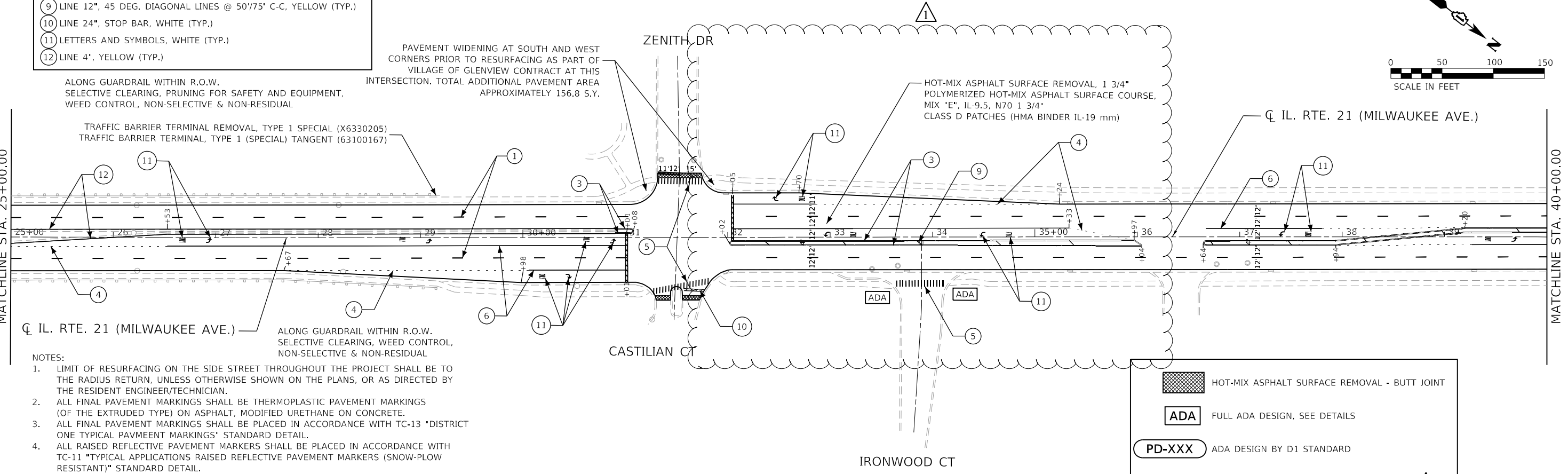
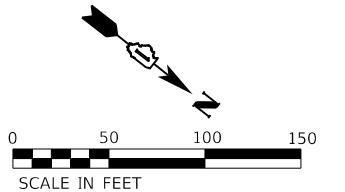
F.A.P. RTE.	SECTION	COUNTY	TOTAL SHEETS	SHEET NO.
374	2021-034-R5	COOK	40	5
CONTRACT NO. 62N53			ILLINOIS FED. AID PROJECT	

REVISOR SHEET 11/1/2022

REV-SEP



- ① LINE 4", CENTERLINE 10' DASH - 30' SKIP, WHITE (TYP.)
- ② LINE 4", 10' DASH - 30' SKIP, YELLOW (TYP.)
- ③ LINE 4", DOUBLE LINES @ 11" C-C, YELLOW (TYP.)
- ④ LINE 6", DOTTED LINES 2' DASH - 6' SKIP, WHITE (TYP.)
- ⑤ LINE 12", LONGITUDINAL SCHOOL CROSSING @ 3' C-C, WHITE (TYP.)
- ⑥ LINE 6", TURN LANE, WHITE (TYP.)
- ⑦ LINE 8", GORE LINES, WHITE (TYP.)
- ⑧ LINE 12", CHEVRONS, WHITE (TYP.)
- ⑨ LINE 12", 45 DEG. DIAGONAL LINES @ 50'/75' C-C, YELLOW (TYP.)
- ⑩ LINE 24", STOP BAR, WHITE (TYP.)
- ⑪ LETTERS AND SYMBOLS, WHITE (TYP.)
- ⑫ LINE 4", YELLOW (TYP.)



- NOTES:
1. LIMIT OF RESURFACING ON THE SIDE STREET THROUGHOUT THE PROJECT SHALL BE TO THE RADIUS RETURN, UNLESS OTHERWISE SHOWN ON THE PLANS, OR AS DIRECTED BY THE RESIDENT ENGINEER/TECHNICIAN.
 2. ALL FINAL PAVEMENT MARKINGS SHALL BE THERMOPLASTIC PAVEMENT MARKINGS (OF THE EXTRUDED TYPE) ON ASPHALT, MODIFIED URETHANE ON CONCRETE.
 3. ALL FINAL PAVEMENT MARKINGS SHALL BE PLACED IN ACCORDANCE WITH TC-13 "DISTRICT ONE TYPICAL PAVEMENT MARKINGS" STANDARD DETAIL.
 4. ALL RAISED REFLECTIVE PAVEMENT MARKERS SHALL BE PLACED IN ACCORDANCE WITH TC-11 "TYPICAL APPLICATIONS RAISED REFLECTIVE PAVEMENT MARKERS (SNOW-PLOW RESISTANT)" STANDARD DETAIL.

	HOT-MIX ASPHALT SURFACE REMOVAL - BUTT JOINT
	FULL ADA DESIGN, SEE DETAILS
	ADA DESIGN BY D1 STANDARD

REVISED SHEET 11/1/2022

MODEL: Default
FILE: h:\mhc_projects\hats-pw\03\030720_DS_001\IWD_24110_CAD_3_Sheets\04_Roadway\0110321-hat-pln.dwg



USER NAME = nappelt	DESIGNED - NKA	REVISED - 10/28/2022 NKA
	DRAWN - NKA	REVISED -
PLOT SCALE = 100.0000' / in.	CHECKED - BA	REVISED -
PLOT DATE = \$DATE\$	DATE - 08/25/2022	REVISED -

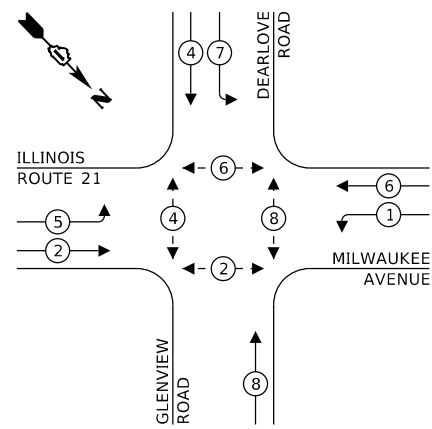
**STATE OF ILLINOIS
DEPARTMENT OF TRANSPORTATION**

**ROADWAY AND PAVEMENT MARKING PLANS
IL 21 (GLENVIEW RD TO 400 FT NORTH OF KENNICOTT LN)**

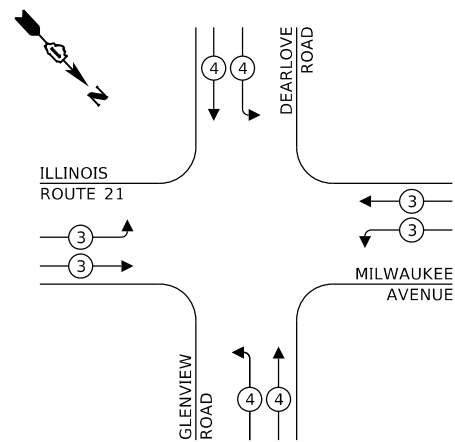
SCALE: 1" = 50' SHEET 1 OF 2 SHEETS STA. TO STA.

F.A.P. RTE.	SECTION	COUNTY	TOTAL SHEETS	SHEET NO.
374	2021-034-R5	COOK	40	9
CONTRACT NO. 60R53				
ILLINOIS FED. AID PROJECT				

EXISTING CONTROLLER SEQUENCE



EXISTING EMERGENCY VEHICLE PREEMPTION SEQUENCE



LEGEND:

- ⊙* — PROTECTED PHASE
- ⊙* — PROTECTED/PERMITTED PHASE
- ⊙* — PEDESTRIAN PHASE

TRAFFIC SIGNAL ELECTRICAL SERVICE REQUIREMENTS

TYPE	NO. OF LAMPS	LED WATTAGE	% OPERATION	TOTAL WATTAGE
SIGNAL (RED)	15	11	50	82.5
(YELLOW)	15	20	5	15.0
(GREEN)	15	12	45	81.0
PERMISSIVE ARROW	16	10	10	16.0
PED. SIGNAL	8	20	100	160.0
CONTROLLER	1	100	100	100.0
UPS	1	25	100	25.0
VIDEO SYSTEM	2	150	100	300.0
BLANK-OUT SIGN	-	25	5	-
FLASHER	-	-	50	-
STREET NAME SIGN	-	120	50	-
LUMINAIRE	-	-	-	-
TOTAL =				779.5

ENERGY COSTS TO:

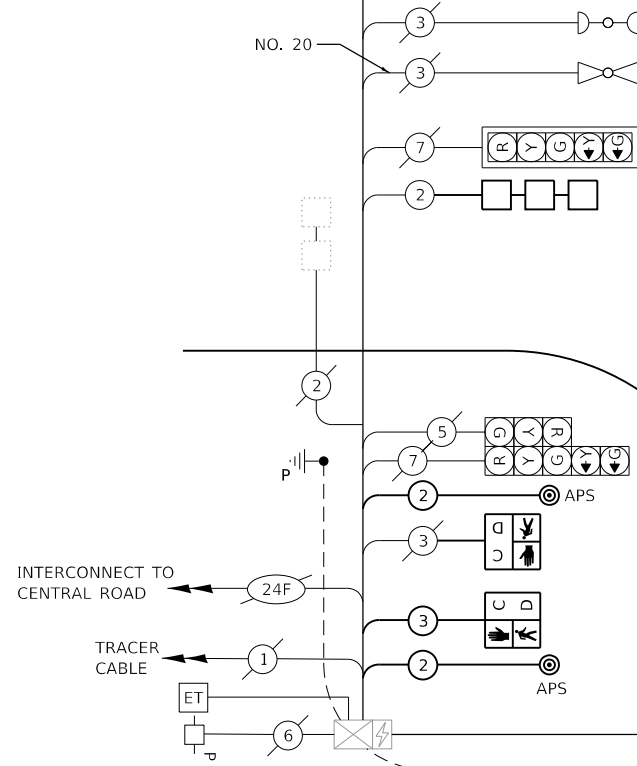
ILLINOIS DEPARTMENT OF TRANSPORTATION
DIVISION OF HIGHWAY/DISTRICT 1
201 WEST CENTER COURT/SCHAMBURG, ILLINOIS 60196-1096

ENERGY SUPPLY: CONTACT: MS. JO BEILER
PHONE: (847) 870-2056
COMPANY: COMMONWEALTH EDISON
ACCOUNT NUMBER: ---

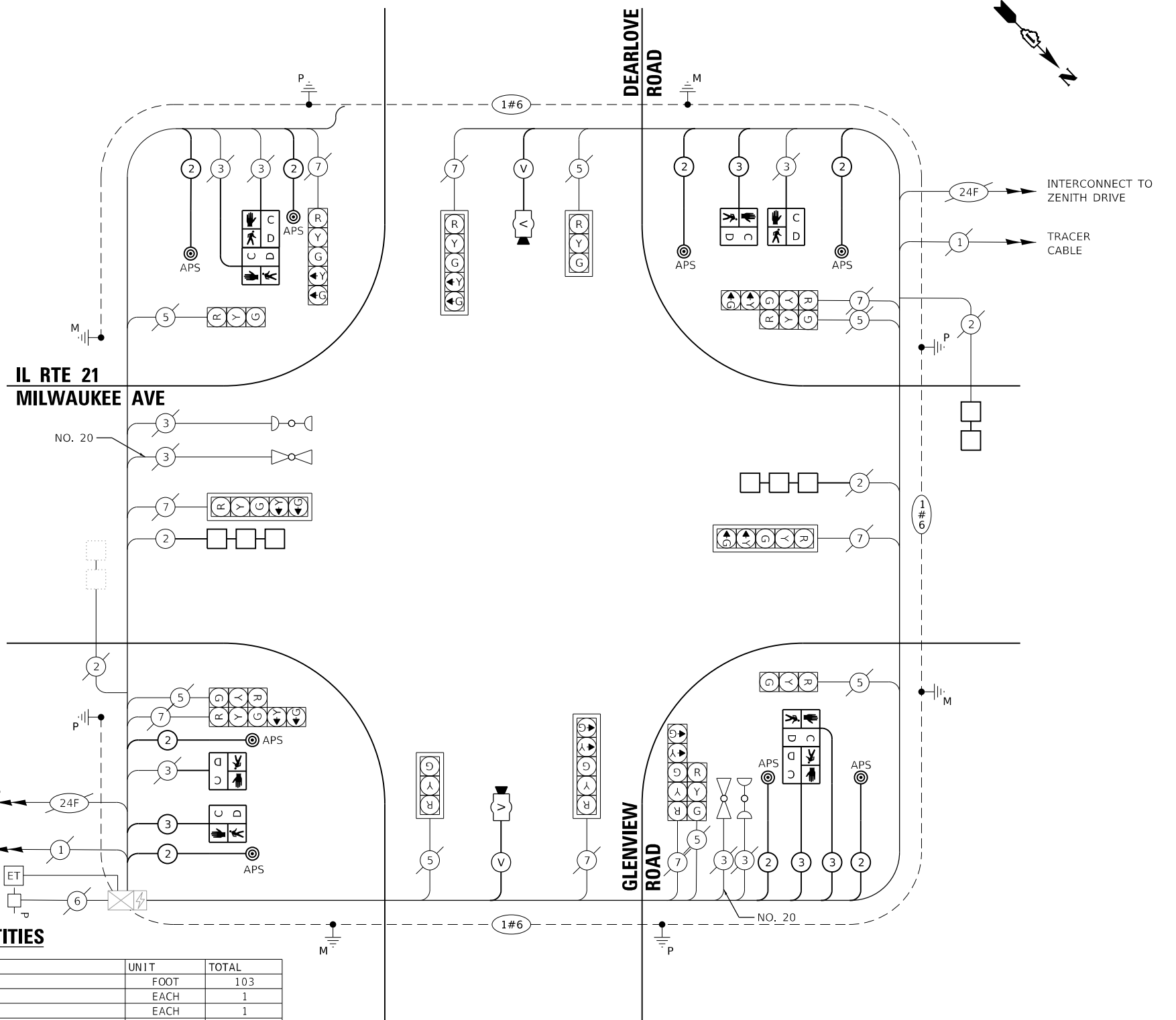
SCHEDULE OF QUANTITIES

DESCRIPTION	UNIT	TOTAL
UNDERGROUND CONDUIT, GALVANIZED STEEL, 2" DIA.	FOOT	103
HEAVY-DUTY HANDHOLE	EACH	1
MAINTENANCE OF EXISTING TRAFFIC SIGNAL INSTALLATION	EACH	1
ELECTRIC CABLE IN CONDUIT, SIGNAL NO. 14 2C	FOOT	512
ELECTRIC CABLE IN CONDUIT, SIGNAL NO. 14 3C	FOOT	343
ELECTRIC CABLE IN CONDUIT, LEAD-IN, NO. 14 1 PAIR	FOOT	200
ELECTRIC CABLE IN CONDUIT, EQUIPMENT GROUNDING CONDUCTOR, NO. 6 IC	FOOT	103
DRILL EXISTING HANDHOLE	EACH	4
PEDESTRIAN SIGNAL HEAD, LED, 1-FACE, BRACKET MOUNTED WITH COUNTDOWN TIMER	EACH	8
DETECTOR LOOP, TYPE I	FOOT	270
REMOVE EXISTING TRAFFIC SIGNAL EQUIPMENT	EACH	1
REBUILD EXISTING HANDHOLE	EACH	2
REBUILD EXISTING HANDHOLE TO HEAVY-DUTY HANDHOLE	EACH	1
REMOVE EXISTING HANDHOLE	EACH	2
PEDESTRIAN SIGNAL POST, 10 FT	EACH	3
VIDEO VEHICLE DETECTION SYSTEM, SINGLE APPROACH	EACH	2
ACCESSIBLE PEDESTRIAN SIGNALS	EACH	8
CONCRETE FOUNDATION, TYPE A 12-INCH DIAMETER	FOOT	12

IL RTE 21 MILWAUKEE AVE



CABLE PLAN



REMOVAL AND RELOCATION NOTES:

THE FOLLOWING ITEMS SHALL BE REMOVED BY THE CONTRACTOR AND SHALL BE DISPOSED OF BY THEM OUTSIDE THE RIGHT-OF-WAY AT THEIR EXPENSE. THE SALVAGE VALUE OF THE REMOVED EQUIPMENT SHALL BE REFLECTED IN THE CONTRACT BID PRICE

- 4 EACH PEDESTRIAN PUSH-BUTTON
- 8 EACH PEDESTRIAN SIGNAL HEAD

**TS 2010
EAGLE 7H**

REVISED SHEET 11/1/2022

**STATE OF ILLINOIS
DEPARTMENT OF TRANSPORTATION**

**TRAFFIC SIGNAL – CABLE PLAN FOR ACCESSIBLE PEDESTRIAN SIGNAL
IL RTE 21 AT GLENVIEW RD**

SCALE: NONE SHEET 2 OF 3 SHEETS STA. TO STA.

F.A.P. RTE.	SECTION	COUNTY	TOTAL SHEETS	SHEET NO.
374	2021-034-R5	COOK	40	16
		62N53		
ILLINOIS FED. AID PROJECT				

MODEL: Default FILE NAME: p:\atlascad\paw-beiler\com\atlascad\paw-beiler\110\Documents\Project\110\2021-034-R5\TrafficSignal\110221-1-16-21-15-CablePlan