

| CODE NO. | ITEM | UNIT | TOTAL QUANTITY | CONSTRUCTION CODE | | |
|------------|---|---|-------------------------|--------------------------|--------------------------|------------|
| | | | | 80% FEDERAL 20% STATE | 80% FEDERAL 20% STATE | 100% STATE |
| | | | | ROADWAY | SAFETY | ROADWAY |
| | | | | 0005 | 0021 | 0005 |
| | | | | URBAN | URBAN | URBAN |
| * 78000650 | THERMOPLASTIC PAVEMENT MARKING - LINE 24" | FOOT | 961 | 961 | | |
| * 78011000 | GROOVING FOR RECESSED PAVEMENT MARKING, LETTERS AND SYMBOLS | SQ FT | 110 | 110 | | |
| * 78011025 | GROOVING FOR RECESSED PAVEMENT MARKING 5" | FOOT | 110 | 110 | | |
| | 78011030 | GROOVING FOR RECESSED PAVEMENT MARKING 6" | FOOT | 136 | 136 | |
| * 78011035 | GROOVING FOR RECESSED PAVEMENT MARKING 7" | FOOT | 100 | 100 | | |
| | | | | | | |
| * 78011125 | GROOVING FOR RECESSED PAVEMENT MARKING 25" | FOOT | 39 | 39 | | |
| | | | | | | |
| * 78100100 | RAISED REFLECTIVE PAVEMENT MARKER | EACH | 1133 | 1133 | | |
| | | | | | | |
| | 78300200 | RAISED REFLECTIVE PAVEMENT MARKER REMOVAL | EACH | 1133 | 1133 | |
| | | | | | | |
| * 81028200 | UNDERGROUND CONDUIT, GALVANIZED STEEL, 2" DIA. | FOOT | 251 | | 251 | |
| | | | | | | |
| * 85000200 | MAINTENANCE OF EXISTING TRAFFIC SIGNAL INSTALLATION | EACH | 4 | | 4 | |
| | | | | | | |
| * 87301215 | ELECTRIC CABLE IN CONDUIT, SIGNAL NO. 14 2C | FOOT | 2556 | | 2556 | |
| * 87301225 | ELECTRIC CABLE IN CONDUIT, SIGNAL NO. 14 3C | FOOT | 420 | | 420 | △ |
| * 87301900 | ELECTRIC CABLE IN CONDUIT, EQUIPMENT GROUNDING CONDUCTOR, NO. 6 1C | FOOT | 304 | | 304 | |
| | | | | | | |
| * 87900200 | DRILL EXISTING HANDHOLE | EACH | 14 | | 14 | |
| * 88102717 | PEDESTRIAN SIGNAL HEAD, LED, 1-FACE, BRACKET MOUNTED WITH COUNTDOWN TIMER | EACH | 2 | | 2 | △ |
| * 88600100 | DETECTOR LOOP, TYPE I | FOOT | 2356 2205 | | 2356 2205 | △ |
| | | | | | | |
| * 88600600 | DETECTOR LOOP REPLACEMENT | FOOT | 402 | | 402 | |

*SPECIALTY ITEM

MODEL: Default
FILE NAME: Z:\1058.11 IDOT D1 PFB 199-015 WD 11 IL 83 Resurfacing\DOT\Design\Pre\199-015\Sheet62N67-044-500.dgn

EFK Moen
Civil Engineering Design

| | | |
|------------------------------|------------------|-----------|
| USER NAME = skierpiec | DESIGNED - AN | REVISED - |
| PLOT SCALE = 100.0000' / in. | DRAWN - AN | REVISED - |
| PLOT DATE = 8/26/2022 | CHECKED - JH | REVISED - |
| | DATE - 8/18/2022 | REVISED - |

STATE OF ILLINOIS
DEPARTMENT OF TRANSPORTATION

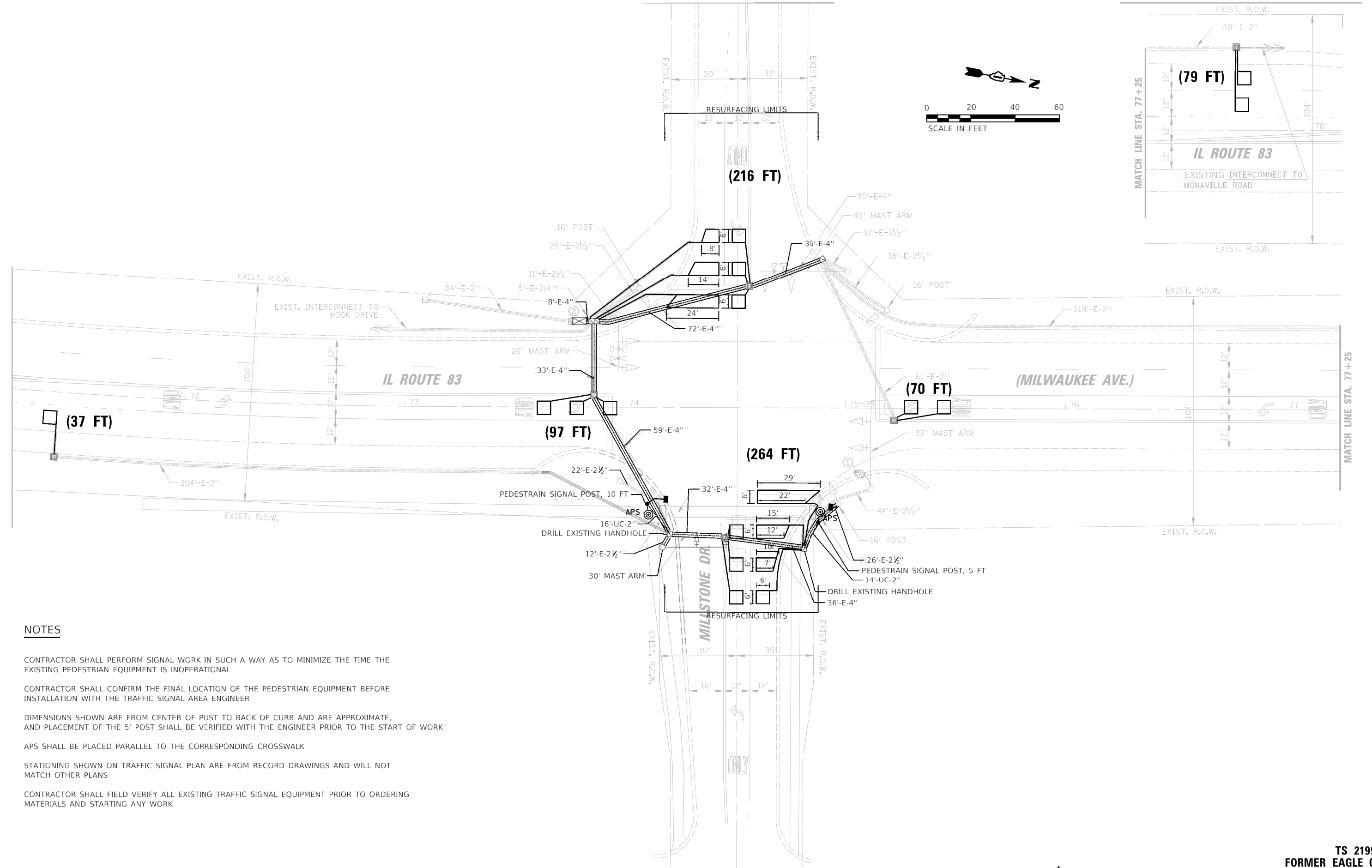
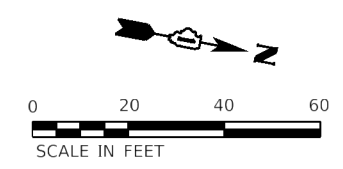
SUMMARY OF QUANTITIES

SCALE: N/A SHEET 5 OF 7 SHEETS STA. TO STA.

| | | | | |
|---------------------------|-------------|--------|--------------------|-----------|
| F.A.P. RTE. | SECTION | COUNTY | TOTAL SHEETS | SHEET NO. |
| 866 | 2021-044-R5 | LAKE | 65 | 7 |
| ILLINOIS FED. AID PROJECT | | | CONTRACT NO. 62N67 | |

△ REVISED SHEET 11/7/2022

REV-SEP



NOTES

- CONTRACTOR SHALL PERFORM SIGNAL WORK IN SUCH A WAY AS TO MINIMIZE THE TIME THE EXISTING PEDESTRIAN EQUIPMENT IS INOPERATIONAL
- CONTRACTOR SHALL CONFIRM THE FINAL LOCATION OF THE PEDESTRIAN EQUIPMENT BEFORE INSTALLATION WITH THE TRAFFIC SIGNAL AREA ENGINEER
- DIMENSIONS SHOWN ARE FROM CENTER OF POST TO BACK OF CURB AND ARE APPROXIMATE, AND PLACEMENT OF THE 5' POST SHALL BE VERIFIED WITH THE ENGINEER PRIOR TO THE START OF WORK
- APS SHALL BE PLACED PARALLEL TO THE CORRESPONDING CROSSWALK
- STATIONING SHOWN ON TRAFFIC SIGNAL PLAN ARE FROM RECORD DRAWINGS AND WILL NOT MATCH OTHER PLANS
- CONTRACTOR SHALL FIELD VERIFY ALL EXISTING TRAFFIC SIGNAL EQUIPMENT PRIOR TO ORDERING MATERIALS AND STARTING ANY WORK

1 REVISED ENTIRE SHEET 11/7/2022

**TS 21991
FORMER EAGLE 07
LAKE COUNTY PASSAGE**



| | | |
|-----------------------------|------------------|--------------------------|
| USER NAME = jDavis | DESIGNED - PV | REVISED - 10/24/2022 JJD |
| PLGT SCALE = 40.0000' / in. | DRAWN - PV | REVISED - |
| PLGT DATE = 10/25/2022 | CHECKED - JJD | REVISED - |
| | DATE - 8/14/2022 | REVISED - |

**STATE OF ILLINOIS
DEPARTMENT OF TRANSPORTATION**

**IL RTE 83 AND MILLSTONE DR
APS AND DETECTOR LOOP REPLACEMENT PLAN**

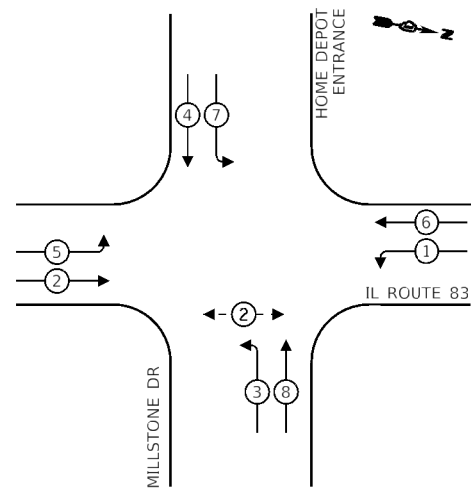
SCALE: 1" = 20' SHEET 4 OF 11 SHEETS STA. TO STA.

| F.A.P. RTE. | SECTION | COUNTY | TOTAL SHEETS | SHEET NO. |
|---------------------------|-------------|--------|--------------------|-----------|
| 347 | 2021-047-R5 | LAKE | 65 | 47 |
| | | | CONTRACT NO. 62N67 | |
| ILLINOIS FED. AID PROJECT | | | | |

SCHEDULE OF QUANTITIES

| ITEM DESCRIPTION | UNIT | TOTAL QTY |
|---|------|-----------|
| UNDERGROUND CONDUIT, GALVANIZED STEEL, 2" DIA | FOOT | 30 |
| MAINTENANCE OF EXISTING TRAFFIC SIGNAL INSTALLATION | EACH | 1 |
| ELECTRIC CABLE IN CONDUIT, SIGNAL NO. 14 2C | FOOT | 394 |
| ELECTRIC CABLE IN CONDUIT, SIGNAL NO. 14 3C | FOOT | 420 |
| ELECTRIC CABLE IN CONDUIT, EQUIPMENT GROUNDING CONDUCTOR, NO. 6 1C | FOOT | 43 |
| DETECTOR LOOP, TYPE 1 | FOOT | 763 |
| DRILL EXISTING HANDHOLE | EACH | 2 |
| PEDESTRIAN SIGNAL HEAD, LED, 1-FACE, BRACKET MOUNTED WITH COUNTDOWN TIMER | EACH | 2 |
| ACCESSIBLE PEDESTRIAN SIGNALS | EACH | 2 |
| PEDESTRIAN SIGNAL POST, 10 FT. | EACH | 1 |
| PEDESTRIAN SIGNAL POST, 5 FT. | EACH | 1 |
| CONCRETE FOUNDATION, TYPE A, 12 INCH DIA. | FOOT | 8 |

EXISTING CONTROLLER SEQUENCE



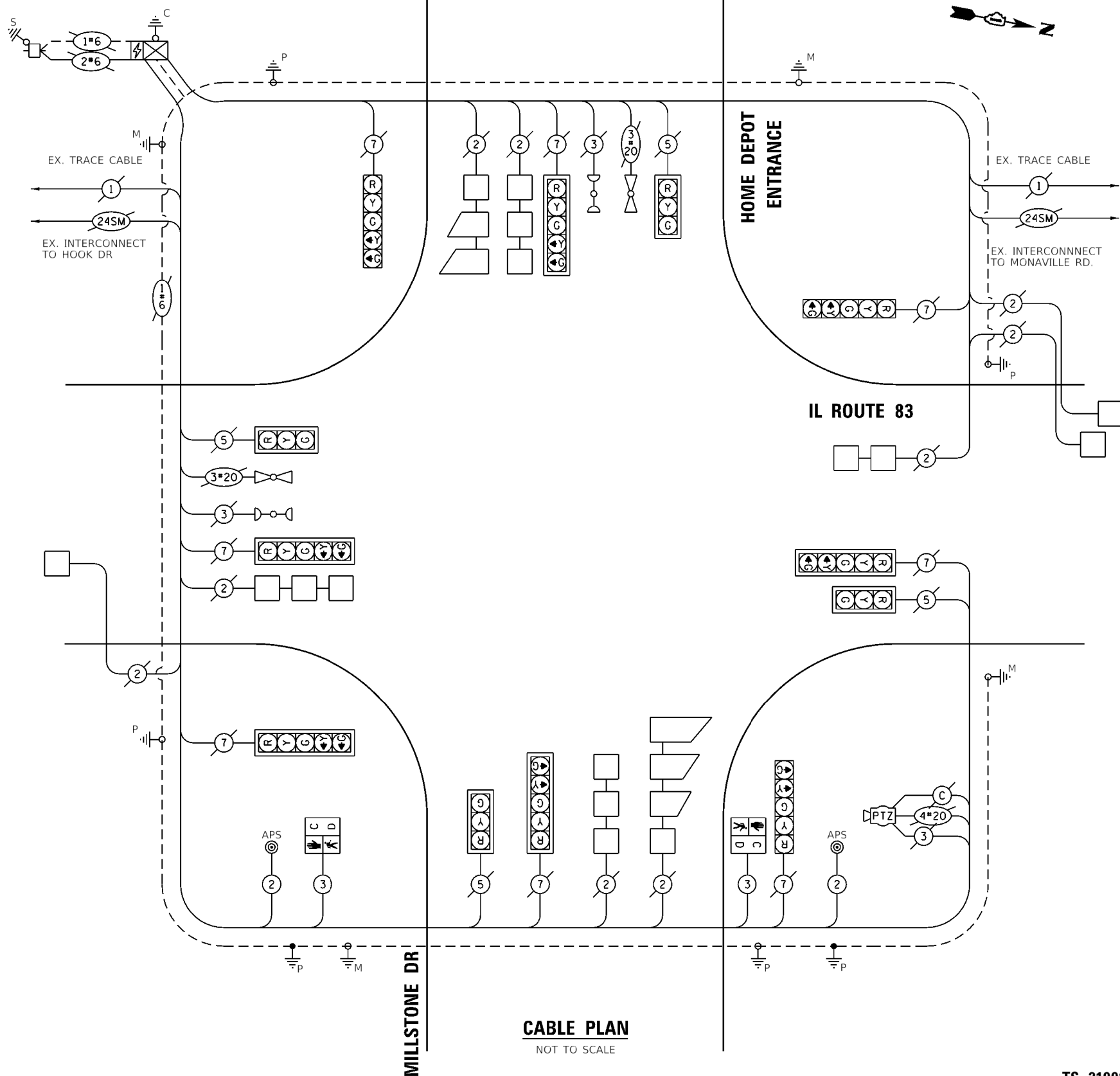
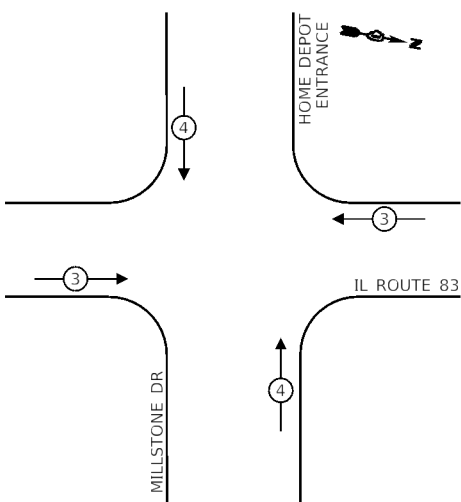
LEGEND

- ← (⊙) → DUAL ENTRY PHASE
- ← (⊙) → PEDESTRIAN PHASE
- ← (⊙) OL → OVERLAP
- * REFERS TO ASSOCIATED PHASE

TRAFFIC SIGNAL ELECTRICAL SERVICE REQUIREMENTS

| TYPE | NO. OF LAMPS | LED WATTAGE | % OPERATION | TOTAL WATTAGE |
|-----------------------|--------------|-------------|-------------|---------------|
| SIGNAL (RED) | 12 | 17 | 50 | 102 |
| (YELLOW) | 12 | 25 | 25 | 75 |
| (GREEN) | 12 | 15 | 25 | 45 |
| ARROW | 16 | 12 | 10 | 20 |
| PED. SIGNAL | 2 | 25 | 100 | 50 |
| LUMINAIRE | - | 250 | 50 | - |
| ILLUMINATED SIGN | - | 25 | - | - |
| PTZ CAMERA | 1 | 100 | 100 | 100 |
| CONTROLLER | 1 | 100 | 100 | 100 |
| BATTERY BACKUP SYSTEM | - | 25 | 100 | - |
| FLASHER | - | - | 50 | - |
| TOTAL = | | | | 492 |

EXISTING EMERGENCY VEHICLE PREEMPTION SEQUENCE



CABLE PLAN
NOT TO SCALE

ENERGY COSTS TO:
ILLINOIS DEPARTMENT OF TRANSPORTATION
201 W. CENTER CT
SCHAUMBURG, IL 60196

ENERGY SUPPLY: CONTACT: COMED REPRESENTATIVE
PHONE: (866) 639-3532
COMPANY: COMMONWEALTH EDISON
ACCOUNT NUMBER: 41331-31043



| | | |
|------------------------------|------------------|--------------------------|
| USER NAME = j.davis | DESIGNED - PV | REVISED - 10/24/2022 JJD |
| PLGT SCALE = 100.0000" / in. | DRAWN - PV | REVISED - |
| PLOT DATE = 11/4/2022 | CHECKED - JJD | REVISED - |
| | DATE - 8/14/2022 | REVISED - |

STATE OF ILLINOIS DEPARTMENT OF TRANSPORTATION

**IL RTE 83 AND MILLSTONE DR
APS AND DETECTOR LOOP REPLACEMENT PLAN**

SCALE: NONE SHEET 5 OF 11 SHEETS STA. TO STA.

REVISOR: 11/7/2022

| | | | | |
|---------------------------|---------------------|-------------|--------------------|--------------|
| F.A.P. RTE. 347 | SECTION 2021-047-R5 | COUNTY LAKE | TOTAL SHEETS 65 | SHEET NO. 48 |
| | | | CONTRACT NO. 62N67 | |
| ILLINOIS FED. AID PROJECT | | | | |

**TS 21991
FORMER EAGLE 07
LAKE COUNTY PASSAGE**