

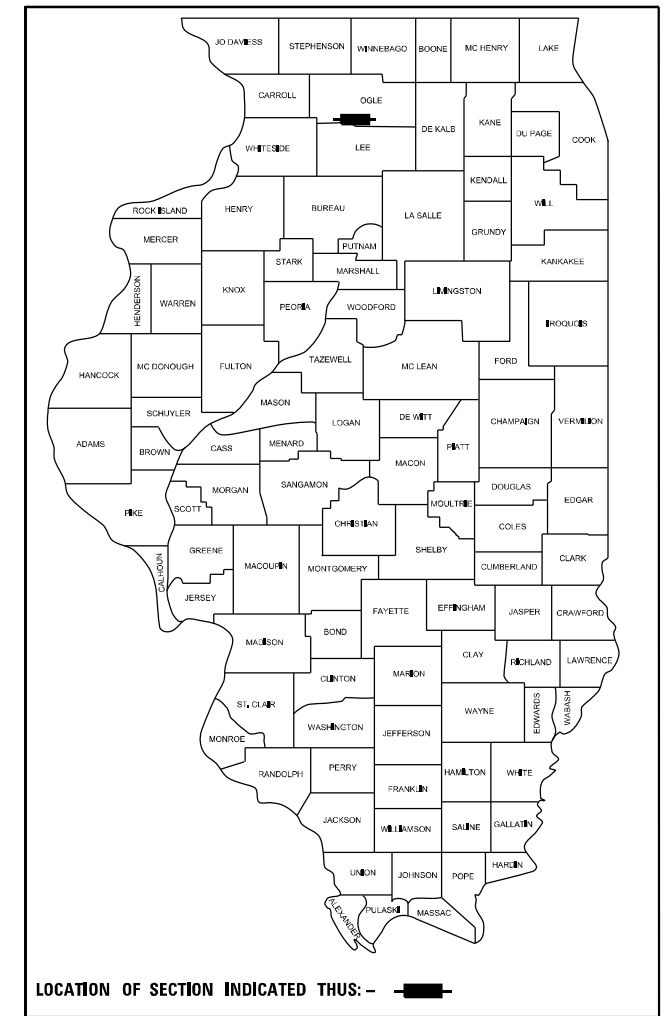
STATE OF ILLINOIS
DEPARTMENT OF TRANSPORTATION

F.A.P. RTE.	SECTION	COUNTY	TOTAL SHEETS	SHEET NO.
742	(39BR)BDR	OGLE	16	1
		ILLINOIS	CONTRACT NO. 64R12	

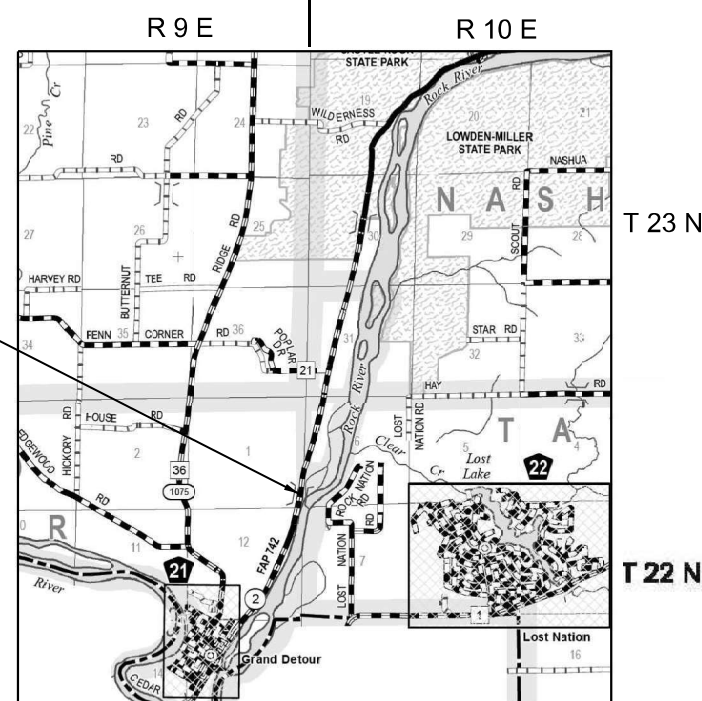
FOR INDEX OF SHEETS, SEE SHEET NO. 2

PROPOSED HIGHWAY PLANS

FAP 742 (IL 2)
SECTION (39BR)BDR
PROJECT NHPP-UIWH(782)
BRIDGE DECK AND APPROACH REPAIR
OGLE COUNTY

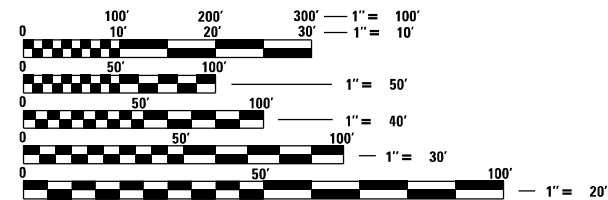


C-92-081-21



EXISTING STRUCTURE LOCATION

SN 071-0072
1-SPAN OVER A DRAINAGE DITCH
CONCRETE GIRDER SUPERSTRUCTURE
WITH SPILL THROUGH ABUTMENTS.
BACK TO BACK LENGTH = 87'-0"
OUT TO OUT WIDTH = 39'-3"



FULL SIZE PLANS HAVE BEEN PREPARED USING STANDARD ENGINEERING SCALES. REDUCED SIZED PLANS WILL NOT CONFORM TO STANDARD SCALES. IN MAKING MEASUREMENTS ON REDUCED PLANS, THE ABOVE SCALES MAY BE USED.

J.U.L.I.E.
JOINT UTILITY LOCATION INFORMATION FOR EXCAVATORS
1-800-892-0123
OR 811

PROJECT ENGINEER SCOTT WYATT, PE, SE
PROJECT MANAGER MAHMOUD ETEMADI, PE

GROSS LENGTH = x.xx FT. = x.xxx MILE
NET LENGTH = x.xx FT. = x.xxx MILE



exp 11/30/2023
Michael G Bunting
For Maintenance of Traffic

STATE OF ILLINOIS
DEPARTMENT OF TRANSPORTATION

SUBMITTED August 16, 2022
[Signature]
REGIONAL ENGINEER

October 14, 2022
[Signature]
ENGINEER OF DESIGN AND ENVIRONMENT

October 14, 2022
[Signature]
DIRECTOR OF HIGHWAYS PROJECT IMPLEMENTATION

**PRINTED BY THE AUTHORITY
OF THE STATE OF ILLINOIS**

CONTRACT NO. 64R12

SHEET INDEX

1. COVER
2. GENERAL NOTES/ CONSTRUCTION SEQUENCE
- 3-5. SUMMARY OF QUANTITIES
6. STAGING TYPICAL SECTION
7. MAINTENANCE OF TRAFFIC PLAN STAGE 1
8. MAINTENANCE OF TRAFFIC PLAN STAGE 2
9. DISTRICT 2 STANDARD 34.1
10. APPROACH PAVEMENT
11. SN 071-0072 GENERAL PLAN AND ELEVATION
12. SN 071-0072 JOINT REMOVAL AND PLACEMENT DETAIL
13. SN 071-0072 PREFORMED JOINT STRIP SEAL DETAILS
14. SN 071-0072 BAR SPLICER ASSEMBLY AND MECHANICAL SPLICER DETAILS
15. SN 071-0072 TEMPORARY CONCRETE BARRIER FOR STAGE CONSTRUCTION
16. SN 071-0072 PPC I-BEAM REPAIR

STATE HIGHWAY STANDARDS

000001-08	STANDARD SYMBOLS, ABBREVIATIONS AND PATTERNS
701006-05	OFF-RD OPERATIONS, 2L, 2W, 15' TO 24" FROM PAVEMENT EDGE
701201-05	LANE CLOSURE, 2L, 2W, DAY ONLY, FOR SPEEDS > 45 MPH
701301-04	LANE CLOSURE, 2L, 2W, SHORT TIME OPERATIONS
701311-03	LANE CLOSURE, 2L, 2W, MOVING OPERATIONS-DAY ONLY
701321-18	LANE CLOSURE, 2L, 2W, BRIDGE REPAIR WITH BARRIER
701901-08	TRAFFIC CONTROL DEVICES
704001-08	TEMPORARY CONCRETE BARRIER
780001-05	TYPICAL PAVEMENT MARKINGS
782006-01	GUARDRAIL AND BARRIER WALL REFLECTOR MOUNTING DETAILS

MAINTENANCE OF TRAFFIC GENERAL NOTES

1. THE MAINTENANCE OF TRAFFIC CONTROL (MOT) PLANS SHALL SERVE AS A GUIDE FOR SAFE DIVERSION OF TRAFFIC DURING EXECUTION OF THIS CONTRACT. HOWEVER, THE CONTRACTOR MAY MODIFY THE MOT PLANS TO MEET CONSTRUCTION NEEDS, BUT NOT AT THE EXPENSE OF PUBLIC SAFETY OR CONVENIENCE. ANY CHANGES TO THE MOT PLANS SHALL BE SUBMITTED TO THE ENGINEER FOR APPROVAL.
2. THE ENGINEER SHALL BE INFORMED 48 HOURS IN ADVANCE OF ANY PROPOSED CHANGE TO THE MOT PLANS.
3. ALL EXISTING PAVEMENT MARKINGS IN CONFLICT WITH THE MAINTENANCE OF TRAFFIC STRIPING SHALL BE BLACKED OUT TO THE LIMITS SHOWN IN THE PLANS.
4. ALL TEMPORARY PAVEMENT MARKING WHICH CONFLICTS WITH THE NEXT STAGE OR FINAL STRIPING SHALL BE REMOVED OR BLACKED OUT TO THE LIMITS SPECIFIED IN THE PLANS AND IN THE SCHEDULES OF PAVEMENT MARKING.
5. ALL TRAFFIC CONTROL DEVICES USED FOR THE MAINTENANCE OF TRAFFIC, AS DETAILED ON THE PLANS OR HIGHWAY STANDARD, SHALL BE REFLECTORIZED PRIOR TO INSTALLATION AND CLEANED AS SPECIFIED IN THE MAINTENANCE OF TRAFFIC SPECIAL PROVISIONS OR AS DIRECTED BY THE ENGINEER.
6. ALL EXISTING SIGNS WITHIN MAINTENANCE OF TRAFFIC LIMITS WHICH ARE OBSCURED BY OR INTERFERE WITH CONSTRUCTION OPERATIONS AND MAINTENANCE OF TRAFFIC, SHALL BE COVERED OR REMOVED BY THE CONTRACTOR UNLESS SPECIFIED IN THE PLANS OR WHEN DIRECTED BY THE ENGINEER. THIS WORK SHALL BE IN ACCORDANCE WITH ARTICLE 107.25 OF THE IDOT STANDARD SPECIFICATIONS.
7. A FULL DEPTH SAWCUT WILL BE REQUIRED BETWEEN PAVEMENT, CURB AND/OR GUTTER TO REMAIN AND PAVEMENT, CURB AND/OR GUTTER TO BE REMOVED PRIOR TO BEGINNING OF REMOVAL WORK. COST TO BE INCLUDED WITH APPLICABLE REMOVAL ITEMS.
8. THE CONTRACTOR SHALL CONTACT THE IDOT DISTRICT 2 ENGINEER AT (815)284-2271 A MINIMUM OF 72 HOURS IN ADVANCE OF BEGINNING WORK.

SUGGESTED MAINTENANCE OF TRAFFIC SEQUENCING

STAGE 1

INSTALL ALL STAGE 1 CONSTRUCTION TRAFFIC CONTROL SIGNALS, SIGNS, DRUMS, BARRICADES, TEMPORARY CONCRETE BARRIER, TEMPORARY IMPACT ATTENUATORS, AND TEMPORARY PAVEMENT MARKINGS AS DETAILED IN STAGE 1 PLANS AND APPROPRIATE STANDARD DRAWINGS. LOCATIONS FOR ADVANCE WARNING SIGNS, TEMPORARY BRIDGE SIGNALS, AND STOP LINES DO NOT CHANGE FROM STAGE 1 TO STAGE 2 UNLESS DIRECTED OTHERWISE BY THE ENGINEER.

MERGE ALL TRAFFIC IN BOTH DIRECTIONS TO THE EXISTING WESTBOUND LANE AND SHOULDER OF SN 071-0015 CROSSING PINE CREEK.

COORDINATE WORK TO BE COMPLETED IN THIS STAGE WITH DETAILS IN THE BRIDGE PLANS.

STAGE 2

CHANGE STAGE 1 CONSTRUCTION TRAFFIC CONTROL SIGNALS, SIGNS, DRUMS, BARRICADES, TEMPORARY CONCRETE BARRIER, TEMPORARY IMPACT ATTENUATORS, AND TEMPORARY PAVEMENT MARKINGS AS NEEDED TO REFLECT STAGE 2 PLANS AND APPROPRIATE STANDARD DRAWINGS.

MERGE ALL TRAFFIC IN BOTH DIRECTIONS TO THE EXISTING EASTBOUND LANE AND SHOULDER OF SN 071-0015 CROSSING PINE CREEK.

REMOVE ALL CONFLICTING TRAFFIC CONTROL ITEMS FROM STAGE 1 SETUP.

COORDINATE WORK TO BE COMPLETED IN THIS STAGE WITH DETAILS IN THE BRIDGE PLANS.

POST STAGE

REMOVE ALL CONSTRUCTION TRAFFIC CONTROL AND TEMPORARY CONSTRUCTION ITEMS.

REMOVE ANY REMAINING EXISTING TEMPORARY PAVEMENT MARKINGS WITHIN THE PERMANENT PAVEMENT MARKING LIMITS.

SCHEDULE OF PAVEMENT MARKING AND REMOVAL												
Item	Location	Station		Offset		Pavement Markings				Short Term Marking Removal		
		Begin	End	Min	Max	6" Blackout Tape	4" Temp	24" Temp	4" Perm.	Blackout Tape	4" Temp	24" Temp
6" Blackout Tape	West Permanent Edgeline	119+80	124+50	14.8' Lt	14.8' Lt	470						
6" Blackout Tape	Dbl Yellow CL South End	118+20	121+20	2.8' Lt	2.8' Lt	600				300		
6" Blackout Tape	Dbl Yellow CL North End	123+10	126+10	2.8' Lt	2.8' Lt	600				300		
4" White Temp Tape	Left Travel Lane Edgeline	119+80	124+50	14.8' Lt	20.0' Lt					470		
4" White Temp Tape	Right Travel Lane Edgeline	118+30	125+50	2.8' Lt	9.2' Rt					720		
24" White Temp Tape	Westbound Stop Line										12	
24" White Temp Tape	Eastbound Stop Line										12	
STAGE 2												
Temp Marking Removal	Stage 1 Lt Travel Ln Edgeline	119+80	124+50	14.8' Lt	20.0' Lt							157
Temp Marking Removal	Stage 1 Rt Travel Ln Edgeline	118+30	125+50	8.0' Lt	9.2' Rt							240
Temp Marking Removal	6" Blackout West Edgeline	119+80	124+50	14.8' Lt	14.8' Lt							235
6" Blackout Tape	E Permanent Edgeline S End	119+80	121+20	12' Lt	12' Lt	140						
6" Blackout Tape	E Permanent Edgeline N End	123+10	124+50	12' Lt	12' Lt	140						
4" White Temp Tape	Right Travel Lane Edgeline	119+80	124+50	9.2' Rt	14.0' Rt					470		
4" White Temp Tape	Left Travel Lane Edgeline	118+30	125+50	14.8' Lt	2.0' Rt					720		
POST STAGE												
Temp Marking Removal	2-6" Blackout CL South End	118+20	121+20	2.8' Lt	2.8' Lt							300
Temp Marking Removal	2-6" Blackout CL North End	123+10	126+10	2.8' Lt	2.8' Lt							300
6" Blackout Tape	E Permanent Edgeline S End	119+80	121+20	12' Lt	12' Lt							70
6" Blackout Tape	E Permanent Edgeline N End	123+10	124+50	12' Lt	12' Lt							70
Temp Marking Removal	Stage 2 Rt Travel Ln Edgeline	119+80	124+50	9.2' Rt	14.0' Rt							157
Temp Marking Removal	Stage 2 Lt Travel Ln Edgeline	118+30	125+50	14.8' Lt	2.0' Rt							240
Temp Marking Removal	EB and WB, Signal Stop Lines											48
4" Permanent Marking	W Permanent White Edgeline	118+20	126+10	14.8' Lt	14.8' Lt							790
4" Permanent Marking	E Permanent White Edgeline	118+20	126+10	9.2' Rt	9.2' Rt							790
4" Permanent Marking	CL Permanent Double Yellow	118+20	126+10	2.8' Lt	2.8' Lt							1580
TOTAL						1,950	2,380	24	3,160	2,416		

SCHEDULE OF TEMP CONCRETE BARRIER AND REFLECTORS								
Location	Station		Temporary Conc Barrier		Guardrail Refl Type C		Bridge Rail Refl Type C	
	Begin	End	Set Stage 1	Reloc Stage 2	Stage 1	Stage 2	Stage 1	Stage 2
			Foot	Foot	Each	Each	Each	Each
Stage 1 & Stage 2	120+20	124+00	388	388				
West Guardrail	119+80	121+45			7			
	122+55	124+50			8			
West Bridge Rail	121+45	122+55					9	
East Guardrail	119+80	121+60				8		
	122+70	124+50				8		
East Bridge Rail	121+60	122+70						9
TOTAL			388	388	31		18	

SHOULDER RUMBLE STRIP								
Stage 1 Location	Station Limits		REMOVAL			8 INCH	TEMPORARY	
	Begin	End	Length	Width	Area	Length	Each	
			Foot <td>Foot <td>SY <td>Foot <td></td> </td></td></td>	Foot <td>SY <td>Foot <td></td> </td></td>	SY <td>Foot <td></td> </td>	Foot <td></td>		
West Shoulder South End	119+80	121+45	165	3	55	165	7	
West Shoulder North End	122+57	124+50	193	3	64	193		
Stage 2 Location								
East Shoulder South End	119+80	121+60	180	3	60	180	7	
East Shoulder North End	122+72	124+50	178	3	59	178		
TOTAL						238	716	14

MODEL: D:\ch...
FILE NAME: ...
3230 Executive Drive, Joliet, Illinois 60431
Ph: (815) 730-3444 Fax: (815) 730-6703
E LICENSE NO. 184-003005
© 2020 HAMILTON CONSULTING ENGINEERS, INC.

HAMILTON CONSULTING ENGINEERS, INC.

USER NAME = scootw	DESIGNED -	REVISED -
PLOT SCALE = 100,0000 / 1in.	DRAWN - DWS	REVISED -
PLOT DATE = 8/16/2022	CHECKED -	REVISED -
	DATE -	REVISED -

STATE OF ILLINOIS DEPARTMENT OF TRANSPORTATION

IL 2 CROSSING DRAINAGE DITCH GENERAL NOTES / CONSTRUCTION SEQUENCE

SCALE: NA SHEET 2 OF SHEETS STA. TO STA.

F.A.P. RTE. 742	SECTION (39BR)BDR	COUNTY OGLE	TOTAL SHEETS 16	SHEET NO. 2
CONTRACT NO. 64R12				
ILLINOIS FED. AID PROJECT				

SUMMARY OF QUANTITIES

CODE NO.	ITEM	UNIT	TOTAL QUANTITY	CONSTRUCTION CODE	
				80% FEDERAL	20% STATE
				BRIDGE	ROADWAY
				SN 071-0072	RURAL
40602965	HOT-MIX ASPHALT BINDER COURSE, IL 9.5 FG, N50	TON	53		53
40604050	HOT-MIX ASPHALT SURFACE COURSE, IL 9.5, MIX "C", N50	TON	53		53
44000157	HOT-MIX ASPHALT SURFACE REMOVAL, 2"	SQ YD	755		755
50102400	CONCRETE REMOVAL	CU YD	7.1	7.1	
50300255	CONCRETE SUPERSTRUCTURE	CU YD	7.7	7.7	
50300300	PROTECTIVE COAT	SQ YD	638.9	638.9	
50800205	REINFORCEMENT BARS, EPOXY COATED	POUND	790	790	
50800515	BAR SPLICERS	EACH	12	12	
52000110	PREFORMED JOINT STRIP SEAL	FOOT	82	82	
60260100	INLETS TO BE ADJUSTED	EACH	1	1	
64200108	SHOULDER RUMBLE STRIPS, 8 INCH	FOOT	716		716
67100100	MOBILIZATION	L SUM	1	1	
70100405	TRAFFIC CONTROL AND PROTECTION, STANDARD 701321	EACH	1		1
70100450	TRAFFIC CONTROL AND PROTECTION, STANDARD 701201	L SUM	1		1
70106500	TEMPORARY BRIDGE TRAFFIC SIGNALS	EACH	1	1	
70106700	TEMPORARY RUMBLE STRIPS	EACH	14		14
70107006	PAVEMENT MARKING BLACKOUT TAPE, 6"	FOOT	1,950		1,950

MODEL: D:\proj\10042200229 - W01115\Jmm\11-28-22\1-Corridor\Drawn - 2-5000.dgn
 FILE NAME: \proj\10042200229 - W01115\Jmm\11-28-22\1-Corridor\Drawn - 2-5000.dgn

HAMILTON CONSULTING ENGINEERS, INC.
 3230 Executive Drive, Joliet, Illinois 60431
 Ph: (815) 730-0444 Fax: (815) 730-6703
 LICENSE NO. 184-003205
 © 2020 HAMILTON CONSULTING ENGINEERS, INC.

USER NAME	■ scottw	DESIGNED	- MGB	REVISED	-
		DRAWN	- DWS	REVISED	-
PLOT SCALE	■ 2,0000 1/16"	CHECKED	- HJH	REVISED	-
PLOT DATE	■ 8/9/2022	DATE	-	REVISED	-

STATE OF ILLINOIS
DEPARTMENT OF TRANSPORTATION

IL 2 CROSSING DRAINAGE DITCH
SCHEDULE OF QUANTITIES

SCALE: SHEET 3 OF SHEETS STA. TO STA.

F.A.P. RTE.	SECTION	COUNTY	TOTAL SHEETS	SHEET NO.
742	(39BR)BDR	OGLE	16	3
CONTRACT NO. 64R12				
ILLINOIS FED. AID PROJECT				

* = SPECIALTY ITEM

SUMMARY OF QUANTITIES				CONSTRUCTION CODE	
				80% FEDERAL	20% STATE
CODE NO. *	ITEM * *	UNIT	TOTAL QUANTITY	BRIDGE	ROADWAY
				SN 071-0072	RURAL
70300150	SHORT TERM PAVEMENT MARKING REMOVAL	SQ FT	2,416		2,416
70307120	TEMPORARY PAVEMENT MARKING - LINE 4" - TYPE IV TAPE	FOOT	2,380		2,380
70307210	TEMPORARY PAVEMENT MARKING - LINE 24" - TYPE IV TAPE	FOOT	24		24
70400100	TEMPORARY CONCRETE BARRIER	FOOT	388	388	
70400200	RELOCATE TEMPORARY CONCRETE BARRIER	FOOT	388	24	
70600250	IMPACT ATTENUATORS, TEMPORARY (NON- REDIRECTIVE), TEST LEVEL 3	EACH	2	2	
70600350	IMPACT ATTENUATORS, RELOCATE (NON- REDIRECTIVE), TEST LEVEL 3	EACH	2	2	
78001110	MODIFIED URETHANE PAVEMENT MARKING LINE 4"	FOOT	3,160		3,160
78200011	BARRIER WALL REFLECTORS, TYPE C	EACH	49	49	
X0325201	SHOULDER RUMBLE STRIP REMOVAL	SQ FT	238		238
X0325748	ACRYLIC COATING	SQ YD	12	12	
X0325749	FIBER WRAP	SQ FT	191	191	
X5030250	BRIDGE DECK GROOVING (LONGITUDINAL)	SQ YD	528.7	528.7	
X7820007	GUARDRAIL REFLECTORS, TYPE C (SPECIAL)	EACH	49		49
Z0012130	BRIDGE DECK SCARIFICATION 3/4"	SQ YD	619.5	619.5	

MODEL: Ddmbr FILE NAME: \\s3\project\100220229 - MO 11\Submittal\7-28-22\25291-C-Plan\Detail L 2-SQ0.dgn

HAMILTON CONSULTING ENGINEERS, INC.
 3230 Executive Drive, Joliet, Illinois 60431
 Ph: (815) 730-3444 Fax: (815) 730-6703
 E LICENSE NO. 184-023203
 © 2020 HAMILTON CONSULTING ENGINEERS, INC.

DRAWN - DWS	REVISED -
CHECKED - HJH	REVISED -
DATE -	REVISED -
PLOT SCALE = 2.0015" / in.	
PLOT DATE = 8/9/2022	

**STATE OF ILLINOIS
DEPARTMENT OF TRANSPORTATION**

**IL 2 CROSSING DRAINAGE DITCH
SCHEDULE OF QUANTITIES**

SCALE: SHEET 3 OF SHEETS STA. TO STA.

RTE.	SECTION	COUNTY	SHEETS	SHEET NO.
742	(39BR)BDR	OGLE	16	4
CONTRACT NO. 64R12				
ILLINOIS FED. AID PROJECT				

Type C Reflector (typ.)
See IDOT Standards
704001 & 782006

Type A Reflector (typ.)
See IDOT Standards
704001 & 782006

14'-0" Clear Width
Stage I Detour

21'-0" Work Zone
Stage I Construction

White Temporary
Pavement Marking
See IDOT Std. 701321

Temporary Conc Barrier
See IDOT Std. 704001

Stage Removal Line

12.0' Lane Width

2.0' 2.0' 1.0' 2.8'

Roadway Centerline

Survey Centerline

SN 071-0072

STAGE I

Type A Reflector (typ.)
See IDOT Standards
704001 & 782006

Type C Reflector (typ.)
See IDOT Standards
704001 & 782006

21'-0" Work Zone
Stage II Construction

14'-0" Clear Width
Stage II Detour

Temporary Conc Barrier
See IDOT Std. 704001

White Temporary
Pavement Marking
See IDOT Std. 701321

Stage Removal Line

1.0' 2.8' 2.0'

12.0' Lane Width

Roadway Centerline

Survey Centerline

SN 071-0072

STAGE II

MODEL: RUCDELXMMES
FILE NAME: STAGE I

HAMILTON CONSULTING ENGINEERS, INC.
3230 Executive Drive, Joliet, Illinois 60431
Ph: (815) 730-3444 Fax: (815) 730-6703
E LICENSE NO. 184-003005
© 2020 HAMILTON CONSULTING ENGINEERS, INC.

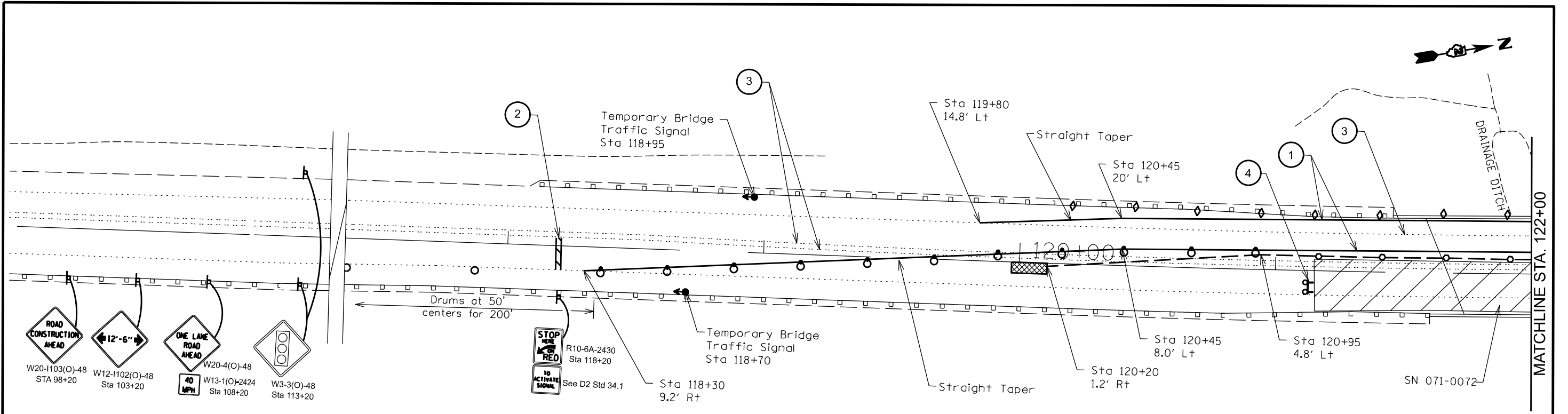
USER NAME = \$USERS	DESIGNED -	REVISED -
PLOT SCALE = \$SCALE\$	DRAWN - MGB	REVISED -
PLOT DATE = \$DATES	CHECKED -	REVISED -
	DATE -	REVISED -

**STATE OF ILLINOIS
DEPARTMENT OF TRANSPORTATION**

**IL 2 CROSSING DRAINAGE DITCH
STAGING TYPICAL SECTION**

SCALE: NTS SHEET 4 OF SHEETS STA. TO STA.

F.A.P. RTE.	SECTION	COUNTY	TOTAL SHEETS	SHEET NO.
742	(39BR)BDR	OGLE	16	6
CONTRACT NO. 64R12				
ILLINOIS FED. AID PROJECT				



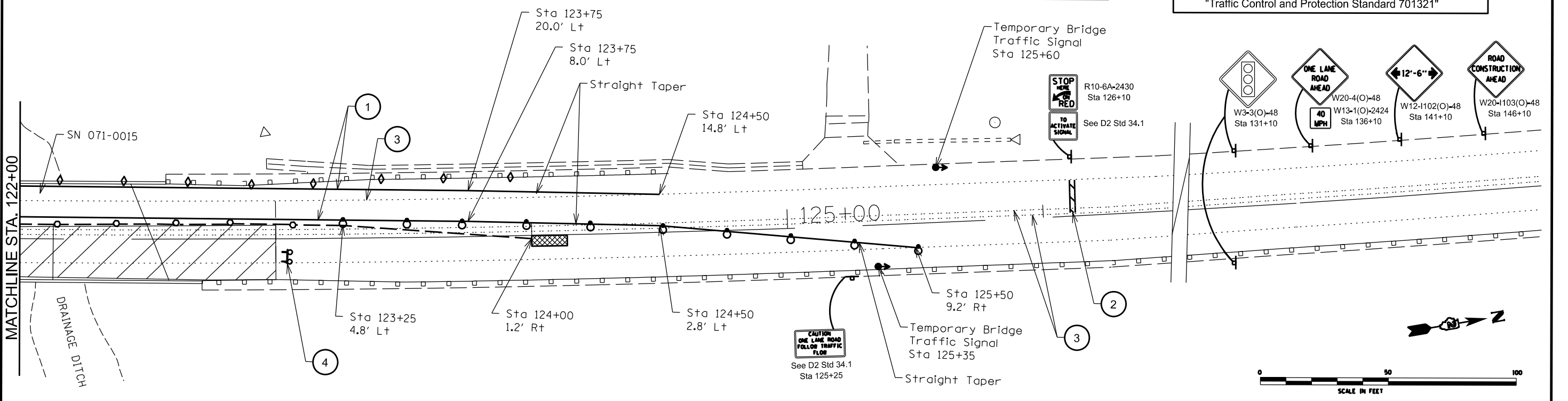
NOTE: All barricades, drums, vertical panels and cones shall be offset and spaced in accordance with IDOT Standard 701321.

SYMBOLS

Work area	Temporary impact attenuator, non-redirective, test level 3.
Drum. See IDOT Std 701901.	Temp. concrete barrier. See IDOT Std 704001.
Drum with steady burning bi-directional light. See IDOT Std 701901.	Temporary bridge traffic signal.
Crystal, bidirectional guardrail/ bridge rail reflector, type C. See IDOT Std 782006.	Sign on portable or permanent support.
Type III barricade with flashing lights. See IDOT Std 701901.	Type A Reflector. Cost included in "Temporary Concrete Barrier" & "Relocate Temporary Conc. Barrier". See IDOT Std 704001

CALLOUT INDEX

- ① Pavement Marking Tape, Type IV, 4" White
- ② Pavement Marking Tape, Type IV, 24" White
- ③ Pavement Marking Blackout Tape, 6"
- ④ Type III Barricade to be placed when no work is being performed.
- ⑤ 3 barrels at 4' centers. Cost included in item "Traffic Control and Protection Standard 701321"



HAMILTON CONSULTING ENGINEERS, INC.
 3230 Executive Drive, Joliet, Illinois 60431
 Ph: (815) 730-4444 Fax: (815) 730-6703
 IL LICENSE NO. 184-003205
 © 2020 HAMILTON CONSULTING ENGINEERS, INC.

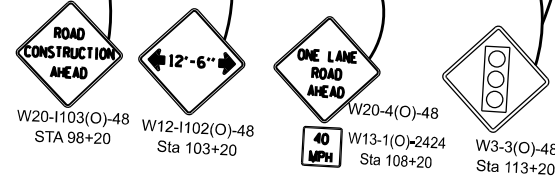
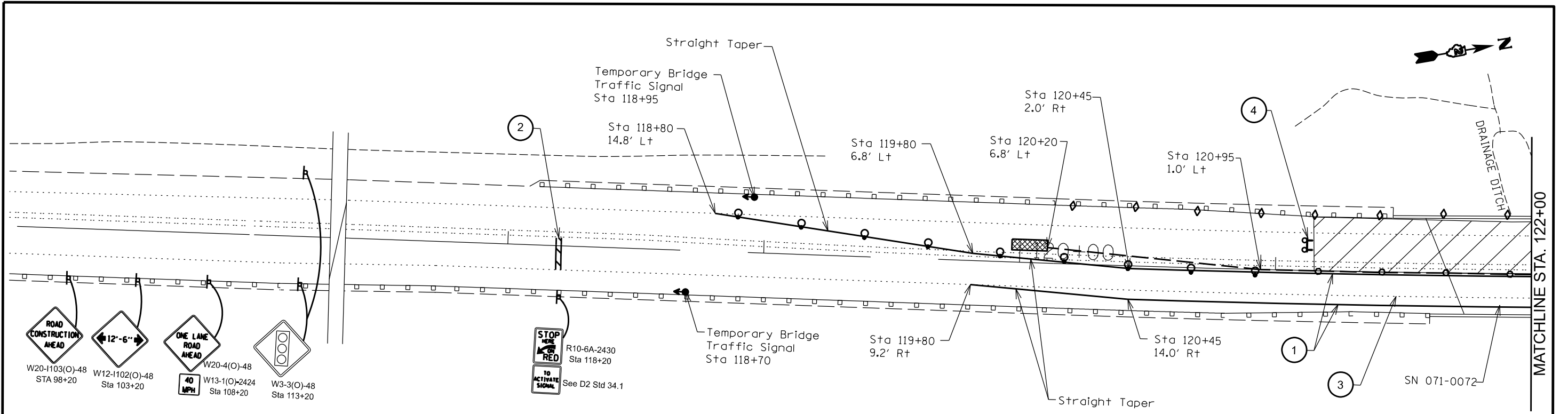
USER NAME = SUSERS	DESIGNED -	REVISED -
PLOT SCALE = \$SCALE\$	DRAWN -	REVISED -
PLOT DATE = \$DATES	CHECKED -	REVISED -
	DATE -	REVISED -

**STATE OF ILLINOIS
 DEPARTMENT OF TRANSPORTATION**

**IL 2 CROSSING DRAINAGE DITCH
 TRAFFIC CONTROL STAGE 1 PLAN SHEET**

SCALE: 1"=20'
 SHEET OF SHEETS STA. 98+20 TO STA. 146+10

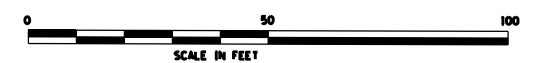
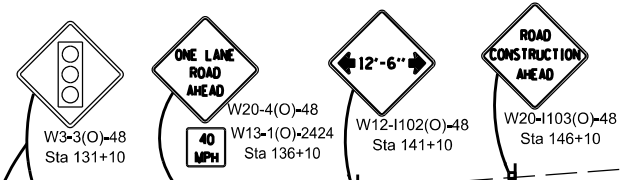
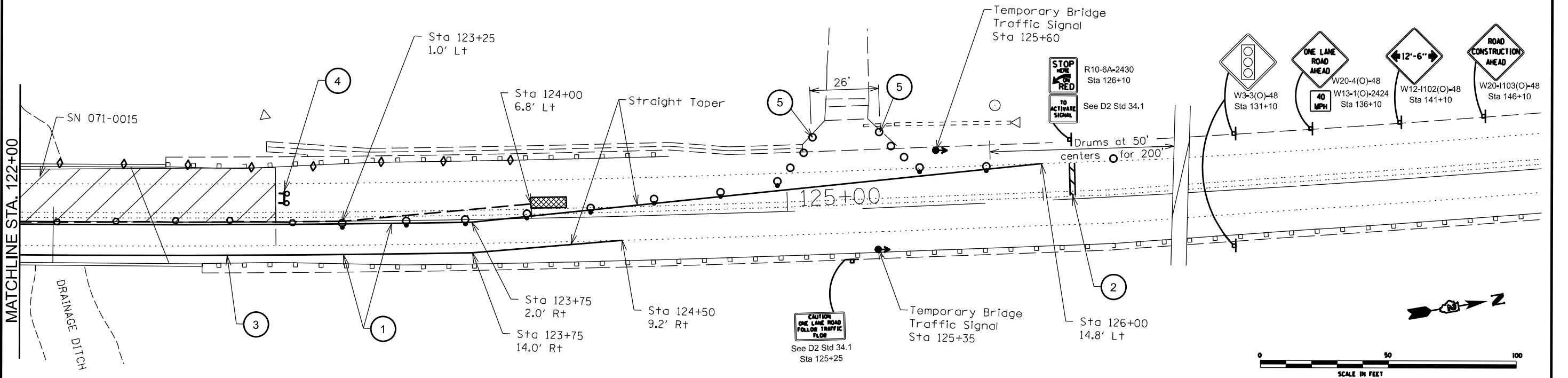
F.A.P. RTE. 742	SECTION (39BR)BDR	COUNTY OGLE	TOTAL SHEETS 16	SHEET NO. 7
CONTRACT NO. 64R12				ILLINOIS FED. AID PROJECT



SYMBOLS	
	Work area
	Drum. See IDOT Std 701901.
	Drum with steady burning bi-directional light. See IDOT Std 701901.
	Crystal, bidirectional guardrail/ bridge rail reflector, type C. See IDOT Std 782006.
	Type III barricade with flashing lights. See IDOT Std 701901.
	Temporary impact attenuator, non-redirective, test level 3.
	Temp. concrete barrier. See IDOT Std 704001.
	Temporary bridge traffic signal.
	Sign on portable or permanent support.
	Type A Reflector. Cost included in "Temporary Concrete Barrier" & "Relocate Temporary Conc. Barrier". See IDOT Std 704001

CALLOUT INDEX	
①	Pavement Marking Tape, Type IV, 4" White
②	Pavement Marking Tape, Type IV, 24" White
③	Pavement Marking Blackout Tape, 6"
④	Type III Barricade to be placed when no work is being performed.
⑤	3 barrels at 4' centers. Cost included in item "Traffic Control and Protection Standard 701321"

NOTE: All barricades, drums, vertical panels and cones shall be offset and spaced in accordance with IDOT Standard 701321.



MODEL: SMODELNAMES
FILE NAME: SHEETS

HAMILTON CONSULTING ENGINEERS, INC.
3230 Executive Drive, Joliet, Illinois 60431
Ph: (815) 730-4444 Fax: (815) 730-6703
IL LICENSE NO. 184-003205
© 2020 HAMILTON CONSULTING ENGINEERS, INC.

USER NAME = SUSERS	DESIGNED -	REVISED -
PLOT SCALE = \$SCALE\$	DRAWN -	REVISED -
PLOT DATE = \$DATES	CHECKED -	REVISED -
	DATE -	REVISED -

**STATE OF ILLINOIS
DEPARTMENT OF TRANSPORTATION**

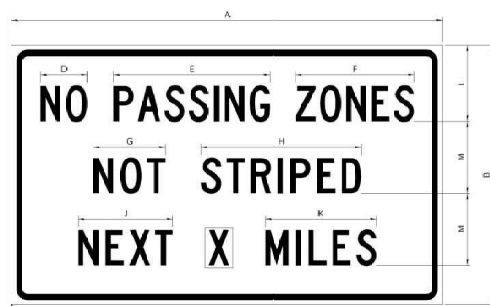
**IL 2 CROSSING DRAINAGE DITCH
TRAFFIC CONTROL STAGE 2 PLAN SHEET**

SCALE: 1"=20' SHEET OF SHEETS STA. 98+20 TO STA. 146+10

F.A.P. RTE. 742	SECTION (39BR)BDR	COUNTY OGLE	TOTAL SHEETS 16	SHEET NO. 8
CONTRACT NO. 64R12			ILLINOIS FED. AID PROJECT	

WORK ZONE SIGN DETAILS

ILLINOIS STANDARD G20-1100



SIGN SIZE	DIMENSIONS											
	A	B	C	D	E	F	G	H	J	K	L	M
60 x 36	60.09	36.00	2.25	6.4	23.00	15.40	10.00	22.40	13.20	13.50	10.50	19.00

SIGN SIZE	SERIES BY LINE			MARGIN	BORDER
	1	2	3		
60 x 36	3C	3C	3C	0.625	0.875

GENERAL NOTES
 All work to furnish and install these signs shall be included in the cost of the specified traffic control standards and shall not be paid separately.
 All Illinois Standard signs shall conform to the latest edition of the "Illinois Standard Highway Signs Book" in effect on the date of invitation for bids.
 Signs shall meet the applicable portions of Sections 701 and 720 of the Standard Specifications.
 All dimensions are in inches unless otherwise noted.

Sign not to scale

ILLINOIS STANDARD W8-1107



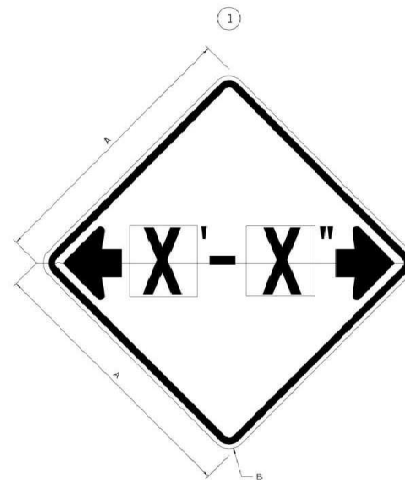
SIGN SIZE	DIMENSIONS								
	A	B	C	D	E	F	G	H	I
48 x 48	48.09	3.00	25.00	34.80	34.20	24.94	9.00	1.00	10.00

SIGN SIZE	SERIES BY LINE			MARGIN	BORDER
	1	2	3		
48 x 48	7C	7C	7C	1.250	0.750

Sign not to scale

WORK ZONE SIGN DETAILS

ILLINOIS STANDARD W12-1102



SIGN SIZE	DIMENSIONS	
	A	B
48 x 48	48.00	3.00

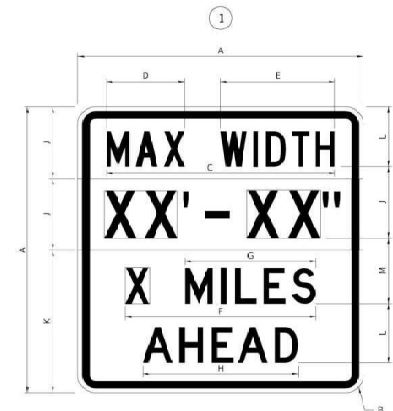
SIGN SIZE	SERIES BY LINE			MARGIN	BORDER
	1	2	3		
48 x 48	12C			0.750	1.250

Sign not to scale

GENERAL NOTES
 All work to furnish and install these signs shall be included in the cost of the specified traffic control standards and shall not be paid separately.
 All Illinois Standard signs shall conform to the latest edition of the "Illinois Standard Highway Signs Book" in effect on the date of invitation for bids.
 Signs shall meet the applicable portions of Sections 701 and 720 of the Standard Specifications.
 All dimensions are in inches unless otherwise noted.

Illinois Standard signs W12-1102 and W12-1103 shall be used as described in the special provisions.

ILLINOIS STANDARD W12-1103



SIGN SIZE	DIMENSIONS											
	A	B	C	D	E	F	G	H	J	K	L	M
48 x 48	46.30	3.00	38.40	13.20	19.20	32.00	22.20	26.20	32.00	24.00	19.00	11.00

SIGN SIZE	SERIES BY LINE				MARGIN	BORDER
	1	2	3	4		
48 x 48	6C	8D	6D	6D	0.750	1.250

Sign not to scale

XX'-XX'' WIDTH AND X MILES ARE VARIABLE TOP AND BOTTOM OF BACKGROUND WHITE

STATE OF ILLINOIS DEPARTMENT OF TRANSPORTATION
 REGION 2 / DISTRICT 2 STANDARD
 SCALE: SHEET 3 OF 4 SHEETS STA. TO STA. CONTRACT NO. 64R12
WORK ZONE SIGN DETAILS SHEET 1 OF 4 34.1

STATE OF ILLINOIS DEPARTMENT OF TRANSPORTATION
 REGION 2 / DISTRICT 2 STANDARD
 SCALE: SHEET 2 OF 4 SHEETS STA. TO STA. CONTRACT NO. 64R12
WORK ZONE SIGN DETAILS SHEET 2 OF 4 34.1

WORK ZONE SIGN DETAILS

ROAD CLOSED TO OVERSIZED LOADS



SIGN SIZE	DIMENSIONS											
	A	B	C	D	E	F	G	H	J	K	L	M
60 x 36	60.09	36.00	2.25	6.4	23.00	15.40	10.00	22.40	13.20	13.50	10.50	19.00

SIGN SIZE	SERIES BY LINE			MARGIN	BORDER
	1	2	3		
60 x 36	3C	3C	3C	0.625	0.875

Sign not to scale

STOP LINE SIGN FOR TEMPORARY SIGNALS



SIGN SIZE	SERIES BY LINE		
	1	2	3
24 x 24	4C	4C	4C

Sign not to scale

GENERAL NOTES
 All work to furnish and install these signs shall be included in the cost of the specified traffic control standards and shall not be paid separately.
 All Illinois Standard signs shall conform to the latest edition of the "Illinois Standard Highway Signs Book" in effect on the date of invitation for bids.
 Signs shall meet the applicable portions of Sections 701 and 720 of the Standard Specifications.
 All dimensions are in inches unless otherwise noted.

ENTRANCE SIGN FOR USE WITH TEMPORARY SIGNALS



SIGN SIZE	DIMENSIONS											
	A	B	C	D	E	F	G	H	J	K	L	M
48 x 48	48.00	3.00	25.00	34.80	34.20	24.94	9.00	1.00	10.00	13.20	13.50	10.50

SIGN SIZE	SERIES BY LINE			MARGIN	BORDER
	1	2	3		
48 x 48	12C			0.750	1.250

Table of Widths and Spaces

C	A	U	T	I	O	N	22.31
3.36	4.30	3.36	3.04	0.94	3.52	3.36	22.31

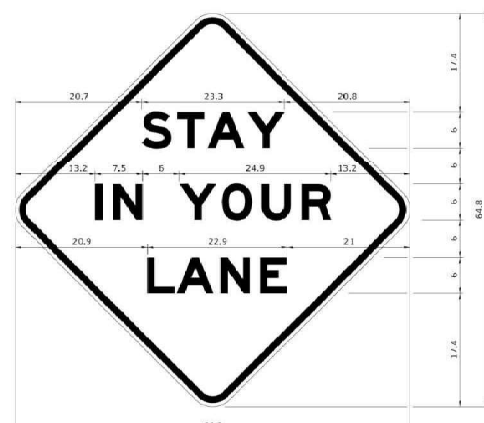
Table of Letter and Object Lefts

S	T	A	Y
23.7	26.8	31.8	38.3

GENERAL NOTES
 All work to furnish and install these signs shall be included in the cost of the specified traffic control standards and shall not be paid separately.
 All Illinois Standard signs shall conform to the latest edition of the "Illinois Standard Highway Signs Book" in effect on the date of invitation for bids.
 Signs shall meet the applicable portions of Sections 701 and 720 of the Standard Specifications.
 All dimensions are in inches unless otherwise noted.

WORK ZONE SIGN DETAILS

STAY IN YOUR LANE



SIGN SIZE	DIMENSIONS											
	A	B	C	D	E	F	G	H	J	K	L	M
48 x 48	46.30	3.00	38.40	13.20	19.20	32.00	22.20	26.20	32.00	24.00	19.00	11.00

SIGN SIZE	SERIES BY LINE				MARGIN	BORDER
	1	2	3	4		
48 x 48	6C	8D	6D	6D	0.750	1.250

Sign not to scale

STATE OF ILLINOIS DEPARTMENT OF TRANSPORTATION
 REGION 2 / DISTRICT 2 STANDARD
 SCALE: SHEET 3 OF 4 SHEETS STA. TO STA. CONTRACT NO. 64R12
WORK ZONE SIGN DETAILS SHEET 3 OF 4 34.1

STATE OF ILLINOIS DEPARTMENT OF TRANSPORTATION
 REGION 2 / DISTRICT 2 STANDARD
 SCALE: SHEET 4 OF 4 SHEETS STA. TO STA. CONTRACT NO. 64R12
WORK ZONE SIGN DETAILS SHEET 4 OF 4 34.1

MODEL, SPECIFICATIONS, DETAILS, SIGNAGES

HAMILTON CONSULTING ENGINEERS, INC.
 3230 Executive Drive, Joliet, Illinois 60431
 Ph: (815) 730-1444 Fax: (815) 730-6703
 LICENSE NO. 184-003005
 © 2020 HAMILTON CONSULTING ENGINEERS, INC.

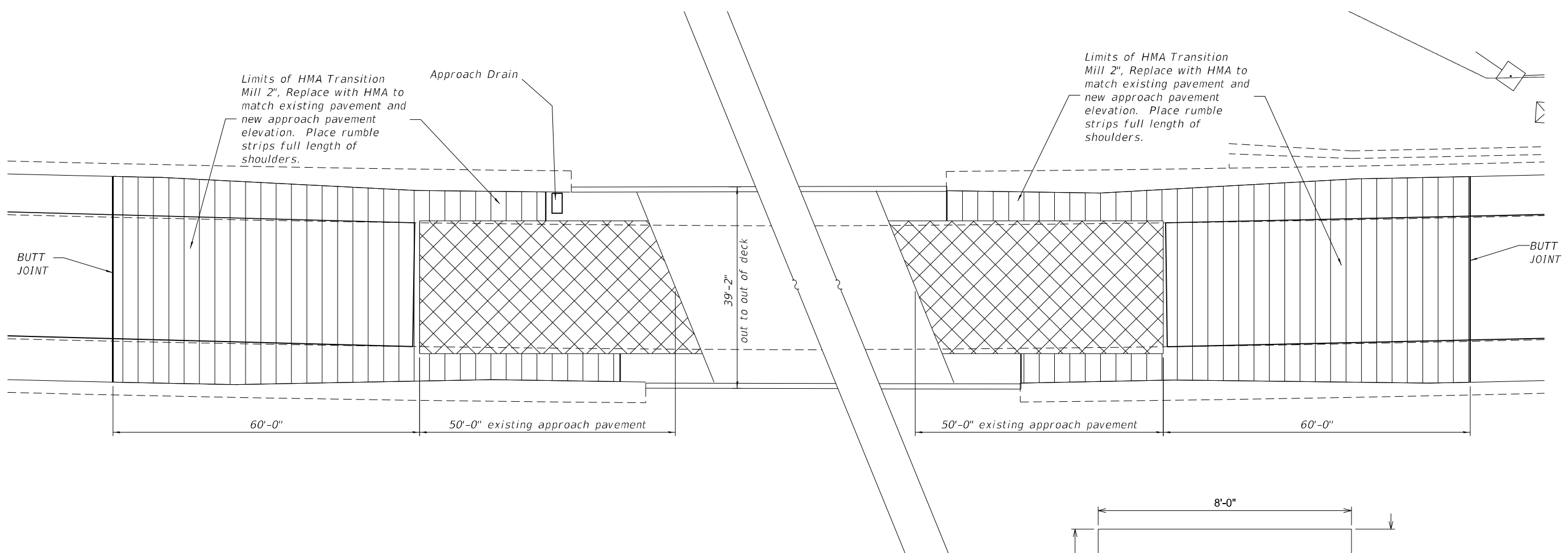
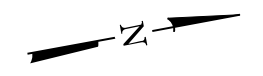
USER NAME = \$USERS	DESIGNED -	REVISED -
PLOT SCALE = \$SCALE\$	DRAWN - DWS	REVISED -
PLOT DATE = \$DATES	CHECKED -	REVISED -
	DATE -	REVISED -

STATE OF ILLINOIS DEPARTMENT OF TRANSPORTATION

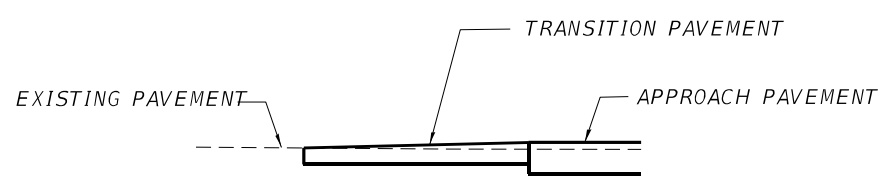
IL 2 CROSSING DRAINAGE DITCH DISTRICT 2 STANDARD 34.1

SCALE: NA SHEET 2 OF SHEETS STA. TO STA.

F.A.P. RTE. 742	SECTION (39BR)BDR	COUNTY OGLE	TOTAL SHEETS 16	SHEET NO. 9
CONTRACT NO. 64R12				
ILLINOIS FED. AID PROJECT				

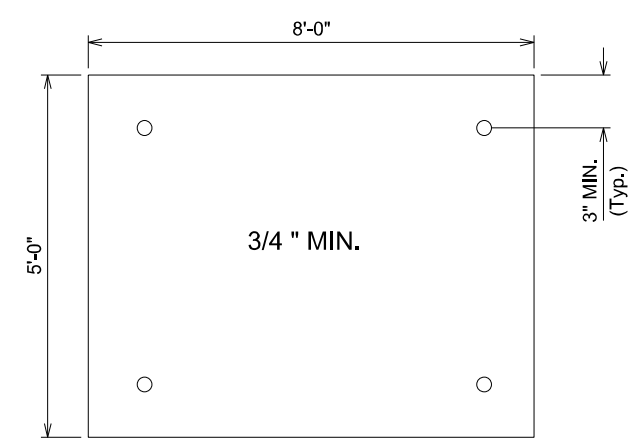


PLAN



TYPICAL APPROACH DETAIL

Location and Mixture Use(s):	Resurfacing		
	Surface	Binder	Shoulders
PG:	PG 58-28	PG 58-28	PG 58-28
Design Air Voids	4.0 @ N50	4.0 @ N50	4.0 @ N50
Mixture Composition	IL 9.5	IL 9.5, or 9.5FG	IL 9.5, or 9.5FG
Friction Aggregate	C	N/A	C
Mix Weight	112 lb/sy/in	N/A	112 lb/sy/in
Quality Management Program	QC/QA	QC/QA	QC/QA
Sublot Size	N/A	N/A	N/A
Material Transfer Device	N/A	N/A	N/A



STEEL PLATE DETAIL
NTS

- NOTES:
1. THE CONTRACTOR SHALL MAKE EVERY EFFORT DURING CONSTRUCTION TO PROTECT THE APPROACH DRAIN WITH STEEL PLATES OR APPROVED EQUALS. SEE STEEL PLATE DETAIL BELOW. THIS WORK SHALL BE INCIDENTAL AND INCLUDED AS PART OF "TRAFFIC CONTROL AND PROTECTION STANDARD 701042".
 2. DURING MOT STAGE 1, THE APPROACH DRAIN AT THE SW CORNER SHALL BE PROTECTED WITH 3/4" (MIN) STEEL PLATES ANCHORED INTO THE PAVEMENT.
 3. THE EDGES OF THE STEEL PLATE SHALL BE TAPERED A MINIMUM OF 1' WITH HMA TO ELIMINATE THE BUMP.

MODEL: Default
FILE NAME: \\kpff.com\dfs\Bridges\22000229 (WO 11 64R12 SN 071-0072)\02_Design\SN 071-0072_Plan and Elevation.dgn



USER NAME =	DESIGNED -	REVISED -
PLOT SCALE =	CHECKED -	REVISED -
PLOT DATE =	DRAWN -	REVISED -
	CHECKED -	REVISED -

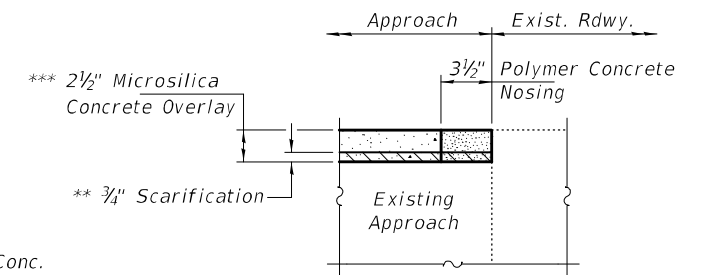
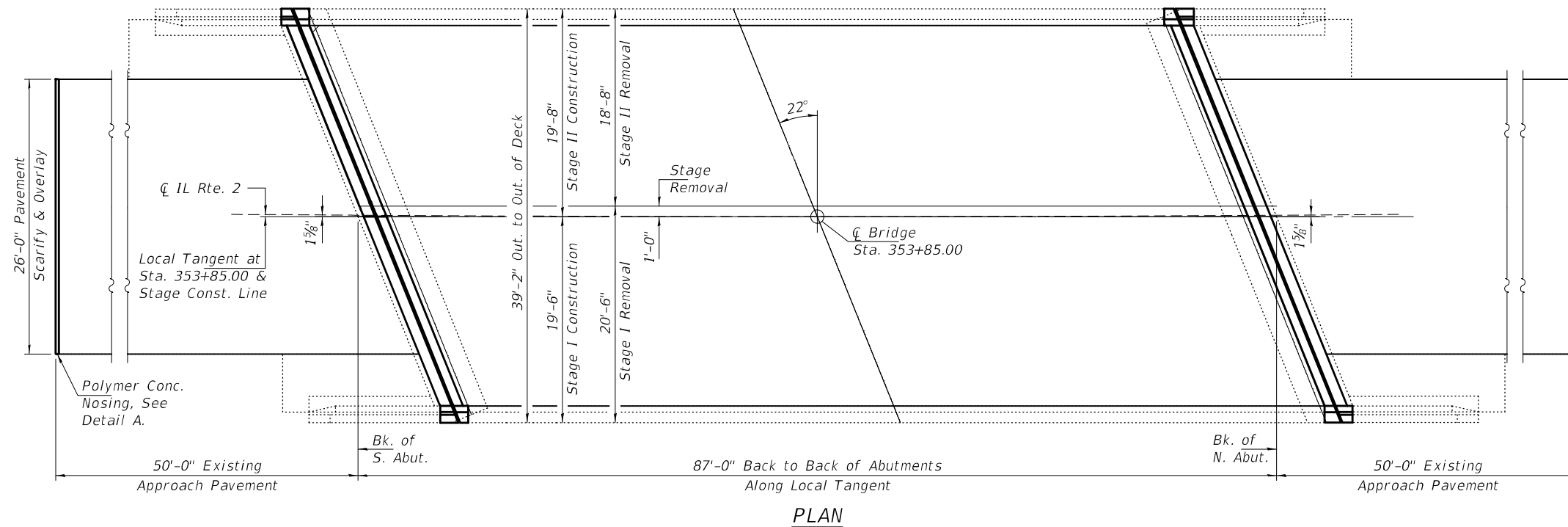
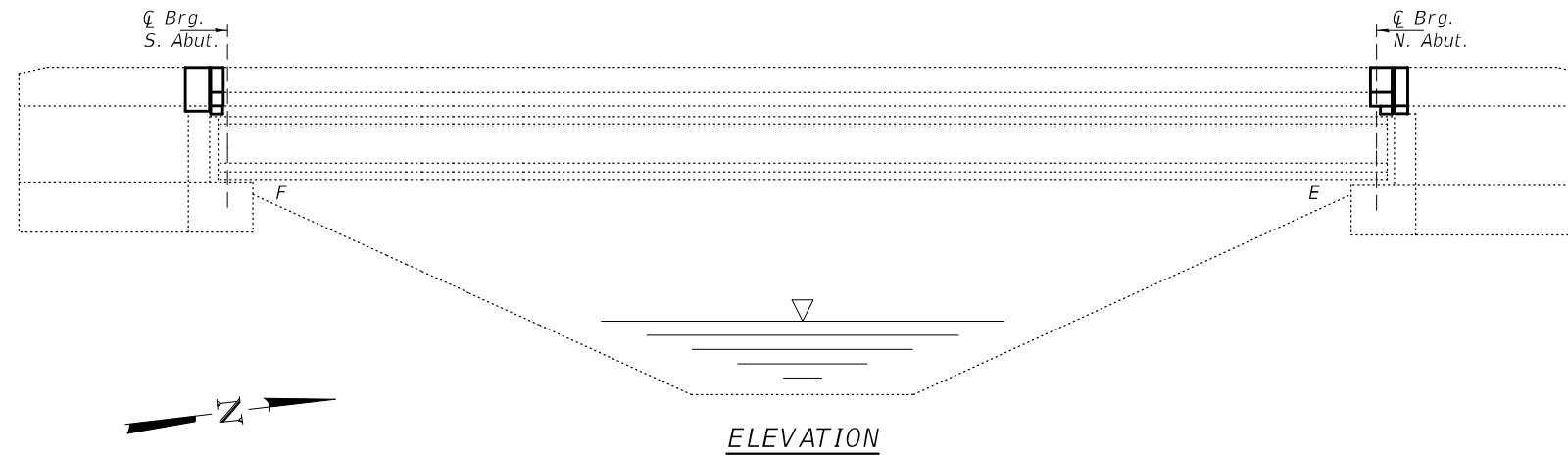
STATE OF ILLINOIS
DEPARTMENT OF TRANSPORTATION

ILLINOIS ROUTE 2 OVER DRAINAGE DITCH SN 071-0072
PAVEMENT REMOVAL PLAN

F.A. RTE.	SECTION	COUNTY	TOTAL SHEETS	SHEET NO.
742	(38BR)BDR	OGLE	16	10
CONTRACT NO. 64R12				
ILLINOIS FED. AID PROJECT				

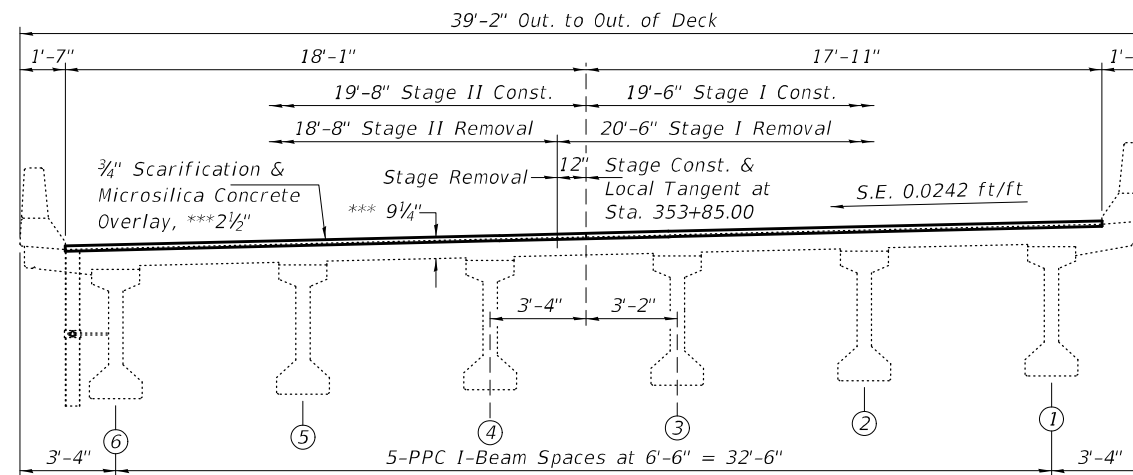
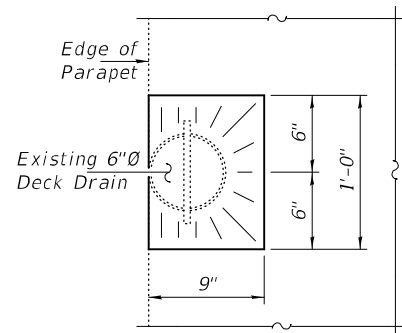
GENERAL NOTES

All structural steel shall conform to AASHTO Classification M-270 Gr. 36, unless otherwise noted.
 Plan dimensions and details relative to existing plans are subject to nominal construction variations. The Contractor shall field verify existing dimensions and details affecting new construction and make necessary approved adjustments prior to construction or ordering of materials. Such variations shall not be cause for additional compensation for a change in scope of the work, however, the Contractor will be paid for the quantity actually furnished at the unit price bid for the work.
 Reinforcement bars designated (E) shall be epoxy coated.
 Existing reinforcement bars extending into the removal area shall be cleaned, straightened and incorporated into the new construction. Any reinforcement bars that are damaged during concrete removal shall be replaced with an approved bar splicer or anchorage system. Cost included with Concrete Removal.
 Joint openings shall be adjusted according to Article 520.04 of the Std. Specs. when the deck is poured at an ambient temperature other than 50° F.



DETAIL A

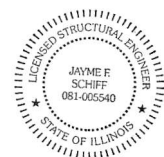
** Cost of 3/4" Scarification included with Bridge Deck Scarification, 3/4".
 *** Prior to 1/4" Diamond Grinding



TOTAL BILL OF MATERIAL

ITEM	UNIT	QUANTITY
Concrete Removal	Cu. Yd.	7.1
Concrete Superstructure	Cu. Yd.	7.7
Reinforcement Bars, Epoxy Coated	Pound	790
Bar Splicers	Each	12
Preformed Joint Strip Seal	Foot	82
Bridge Deck Scarification, 3/4"	Sq. Yd.	619.5
Bridge Deck Microsilica Concrete Overlay, 2 1/2"	Sq. Yd.	616.2
Polymer Concrete	Cu. Ft.	3.2
Bridge Deck Grooving (Longitudinal)	Sq. Yd.	528.7
Diamond Grinding (Bridge Section)	Sq. Yd.	632
P.P.C. I-Beam Repair	Sq. Ft.	16
Fiber Wrap	Sq. Ft.	191
Acrylic Coating	Sq. Yd.	12
Protective Coat	Sq. Yd.	638.9

* New Concrete Superstructure areas & overlay only.



Expires: November 30, 2022

DESIGNED - Chi-Cheung Chau
 CHECKED - Jeffrey S. Burke
 DRAWN - STEFFEN
 CHECKED - CCC JSB

PASSED

Jayme F. Schiff
 ENGINEER OF BRIDGES AND STRUCTURES

DATE - SEPTEMBER 19, 2022

REVISED -
 REVISED -

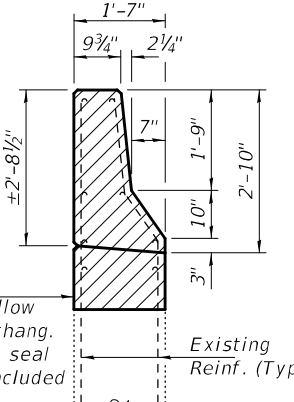
STATE OF ILLINOIS
 DEPARTMENT OF TRANSPORTATION

GENERAL PLAN & ELEVATION
 ILLINOIS ROUTE 2 OVER DRAINAGE DITCH
 SN 071-0072

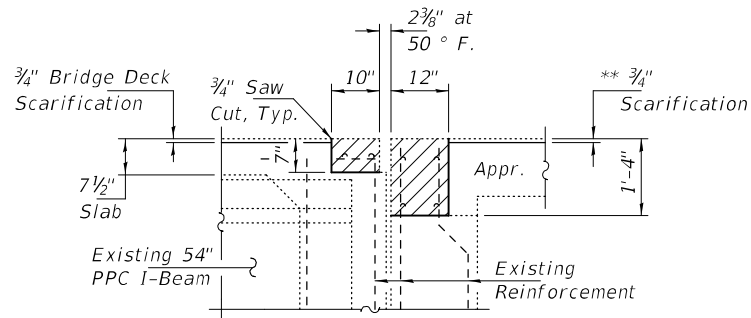
SHEET NO. 1 OF 6 SHEETS

F.A. RTE.	SECTION	COUNTY	TOTAL SHEETS	SHEET NO.
742	(398R)BDR	OGLE	16	11
CONTRACT NO. 64R12				

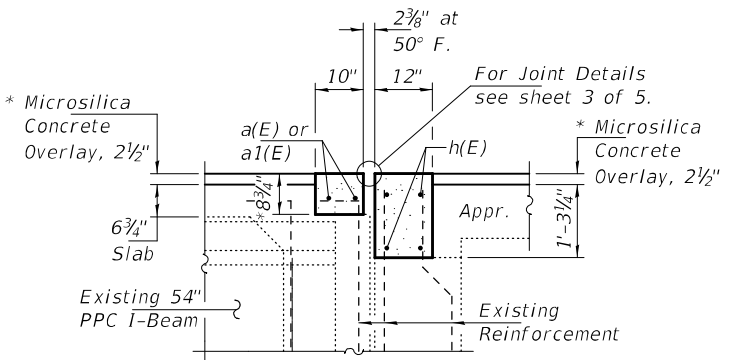
ILLINOIS FED. AID PROJECT



Remove portion of wingwall as required at corners to allow clearance for new deck overhang. Cut reinforcement flush and seal surface with epoxy. Cost included with Concrete Removal.



SECTION C-C
Dims. at Rt. L



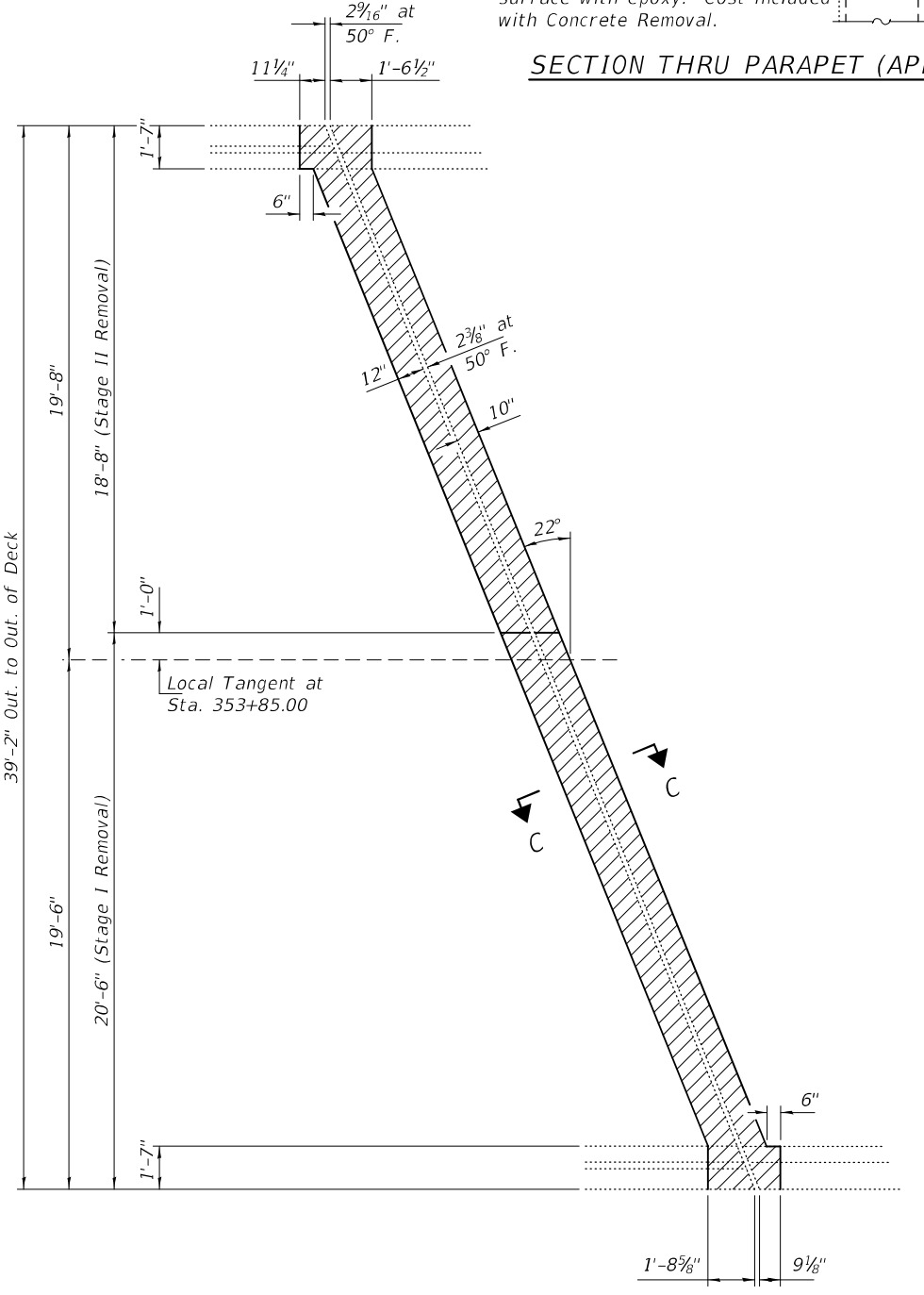
SECTION D-D
Dims. at Rt. L

Notes:
The Contractor shall use extreme care during concrete removal so as not to damage the PPC I-Beam.
Hatched areas indicate Concrete Removal.

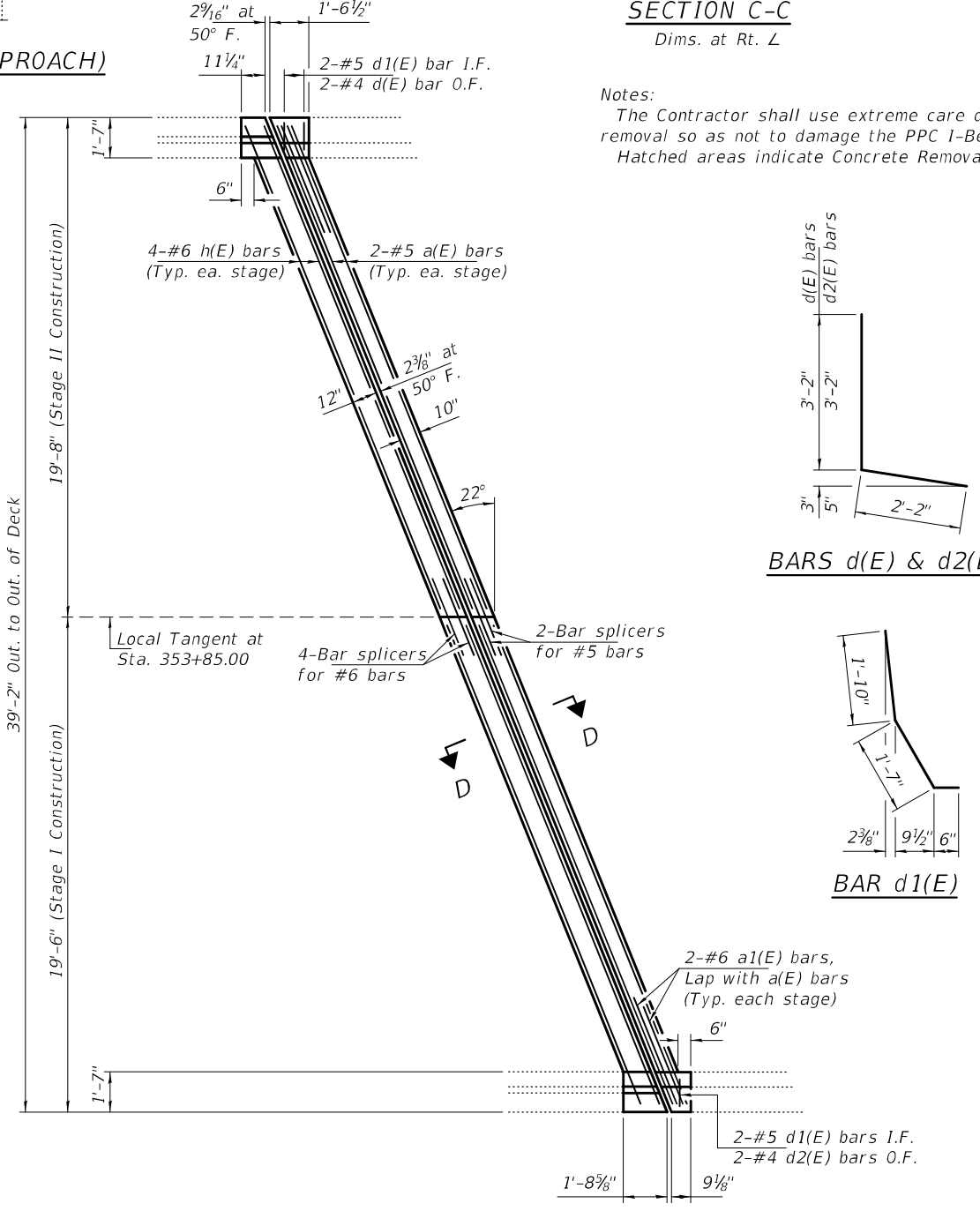
* Prior to 3/4" Diamond Grinding
** Cost of 3/4" Scarification included with Bridge Deck Scarification, 3/4".

SECTION THRU PARAPET (APPROACH)

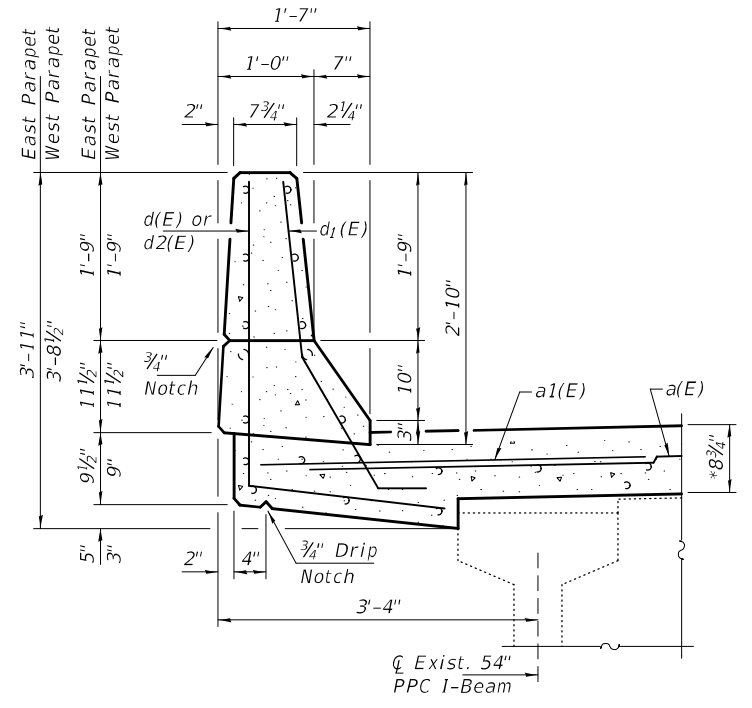
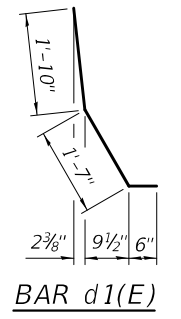
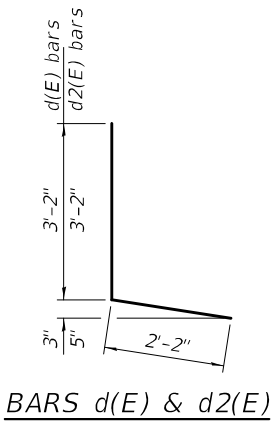
SECTION THRU PARAPET (DECK)



CONCRETE REMOVAL PLAN
(South Abutment shown; North Abutment similar except as noted.)



CONCRETE REPLACEMENT PLAN
(South Abutment shown; North Abutment similar except as noted.)



SECTION THRU PARAPET (DECK)

BILL OF MATERIAL

Bar	No.	Size	Length	Shape
a(E)	8	#5	20'-6"	—
a1(E)	8	#6	4'-6"	—
d(E)	4	#4	5'-4"	L
d1(E)	8	#5	3'-11"	L
d2(E)	4	#4	5'-4"	L
h(E)	16	#6	20'-6"	—
Concrete Removal			Cu. Yd.	7.1
Concrete Superstructure			Cu. Yd.	7.7
Bar Splicers			Each	12
Reinforcement Bars, Epoxy Coated			Pound	790

DESIGNED - CCC
CHECKED - JSB
DRAWN - STEFFEN
CHECKED - CCC JSB

PASSED

 ENGINEER OF BRIDGES AND STRUCTURES

DATE - SEPTEMBER 19, 2022
 REVISED -
 REVISED -

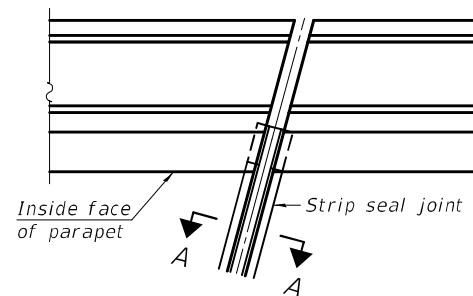
STATE OF ILLINOIS
DEPARTMENT OF TRANSPORTATION

JOINT REMOVAL & REPLACEMENT DETAILS
SN 071-0072

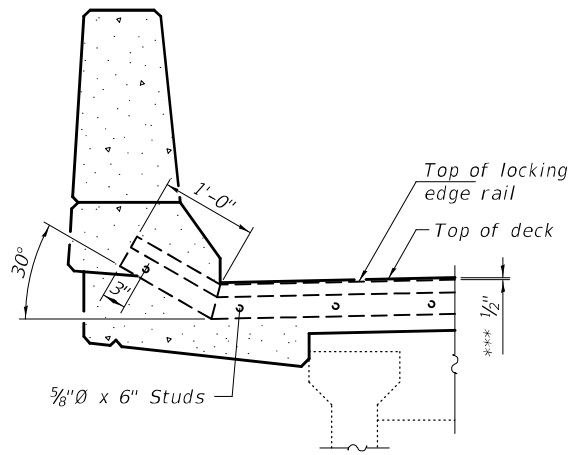
SHEET NO. 2 OF 6 SHEETS

F.A. RTE.	SECTION	COUNTY	TOTAL SHEETS	SHEET NO.
742	(398R)BDR	OGLE	16	12
CONTRACT NO. 64R12				
ILLINOIS FED. AID PROJECT				

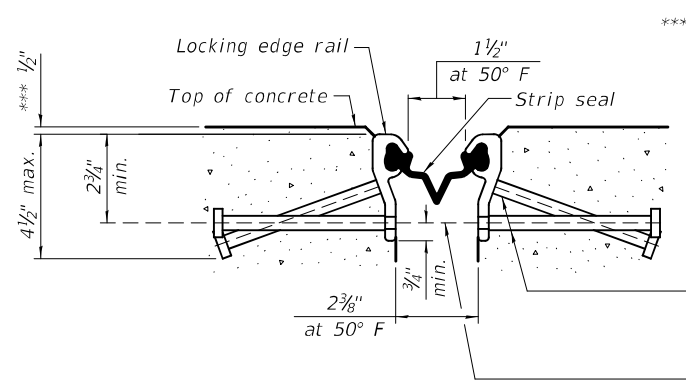
Notes:
 The strip seal shall be made continuous and shall have a minimum thickness of 1/4". The configuration of the strip seal shall match the configuration of the locking edge rails. Open or "webbed" strip seal gland configurations are not permitted. The gland shall be sized for a maximum rated movement of 4 inches.
 The locking edge rails depicted are configured for typical applications and are conceptual only. The actual configuration of the locking edge rails and matching strip seal may vary from manufacturer to manufacturer provided they fit the application and meet the minimum anchorage shown. Flanged edge rails, however, will not be allowed. Locking edge rails may exceed the 4 1/2" maximum depth provided the anchorage system is revised according to the manufacturer's recommendation.
 The manufacturer's recommended installation methods shall be followed.
 All steel components shall be galvanized after fabrication according to Article 520.03 of the Standard Specifications.
 The Maximum space between locking edge rail segments shall be 3/16" and sealed with a suitable sealant; however, any rail joint within 10' measured perpendicular to the face of the curb or parapet shall be welded as shown in the locking edge rail splice detail.
 The concrete opening below the strip seal will vary based on the locking edge rail chosen by the Contractor. Deck and parapet lengths shown elsewhere in the plans are dimensioned to the concrete opening, not the joint opening, and are based on the rolled locking edge rail. If the Contractor elects to use a different locking edge rail, dimensional adjustments may be required. One exception to this would be the strip seal joint at the end of the precast bridge approach slab. For these cases the pavement connector length shall be adjusted, not the length of the bridge approach slab.



FOR SKEWS ≤ 30°
PLAN AT PARAPET



ELEVATION AT PARAPET
 (Skews ≤ 30°)



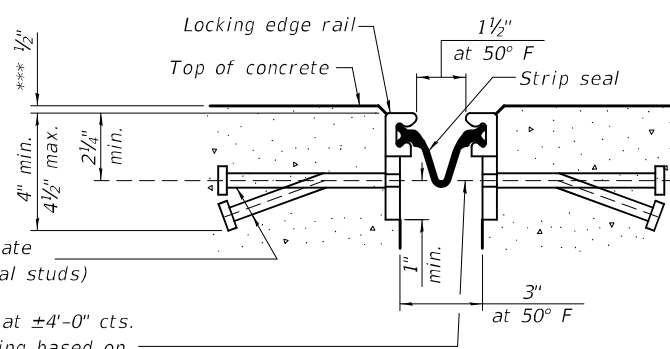
SHOWING ROLLED RAIL JOINT

*** Prior to 1/4" Diamond Grinding.

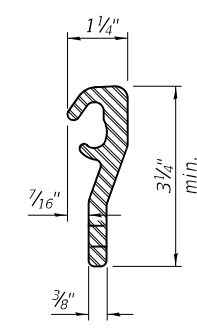
* 3/8"Ø x 6" studs at 6" cts. (alternate angled/bent studs with horizontal studs)
 3/8"Ø threaded rods in 7/16"Ø holes at ±4'-0" cts. for holding the proper joint opening based on the temperature during the deck pour. Place to miss studs. All rods shall be burned, or sawed off flush with the plates after concrete is set.

SECTION A-A

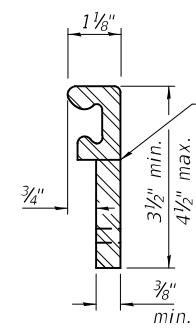
* Granular or solid flux filled headed studs conforming to Article 1006.32 of the Std. Specs., automatically end welded.



SHOWING WELDED RAIL JOINT



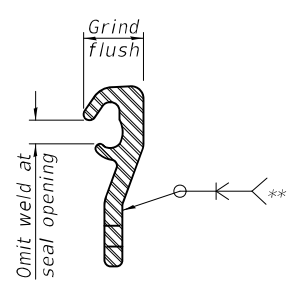
ROLLED (EXTRUDED) RAIL



WELDED RAIL

LOCKING EDGE RAILS

** Back gouge not required if complete joint penetration is verified by mock-up.



LOCKING EDGE RAIL SPLICE

The inside of the locking edge rail groove shall be free of weld residue. Rolled rail shown, welded rail similar.

BILL OF MATERIAL

Item	Unit	Total
Preformed Joint Strip Seal	Foot	82

DESIGNED - CCC
CHECKED - JSB
DRAWN - STEFFEN
CHECKED - CCC JSB

PASSED
 Jayne F. [Signature]
 ENGINEER OF BRIDGES AND STRUCTURES

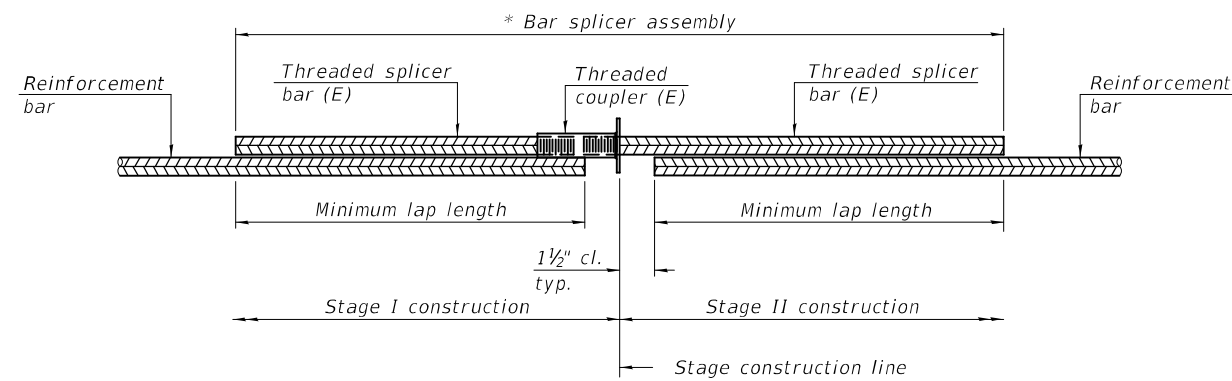
DATE - SEPTEMBER 19, 2022
REVISED -
REVISED -

STATE OF ILLINOIS
 DEPARTMENT OF TRANSPORTATION

PREFORMED JOINT STRIP SEAL DETAILS
 SN 071-0072

SHEET NO. 3 OF 6 SHEETS

F.A. RTE.	SECTION	COUNTY	TOTAL SHEETS	SHEET NO.
742	(39BR)BDR	OGLE	16	13
CONTRACT NO. 64R12			ILLINOIS FED. AID PROJECT	

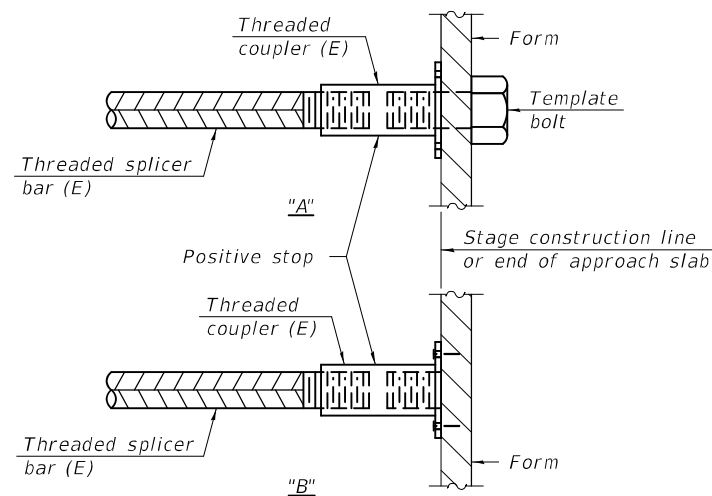


STANDARD BAR SPLICER ASSEMBLY PLAN
 (All components shall be provided from one supplier)

Threaded splicer bar length = min. lap length + 1 1/2" + thread length

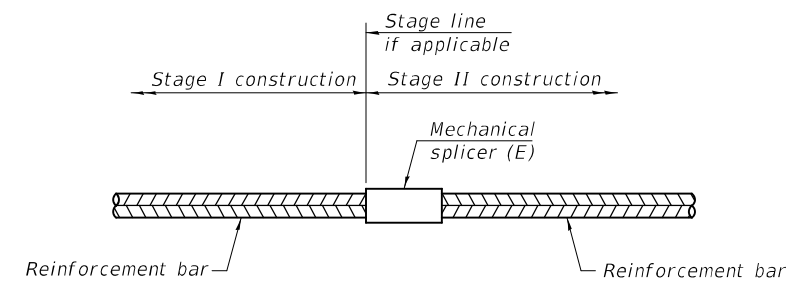
* Epoxy not required on Bar Splicer Assembly components used in conjunction with black bars.

Location	Bar size	No. assemblies required	Minimum lap length
Bridge Deck	#5	4	3'-6"
Abutment	#6	8	4'-0"



INSTALLATION AND SETTING METHODS

"A" : Set bar splicer assembly by means of a template bolt.
 "B" : Set bar splicer assembly by nailing to wood forms or cementing to steel forms.
 (E) : Indicates epoxy coating.



STANDARD MECHANICAL SPLICER

Location	Bar size	No. assemblies required

Notes:
 Splicer bars shall be deformed with threaded ends and have a minimum 60 ksi yield strength.
 All reinforcement shall be lapped and tied to the splicer bars.
 Bar splicer assemblies shall be epoxy coated according to the requirements for reinforcement bars. See Section 508 of the Standard Specifications.
 See approved list of bar splicer assemblies and mechanical splicers for alternatives.

BSD-1

1-1-2020

DESIGNED - CCC
CHECKED - JSB
DRAWN - STEFFEN
CHECKED - CCC JSB

PASSED

Jaime F. Joffe
 ENGINEER OF BRIDGES AND STRUCTURES

DATE - SEPTEMBER 19, 2022

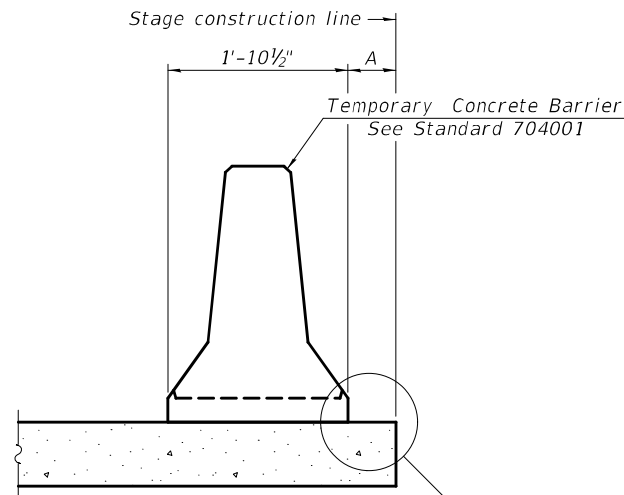
REVISED -
REVISED -

STATE OF ILLINOIS
 DEPARTMENT OF TRANSPORTATION

BAR SPLICER ASSEMBLY & MECHANICAL SPLICER DETAILS
 SN 071-0072

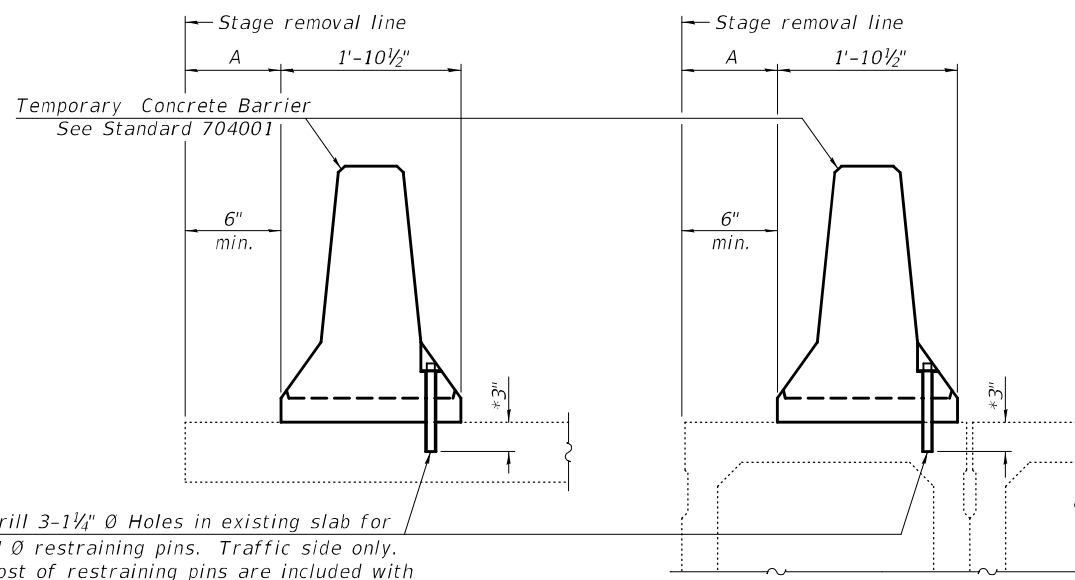
SHEET NO. 4 OF 6 SHEETS

F.A. RTE.	SECTION	COUNTY	TOTAL SHEETS	SHEET NO.
742	(398R)BDR	OGLE	16	14
CONTRACT NO. 64R12			ILLINOIS FED. AID PROJECT	



When "A" is 3'-1" or less, the temporary concrete barrier shall be restrained to the new slab according to Detail I, II or III. No restraint is required when "A" is greater than 3'-1".

NEW SLAB OR NEW DECK BEAM

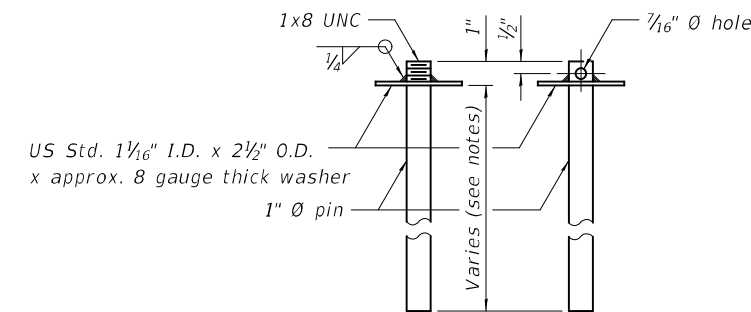


Drill 3-1/4" Ø Holes in existing slab for 1" Ø restraining pins. Traffic side only. Cost of restraining pins are included with Temporary Concrete Barrier. No restraint is required when "A" is greater than 3'-1".

EXISTING SLAB

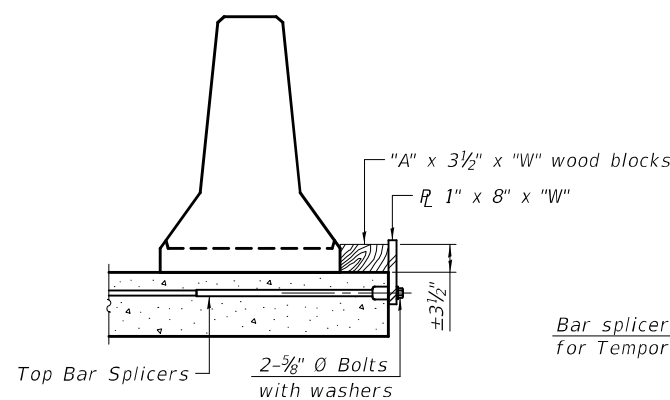
* When hot-mix asphalt wearing surface is present, embedment shall be 3" plus the wearing surface depth.

EXISTING DECK BEAM

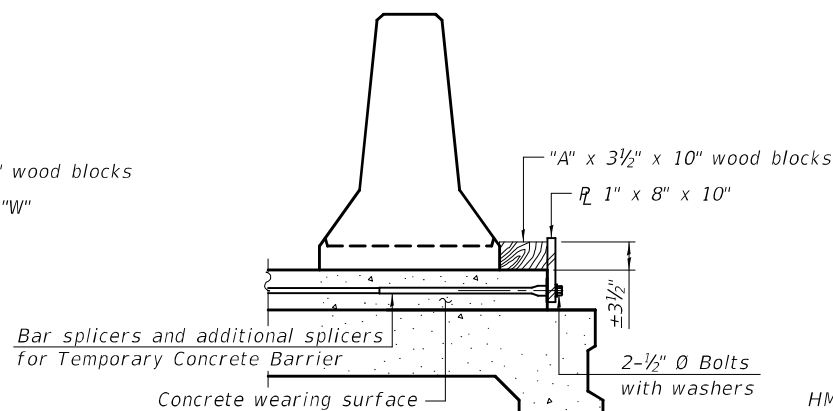


RESTRAINING PIN

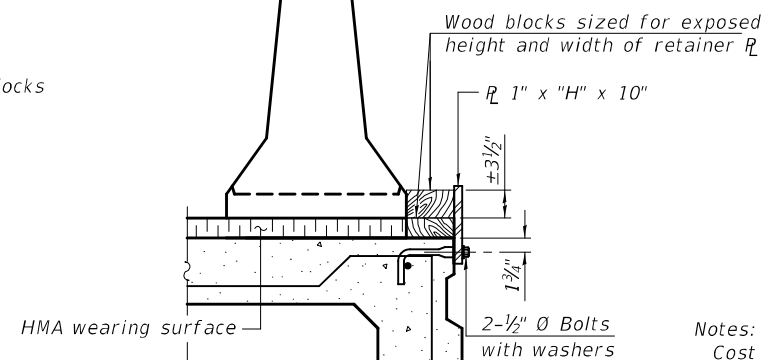
SECTIONS THRU SLAB OR DECK BEAM



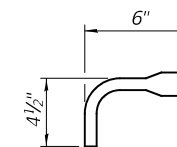
DETAIL I



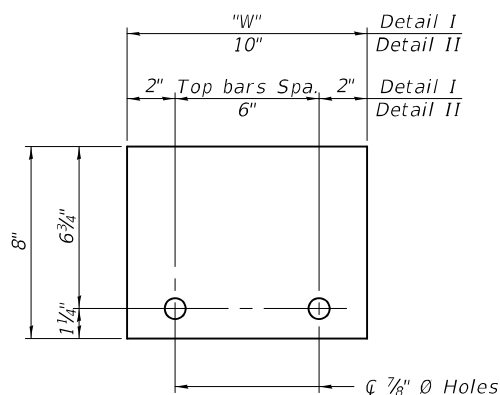
DETAIL II



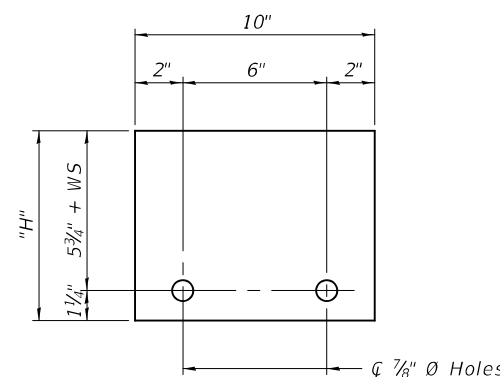
DETAIL III



BAR SPLICER FOR #4 BAR - DETAIL III



STEEL RETAINER R 1" x 8" x "W"
(Detail I and II)



STEEL RETAINER R 1" x "H" x 10"
(Detail III)

Notes:
 Cost of retainer assembly is included with Temporary Concrete Barrier.
 A retainer assembly shall be located at the approximate $\frac{1}{2}$ of each temporary concrete barrier.
 The retainer plate shall not be removed until the concrete on the adjacent stage is ready to be poured. For Detail III applications the retainer plate shall not be removed until just prior to placing the adjacent beam.
 When the 'A' dimension is less than 1 1/2', the wood block shall be omitted and the barrier shall be placed in direct contact with the steel retainer plate. For deck beam applications the minimum required 'A' distance is 6" to accommodate the shear key clamping device.

Detail I - Installation for a new bridge deck or bridge slab.
 Detail II - Installation for a new deck beam with an initial concrete wearing surface. Additional bar splicers shall be provided at 6'-0" centers and paired with the bar splicers of the concrete wearing surface reinforcement to accommodate the installation of the retainer assemblies. The cost of the additional bar splicers is included with the concrete wearing surface.
 Detail III - Installation for a new deck beam with no initial wearing surface or with an initial hot-mix asphalt (HMA) wearing surface present. The deck beam directly beneath the temporary concrete barrier shall be fabricated with bar splicer inserts in the side of the beam, as detailed, to accommodate the installation of the retainer assemblies. A pair of bar splicers, 6" apart, shall be placed at 6'-0" centers along the length of the beam. The cost of the bar splicers is included with the deck beam.

RAILING CRITERIA

NCHRP 350 Test Level	3
Railing Weight (plf)	440

R-27 10-12-2021

DESIGNED - CCC	PASSED
CHECKED - JSB	
DRAWN - STEFFEN	
CHECKED - CCC JSB	

PASSED

Jaime F. [Signature]
ENGINEER OF BRIDGES AND STRUCTURES

DATE - SEPTEMBER 19, 2022

REVISED -
REVISED -

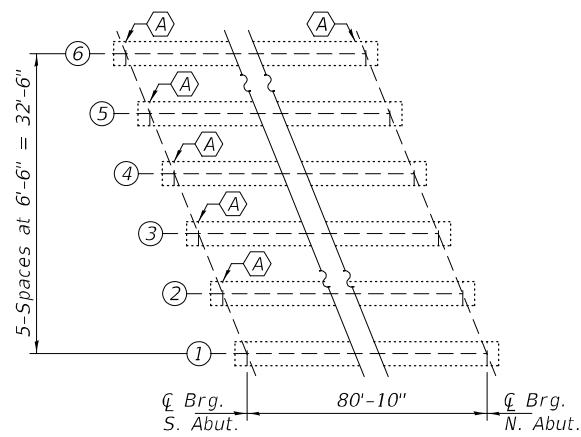
STATE OF ILLINOIS
DEPARTMENT OF TRANSPORTATION

TEMPORARY CONCRETE BARRIER
SN 071-0072

SHEET NO. 5 OF 6 SHEETS

F.A. RTE.	SECTION	COUNTY	TOTAL SHEETS	SHEET NO.
742	(39BR)BDR	OGLE	16	15
CONTRACT NO. 64R12				

ILLINOIS FED. AID PROJECT

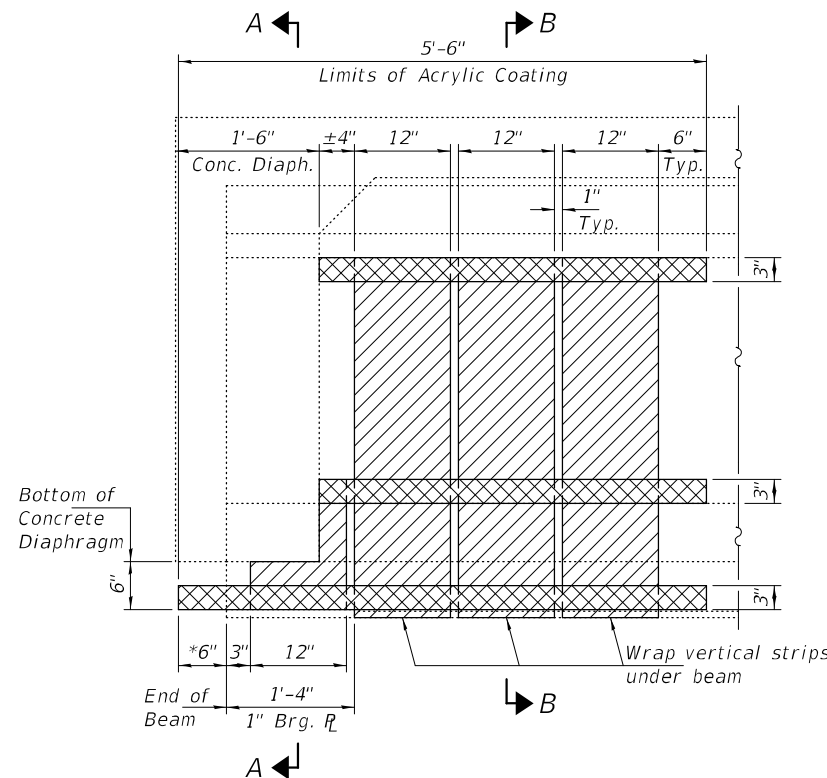


PARTIAL FRAMING PLAN

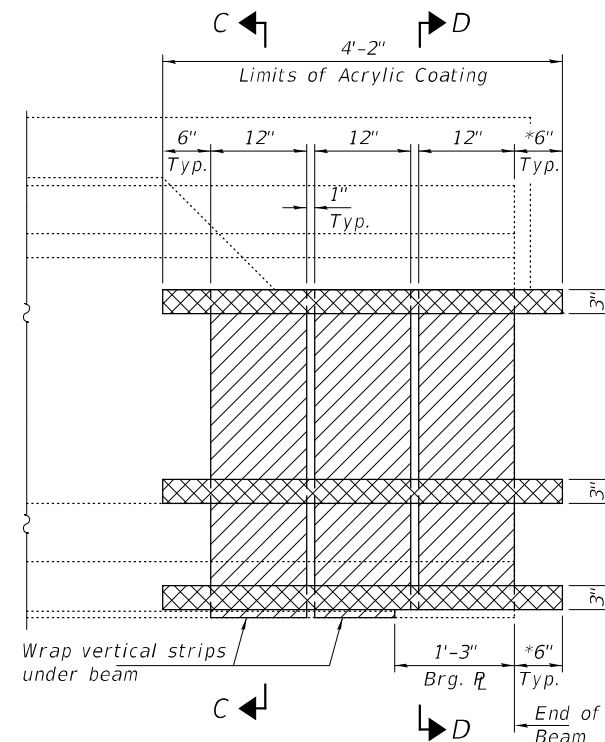
(A) - F.R.P. Strengthening

P.P.C. I-BEAM REPAIR ESTIMATED QUANTITIES

SOUTH ABUT.		NORTH ABUT.	
Beam	Sq. Ft.	Beam	Sq. Ft.
6	4.0	6	2.0
5	3.0	5	-
4	3.0	4	-
3	2.0	3	-
2	2.0	2	-
1	-	1	-



REPAIR "A" - BEAMS 2 THRU 6 AT S. ABUT.

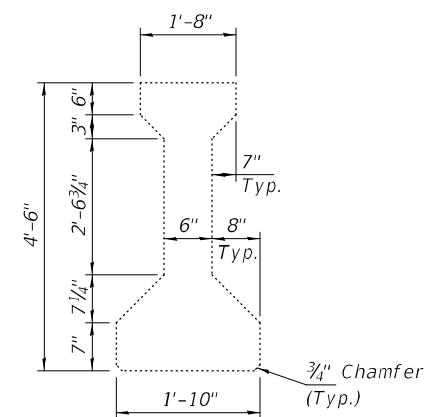
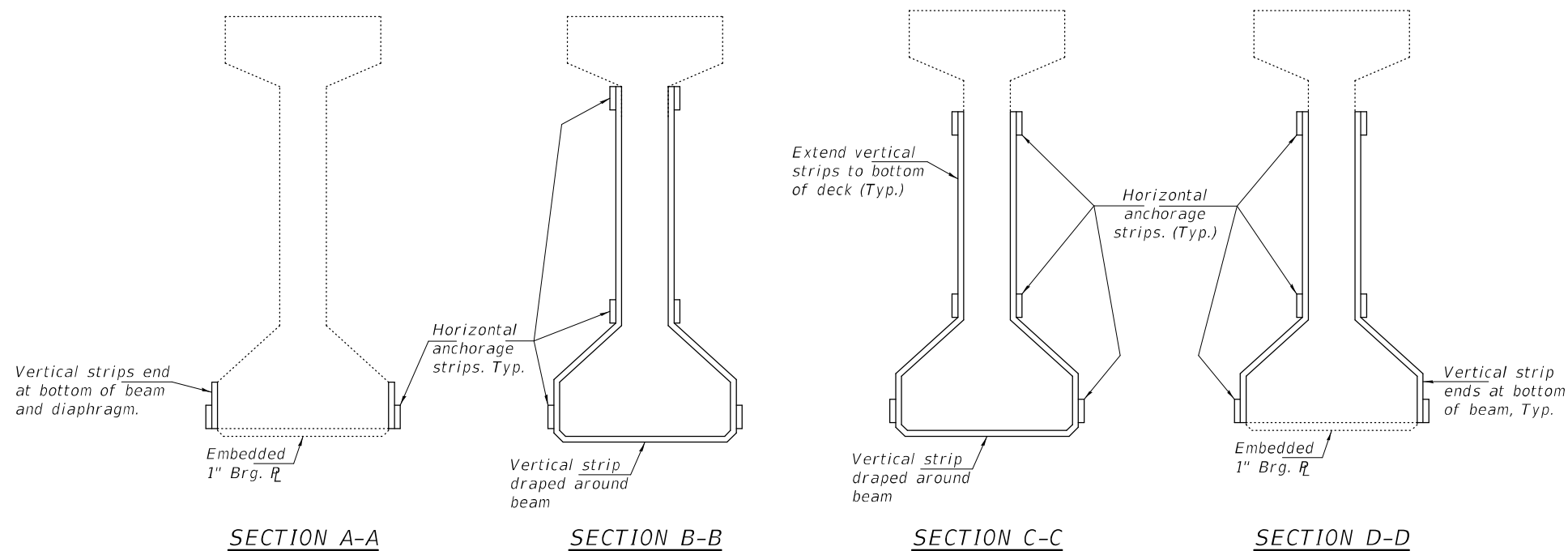


REPAIR "A" - BEAM 6 AT N. ABUT.

* Wrap horizontal anchorage strips around end of beam.

Note:

The existing concrete surface shall be cleaned and prepared in accordance with the Special Provisions. Acrylic Coating shall be placed over the fiber wrap repairs. Two coats shall be applied. See Special Provisions for "FRP Strengthening." Vertical FRP panels may be trimmed to fit around diaphragms. The minimum width of the trimmed legs must be 3". The FRP panel may terminate at the base of the diaphragm if the minimum width cannot be met. The horizontal anchorage strips must wrap 6" onto the diaphragm face if the strip is broken due to the diaphragm location.



BEAM DIMENSIONS

DESIGNED - CCC
 CHECKED - JSB
 DRAWN - STEFFEN
 CHECKED - CCC JSB

PASSED

Jaime F. Steffen
 ENGINEER OF BRIDGES AND STRUCTURES

DATE - SEPTEMBER 19, 2022

REVISED -
 REVISED -

**STATE OF ILLINOIS
 DEPARTMENT OF TRANSPORTATION**

**PPC I-BEAM REPAIR
 SN 071-0072**

SHEET NO. 6 OF 6 SHEETS

F.A. RTE.	SECTION	COUNTY	TOTAL SHEETS	SHEET NO.
742	(398R)BDR	OGLE	16	16
CONTRACT NO. 64R12				
ILLINOIS FED. AID PROJECT				