

STATE OF ILLINOIS  
DEPARTMENT OF TRANSPORTATION

F.A.P. RTE.	SECTION	COUNTY	TOTAL SHEETS	SHEET NO.
332	(C-1, 3, 3R) SFY	IROQUOIS	9	1
		ILLINOIS	CONTRACT NO. 66M38	

**INDEX OF SHEETS**

- 1 COVER SHEET
- 2 GENERAL NOTES
- 3-4 SUMMARY OF QUANTITIES
- 5 TYPICAL SECTIONS
- 6-7 SCHEDULES
- 8-9 DETAILS

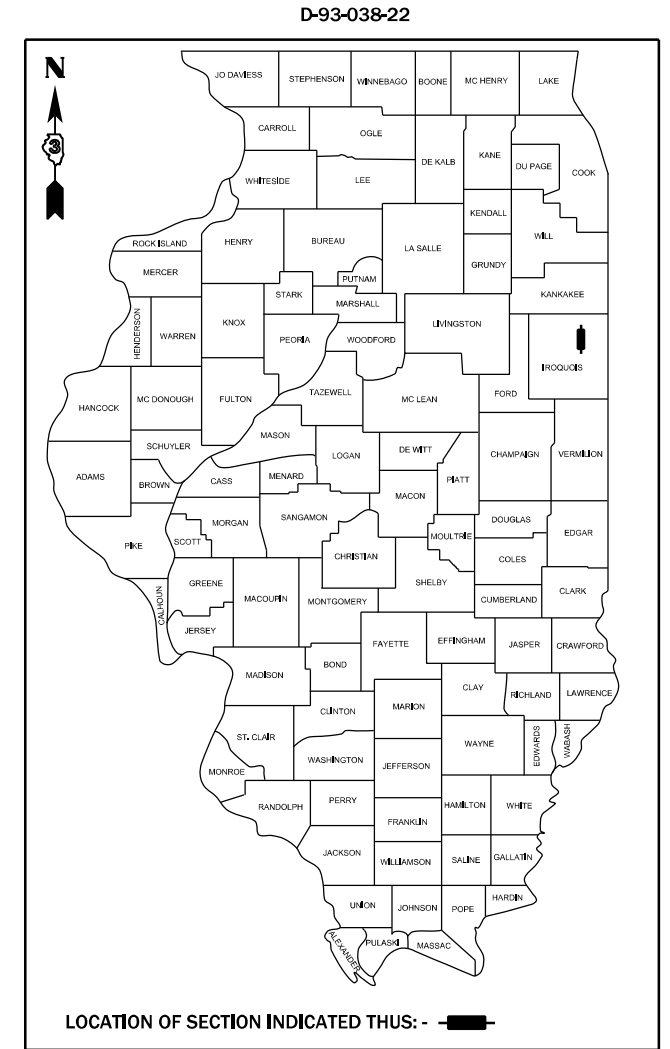
**HIGHWAY STANDARDS**

- 000001-08 STANDARD SYMBOLS, ABBREVIATIONS AND PATTERNS
- 001006 DECIMAL OF AN INCH AND OF A FOOT
- 406201-01 MAILBOX TURNOUT
- 482001-02 HMA SHOULDER ADJACENT TO FLEXIBLE PAVEMENT
- 482006-03 HMA SHOULDER ADJACENT TO RIGID PAVEMENT
- 642006-01 SHOULDER RUMBLE STRIPS, 8 INCH
- 701006-05 OFF-ROAD OPERATIONS 2L, 2W, 15' TO 24" FROM PAVEMENT EDGE
- 701311-03 LANE CLOSURE, 2L, 2W, MOVING OPERATIONS - DAY ONLY
- 701326-04 LANE CLOSURE, 2L, 2W, PAVEMENT WIDENING, FOR SPEEDS ≥ 45 MPH
- 701901-08 TRAFFIC CONTROL DEVICES

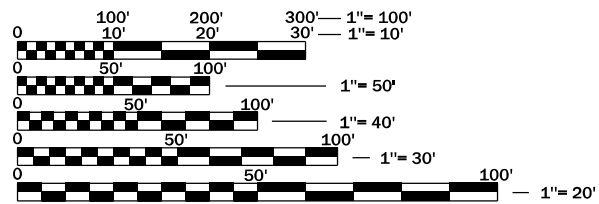
**PROPOSED  
HIGHWAY PLANS**

**FAP ROUTE 332 (IL 1)  
SECTION (C-1, 3, 3R) SFY  
PROJECT: HSIP - T2YY (184)  
SHOULDER WIDENING AND RUMBLE STRIPS  
IROQUOIS COUNTY**

C-93-061-22



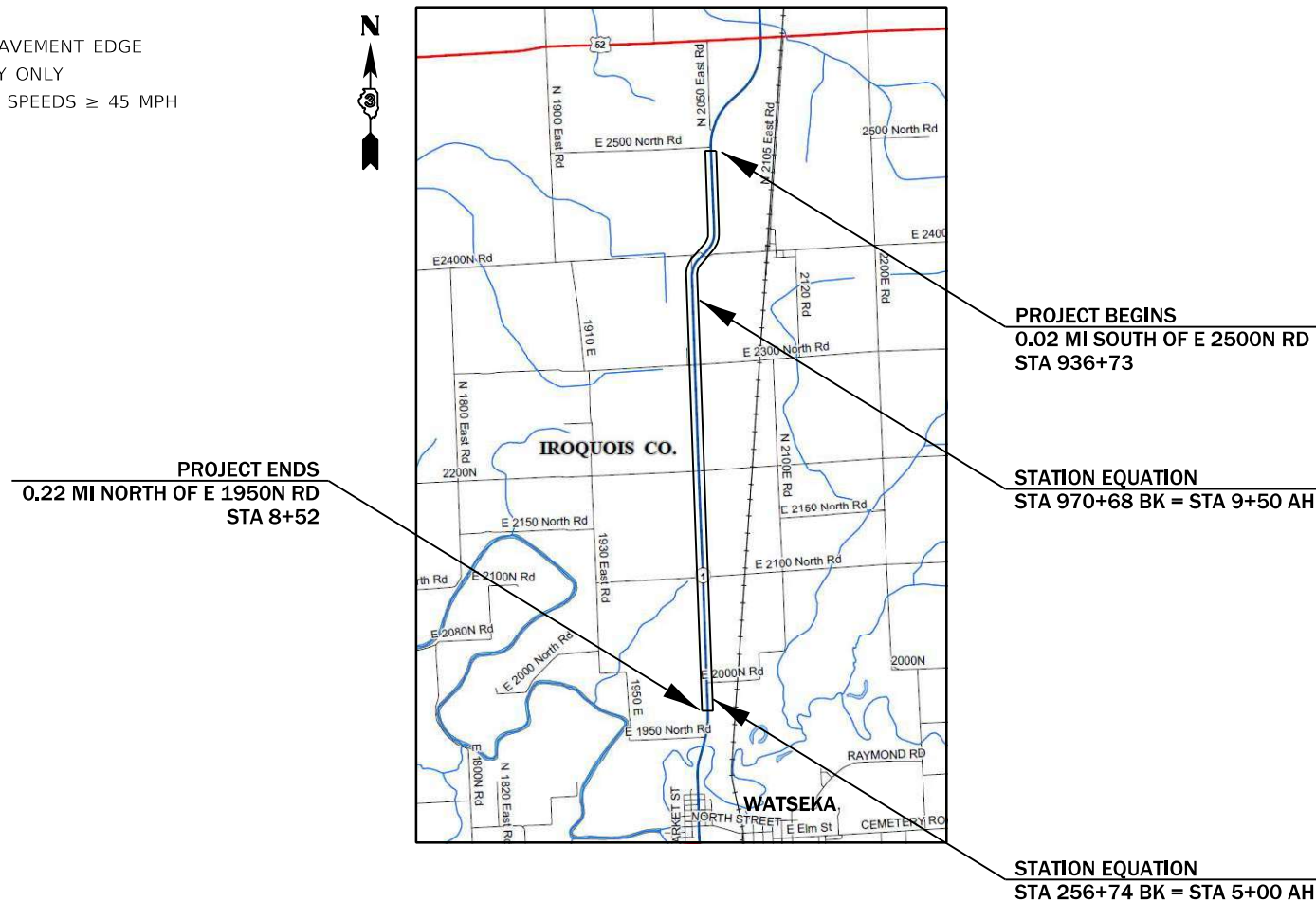
**IL 1 - OTHER ARTERIAL**  
2019 ADT = 2500  
P.V. = 88.4% S.U. = 4.8% M.U. = 6.8%



FULL SIZE PLANS HAVE BEEN PREPARED USING STANDARD ENGINEERING SCALES. REDUCED SIZED PLANS WILL NOT CONFORM TO STANDARD SCALES. IN MAKING MEASUREMENTS ON REDUCED PLANS, THE ABOVE SCALES MAY BE USED.

J.U.L.I.E.  
JOINT UTILITY LOCATION INFORMATION FOR EXCAVATION  
1-800-892-0123  
OR 811

**PROJECT ENGINEER: JOE KANNEL, P.E.**  
**UNIT CHIEF: MARC BUDZYNSKI, P.E.**  
DISTRICT 3 NO. (815) 434-6131  
CONTRACT NO. 66M38



**PROJECT BEGINS**  
0.02 MI SOUTH OF E 2500N RD  
STA 936+73

**STATION EQUATION**  
STA 970+68 BK = STA 9+50 AH

**STATION EQUATION**  
STA 256+74 BK = STA 5+00 AH

**PROJECT ENDS**  
0.22 MI NORTH OF E 1950N RD  
STA 8+52

GROSS & NET LENGTH = 28,138 FT. = 5.33 MILES

STATE OF ILLINOIS  
DEPARTMENT OF TRANSPORTATION

SUBMITTED August 26, 2022  
*Marc Budzynski*  
REGIONAL ENGINEER

October 14, 2022  
*Scott A. Etkin*  
ENGINEER OF DESIGN AND ENVIRONMENT

October 14, 2022  
*Stephen M. Smith*  
DIRECTOR OF HIGHWAYS PROJECT IMPLEMENTATION

**PRINTED BY THE AUTHORITY  
OF THE STATE OF ILLINOIS**

**GENERAL NOTES**

THE HMA SURFACE OF ALL MAILBOX TURNOUTS, PRIVATE ENTRANCES, COMMERCIAL ENTRANCES, AND SIDE ROADS SHALL BE MADE NEATLY, IN A WORKMANLIKE MANNER, AND SHALL ACCURATELY CONFORM TO THE SHAPES AND DIMENSIONS SHOWN ON THE PLAN DETAILS. IF REQUIRED BY THE ENGINEER, THE CONTRACTOR SHALL SAW CUT THE HMA SURFACE TO CONFORM TO THE SHAPES AND DIMENSIONS SHOWN ON THE PLAN DETAILS. THIS WORK WILL BE INCLUDED IN THE COST OF THE HMA SURFACE.

THE FOLLOWING RATES OF APPLICATION HAVE BEEN USED IN CALCULATING PLAN QUANTITIES:

HMA RESURFACING	112	LBS / SQ YD / IN
-----------------	-----	------------------

ALL DAMAGE TO DEPARTMENT OWNED UNDERGROUND FACILITIES, CAUSED BY THE CONTRACTOR SHALL BE REPAIRED TO THE SATISFACTION OF THE DEPARTMENT AT THE CONTRACTOR'S EXPENSE. THIS SHALL INCLUDE ALL TEMPORARY REPAIRS REQUIRED TO KEEP THE FACILITY OPERATIONAL WHILE MATERIAL IS BEING OBTAINED TO MAKE PERMANENT REPAIRS. SPLICING OF ELECTRIC CABLE WILL NOT BE ALLOWED. ELECTRIC CABLE SHALL BE REPLACED FROM POLE TO POLE OR CONTROLLER.

THE CONTRACTOR SHALL CONTACT JULIE AT LEAST 48 HOURS PRIOR TO EXCAVATION TO DETERMINE WHICH UTILITIES ARE IN THE AREA.

**COMMITMENTS:**

HMA MIXTURE REQUIREMENT TABLE		
LOCATION(S) :	ENTIRE PROJECT	ENTIRE PROJECT
MIXTURE USE(S) :	SHOULDER BOTTOM LIFT(S)	SHOULDER TOP LIFT (2")
BINDER GRADE (PG) :	PG 64-22	PG 64-22
DESIGN AIR VOIDS :	4.0% @ N50	4.0% @ N50
MIXTURE COMPOSITION: (MIXTURE GRADATION)	1L-19.0	1L-9.5 FG
FRICTION AGGREGATE :	-	-
MIXTURE WEIGHT :	112.0 LB/SY/IN	112.0 LB/SY/IN
QUALITY MANAGEMENT PROGRAM:	QC/QA	QC/QA
SUBLOT SIZE :	N/A	N/A
DENSITY TEST METHOD:	CORES	CORES
MATERIAL TRANSFER DEVICE (REQUIRED?) :	NO	NO

STATE OF ILLINOIS  
DEPARTMENT OF TRANSPORTATION  
DISTRICT THREE  
AS BUILT INFORMATION

STATE OF ILLINOIS  
DEPARTMENT OF TRANSPORTATION  
DISTRICT THREE

\_\_\_\_\_  
SUPERVISING CONSTRUCTION FIELD ENGINEER

PREPARED BY: \_\_\_\_\_  
DISTRICT STUDIES & PLANS ENGINEER

\_\_\_\_\_  
RESIDENT ENGINEER / TECHNICIAN

DATE: \_\_\_\_\_

START & END DATES  
OF CONSTRUCTION:

EXAMINED BY: \_\_\_\_\_  
DISTRICT CONSTRUCTION ENGINEER

INSPECTORS: \_\_\_\_\_

\_\_\_\_\_  
DISTRICT MATERIALS ENGINEER

\_\_\_\_\_  
DISTRICT OPERATIONS ENGINEER

MODEL: Default  
 FILE: \\nas01-01\pub\laser-cw\benitez.com\PHWDOT\Documents\DOT Offices\District 3\Projects\0366M38\CADD\0366M38-plt-cover.dgn

USER NAME = marc.budzynski	DESIGNED -	REVISED -
PLOT SCALE = 100.0000' / in.	DRAWN -	REVISED -
PLOT DATE = 8/26/2022	CHECKED -	REVISED -
	DATE -	REVISED -

**STATE OF ILLINOIS  
DEPARTMENT OF TRANSPORTATION**

**GENERAL NOTES**

SCALE: SHEET OF SHEETS STA. TO STA.

F.A.P. RTE.	SECTION	COUNTY	TOTAL SHEETS	SHEET NO.
332	(C-1, 3, 3R) SFY	IROQUOIS	9	2
CONTRACT NO. 66M38			ILLINOIS FED. AID PROJECT	

MODEL: Default  
 FILE: \\marc-budzyński-pc\Users\benley.com\PHWDOT\Documents\DOT Offices\Bentley - Projects\0366M38\CAD\0366M38.dwg-cover.dgn

CONSTR. CODE
90% FED 10% STATE

CODE NO.	ITEM	UNIT	TOTAL QUANTITY	SAFETY	
				0021	RURAL
40600290	BITUMINOUS MATERIALS (TACK COAT)	POUND	11152		11152
40800050	INCIDENTAL HOT-MIX ASPHALT SURFACING	TON	50.4		50.4
44000157	HOT-MIX ASPHALT SURFACE REMOVAL, 2"	SQ YD	442.1		442.1
48203029	HOT-MIX ASPHALT SHOULDERS, 8"	SQ YD	24298		24298
64200108	SHOULDER RUMBLE STRIPS, 8 INCH	FOOT	43539		43539
* 66900200	NON-SPECIAL WASTE DISPOSAL	CU YD	136		136
* 66900530	SOIL DISPOSAL ANALYSIS	EACH	3		3
* 66901001	REGULATED SUBSTANCES PRE-CONSTRUCTION PLAN	L SUM	1		1
* 66901003	REGULATED SUBSTANCES FINAL CONSTRUCTION REPORT	L SUM	1		1
* 66901006	REGULATED SUBSTANCES MONITORING	CAL DA	3		3
67100100	MOBILIZATION	L SUM	1		1
70100500	TRAFFIC CONTROL AND PROTECTION, STANDARD 701326	L SUM	1		1
70103815	TRAFFIC CONTROL SURVEILLANCE	CAL DA	10		10
* 78009004	MODIFIED URETHANE PAVEMENT MARKING - LINE 4"	FOOT	112552		112552

\*= SPECIALTY ITEM

USER NAME = marc.budzyński	DESIGNED -	REVISED -
DRAWN -	REVISOR -	
PLOT SCALE = 100.0000 ' / in.	CHECKED -	REVISED -
PLOT DATE = 8/26/2022	DATE -	REVISED -

**STATE OF ILLINOIS  
DEPARTMENT OF TRANSPORTATION**

**SUMMARY OF QUANTITIES**

SCALE: SHEET OF SHEETS STA. TO STA.

F.A.P. RTE.	SECTION	COUNTY	TOTAL SHEETS	SHEET NO.
332	(C-1, 3, 3R) SFY	IROQUOIS	9	3
			CONTRACT NO. 66M38	
ILLINOIS FED. AID PROJECT				

CODE NO.	ITEM	UNIT	TOTAL QUANTITY	CONSTR. CODE	
				90% FED 10% STATE	SAFETY
				0021	RURAL
X0800001	SHOULDER REMOVAL (SPECIAL)	SQ YD	24298	24298	
Z0030850	TEMPORARY INFORMATION SIGNING	SQ FT	42	42	

MODEL: Default  
 FILE: \\marc-budzyński\p\11482-cw\benlley.com\PHWDOT\Documents\DOT Offices\Burlington\Projects\0366M38\CAD\0366M38.dwg-cover.dgn

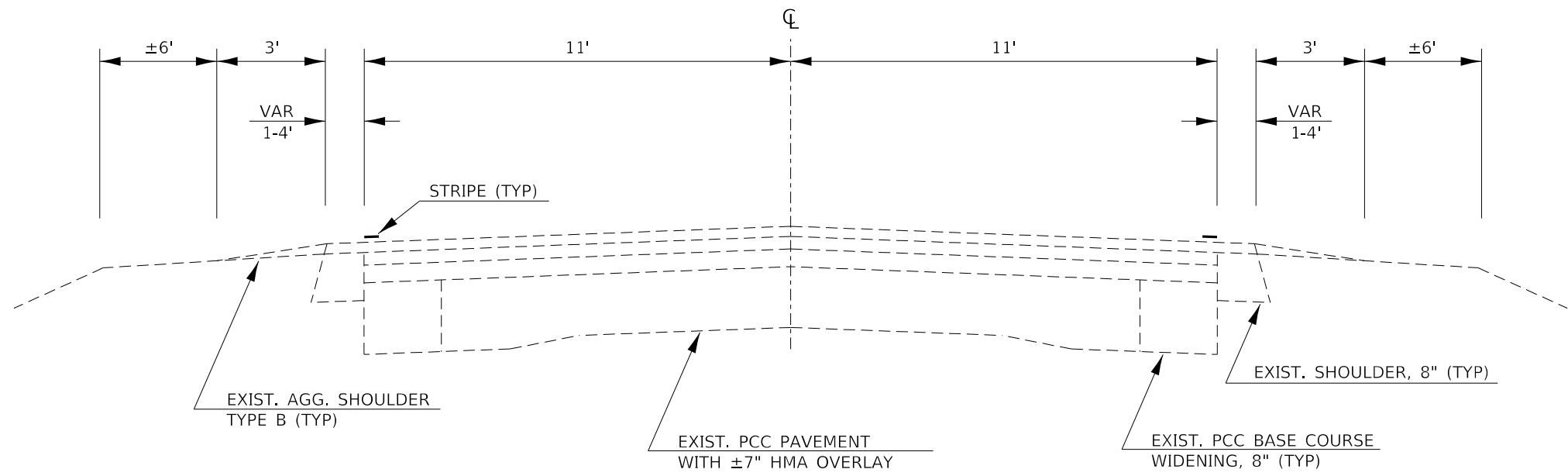
USER NAME = marc.budzyński	DESIGNED -	REVISED -
	DRAWN -	REVISED -
PLOT SCALE = 100.0000 ' / in.	CHECKED -	REVISED -
PLOT DATE = 8/26/2022	DATE -	REVISED -

**STATE OF ILLINOIS  
DEPARTMENT OF TRANSPORTATION**

**SUMMARY OF QUANTITIES**

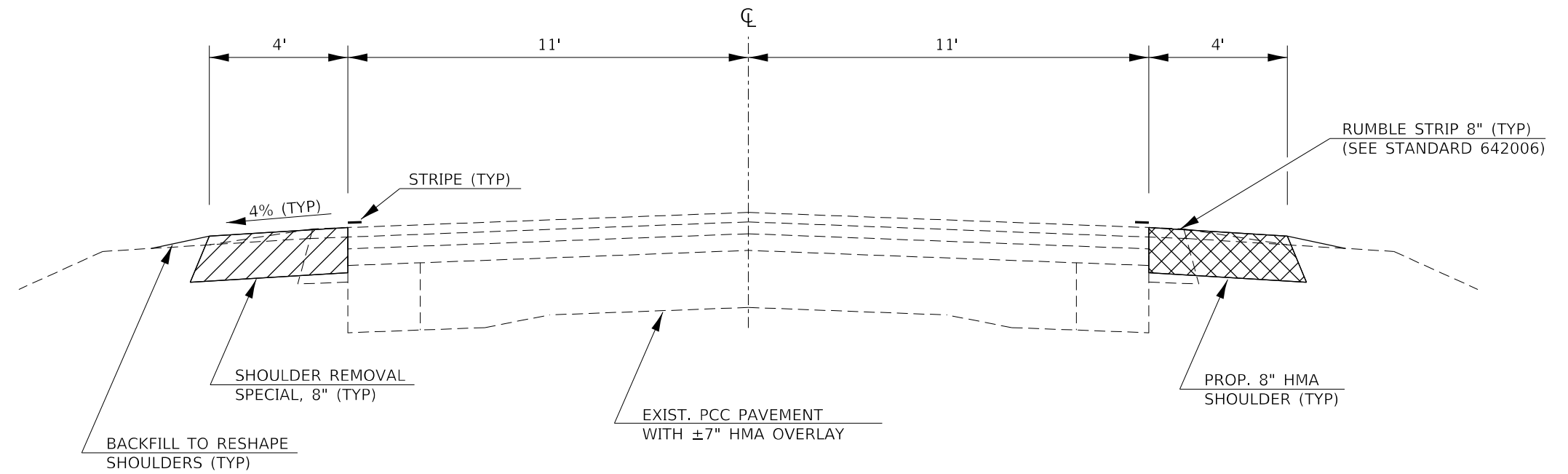
SCALE: SHEET OF SHEETS STA. TO STA.

F.A.P. RTE.	SECTION	COUNTY	TOTAL SHEETS	SHEET NO.
332	(C-1, 3, 3R) SFY	IROQUOIS	9	4
CONTRACT NO. 66M38				
ILLINOIS FED. AID PROJECT				



**EXISTING TYPICAL SECTION**

STA 936+73 TO STA 970+68  
 STA 970+68 BK = STA 9+50 AH  
 STA 9+50 TO STA 256+74  
 STA 256+74 BK = STA 5+00 AH  
 STA 5+00 TO STA 8+52



**PROPOSED TYPICAL SECTION**

STA 936+73 TO STA 970+68  
 STA 970+68 BK = STA 9+50 AH  
 STA 9+50 TO STA 256+74  
 STA 256+74 BK = STA 5+00 AH  
 STA 5+00 TO STA 8+52

MODEL: Default  
 FILE: \\mdepc-prod\server\benfley.com\PHWDOT\Documents\DOT Offices\Bentley - Projects\0366M38\CADD\0366M38-dtl-cover.dgn

USER NAME = marc.budzynski	DESIGNED -	REVISED -
	DRAWN -	REVISED -
PLOT SCALE = 100.0000' / in.	CHECKED -	REVISED -
PLOT DATE = 8/26/2022	DATE -	REVISED -

**STATE OF ILLINOIS  
 DEPARTMENT OF TRANSPORTATION**

TYPICAL SECTIONS	
SCALE:	SHEET OF SHEETS STA. TO STA.

F.A.P. RTE.	SECTION	COUNTY	TOTAL SHEETS	SHEET NO.
332	(C-1, 3, 3R) SFY	IROQUOIS	9	5
CONTRACT NO. 66M38				
ILLINOIS FED. AID PROJECT				

SHOULDER REMOVAL & REPLACEMENT SCHEDULE									
LOCATION			SIDE	LENGTH	SHOULDER REMOVAL (SPECIAL)	HMA SHOULDERS 8"	BIT MTLs TACK COAT	SHOULDER RUMBLE STRIPS, 8"	*MOD URETH PVMt MARKING WHITE 4"
STA	TO	STA	LT / RT	FOOT	SQ YD	SQ YD	POUND	FOOT	FOOT
E 2500N RD = STA 935+66									
936+73	TO	970+68	LT & RT	3395	3018	3018	1358	6790	13580
STATION EQUATION									
STA 970+68 BK = STA 9+50 AH									
9+50	TO	29+19	LT & RT	1969	1751	1751	788	3938	7876
E 2400N RD = STA 29+69									
30+19	TO	30+69	LT & RT	50	45	45	20	-	200
30+69	TO	32+12	LT	143	64	64	29	-	572
32+12	TO	67+27	LT & RT	3515	3125	3125	1406	7030	14060
67+27	TO	78+19	LT & RT	1092	971	971	437	-	4368
78+19	TO	80+07	LT	188	84	84	38	-	752
80+07	TO	80+95	LT & RT	88	79	79	36	-	352
80+95	TO	82+93	LT	198	88	88	40	-	792
82+93	TO	84+12	LT & RT	119	106	106	48	-	476
84+12	TO	85+87	LT	175	78	78	35	-	700
E 2300N RD = STA 86+27									
86+71	TO	93+17	LT & RT	646	575	575	259	-	2584
93+17	TO	112+81	LT & RT	1964	1746	1746	786	3928	7856
112+81	TO	115+02	LT & RT	221	197	197	89	-	884
115+02	TO	119+94	RT	492	219	219	99	-	1968
119+94	TO	122+36	LT & RT	242	216	216	97	-	968
122+36	TO	128+41	LT & RT	605	538	538	242	1210	2420
128+41	TO	132+91	LT & RT	450	400	400	180	-	1800
132+91	TO	138+86	LT & RT	595	529	529	238	1190	2380
E 2200N RD = STA 139+21									
139+56	TO	150+39	LT & RT	1083	963	963	434	-	4332
150+39	TO	153+53	RT	314	140	140	63	-	1256
153+53	TO	161+68	LT & RT	815	725	725	326	-	3260
161+68	TO	191+86	LT & RT	3000	2667	2667	1200	6000	12000
191+86	TO	192+01	RT	15	7	7	3	30	60
E 2100N RD = STA 192+25									
192+62	TO	244+88	LT & RT	5226	4646	4646	2091	10452	20904
244+88	TO	245+35	RT	47	21	21	10	47	188
E 2000N RD = STA 245+35									
245+35	TO	245+93	RT	58	26	26	12	58	232
245+93	TO	256+74	LT & RT	1081	961	961	433	2162	4324
STATION EQUATION									
STA 256+74 BK = STA 5+00 AH									
5+00	TO	8+52	LT & RT	352	313	313	141	704	1408
E 1950N RD = STA 20+42									
<b>TOTAL</b>				<b>28138</b>	<b>24298</b>	<b>24298</b>	<b>10938</b>	<b>43539</b>	<b>112552</b>

\*QUANTITY REPRESENTS TWO SEPARATE APPLICATIONS

MOEFL - Defaul  
FILE NAME: p:\bids\csw\benfley.com\PHWD07\Documents\DOT Offices\Bentley - Projects\0366M38\CADD\0366M38-ah-cvwr.dgn

USER NAME = marc.budzynski	DESIGNED -	REVISED -	<b>STATE OF ILLINOIS DEPARTMENT OF TRANSPORTATION</b>	<b>SCHEDULES</b>				F.A.P. RTE.	SECTION	COUNTY	TOTAL SHEETS	SHEET NO.	
DRAWN -	REVISED -	REVISED -		SCALE:	SHEET	OF	SHEETS	STA.	TO STA.	ILLINOIS	FED. AID PROJECT		
PLOT SCALE = 100,0000' / in.	CHECKED -	REVISED -								(C-1, 3, 3R) SFY	IROQUOIS	9	6
PLOT DATE = 8/26/2022	DATE -	REVISED -										CONTRACT NO. 66M38	

MAILBOX TURNOUT SCHEDULE				
STA / SIDE		HMA SURF REMOVAL 2"	INCIDENTAL HMA SURF 2"	BIT MTLs TACK COAT
		SQ YD	TON	POUND
949+90	RT	13.8	1.6	7
STA EQN*				
30+69 TO 32+12	RT	OMIT	OMIT	OMIT
46+79	RT	26.7	3.0	13
60+77	RT	13.6	1.6	7
67+69	RT	20.2	2.3	10
71+08	RT	OMIT	OMIT	OMIT
73+39	RT	OMIT	OMIT	OMIT
76+89	RT	23.2	2.6	11
78+19 TO 80+07	RT	OMIT	OMIT	OMIT
80+95 TO 82+93	RT	OMIT	OMIT	OMIT
84+12 TO 85+87	RT	OMIT	OMIT	OMIT
92+50	LT	15.8	1.8	8
113+21	LT	34.5	3.9	16
115+02 TO 119+94	LT	OMIT	OMIT	OMIT
121+40	LT	51.2	5.8	24
129+46	LT	26.7	3.0	13
131+30	LT	17.4	2.0	8
145+06	LT	5.6	0.7	3
147+71 TO 148+82	LT	23.7	2.7	11
149+59	LT	9.0	1.1	5
150+39 TO 153+53	LT	OMIT	OMIT	OMIT
154+30	LT	5.0	0.6	3
156+77	LT	9.3	1.1	5
160+85	LT	40.6	4.6	19
165+87	LT	11.6	1.3	6
188+89	LT	11.5	1.3	6
235+89	LT	32.0	3.6	15
237+23	LT	25.6	2.9	12
239+00	LT	10.6	1.2	5
STA EQN**				
7+90	RT	14.5	1.7	7
<b>TOTAL</b>		<b>442.1</b>	<b>50.4</b>	<b>214</b>

THE FIRST 4 FEET OF THE MBTO ADJACENT TO THE TRAVELED WAY IS PAID AS SHOULDER REMOVAL (SPECIAL) AND HMA SHOULDERS 8". THE REMAINING AREA OF THE MBTO IS PAID AS HMA SURFACE REMOVAL 2" AND INCIDENTAL HMA SURFACE 2".

\*STA 970+68 BK = STA 9+50 AH  
\*\*STA 256+74 BK = STA 5+00 AH

SURVEY MONUMENT TABLE						
MONUMENT NUMBER	DESCRIPTION	APPROXIMATE LOCATION	EXISTING MONUMENT TYPE	PROPOSED MONUMENT TYPE	MONUMENT RECORD TO BE RECORDED	RESPONSIBILITY
B001005	SURVEY MONUMENT PER KRAUSE SURVEYING PLAT 050429 LOCATED IN SHOULDER, PREVIOUSLY RESET BY IDOT WITH 24" #5 REBAR UNDER CONTRACT 66K54	1130 FEET+/- NORTH OF 2200 N RD INTERSECTION	PIN	PIN	NO	2
A001005	SURVEY MONUMENT PER KRAUSE SURVEYING PLAT 050429 LOCATED IN SHOULDER, PREVIOUSLY RESET BY IDOT WITH 30" #5 REBAR UNDER CONTRACT 66K54	830 FEET+/- NORTH OF 2200 N RD INTERSECTION	PIN	PIN	NO	2

UNKNOWN MONUMENTS SET BY OTHERS MAY EXIST IN THE SHOULDER. IF FOUND, R.E. WILL DIRECT PLATS AND PLANS TO OBTAIN COORDINATES AND RESET THOSE MONUMENTS IN KIND FOLLOWING CONSTRUCTION. R.E. WILL DIRECT PLATS AND PLANS TO SEARCH FOR ADDITIONAL MONUMENTS IF ADDENDUMS ARE ADDED TO THE JOB LIMITS DURING CONSTRUCTION.

FOLLOWING CONSTRUCTION, R.E. WILL DIRECT PLATS AND PLANS TO SET THE LISTED MONUMENTS.

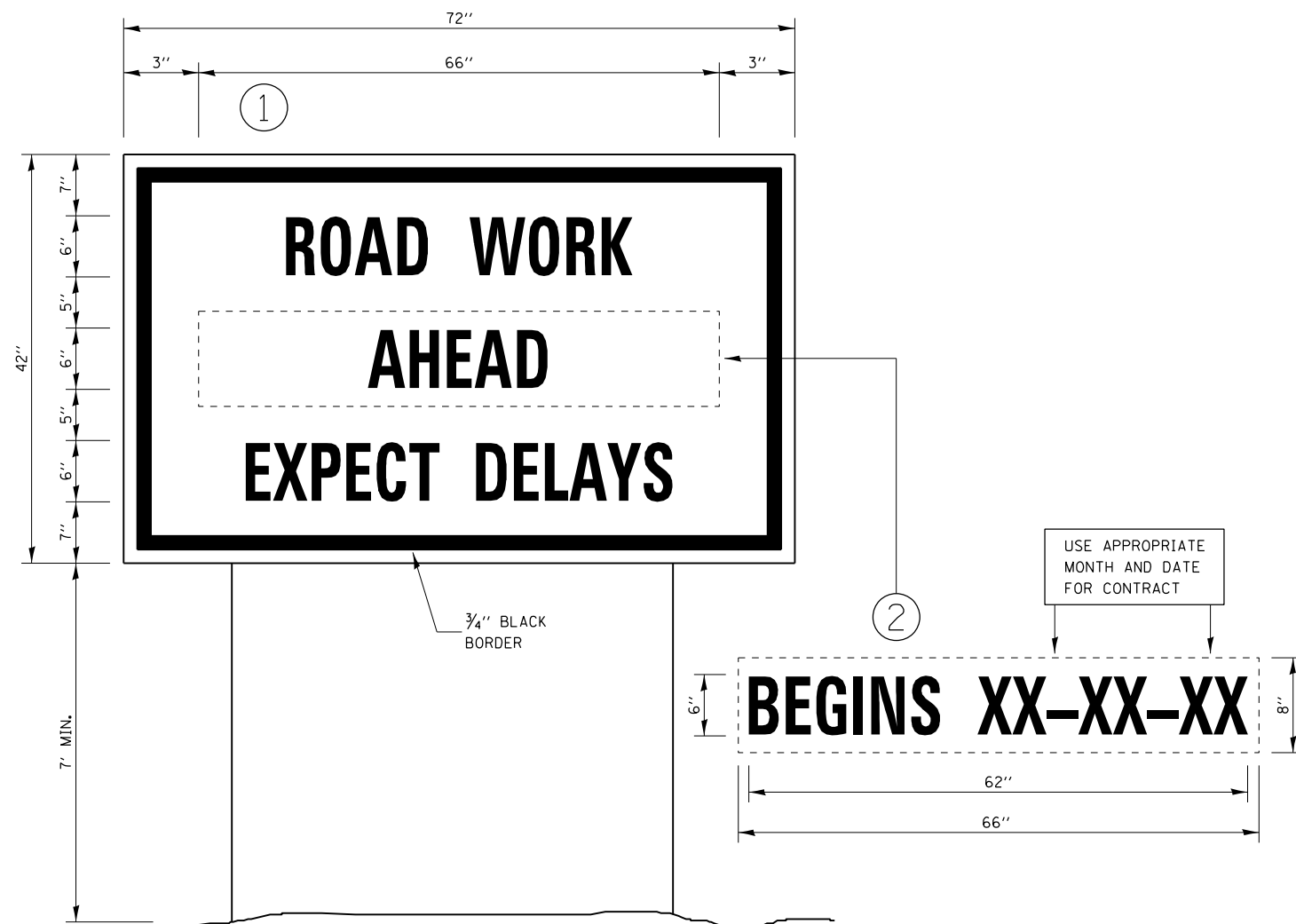
NOTE: FOR BIDDING PURPOSES NO CONTRACTED LAND SURVEYING SERVICES WILL BE REQUIRED FOR SETTING THE LISTED MONUMENTS.

**RESPONSIBILITY:**

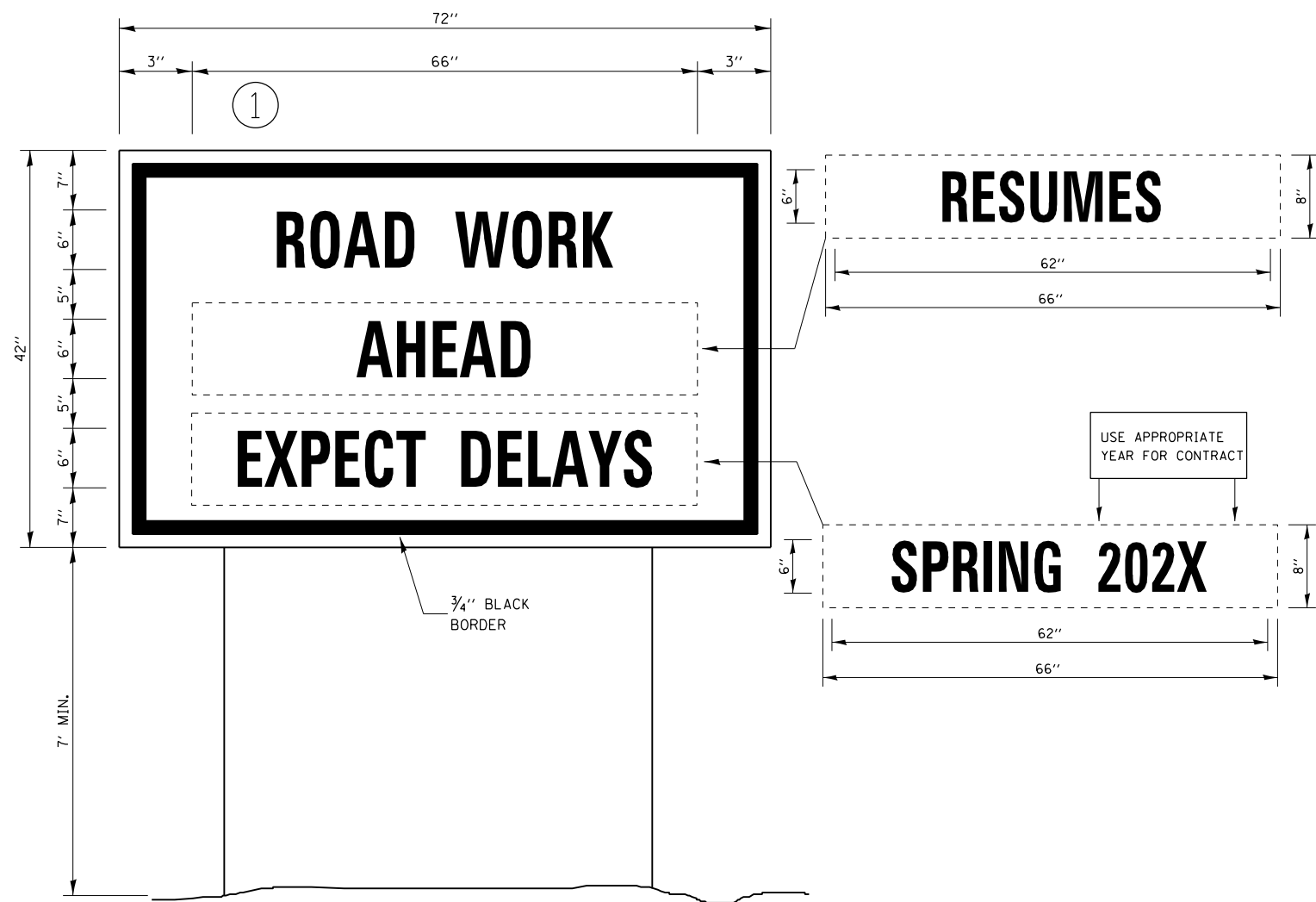
- 1) RESIDENT TO RE-ESTABLISH MONUMENT (PAY ITEM REQUIRED, PERMANENT SURVEY MARKER, TYPE 1)
- 2) PLATS AND PLANS TO RE-ESTABLISH MONUMENT

MODEL: Default  
FILE: M:\MAILS - PROJECTS\66M38\66M38-COVER.dgn  
PROJECTS\DOT\Office\Bentley\3\Projects\66M38\66M38-COVER.dgn

USER NAME = marc.budzynski	DESIGNED -	REVISED -	<b>STATE OF ILLINOIS DEPARTMENT OF TRANSPORTATION</b>	<b>SCHEDULES</b>			F.A.P. RTE.	SECTION	COUNTY	TOTAL SHEETS	SHEET NO.
PLOT SCALE = 100.0000' / in.	DRAWN -	REVISED -					332	(C-1, 3, 3R) SFY	IROQUOIS	9	7
PLOT DATE = 8/26/2022	CHECKED -	REVISED -					CONTRACT NO. 66M38			ILLINOIS	FED. AID PROJECT
	DATE -	REVISED -	SCALE:	SHEET	OF	SHEETS	STA.	TO	STA.		



**TEMPORARY INFORMATION SIGNING**



**WINTER SHUT DOWN SIGNING**

**NOTES:**

1. USE 6" D BLACK LETTERING ON FLOURESENT ORANGE BACKGROUND.
2. ERECT SIGNS AT LOCATIONS IN ADVANCE OF THE "ROAD CONSTRUCTION AHEAD" SIGNS AS DIRECTED BY THE ENGINEER.
3. ERECT SIGN ① WITH INSTALLED PANEL ② A MINIMUM OF ONE WEEK PRIOR TO THE START OF THE LANE CLOSURE.
4. REMOVE PANEL ② ON THAT DATE.
5. SEE SPECIAL PROVISION "TEMPORARY INFORMATION SIGNING" FOR ADDITIONAL INFORMATION.
6. WILL BE PAID FOR PER SQ FT AS "TEMPORARY INFORMATION SIGNING". EACH SIGN = 21 SQ FT AND THE DATE PANEL ② WILL NOT BE MEASURED SEPARATELY FOR PAYMENT.

MODEL: Default  
 FILE: \\mdepc-srv-behrtelny.com\HWIDOT\Documents\DOT Offices\Burlin\3\Projects\0366M38\CADD\0366M38-dtl-cover.dgn

USER NAME = marc.budzynski	DESIGNED -	REVISED -
PLOT SCALE = 100.0000' / in.	DRAWN -	REVISED -
PLOT DATE = 8/26/2022	CHECKED -	REVISED -
	DATE -	REVISED -

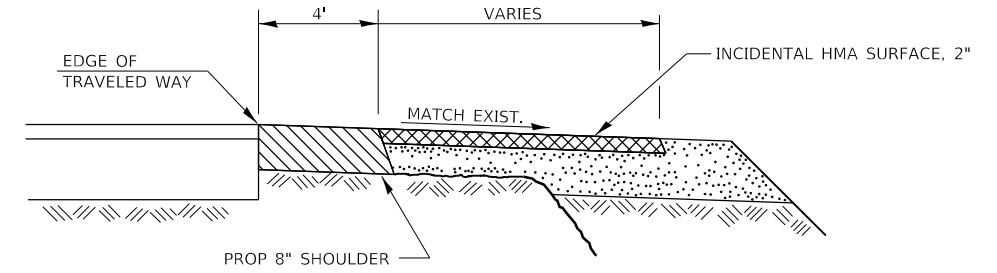
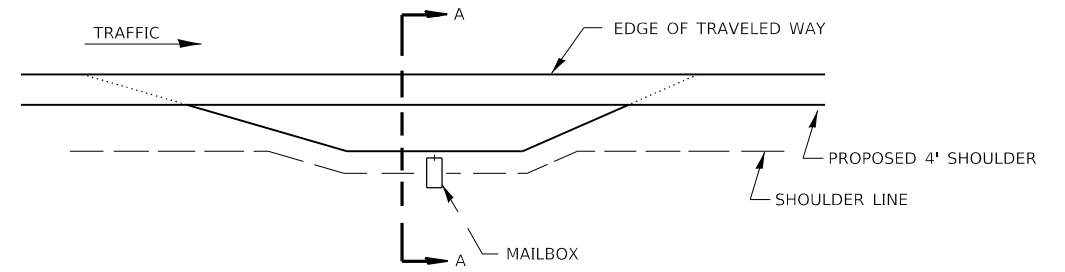
**STATE OF ILLINOIS  
DEPARTMENT OF TRANSPORTATION**

**DETAILS**

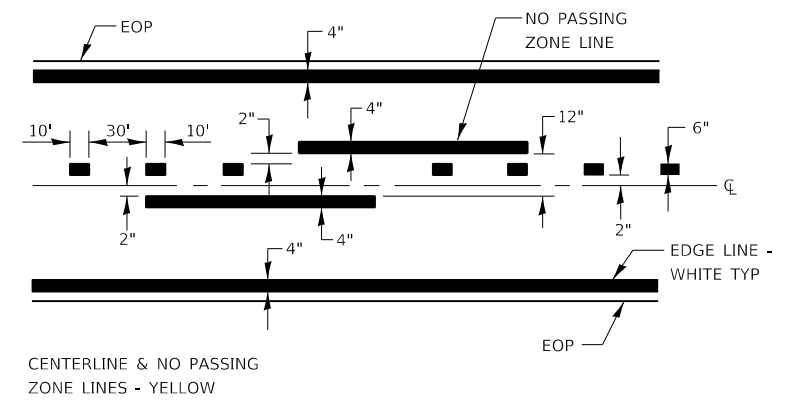
SCALE: SHEET OF SHEETS STA. TO STA.

F.A.P. RTE.	SECTION	COUNTY	TOTAL SHEETS	SHEET NO.
332	(C-1, 3, 3R) SFY	IROQUOIS	9	8
CONTRACT NO. 66M38			ILLINOIS FED. AID PROJECT	





**SECTION A-A**  
**RURAL MAILBOX TURNOUT DETAILS**



**PAVEMENT MARKING**

MODEL: Default  
 FILE: Mailbox - RuralMailbox.dwg  
 PROJECT: I:\Projects\DOT\Office\Drawings\Projects\66M38\Drawings\66M38.dwg

USER NAME = marc.budzynski	DESIGNED -	REVISED -
PLOT SCALE = 100.0000' / in.	DRAWN -	REVISED -
PLOT DATE = 8/26/2022	CHECKED -	REVISED -
	DATE -	REVISED -

**STATE OF ILLINOIS  
DEPARTMENT OF TRANSPORTATION**

<b>DETAILS</b>			
SCALE:	SHEET	OF SHEETS	STA. TO STA.

F.A.P. RTE. 332	SECTION (C-1, 3, 3R) SFY	COUNTY IROQUOIS	TOTAL SHEETS 9	SHEET NO. 9
CONTRACT NO. 66M38				
ILLINOIS FED. AID PROJECT				