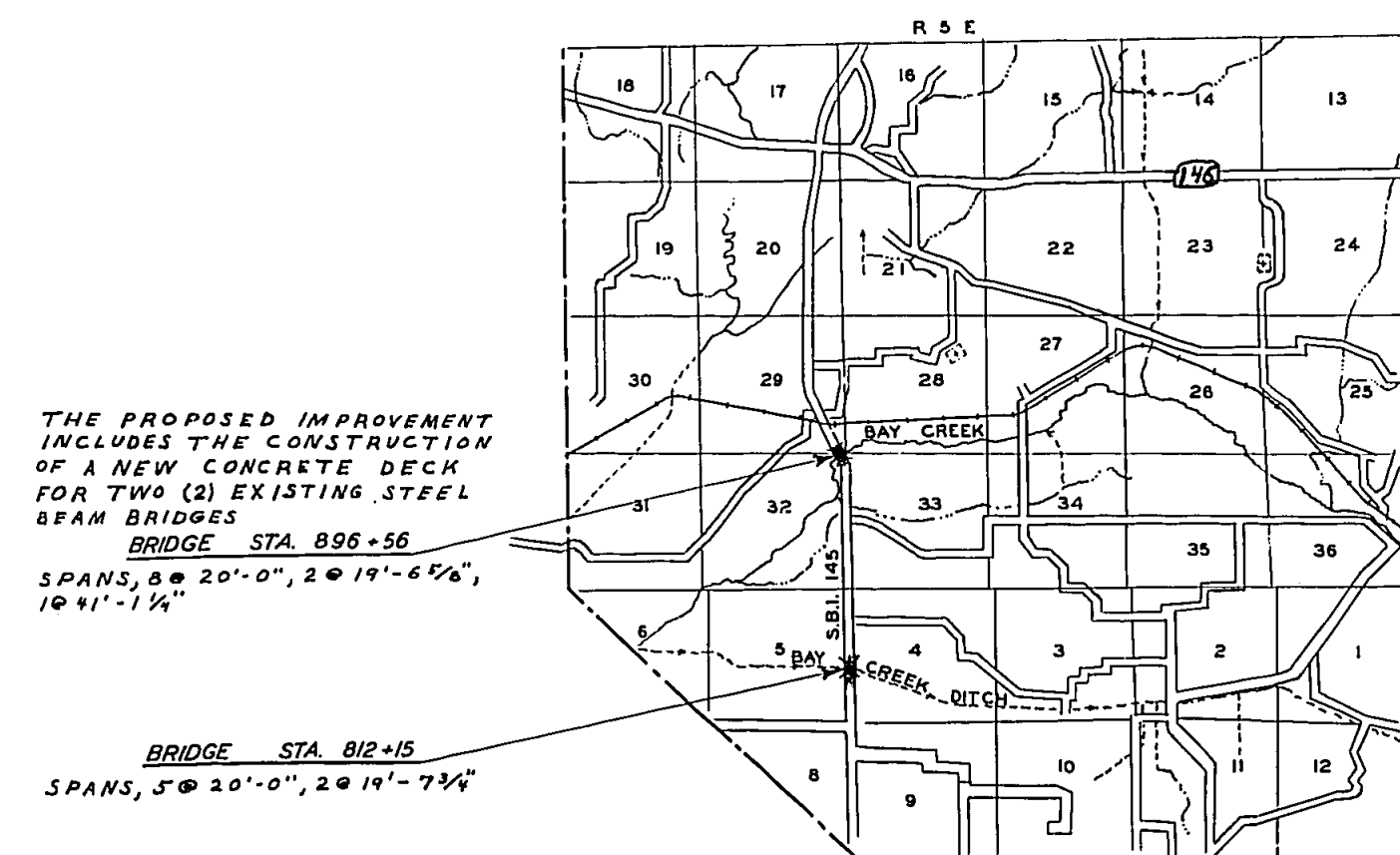
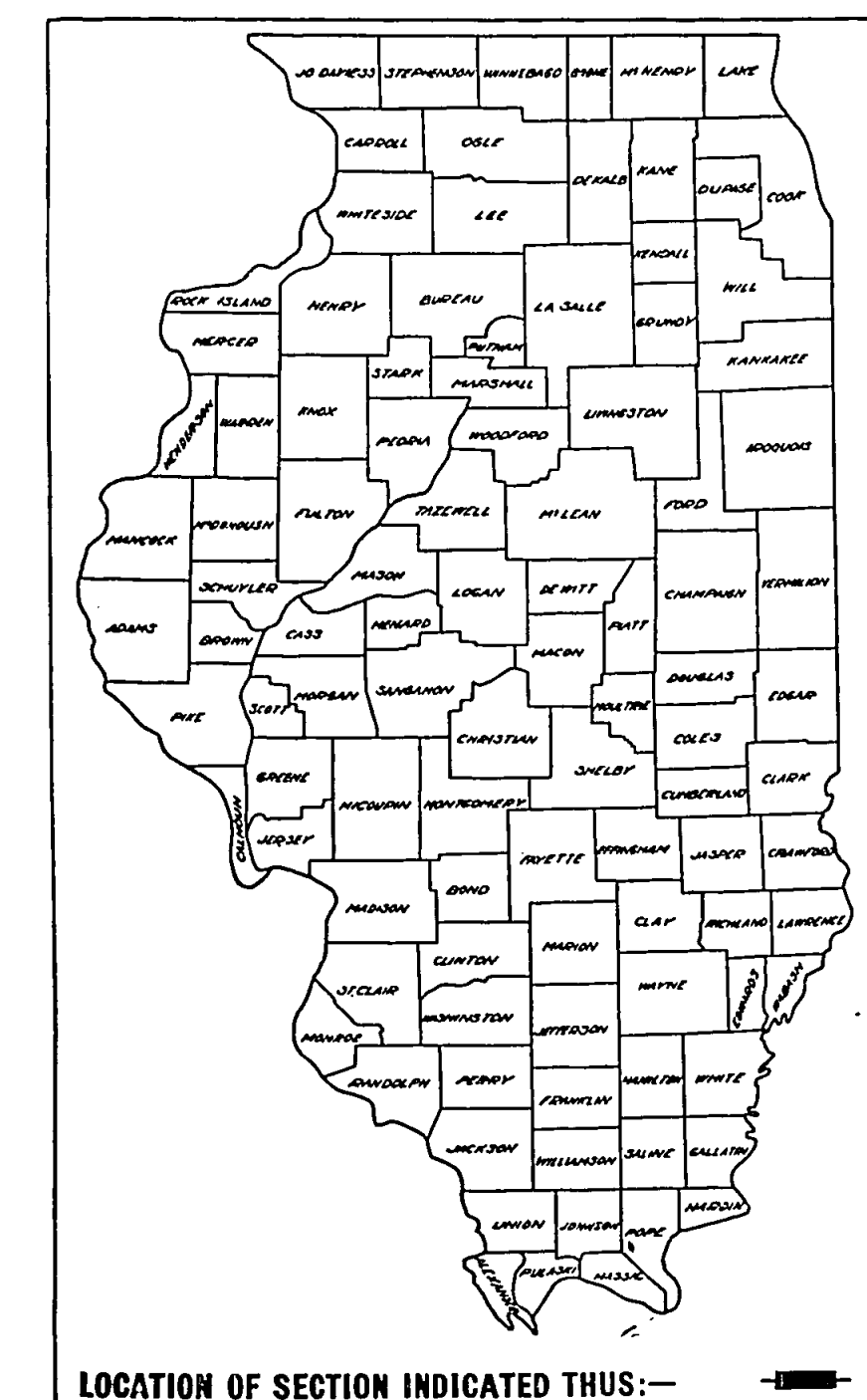


**STATE OF ILLINOIS**  
**DEPARTMENT OF PUBLIC WORKS AND BUILDINGS**  
**DIVISION OF HIGHWAYS**  
**PLANS FOR PROPOSED**  
**STATE BOND ISSUE HIGHWAY**

SCALES { PLAN 1 INCH 100 FT.  
 PROFILE, HOR. 1 INCH 100 FT.  
 PROFILE, VERT. 1 INCH 10 FT.  
 CROSS-SECTIONS 1 INCH 5 FT.

S.B.I. ROUTE 145  
 SECTION 103-D  
 POPE COUNTY

BOND ISSUE	SEC.	COUNTY	TOTAL SHEETS	SHEET
145	103-D	POPE	9	1
FED. ROAD DIV. NO. 4 ILLINOIS PROJECT				



THE PROPOSED IMPROVEMENT INCLUDES THE CONSTRUCTION OF A NEW CONCRETE DECK FOR TWO (2) EXISTING STEEL BEAM BRIDGES  
 BRIDGE STA. 896+56  
 SPANS, 8 @ 20'-0", 2 @ 17'-6 1/2", 1 @ 11'-1 1/2"

BRIDGE STA. 812+15  
 SPANS, 5 @ 20'-0", 2 @ 17'-7 1/4"

STATE OF ILLINOIS  
 DEPARTMENT OF PUBLIC WORKS AND BUILDINGS  
 DIVISION OF HIGHWAYS

SUBMITTED: *August 11, 1959*  
 EXAMINED: *August 12, 1959*  
 PASSED: *August 12, 1959*  
 APPROVED: *August 12, 1959*  
 APPROVED: *August 13, 1959*

JOB No. 20060

POPE COUNTY SECTION 103-D S. B. I. ROUTE 145



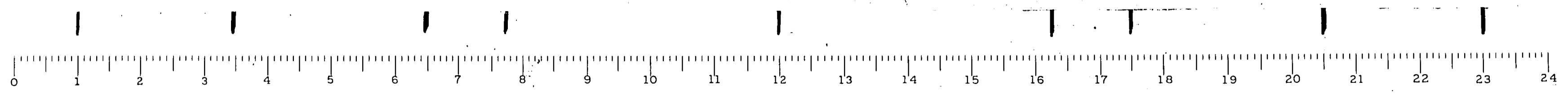
ROUTE NO.	SECTION	COUNTY	TOWNSHIP	SHEET
148	103-D	POPE	9	2
STA.	TO STA.		PROJECT	

GENERAL NOTES  
 CLASS X CONCRETE SHALL BE USED THROUGHOUT. THE CONCRETE FLOOR SLAB SHALL BE FURNISHED IN ACCORDANCE WITH ARTICLE 51.19 OF THE STANDARD SPECIFICATIONS.

- INDEX OF SHEETS
- 1 COVER SHEET.
  - 2 GENERAL NOTES; SUMMARY OF QUANTITIES; INDEX OF SHEETS.
  - 3-6 SPECIAL BRIDGE PLANS.
  - 7 STANDARDS 1686B; ELECTRICAL SERVICE INSTALLATION.
  - 8 STANDARDS 1971-2; 1972-1; 2111.
  - 9 TEMPORARY SIGNALS LAYOUT

CODE NO.	QUANTITY	UNIT	SUMMARY OF QUANTITIES
052003	207.8	CU. YD.	CLASS X CONCRETE
059001	3870	LS.	ATTACHMENT BARS
049022	1	EACH	REMOVAL OF TIMBER FLOORING STA 812+15
054022	9966	EACH	STUD SHEAR CONNECTORS
049023	1	EACH	REMOVAL OF TIMBER FLOORING STA 896+54

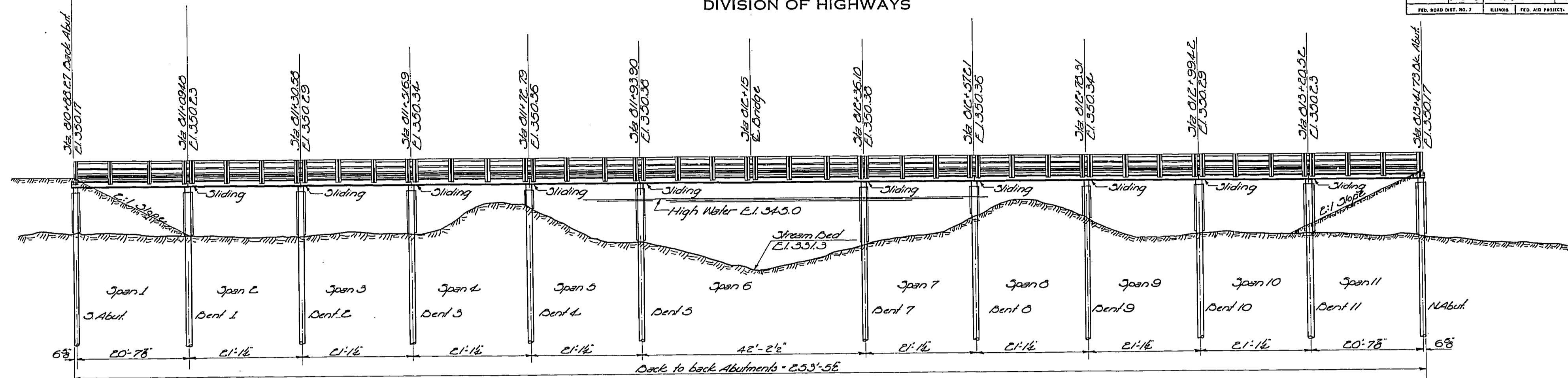
PREPARED BY *[Signature]*  
 DIST. DESIGN ENGINEER  
 EXAMINED BY *[Signature]*  
 DIST. CONST. ENGINEER  
 EXAMINED BY *[Signature]*  
 DIST. TRAFFIC ENGINEER  
 EXAMINED BY *[Signature]*  
 DIST. TRAFFIC ENGINEER  
 APPROVED *[Signature]*  
 DISTRICT ENGINEER



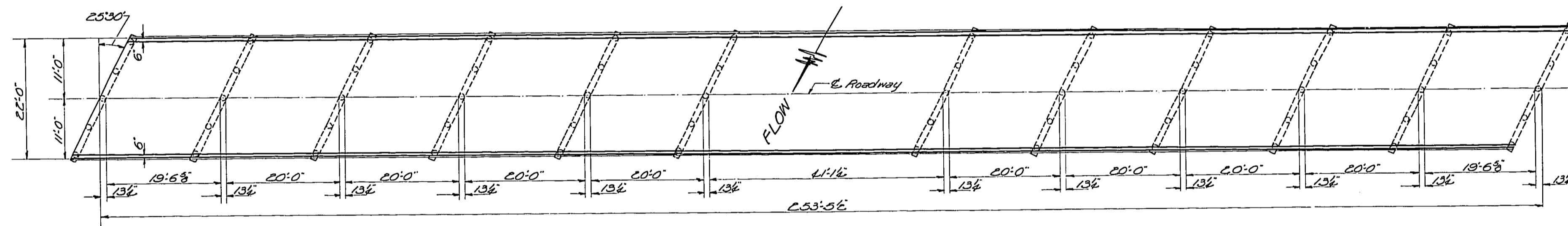
STATE OF ILLINOIS  
DEPARTMENT OF PUBLIC WORKS & BUILDINGS  
DIVISION OF HIGHWAYS

ROUTE NO.	SECTION	COUNTY	TOTAL SHEETS	SHEET NO.
	103-0	POPE	9	3
FED. ROAD DIST. NO. 7			ILLINOIS FED. AID PROJECT	

SHEET NO. 1  
2 SHEETS



GENERAL ELEVATION



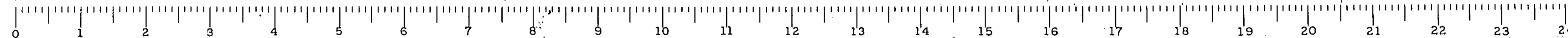
GENERAL PLAN

**GENERAL NOTES**  
Class X concrete shall be used throughout.  
The concrete floor slab shall be finished in accordance  
with Article 3119 of the Standard Specifications.

DESIGNED <i>D. Ashwell</i>	EXAMINED <i>April 30 1959</i>
CHECKED <i>C. J. Corlew</i>	PASSED <i>[Signature]</i>
DRAWN <i>W. L. Jacobs</i>	APPROVED <i>[Signature]</i>
CHECKED <i>C. J. Corlew</i>	

DESIGN STRESSES  
F<sub>c</sub> = 4,000 p.s.i. Slab  
F<sub>s</sub> = 20,000 p.s.i. Rein.  
F<sub>s</sub> = 18,000 p.s.i. Steel  
10-10  
Loading H15-312-44

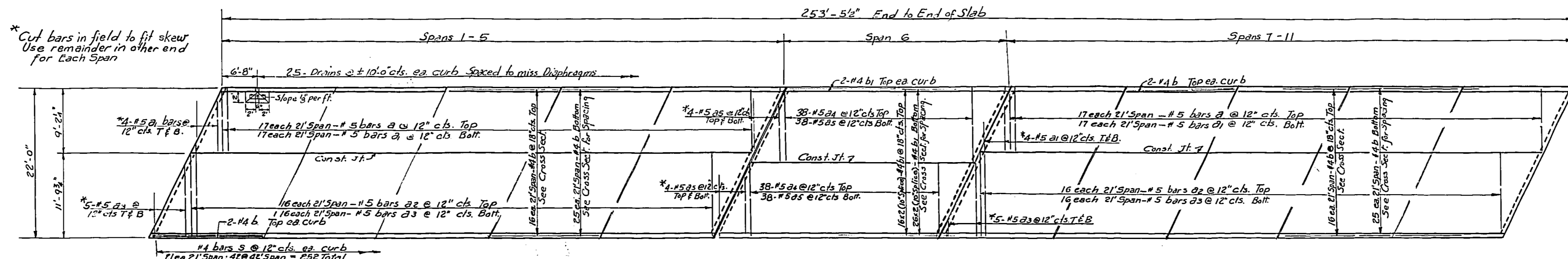
GENERAL PLAN & ELEVATION  
BAY CREEK  
S.D.I. Pt. 14.5 - Sec. 103-0  
POPE COUNTY  
STA. 812+15



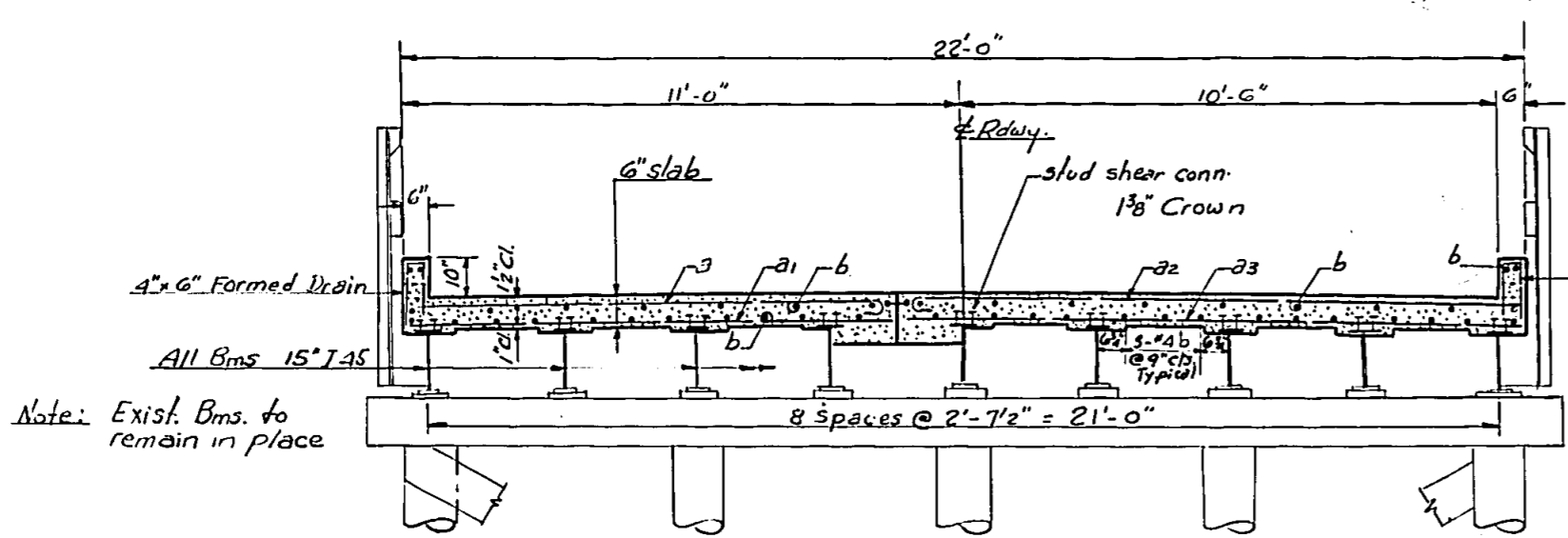
STATE OF ILLINOIS  
DEPARTMENT OF PUBLIC WORKS & BUILDINGS  
DIVISION OF HIGHWAYS

NOTE NO.	SECTION	COUNTY	TOTAL SHEETS	SHEET NO.
1	103-D	POPE	7	4
FED. ROAD DIST. NO. 1 ILLINOIS   FED. AID PROJECT				

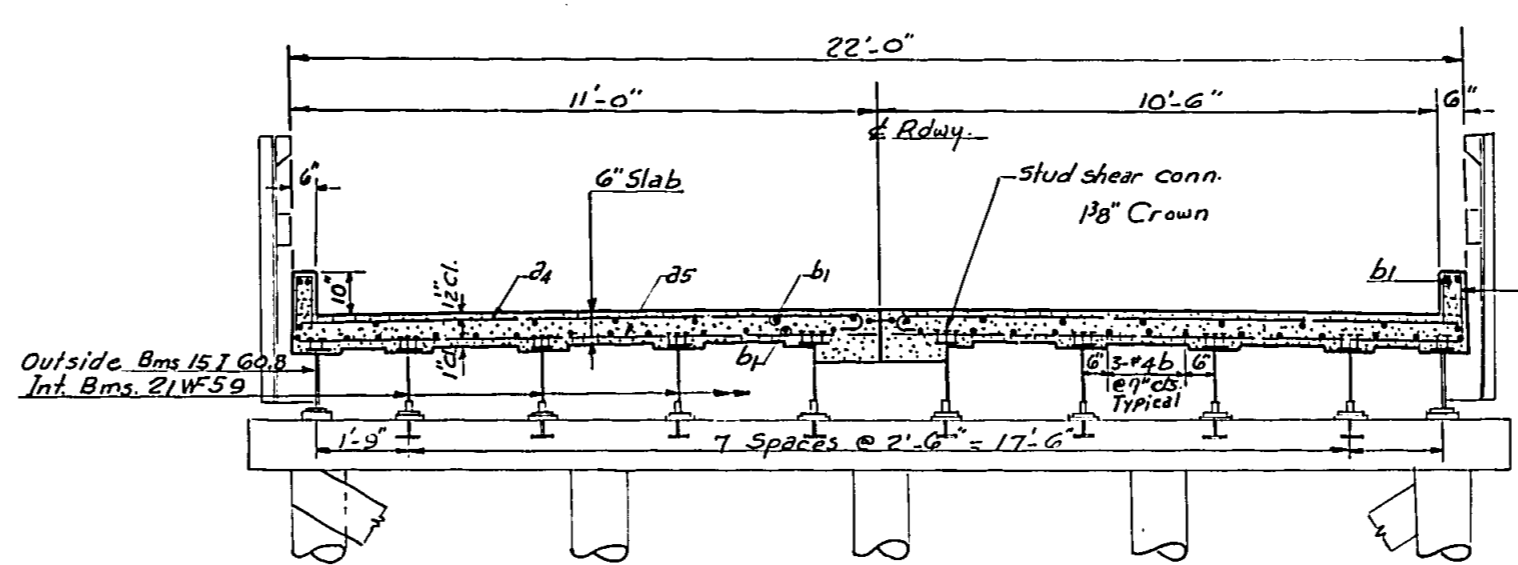
SHEET NO. 2  
2 SHEETS



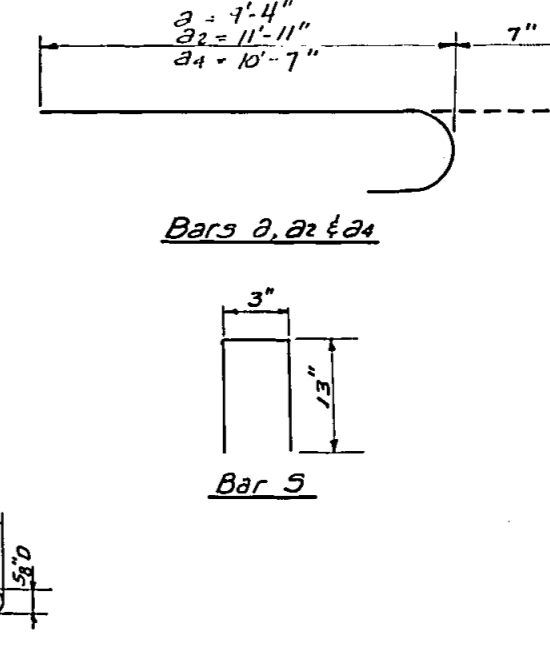
PLAN



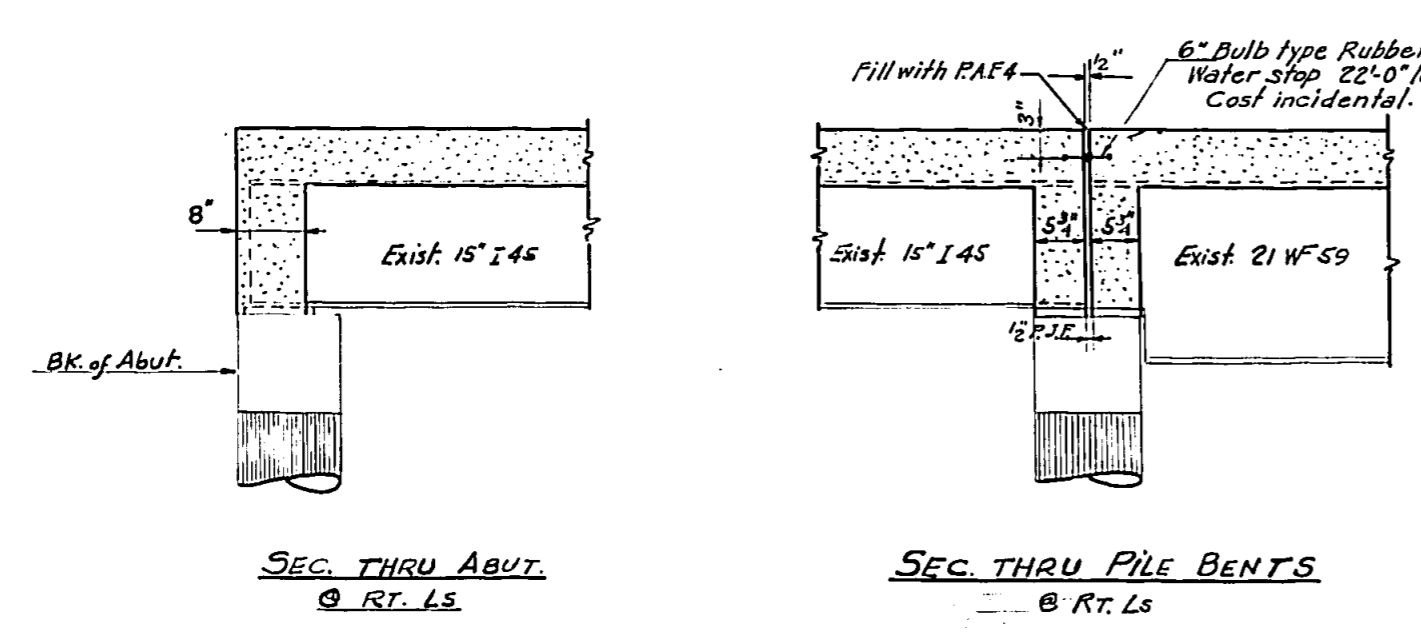
CROSS SECTION  
Spans 1-5 & 7-11



CROSS SECTION  
Span 6

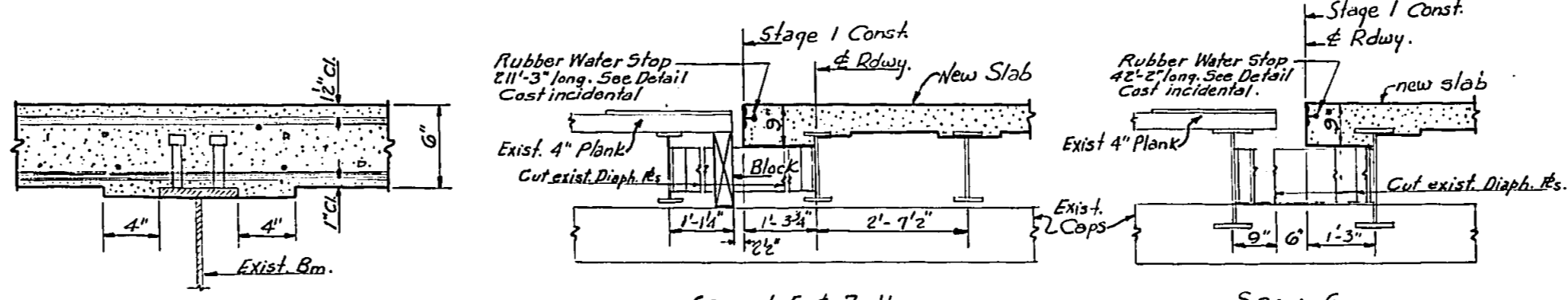


DETAIL OF RUBBER WATER STOP



SEC. THRU ABUT.  
@ RT. L.S.

SEC. THRU PILE BENTS  
@ RT. L.S.



FILLET DETAIL

STAGE I CONSTRUCTION

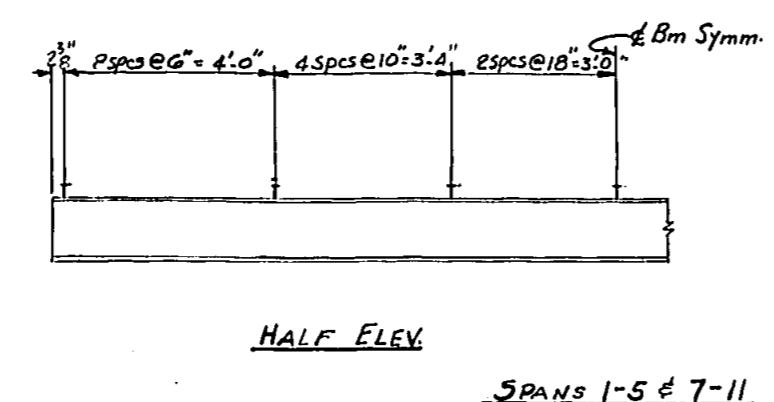
Stage I Const: Remove plank floor and block opposite side as shown. One-way traffic to be maintained. Replace plank with new slab as shown. After slab is cured re-route traffic over slab and finish slab construction. Furnishing & Placing of blocks incidental to Class X Concrete.

BILL OF MATERIALS

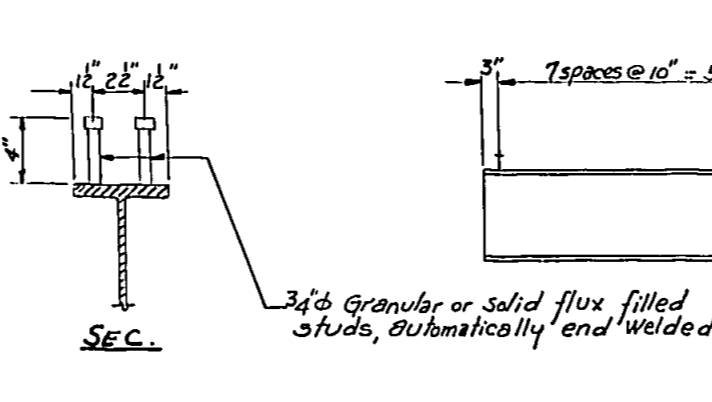
Bar	No.	Size	Length	Shape	
a	170	#5	9'-11"	→	
a1	290	#5	9'-6"	→	
a2	180	#5	12'-6"	→	
a3	260	#5	12'-0"	→	
a4	78	#5	11'-2"	→	
a5	72	#5	10'-9"	→	
b	450	#4	20'-9"	→	
b1	72	#4	21'-3"	→	
s	504	#4	2'-5"	↕	
Class X Concrete				Cu. Yds	130.2
Reinforcement Bars				Lbs	20250
Removal of Timber Flooring				Each	One
Stud Shear Connectors				Each	6312

DESIGNED: [Signature]  
CHECKED: [Signature]  
DRAWN: [Signature]  
CHECKED: [Signature]

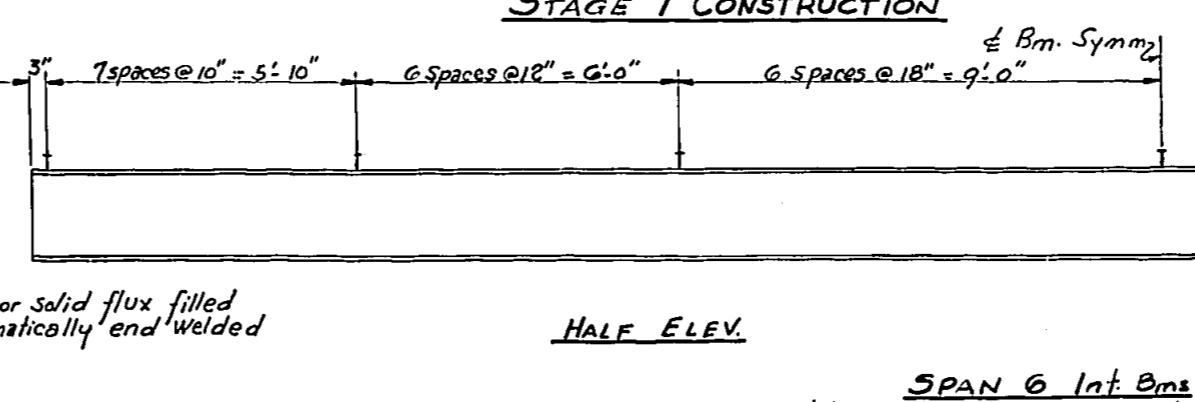
APRIL 30 1959  
EXAMINED: [Signature]  
PASSED: [Signature]  
APPROVED: [Signature]



HALF ELEV.  
SPANS 1-5 & 7-11

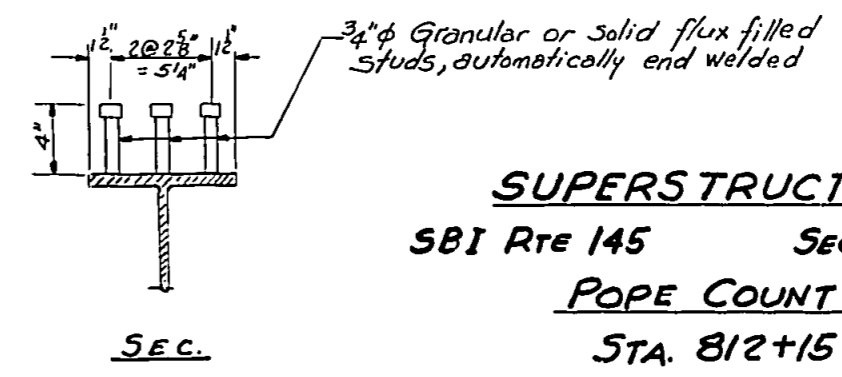


STUD SHEAR CONN. SPACING



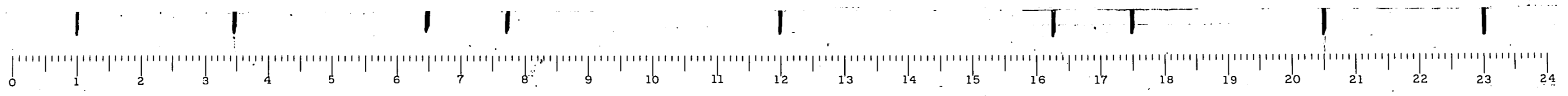
HALF ELEV.  
SPAN 6

SPAN 6 Int Bms  
Note: For Outside Bms use 2 studs per row same spacing.



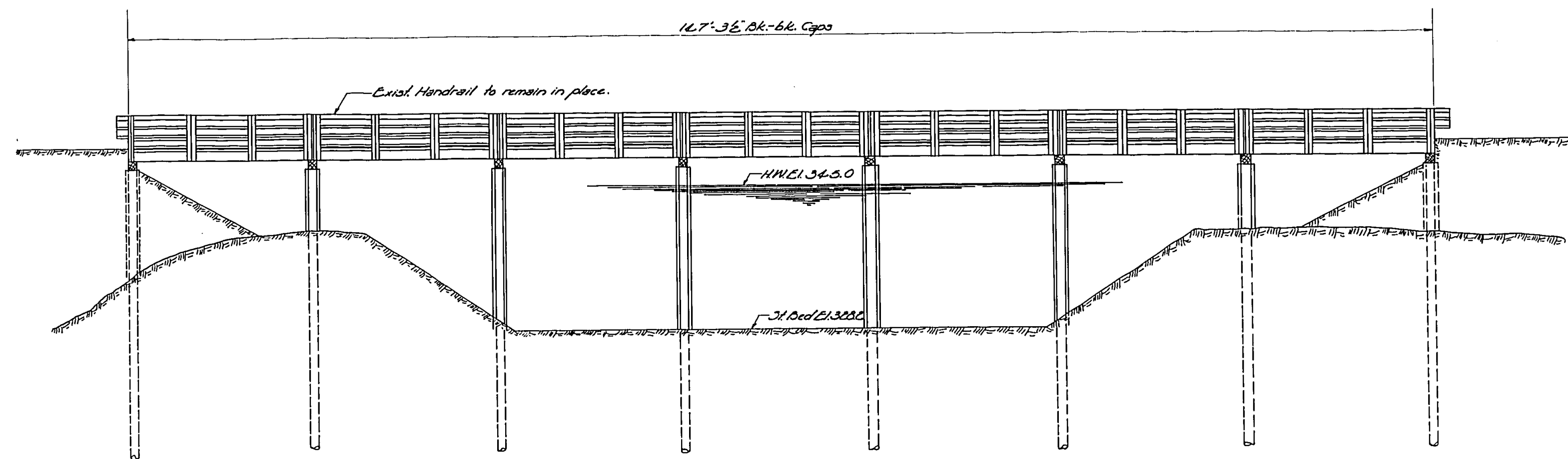
SEC.

**SUPERSTRUCTURE**  
SBI Rte 145 SECTION 103D  
POPE COUNTY  
STA. 812+15

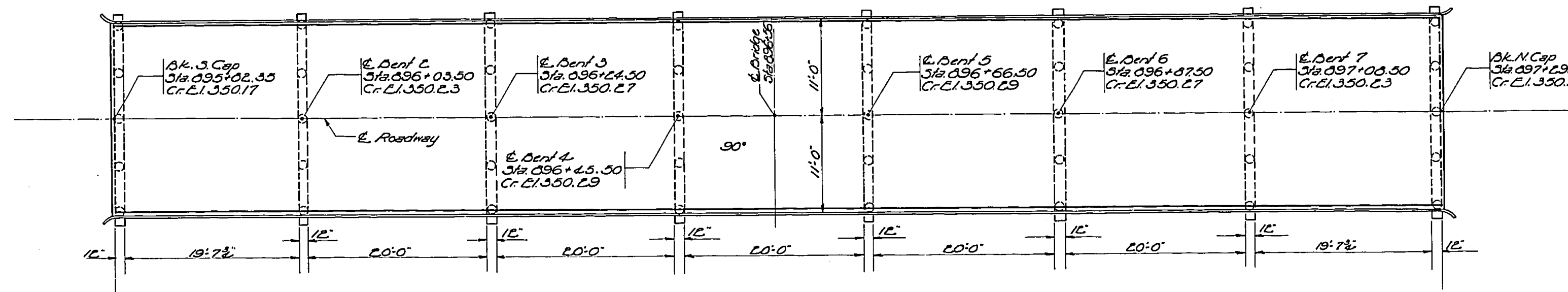
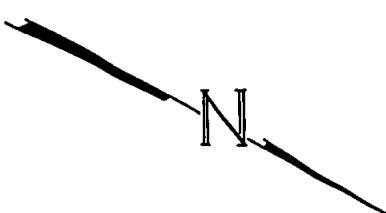


STATE OF ILLINOIS  
DEPARTMENT OF PUBLIC WORKS & BUILDINGS  
DIVISION OF HIGHWAYS

ROUTE NO.	SECTION	COUNTY	SHEET NO.	SHEET NO. /
	103-D	POPE	9	5
FED. ROAD DIST. NO. 7		ILLINOIS	FED. AID PROJECT	



ELEVATION



PLAN

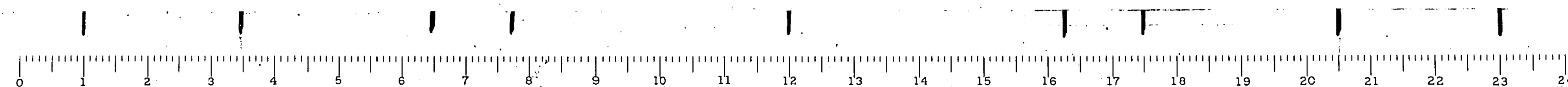
DESIGNED	<i>C. Cabnell</i>
CHECKED	<i>C. F. Corlew</i>
DRAWN	<i>M. L. Jacobs</i>
CHECKED	<i>C. F. C.</i>

APRIL 30 19 59	EXAMINED	<i>M. K. ...</i>
	PASSED	<i>E. ...</i>
	APPROVED	<i>R. L. ...</i>

**GENERAL NOTES**  
Class X concrete shall be used throughout.  
The concrete floor slab shall be finished in accordance with Article 5119 of the Standard Specifications.

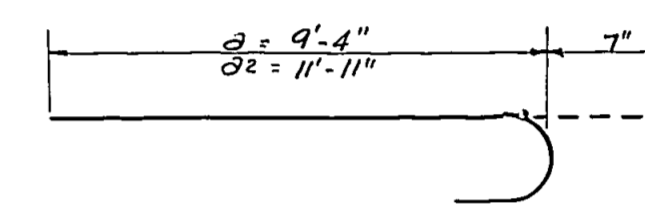
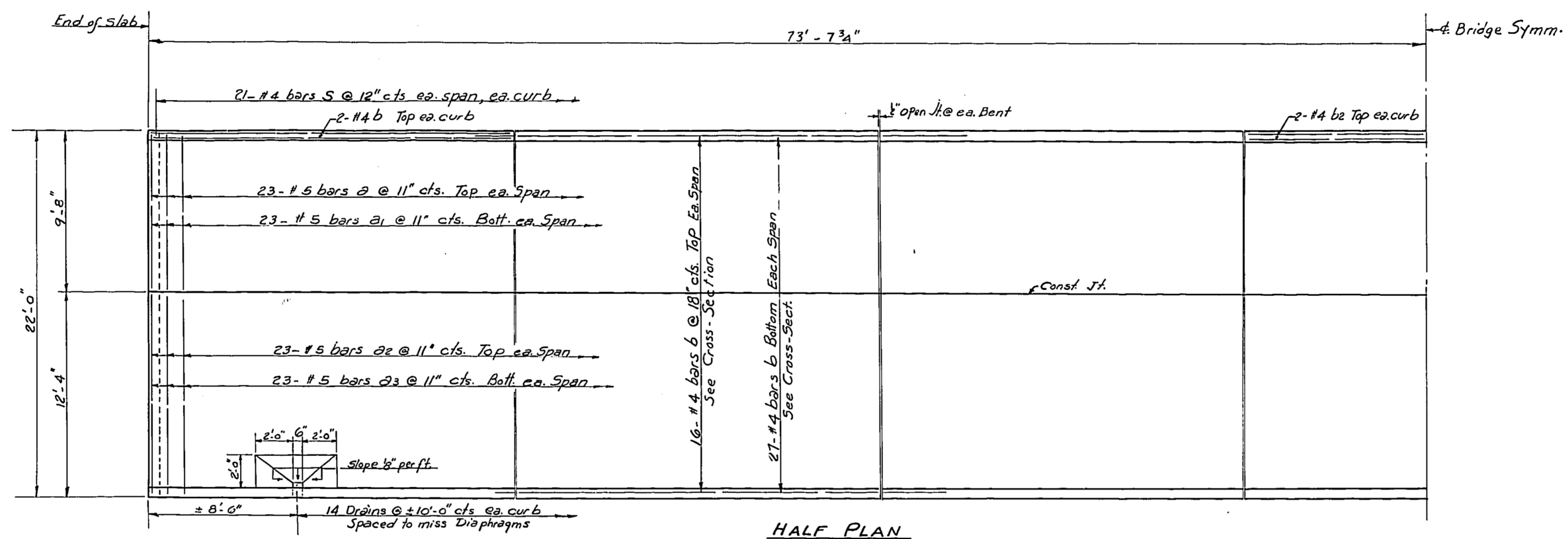
**DESIGN STRESSES**  
f<sub>c</sub> = 1,400 psi. Slab  
f<sub>s</sub> = 20,000 psi. Reinft  
f<sub>s</sub> = 10,000 psi. Strud  
n = 10

**GENERAL PLAN & ELEVATION**  
BAY CREEK  
S.D.P. Rt. 145 ~ Sec. 103-D  
POPE COUNTY  
374.696+56

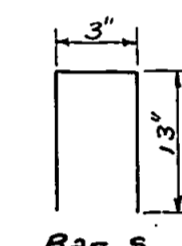


STATE OF ILLINOIS  
DEPARTMENT OF PUBLIC WORKS & BUILDINGS  
DIVISION OF HIGHWAYS

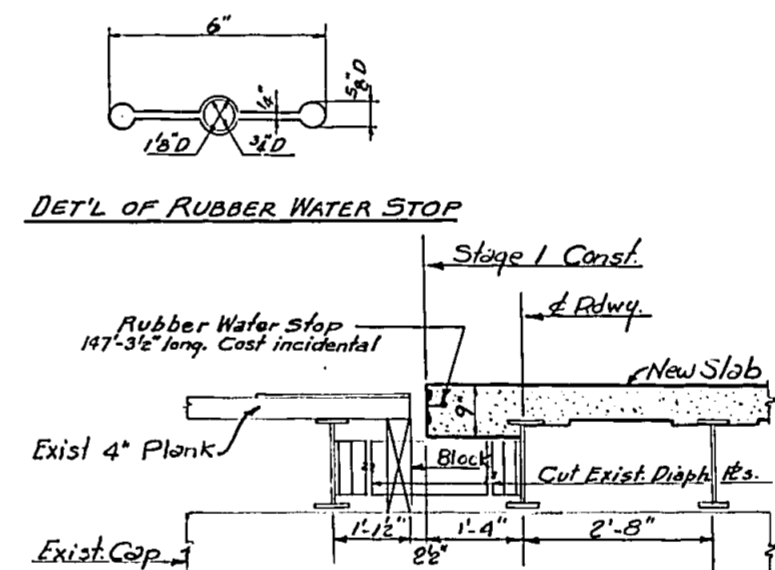
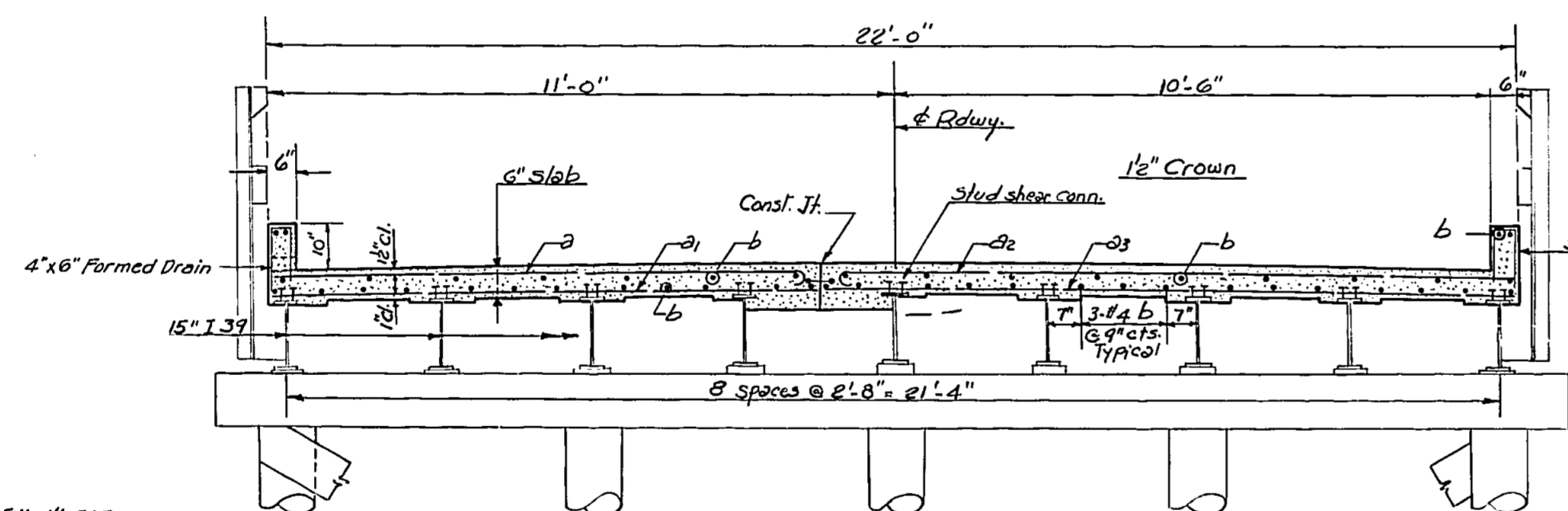
ROUTE NO.	SECTION	COUNTY	TOTAL SHEETS	SHEET NO.	SHEET NO. 2
103-D	POPE	POPE	7	6	2 SHEETS
FED. ROAD DIST. NO. 7	NUMBER	FED. AID PROJECT			



Bars - a & a2



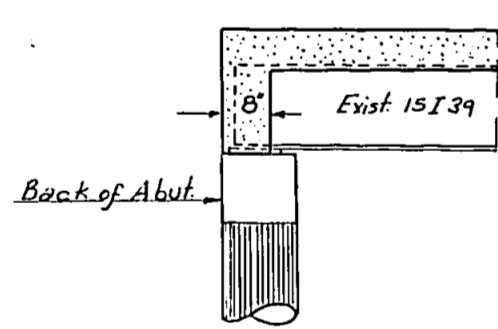
Bar - s



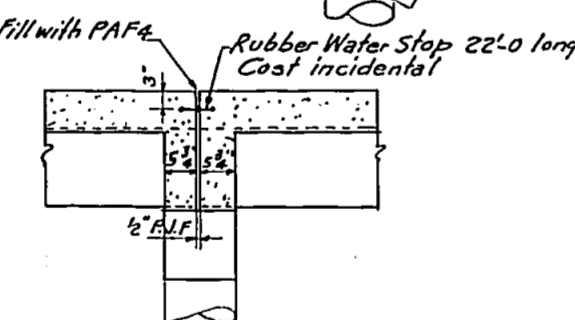
Stage I Const: Remove plank floor and block opposite side as shown. One-way traffic to be maintained. Replace plank with new slab as shown. After slab is cured re-route traffic over slab and finish slab construction. Furnishing & placing of blocks incidental to Class X Concrete.

STAGE I CONST.

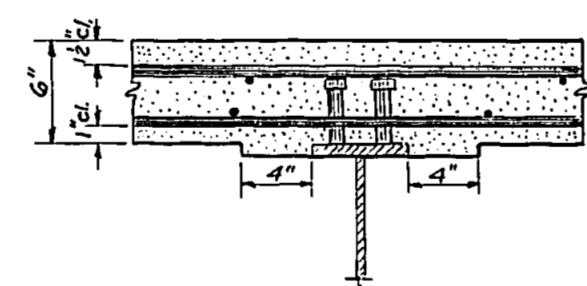
BILL OF MATERIALS				
Bar	No.	Size	Length	Shape
a	161	#5	9'-11"	—
a2	161	#5	9'-6"	—
a3	161	#5	12'-6"	—
a4	161	#5	12'-0"	—
b	329	#4	20'-9"	—
s	294	#4	2'-5"	□
Class X Concrete			Cu Yds.	77.6
Reinforcement Bars			Lbs	12420
Removal of Timber Flooring			Each	One
Stud Shear Connectors			Each	3654



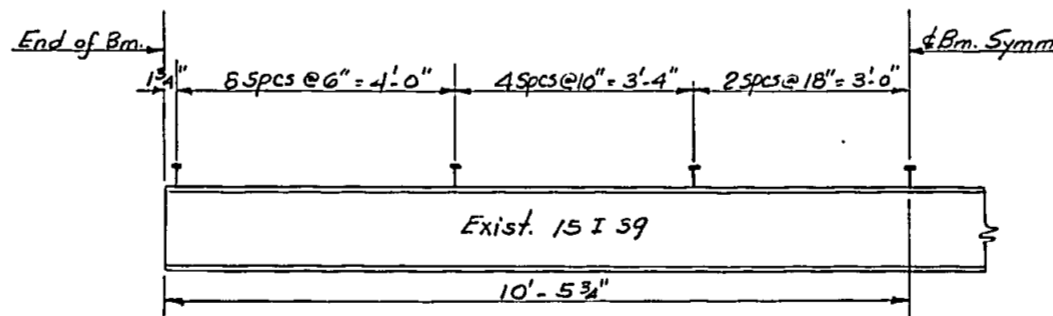
SEC. THRU ABUT.



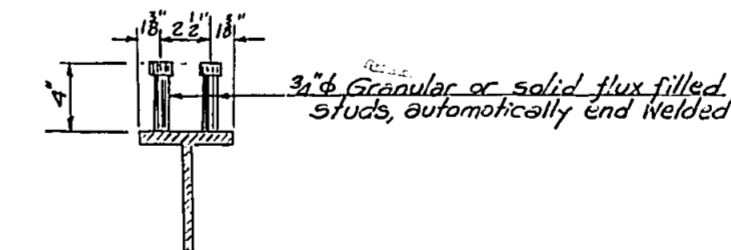
SEC. AT INT. BENTS



FILLET DETAIL



HALF ELEV.



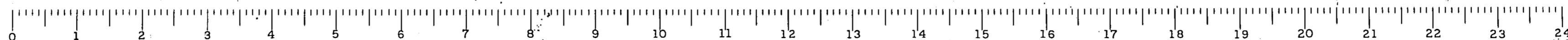
SEC.

TYPICAL STUD SHEAR CONN. SPACING

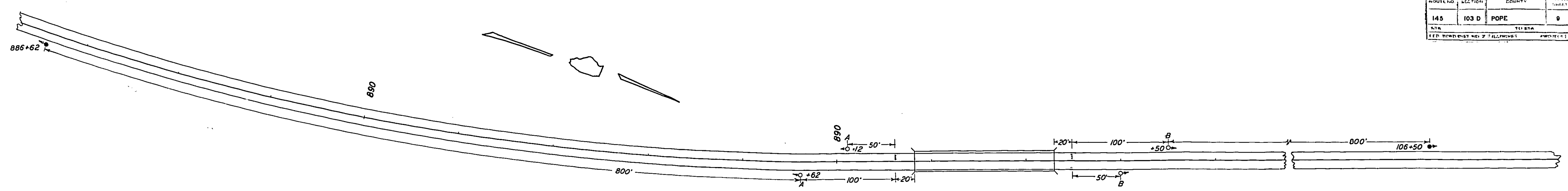
DESIGNED	<i>W. Atwell</i>
CHECKED	<i>C. L. Colver</i>
DRAWN	<i>A. K. B. Beck</i>
CHECKED	<i>C. L. C.</i>

APRIL 20 19 59	
EXAMINED	<i>M. Romine</i>
PASSED	<i>E. H. H. H.</i>
APPROVED	<i>R. H. H. H.</i>

SUPERSTRUCTURE  
SBI. RTE 145 SEC. 103-D  
POPE COUNTY  
Sta. 896+56



NO. 145	SECTION 103 D	COUNTY POPE	TOTAL LENGTH 0	SHEET 9
DATE				
BY				
FOR ROADWAY NO. 2 TELEPHONE				



SEQUENCE OF OPERATION

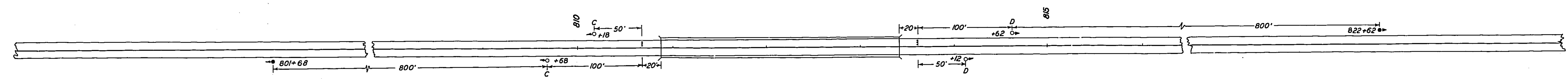
PHASE	I	II
INTERVAL	1 2 3 4 5 6 7 8	
SIGNALS A	G GY R R R R R R R	
SIGNALS B	R R R R R G GY R R	
% OF 70 SECOND CYCLE	25 4 19 2 25 4 19 2	

SEQUENCE OF OPERATION

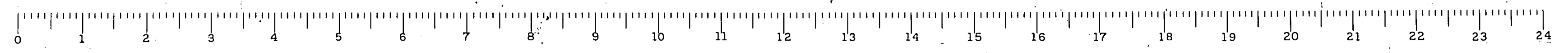
PHASE	I	II
INTERVAL	1 2 3 4 5 6 7 8	
SIGNALS C	G GY R R R R R R R	
SIGNALS D	R R R R R G GY R R	
% OF 70 SECOND CYCLE	25 4 19 2 25 4 19 2	

GENERAL NOTES  
 SIGNALS TO BE INSTALLED 6 FEET FROM EDGE OF PAVEMENT  
 SIGNALS A TO BE WIRED IN PARALLEL  
 SIGNALS B TO BE WIRED IN PARALLEL  
 SIGNALS C TO BE WIRED IN PARALLEL  
 SIGNALS D TO BE WIRED IN PARALLEL  
 ALL MATERIALS TO CONFORM TO THE STANDARD SPECIFICATIONS FOR TRAFFIC SIGNALS  
 TIMING TO BE DETERMINED BY DISTRICT TRAFFIC ENGINEER

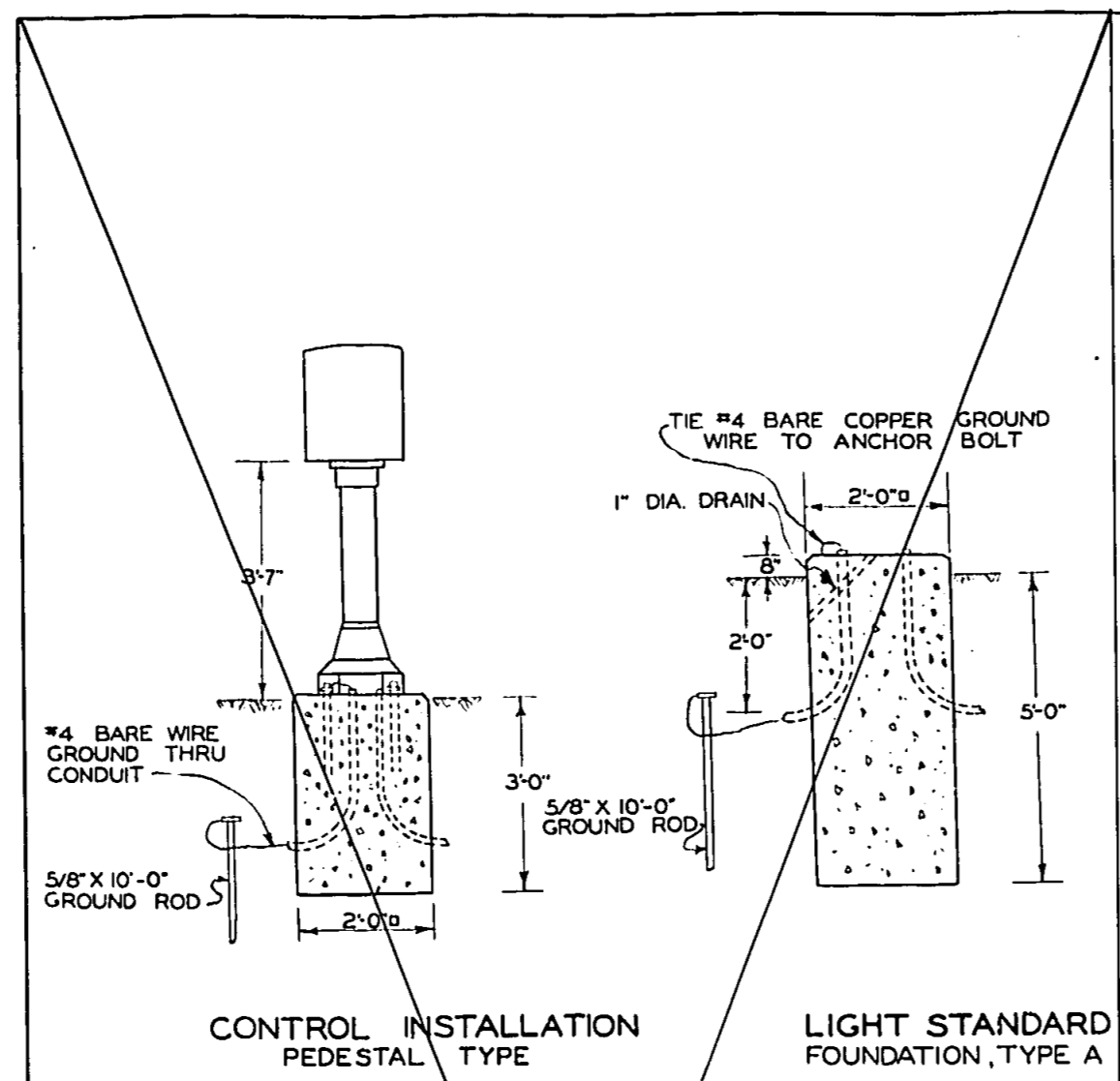
LEGEND  
 ○- TRAFFIC SIGNAL HEAD 1 FACE - 3 SECTION  
 ●- FLASHING CAUTION SIGNAL LIGHT  
 --- BARRICADE STD. 1972 P  
 □- TEMPORARY CONTROLLER



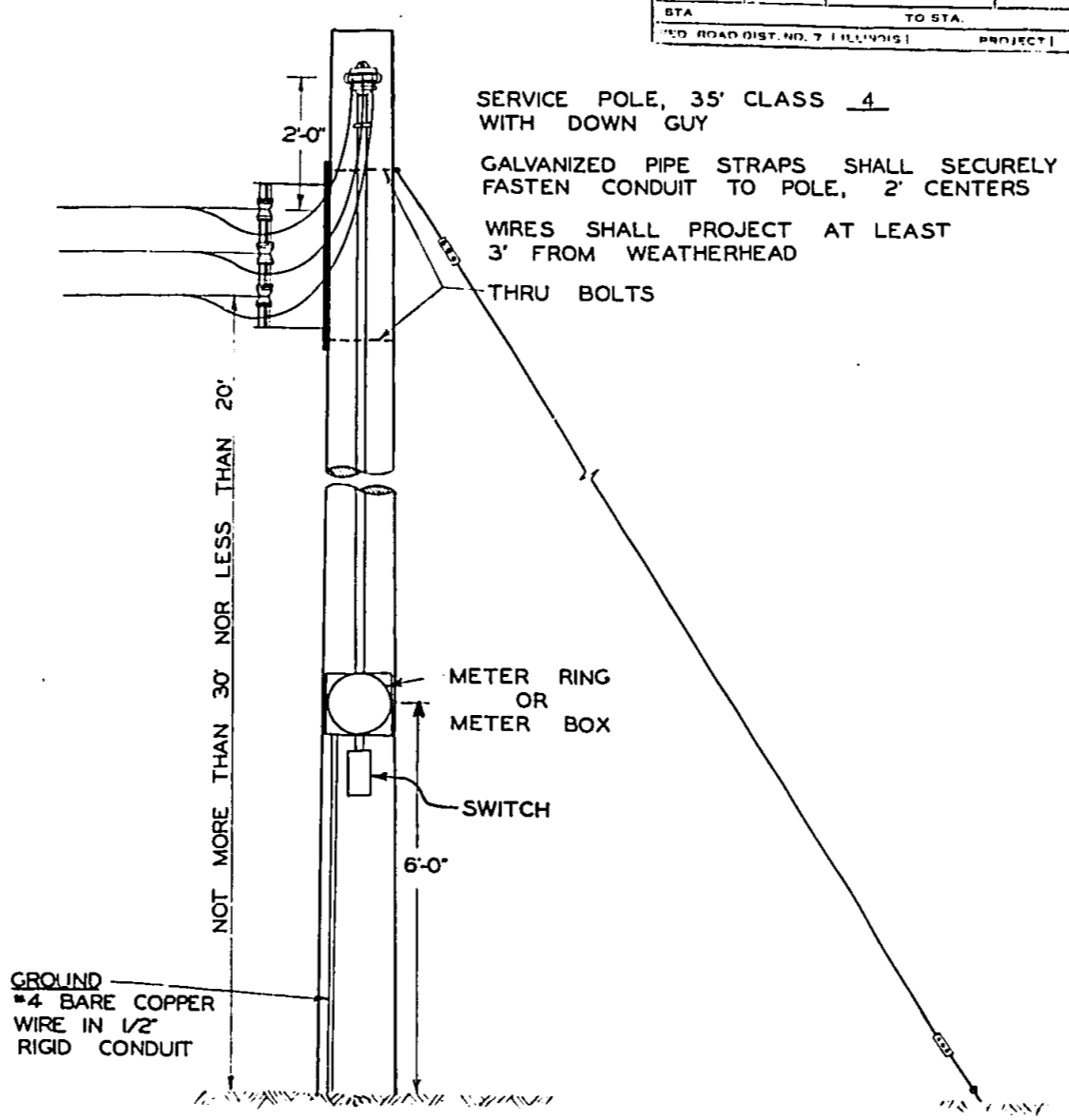
TEMPORARY SIGNALIZATION LAYOUT



ROUTE NO.	SECTION	COUNTY	TOTAL SHEETS	SHEET NO.
145	103-D	POPE	9	7
STA.	TO STA.	PROJECT		
200 ROAD DIST. W. 7 TULLOHS				

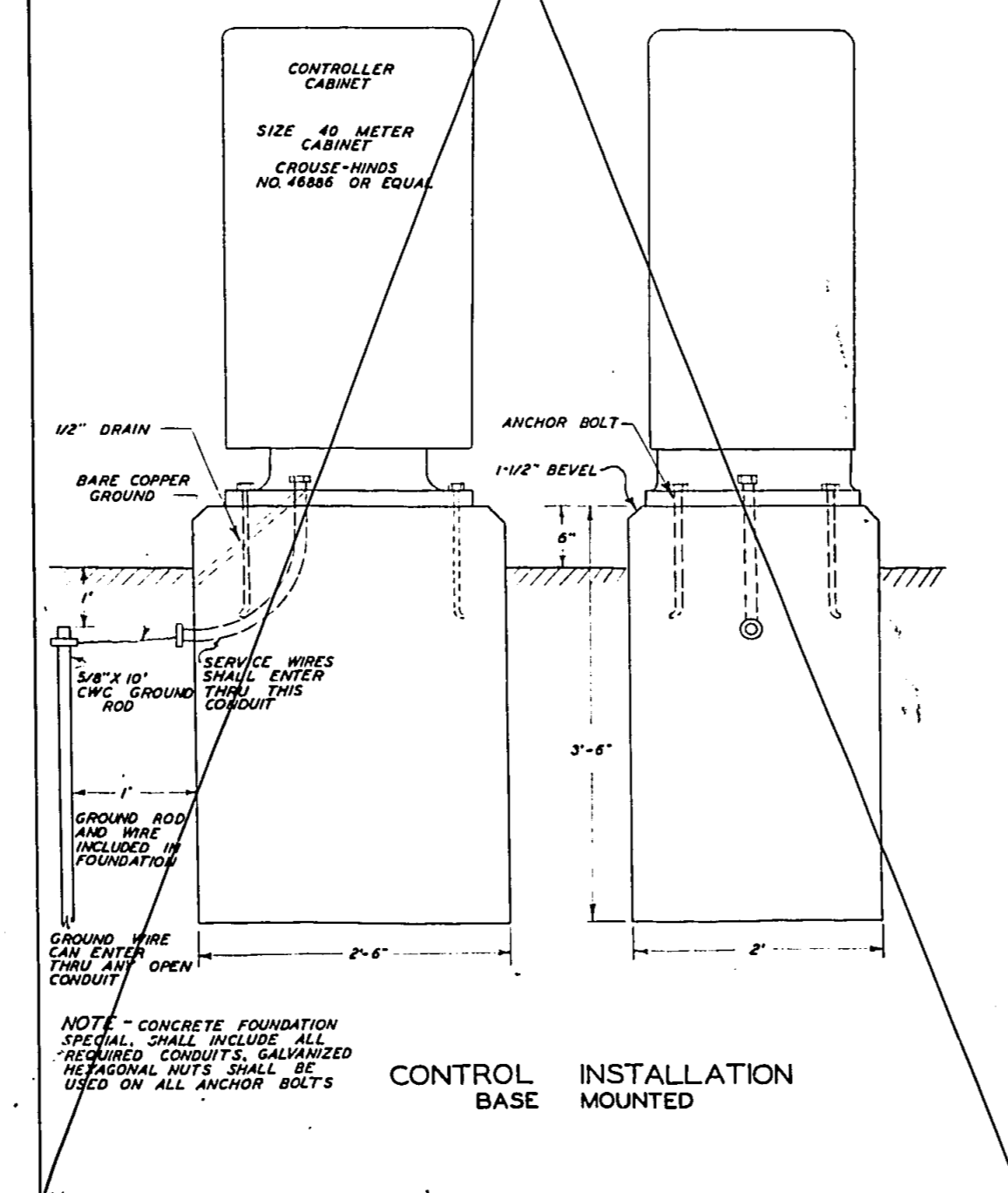


CONTROL INSTALLATION PEDESTAL TYPE  
LIGHT STANDARD FOUNDATION, TYPE A



SERVICE POLE INSTALLATION, SPECIAL  
ONE LOCATION - 2 REQUIRED

BILL OF MATERIALS		
NO.	UNITS	ITEM
1	EA.	ANCHOR, PATENTED
1	EA.	BOLTS, HUBEYE, ANGLE
1	EA.	BOLTS, THRU
38	LIN. FT.	CABLE, STEEL, GUY
2	EA.	CLAMPS, GUY, 3 BOLT
6	LIN. FT.	CONDUIT, RIGID - 1/2"
32	LIN. FT.	CONDUIT, RIGID - 1/4"
-	LIN. FT.	CONDUIT, RIGID - 2"
1	EA.	GUARD, GUY
1	EA.	METER RING OR BOX (FURNISHED BY UTILITY)
2	EA.	PADLOCKS, CYLINDER WITH 2 KEYS
1	EA.	POLE, SERVICE, 35' CLASS 4
1	EA.	RACK, SECONDARY, 3 SPOOL, COMPLETE
1	EA.	RODS, ANCHOR
1	EA.	RODS, GROUND 5/8 X 10'
6	EA.	STRAPS, PIPE, GALVANIZED - SINGLE HOLE
1	EA.	SWITCH, DISCONNECT, TYPE 3, RAINTIGHT
1	EA.	WEATHERHEAD, GALVANIZED - 3 HOLE
8	LIN. FT.	WIRE, #4 BARE COPPER
85	LIN. FT.	WIRE, #1 COND. NO. 4 TYPE RR



CONTROL INSTALLATION BASE MOUNTED

